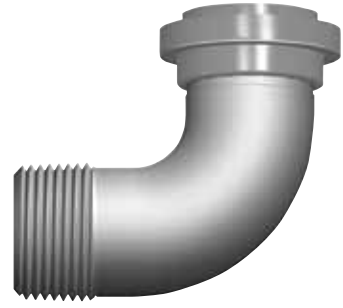


## Meter Swivels: Insulated Elbows

Complies with ASTM A197, ANSI B1.20.1 and ANSI B109.1

- Available in Black Malleable Iron (BMI)
- Available in Galvanized Malleable Iron (GMI)



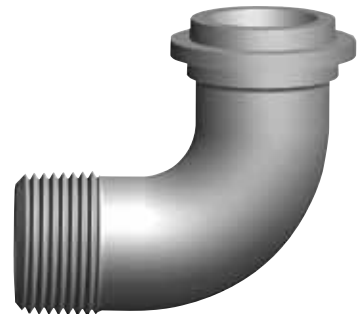
### INSULATED 90° ELBOWS

Size	MPT .	Length	BMI Part Number	Wt.	GMI Part Number	Wt.	Box Qty.
20LT	1"	2.22"	call	n/a	01020013100	.59	70

## Meter Swivels: Non-Insulated Elbows

Complies with ASTM A197, ANSI B1.20.1 and ANSI B109.1

- Available in Black Malleable Iron (BMI)
- Available in Galvanized Malleable Iron (GMI)



### NON-INSULATED 90° ELBOWS

Size	MPT Dia.	Length	BMI Part Number	Wt.	GMI Part Number	Wt.	Box Qty.
10LT	¾"	2.03"	0150076	.35	call	.37	100
20LT	1"	2.22"	0150112	.58	0150113	.60	50

For sizes not listed, call for availability.