



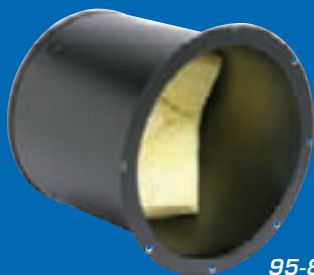
EZ95-8



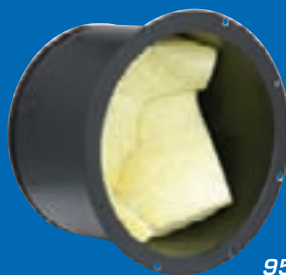
BMT95-8



BMT95-4-7



95-8-10



95-8-7



191-78-8



96-8



SM191-78-8



198-8-8

EZ Mount Enclosure System for Suspended Ceilings

Time and labor-saving enclosure system for 4" and 8" loudspeakers installs quickly and efficiently. Enclosures have premounted brackets and install easily with screws to support rails provided. No costly tile bridge is necessary. Welded CRS enclosures are undercoated and finished in textured black epoxy. Support rails are CRS and finished in a galvanized coating.

Enclosure System for Difficult Access Ceilings

Blind-Mount Enclosures for 4" & 8" Loudspeakers

BMT Series Unique enclosure system provides easy and cost-effective loudspeaker installation in hard-to-access ceilings, including drywall. Models are equipped with unique mounting ears that telescope out from the enclosure interior and adjust vertically to accommodate ceilings with a thickness of ½" (13mm) to 1⅝" (35mm). Construction is CRS with torsion spring receptacles and three ½" (13mm) conduit knockouts in the enclosure top. J-Nuts are included on the return of the enclosure to accommodate surface-mounting grilles. Standard depth Models BMT95-8 and BMT95-4 include sound dampening material to minimize metallic resonance. Extra depth Models BMT95-8-7 and BMT95-4-7 feature high-density, acoustic batting.

Enclosure for Extended Loudspeaker Performance

Extra-Depth Backboxes for 8" Loudspeakers

Achieve improved low-frequency performance of 8" commercial and professional loudspeakers with Atlas Sound extra-depth enclosures. Increased volume extends bass response by allowing additional acoustic loading for cost-effective application wherever enhanced audio quality is desired. Enclosures are undercoated and lined with 1½" (38mm) thick high density fiberglass (1½ lbs per ft³) to prevent metallic resonance in the high end of the frequency spectrum. Models include industry-standard 95 Series in screw-mount and torsion spring (T) versions, popular 96 Series with internal mounting holes on the flange for installation convenience in acoustic tile ceilings and Model 191-78-8 with adjustable mounting bracket for installation flexibility in a variety of ceiling types and depths. All enclosures are heavy-gauge CRS furnished with combination conduit knockouts. Recessed models are finished in textured black epoxy. Surface model is finished in textured white epoxy.