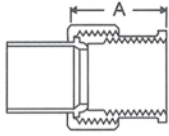
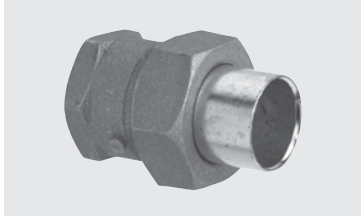


**UNION**

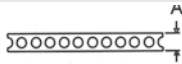
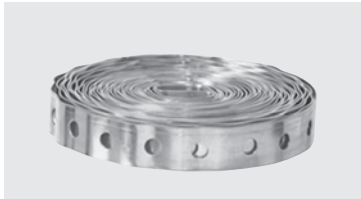
**COPPER PRESSURE**



WROT N/A	WROT ELKHART		CONNECTION C x F			CAST C-109*			
	2	3	CAST 4733-3	WROT N/A	NIBCO	CAST 733-3	Dimensions		
I	2	3	Part Number	Box Qty.	Master Qty.	Approx. Net.Wt.	A	B	C
	3/8"		A 11421*	10	200	.19	1-3/32		
	1/2"		A 11422*	25	125	.26	1-1/8		
	3/4"		A 11423*	25	150	.37	1-5/16		
	1"		A 11424*	10	100	.61	1-7/16		
	1-1/4"		A 11425*	5	50	.98	1-19/32		
	1-1/2"		A 11426*	-	50	1.21	1-13/16		
	2"		A 11427*	-	25	1.9	2-5/32		

**COPPER TUBE STRAP • PERFORATED**

**COPPER PRESSURE**



WROT 125	WROT WS-1101		CONNECTION			CAST			
	2	3	CAST N/A	WROT 623	NIBCO	CAST N/A	Dimensions		
I	2	3	Part Number	Box Qty.	Master Qty.	Approx. Net.Wt.	A	B	C
	25 Ft. Roll		A 01211*	1	10	1.63	.75		

**COPPER TUBE STRAP • TWO-HOLE**

**COPPER PRESSURE**



WROT 120	WROT WS-1100		CONNECTION C			CAST			
	2	3	CAST N/A	WROT 624	NIBCO	CAST N/A	Dimensions		
I	2	3	Part Number	Box Qty.	Master Qty.	Approx. Net.Wt.	A	B	C
	1/8"		A 01203	100	4,000	.01			
	1/4"		A 01278	100	5,600	.01			
	3/8"		A 01366	100	3,400	.01			
	1/2"		A 02529	100	1,500	.01			
	5/8"		A 01467	100	2,000	.01			
	3/4"		A 02574	50	750	.01			
	1"		A 02614	50	750	.02			
	1-1/4"		A 02650	50	500	.04			
	1-1/2"		A 02675	50	500	.05			
	2"		A 02708	50	500	.06			

**HANGER • HI EAR**

**COPPER PRESSURE**



WROT	WROT W-125		CONNECTION C			CAST			
	2	3	CAST	WROT	NIBCO N/A	CAST	Dimensions		
I	2	3	Part Number	Box Qty.	Master Qty.	Approx. Net.Wt.	A	B	C
	1/2"		A 03167*	100	1,000	.03	1-5/8	47/64	
	3/4"		A 03168*	50	500	.04	1-5/8	7/8	
	1"		A 03171*	25	250	.04	1-1/8	1	

TUBE & PIPE

METAL FITTINGS & NIPPLES

PLASTIC FITTINGS & NIPPLES

VALVES

FAUCETS & BATH ACCESSORIES

SPECIALTIES

