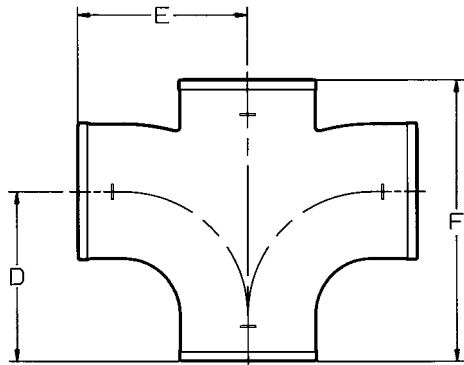


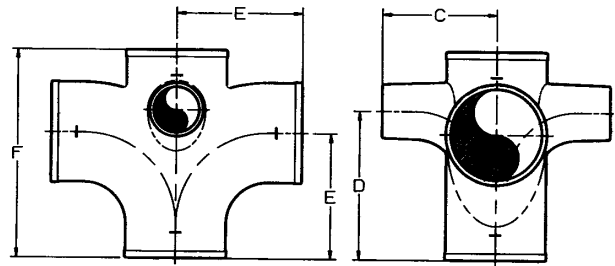


# NO-HUB ASA Group 022 CROSSES



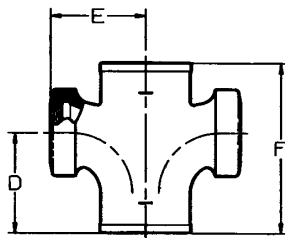
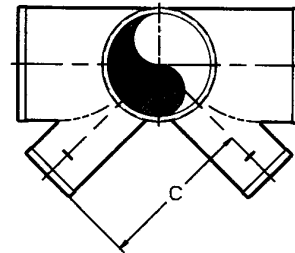
**SAN CROSS**

Ship Code	UPCode 670610	Size	D	E	F	Wt.
S	009061	1½	4¼	4¼	6½	3.1
S	009078	2	4½	4½	6¾	4.0
S	009085	3x2	4½	5	6¾	6.1
S	009092	3	5	5	8	6.2
S	009108	4x2	4½	5½	6¾	6.2
S	009115	4x3	5	5½	8	9.7
S	009122	4	5½	5½	9⅞	8.9
S	009139	5x4	6	6	10⅞	13.3
S	009146	6x4	6	6½	10⅞	12.0
S	009153	6	7	7	12½	20.3
S	009160	8x4	6½	7½	11½	25.0
S	389866	8	8½	8½	15½	38.8



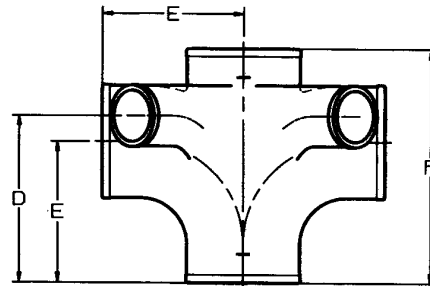
**SAN CROSS**  
(w/2" 90° Opening Above Center)  
New Orleans Code  
(No Baffle)

Ship Code	UPCode 670610	Size (Inlets)	C	D	E	F	Wt.
S	009221	3 (2)	4½	6	5	8¾	9.3
S	009238	4 (1)	5	6½	5½	9⅞	11.0
S	009245	4 (2)	5	6½	5½	9⅞	12.0



**SAN TAP CROSS**  
(No Baffle)

Ship Code	UPCode 670610	Size	D	E	F	Wt.
S	009283	1½x1½	¾	2⅞	5⅞	3.4
S	009290	2x1¼	¾	2⅞	5⅞	3.7
S	009306	2x1½	¾	2⅞	5⅞	3.5
S	009313	2x2	¾	3⅞	6⅞	4.0
S	009337	3x1½	¾	3⅞	5⅞	4.6
S	009344	3x2	¾	3⅞	6⅞	5.0
S	009368	4x1½	¾	3⅞	5⅞	5.5
S	009375	4x2	¾	4⅞	6⅞	6.7
S	009405	5x1½	¾	4⅞	6⅞	8.4
N	009382	6x1½	¾	4⅞	6⅞	10.5



**SAN CROSS**  
(with two 2" 45° San Openings—Same Side)  
New Orleans Code  
(No Baffle)

Ship Code	UPCode 670610	Size	C	D	E	F	Wt.
S	009252	3	5⅞	6	5	8	7.6
S	009269	4	6⅞	6½	5½	9⅞	11.0

**SHIPPING CODE**

**S** = From Stock

**N** = Non-Stock; Check in advance for availability.