

Fig. 1 - Standard Clevis Hanger

Size Range — Size 1/2" thru 36" pipe.

Material — Carbon Steel

Function — Recommended for the suspension of non-insulated pipe or insulated pipe with Fig. 220 shield.

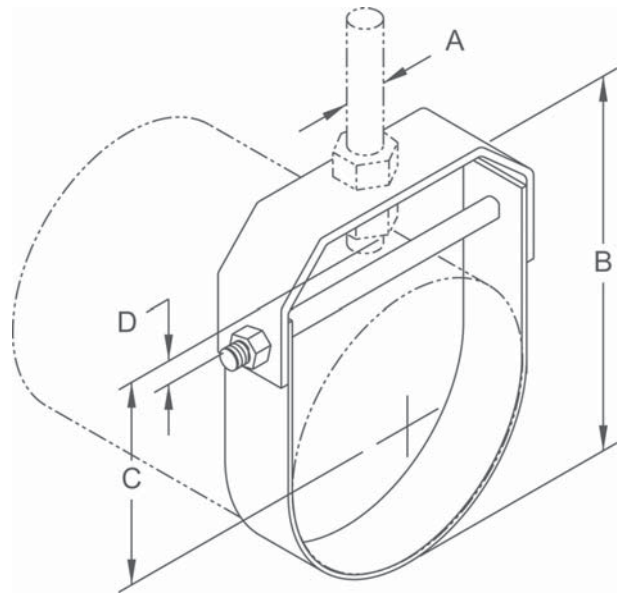
Note — When an oversized clevis is used, a pipe spacer should be placed over the cross bolt to assure that the lower U-strap will not move in on the bolt. When attaching seismic bracing to clevis hangers, a Fig. 1 CBS (cross bolt spacer) must be installed. See TOLCO® Seismic Restraint Approval Guidelines.

Approvals — Underwriters' Laboratories Listed in the USA (UL), Canada (cUL) 3/4" thru 8". Conforms to Federal Specification WW-H-171E, Type 1, and Manufacturers Standardization Society SP-69, Type 1. Also available to accommodate rod schedule per National Fire Protection Association (NFPA) Pamphlet 13. Included in our Seismic Restraints Catalog approved by the State of California Office of Statewide Health Planning and Development (OSHPD). For additional load, spacing and placement information relating to OSHPD projects, please refer to the TOLCO Seismic Restraint Systems Guidelines.

Maximum Temperature — 650°F

Finish — Plain

Note — Available in Electro-Galvanized and HDG finish or Stainless Steel.



Dimensions • Weights

Pipe Size	Rod Size A		B	C	D	Max. Rec. Load Lbs.	Approx. Wt./100
	STD	NFPA					
1/2	3/8	3/8	2 ¹ / ₁₆	1 ³ / ₁₆	1	610	36
3/4	3/8	3/8	2 ⁷ / ₈	1 ⁷ / ₈	1	610	38
1	3/8	3/8	3 ¹ / ₄	2 ¹ / ₁₆	1	610	42
1 ¹ / ₄	3/8	3/8	3 ⁹ / ₁₆	2 ¹ / ₄	1	610	46
1 ¹ / ₂	3/8	3/8	3 ⁷ / ₈	2 ³ / ₈	1	610	49
2	3/8	3/8	4 ⁷ / ₁₆	2 ³ / ₄	1	610	55
2 ¹ / ₂	1/2	3/8	5 ⁵ / ₁₆	3 ¹ / ₄	1	1130	124
3	1/2	3/8	5 ¹⁵ / ₁₆	3 ¹ / ₂	1 ¹ / ₄	1130	140
3 ¹ / ₂	1/2	3/8	6 ⁷ / ₁₆	3 ³ / ₄	1 ¹ / ₄	1130	152
4	5/8	3/8	7 ³ / ₈	4 ¹ / ₄	1 ¹ / ₂	1430	190
5	5/8	1/2	8 ¹⁵ / ₁₆	5 ¹ / ₄	1 ¹ / ₂	1430	235
6	3/4	1/2	9 ¹³ / ₁₆	5 ¹ / ₂	1 ¹ / ₂	1940	317
8	3/4	1/2	12 ⁹ / ₁₆	7 ¹ / ₈	2	2000	428
10	7/8	5/8	16 ¹ / ₄	9 ⁵ / ₈	3 ¹ / ₄	3600	918
12	7/8	5/8	18 ⁹ / ₁₆	10 ¹³ / ₁₆	3 ¹ / ₈	3800	1086
14	1	—	20 ³ / ₄	12 ³ / ₈	4	4200	1267
16	1	—	22 ⁷ / ₈	13 ³ / ₁₆	3 ³ / ₄	4600	1930
18	1	—	25 ³ / ₄	15 ⁹ / ₃₂	4 ⁷ / ₁₆	4800	2264
20	1 ¹ / ₄	—	28 ¹³ / ₁₆	17 ¹ / ₁₆	5 ³ / ₁₆	4800	3531
*24	1 ¹ / ₄	—	32 ¹ / ₈	18 ¹ / ₄	4 ⁷ / ₁₆	4800	4431
*30	1 ¹ / ₄	—	38 ⁷ / ₈	21 ⁷ / ₈	5	6000	6940
*36	1 ¹ / ₂	—	48	27 ³ / ₄	5 ³ / ₄	9500	18103

*Furnished with pipe spacer to support maximum load rating

Fig. 1CBS - Clevis Bolt Spacer

Size Range — Size 1" thru 20" clevis hanger

Material — Carbon Steel

Function — Used as a spacer at a seismic brace location to keep clevis hanger from collapsing during seismic event.

Approvals — Included in our Seismic Restraints Catalog approved by the State of California Office of Statewide Health Planning and Development (OSHDP). For additional load, spacing and placement information relating to OSHDP projects, please refer to the TOLCO Seismic Restraint Systems Guidelines.

Installation Note — Fig. 1CBS fits easily over the cross bolt and attaches by pinching tabs down.

Finish — Mil Galvanized

Note — Available in Stainless Steel material.

Component of State of
California OSHDP Approved
Seismic Restraints System

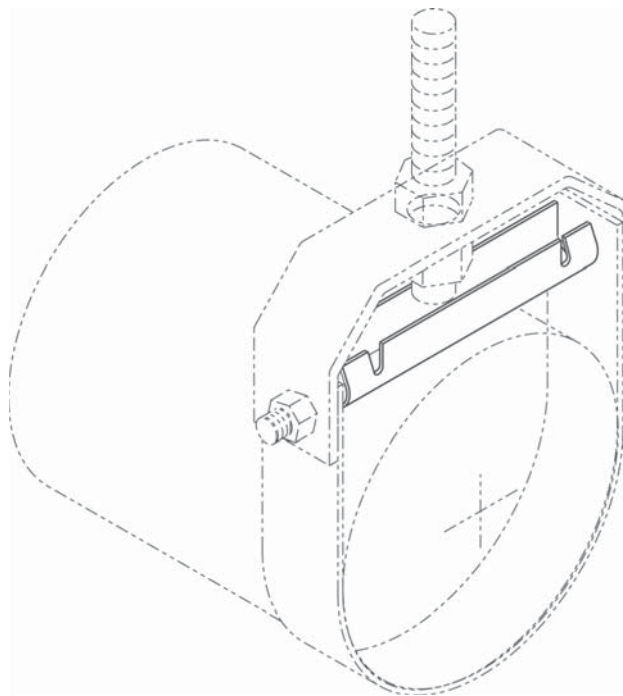
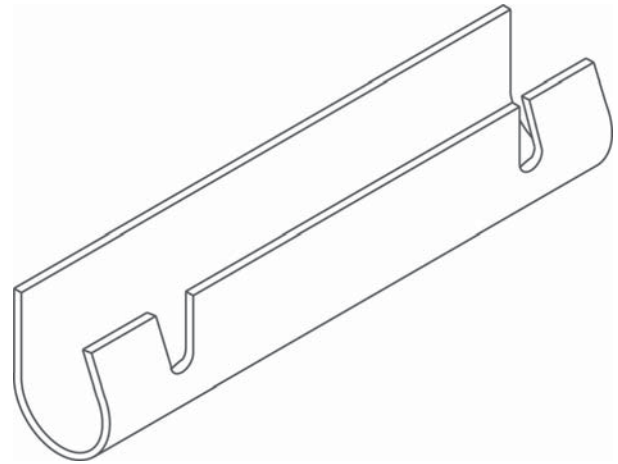


Fig. 1C.I. - A.W.W.A. Clevis Hanger

Size Range — Size 4" thru 24" pipe.

Material — Carbon Steel

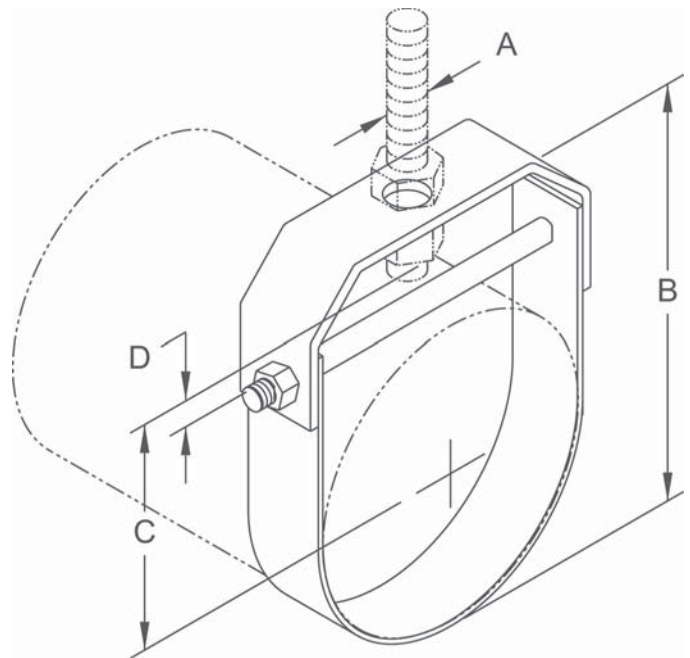
Function — For the suspension of flanged or bell and spigot A.W.W.A. cast iron or ductile iron pipe. The O.D. of the A.W.W.A. iron pipe is shown in the data table.

Approvals — Conforms to Federal Specification WW-H-171E, Type 1 and Manufacturers Standardization Society SP-69, Type 1.

Finish — Plain

Note — Available in Electro-Galvanized and HDG finish or Stainless Steel.

Order By — Figure number, pipe size and finish



Dimensions • Weights

Pipe Size	Rod Size A	Pipe O.D.	B	C	D	Max. Rec. Load Lbs.	Approx. Wt./100
4	5/8	4.80	8	4 ³ / ₄	1 ⁵ / ₈	1430	213
6	3/4	6.90	10 ³ / ₁₆	5 ³ / ₄	1 ³ / ₄	1940	430
8	3/4	9.05	12 ⁵ / ₈	7	1 ³ / ₄	2000	664
10	7/8	11.10	15 ⁷ / ₁₆	8 ⁵ / ₈	2 ¹ / ₄	3600	940
*12	7/8	13.20	16 ⁷ / ₈	9	2 ¹ / ₄	3800	1217
*14	1	15.30	20 ⁷ / ₈	11 ³ / ₄	2 ¹ / ₂	4200	1533
*16	1	17.40	23 ¹ / ₁₆	13 ¹ / ₂	3 ³ / ₈	4600	1925
*18	1	19.50	26 ¹ / ₁₆	14 ⁷ / ₈	3 ³ / ₈	4800	2223
*20	1 ¹ / ₄	21.60	29 ¹ / ₁₆	16 ³ / ₈	3 ³ / ₄	4800	4182
*24	1 ¹ / ₄	25.80	33 ³ / ₈	18 ⁵ / ₈	4	4800	5460

*Furnished with pipe spacer to support maximum load rating

Fig. 1A - Clevis Hanger for Insulated Lines

Size Range — Size 3/4" thru 12" pipe.

Material — Carbon Steel

Function — Recommended for the suspension of insulated pipe where the temperature does not require the use of slides, guides or rollers for movement.

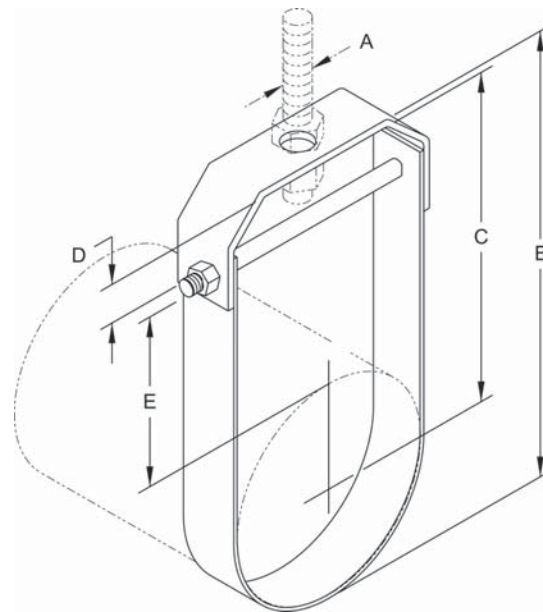
Approvals — Conforms to Federal Specification WW-H-171E, Type 1 and Manufacturers Standardization Society SP-69, Type1.

Maximum Temperature — 650°F

Finish — Plain

Note — Available in Electro-Galvanized and HDG finish or Stainless Steel.

Order By — Figure number, pipe size and finish



Dimensions • Weights

Pipe Size	Rod Size A	B	C	D	Max Insulation Thickness E	Max. Rec. Load Lbs.	Approx. Wt./100
3/4	3/8	4 ¹ / ₄	3 ³ / ₈	1/2	2	610	54
1	3/8	4 ¹ / ₁₆	3 ³ / ₄	5/8	2	610	59
1 ¹ / ₄	3/8	5 ¹ / ₄	4 ¹ / ₈	7/8	2	610	62
1 ¹ / ₂	3/8	5 ³ / ₄	4 ⁹ / ₁₆	1 ¹ / ₁₆	2	610	67
2	3/8	8 ¹ / ₁₆	7	1 ⁵ / ₈	4	610	84
2 ¹ / ₂	1/2	9 ⁹ / ₁₆	8	2	4	1130	185
3	1/2	10 ⁵ / ₁₆	8 ¹ / ₁₆	1 ³ / ₄	4	1130	205
4	5/8	11 ⁵ / ₈	8 ¹ / ₁₆	1 ¹⁵ / ₁₆	4	1430	252
5	5/8	12 ⁵ / ₈	9 ¹ / ₄	1 ³ / ₄	4	1430	309
6	3/4	14	9 ⁷ / ₈	1 ⁷ / ₈	4	1940	400
8	7/8	16 ³ / ₄	11	2	4	2000	607
10	7/8	19 ³ / ₁₆	12 ¹ / ₄	2 ¹ / ₈	4	3600	1032
12	7/8	21 ⁹ / ₁₆	13 ⁵ / ₈	2 ⁷ / ₁₆	4	3800	1315

Fig. 1F — Felt Lined Standard Clevis Hanger Fig. 1PVC — PVC Coated Standard Clevis Hanger



Size Range — Size 1/2" thru 8" pipe.

Material — Carbon Steel

Insulation Material — 3/16" felt

Function — The Fig. 1F is designed for the suspension of copper tube so as to prevent electrolysis between tube and hanger. The Fig. 1PVC is designed for steel or other pipe types of same O.D. Both Fig. 1F and Fig. 1PVC act to reduce noise and vibration in pipe or tube system.

Approvals — Underwriters' Laboratories Listed in the USA (**UL**) and Canada (**cUL**).

Maximum Temperature — 650°F

Finish — Plain

Note — When Fig. 1F is used for steel or other pipe types, consult factory for proper size hanger. Available in Electro-Galvanized and HDG finish or Stainless Steel.

Order By — Figure number, nominal tube size and finish

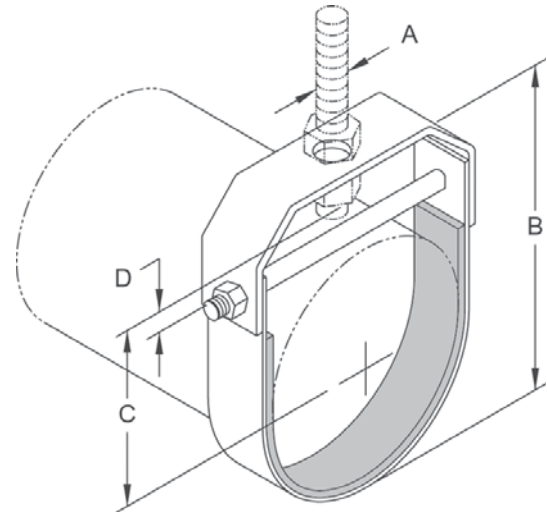


Fig. 1F

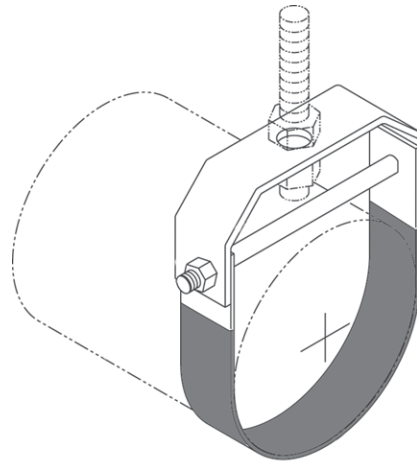


Fig. 1PVC

Dimensions • Weights

Pipe Size	Rod Size A		B	C	D	Max. Rec. Load Lbs.	Approx. Wt./100
	STD	NFPA					
1/2	3/8	3/8	27/8	1	1	610	36
3/4	3/8	3/8	3 ¹ / ₁₆	1 ¹¹ / ₁₆	1	610	38
1	3/8	3/8	3 ³ / ₈	1 ⁷ / ₈	1	610	43
1 1/4	3/8	3/8	3 ³ / ₄	2 ¹ / ₁₆	1	610	47
1 1/2	3/8	3/8	4 ¹ / ₁₆	2 ³ / ₁₆	1	610	50
2	3/8	3/8	4 1/2	2 ⁹ / ₁₆	1	610	56
2 1/2	1/2	3/8	5 1/2	3 ¹ / ₁₆	1	1130	125
3	1/2	3/8	6 1/8	3 ⁵ / ₁₆	1 1/4	1130	141
3 1/2	1/2	3/8	6 3/4	3 ⁹ / ₁₆	1 1/4	1130	153
4	5/8	3/8	7 ⁵ / ₈	4 ¹ / ₁₆	1 1/2	1430	191
5	5/8	1/2	8 ⁷ / ₈	5 ¹ / ₁₆	1 1/2	1430	236
6	3/4	1/2	10	5 ⁵ / ₁₆	1 1/2	1940	318
8	3/4	1/2	12 ³ / ₄	6 ¹⁵ / ₁₆	2	2000	429

Fig. 1U - "Ultra" Clevis Hanger

Size Range — Size 1/2" thru 4" pipe.

Material — Carbon Steel, Mil. Galvanized to G90.

Function — Recommended for the suspension of piping systems.

Features —

- Fast, easy, snap open and closed installation
- Strong lightweight design
- Flared edges ease installation for all pipe types and protect CPVC plastic pipe from abrasion
- Clevis bottom locks in place to prevent swinging

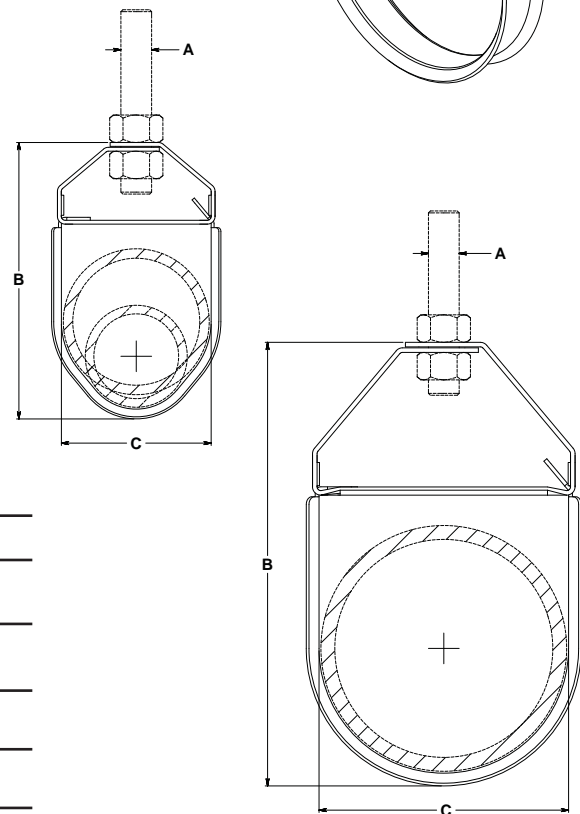
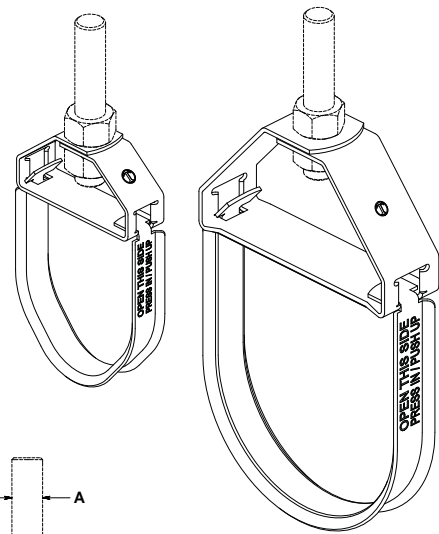
Approvals — Conforms to Manufacturers Standardization Society SP-58, Type1.

Maximum Temperature — 650°F

Finish — Mil. Galvanized

Order By — Figure number and pipe size

PATENT PENDING



Dimensions • Weights

Pipe Size	Rod Size A	B	C	Max. Rec. Load Lbs.	Approx. Wt./100
1/2 thru 1	3/8	3 ¹ / ₁₆	1 ⁹ / ₁₆	200	8
1 ¹ / ₄ thru 2	3/8	4 ¹ / ₂	2 ⁷ / ₈	250	18
2 ¹ / ₂	1/2	5 ³ / ₈	2 ¹⁵ / ₁₆	350	36
3	1/2	6 ³ / ₁₆	3 ⁹ / ₁₆	350	44
3 ¹ / ₂	1/2	7 ¹ / ₄	4 ¹ / ₁₆	350	50
4	1/2	7 ⁵ / ₈	4 ⁹ / ₁₆	400	55

Load Comparison Chart

Pipe Size	Max. Spacing per MSS	Sch. 40 Wt./Ft.	Sch. 80 Wt./Ft.	Water Wt./Ft. Sch. 40	Water Wt./Ft. Sch. 80	Sch. 40 Total Supported Load	Sch. 80 Total Supported Load	Fig. 1U Load Rating w/Safety Factor 3.5
1/2	7	0.85	1.09	0.13	0.10	6.87	8.32	200
3/4	7	1.13	1.47	0.23	0.19	9.52	11.61	200
1	7	1.68	2.17	0.37	0.31	14.36	17.37	200
1-1/4	7	2.27	3.00	0.65	0.56	20.43	24.86	250
1-1/2	9	2.72	3.63	0.88	0.77	32.39	39.56	250
2	10	3.65	5.02	1.45	1.28	51.04	63.01	250
2-1/2	11	5.79	7.66	2.07	1.83	86.48	104.43	350
3	12	7.57	10.25	3.20	2.86	129.24	157.32	350
3-1/2	13	9.11	12.51	4.28	3.85	174.07	212.68	350
4	14	10.79	14.98	5.51	4.98	228.20	279.44	400

Fig. 1V - "V" Bottom Clevis Hanger

Size Range — Size 1/2" thru 4" pipe.

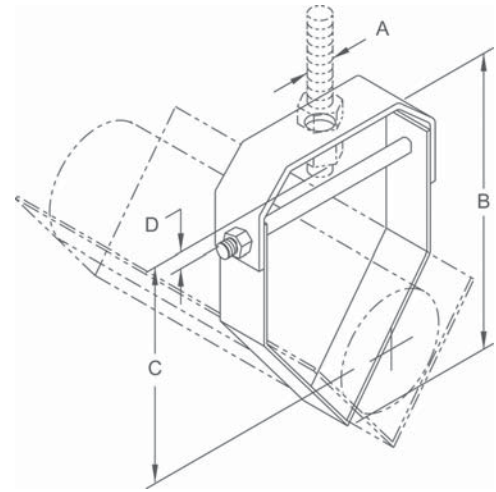
Material — Carbon Steel

Function — Recommended for the suspension of flexible plastic pipe. Use with Fig. 1VT "V" support trough for plastic pipe.

Finish — Plain

Note — Available in Electro-Galvanized and HDG finish or Stainless Steel.

Order By — Figure number, size number and finish



Dimensions • Weights

Size No.	Pipe Size	Rod Size A	B	C	D	Max. Rec. Load Lbs.	Approx. Wt./100
1	1/2	3/8	5½	4¾	1⅝	150	38
1	3/4	3/8	5½	4⅞/16	1⅝	150	38
1	1	3/8	5½	4⅞/8	1⅝	150	38
1	1¼	3/8	5½	4⅞/8	1⅝	150	38
1	1½	3/8	5½	4	1⅝	150	38
1	2	3/8	5½	3⅞/16	1⅝	150	38
2	2½	1/2	8¾	6⅝/8	1¾	150	115
2	3	1/2	8¾	6⅞/16	1¾	150	115
2	3½	1/2	8¾	5⅞/16	1¾	150	115
2	4	1/2	8¾	5⅞/16	1¾	150	115

Fig. 1VT - "V" Support Trough

Size Range — Size 1/2" thru 4" pipe.

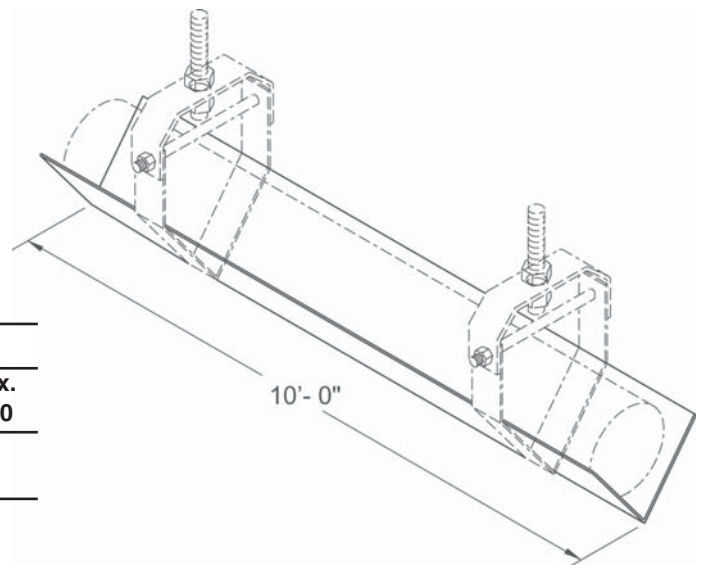
Material — Carbon Steel

Function — Designed for use with Fig. 1V as a support for plastic or other flexible pipe systems.

Finish — Pre-Galvanized

Note — Available in Stainless Steel material.

Order By — Figure number and size number



Dimensions • Weights

Size No.	For Pipe Size	Rod Length	Max. Rec. Load Lbs.	Approx. Wt./100
1*	1/2 - 2	10 ft.	150	540
2**	2½ - 4	10 ft.	150	1080

* Size No. 1 dimensions are 1.5 x 1.5 x 18ga x 10'

** Size No. 2 dimensions are 3 x 3 x 18ga x 10'