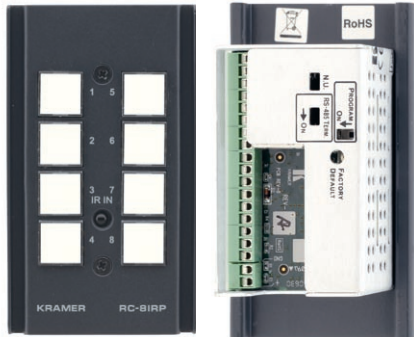
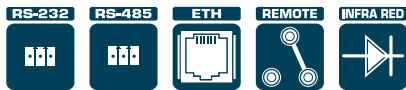


RC-8iRP

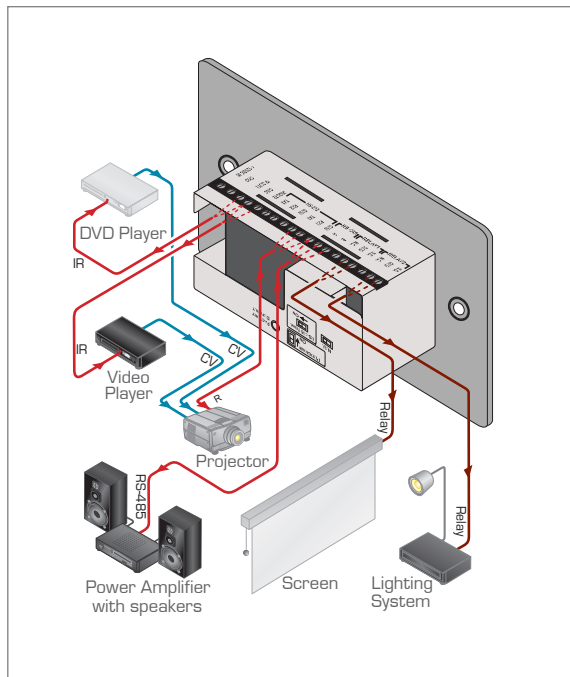
8-Button Table Mount Insert Media & Room Controller with IR Learning



The **RC-8iRP** is an 8-button media/room controller for multimedia rooms. It controls audio components, video components and other room facilities, such as lights, screens and projectors. It was specifically designed to fit inside the TC-PTPO1-B ("Power Tower Plus").

FEATURES

- **8 Back-Lit & Label Capable Buttons** - Up to 15 commands per macro and 4 toggling macros per button.
- **Ethernet Port** - Allows for easy setup with Kramer's Windows®-based configuration software from an internet connection anywhere in the world. Note: Although under certain conditions the Ethernet port of the RC-8iRP may be used to control an AV product, it is not designed for this purpose and we do not recommend doing this.
- **2 IR Ports.**
- **IR Learning Function** - Learn commands from IR remotes.
- **2 Relay Contact Closure Ports** - Conveniently control other room items related to the AV system such as raising and lowering drapes, the screen or the projector.
- **2 Bidirectional RS-232 and 1 RS-485 Ports** - Control up to three additional devices via serial control protocols.
- **Lock Out Feature** - The RC-8iRP can be locked and unlocked to prevent tampering.



TECHNICAL SPECIFICATIONS

PORTS:	2 RS-232 on terminal block connectors; 1 RS-485 on terminal block connectors; 1 ETHERNET RJ-45 port.
OUTPUTS:	2 relays on terminal block connectors (36V AC or DC, 2A, 60V AC maximum on non-inductive load); 2 IR emitters on terminal block connectors.
POWER SOURCE:	12V DC, 155mA.
DIMENSIONS:	11.4cm x 4.3cm x 6.9cm (4.49" x 1.70" x 2.72").
WEIGHT:	0.3kg (0.67lbs) approx.
ACCESSORIES:	Power supply, Java based control software (internal), Kramer's Windows®-based configuration software, single IR emitter cable.
OPTIONS:	Dual IR emitter cable, single IR emitter cable, IR extension cable.

