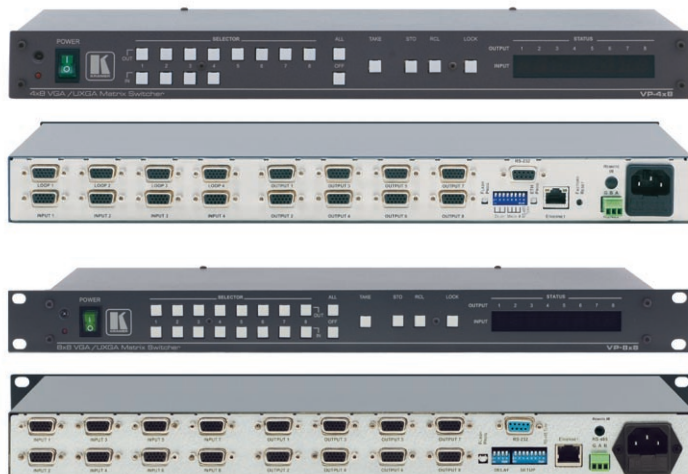


## VP-4x8/VP-8x8

4x8, 8x8 Computer Graphics Video Matrix Switchers



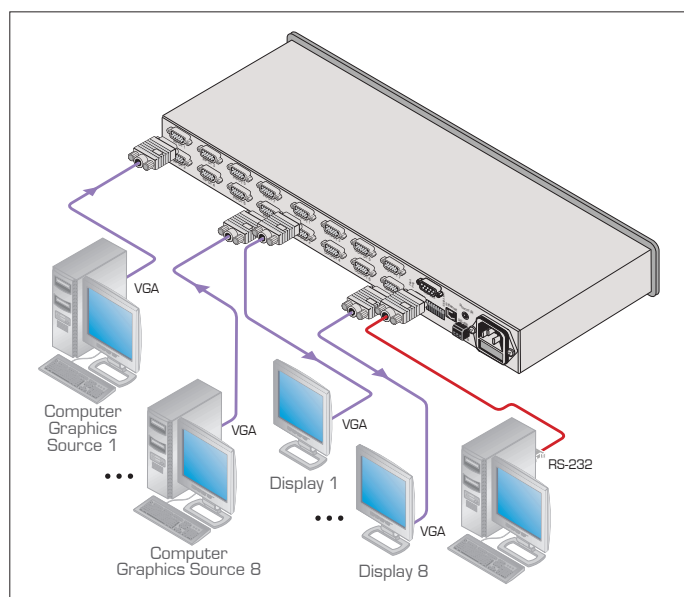
Compatible with HDTV component video signals when used with a breakout cable such as the Kramer C-GM/3RVF.



The **VP-4x8** and **VP-8x8** are high-performance matrix switchers for computer graphics video signals, with resolutions up to and exceeding UXGA on 15-pin HD connectors. The units can route any or all inputs to any or all outputs simultaneously.

### FEATURES

- High Bandwidth - 350MHz (-3dB).
- HDTV Compatible.
- Looping Inputs (VP-4x8).
- DC Coupled Inputs & Outputs (VP-4x8).
- Take Button - Executes multiple switches all at once.
- Memory Locations - Stores multiple switches as presets to be recalled and executed when needed.
- Delayed Switching™ - 0-3.5s. Switches sync ahead of video to provide near glitch-free switching of non-genlocked sources.
- Flexible Control - Front panel, RS-232 (K-Router™ Windows®-based Kramer software is included), RS-485, IR remote (included) and Ethernet.
- Active Input Indication™ Reporting - Each input button on the front panel automatically lights up when the unit detects that a video signal is connected to an input.
- Front Panel Control Lockout.
- Standard 19" Rack Mount Size - 1U.



### TECHNICAL SPECIFICATIONS

INPUTS:	4/8 VGA on 15-pin HD connectors (VGA through UXGA).
OUTPUTS:	8/8 VGA on 15-pin HD connectors (VGA through UXGA).
BANDWIDTH (-3dB):	350MHz.
MAX. OUTPUT LEVEL:	1.5Vpp.
RESOLUTION:	Up to UXGA.
DIFF. GAIN:	0.04%.
DIFF. PHASE:	0.04Deg.
K-FACTOR:	<0.05%.
S/N RATIO:	75dB.
CROSSTALK (all hostile):	-53dB.
CONTROLS:	22 front panel buttons, RS-232, RS-485, Ethernet.
COUPLING:	DC.
POWER SOURCE:	100-240V AC, 50/60Hz, 23VA.
DIMENSIONS:	19" x 7" x 1U (W, D, H) rack mountable.
WEIGHT:	2.7kg (6lbs) approx.
ACCESSORIES:	Power cord, null-modem adapter, Windows®-based Kramer control software, infrared remote control transmitter.
OPTIONS:	External remote IR receiver cable.

