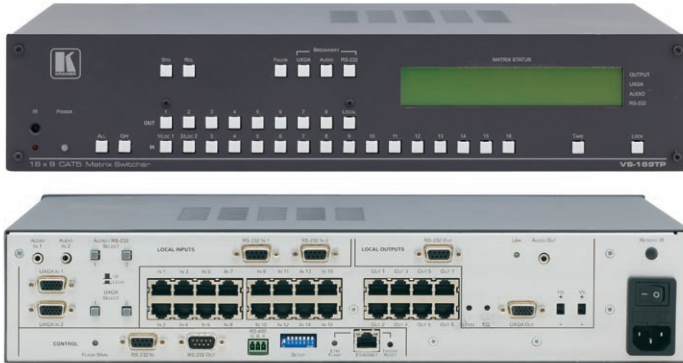


VS-169TP

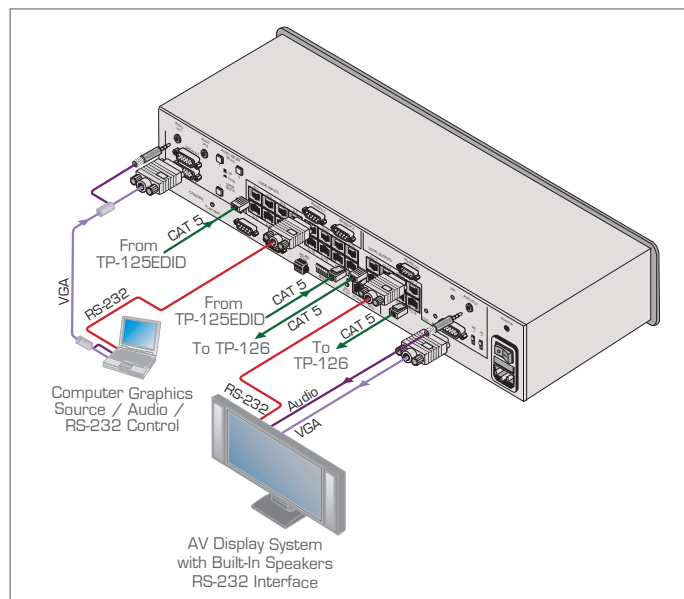
16x9 Twisted Pair Matrix Switcher

NEW



FEATURES

- **Inputs** - 16 remote CAT 5, 2 local built-in CAT 5, 2 unbalanced stereo audio, 2 UXGA, 2 RS-232. Inputs 1 & 2 can input either a twisted pair or local input signal.
- **Outputs** - 8 remote CAT 5; 1 local output of 15-pin HD, stereo audio & RS-232.
- **Wide Compatibility** - Compatible with most Kramer analog twisted pair transmitters/receivers.
- **HDTV Compatible.**
- **Follow or Breakaway Switching** - For all local video, audio, RS-232 signals.
- **Broadcast Quality Stereo Audio** - 48kHz/24-bit analog/digital conversion.
- **Indicators** - 4-line LCD display for separate route indication of video, audio, or RS-232.
- **Flexible Control Options** - Front panel, RS-232 (K-Router™ Windows®-based software is included), RS-485, Ethernet & IR remote (included).
- **Memory Locations** - Stores multiple switches as presets to be recalled and executed when needed.
- **Worldwide Power Supply** - 100-240V AC.
- **Standard 19" Rack Mount Size** - 2U. Rack "ears" included.



The **VS-169TP** is a high-performance twisted pair matrix switcher for video signals up to WUXGA/1080p, analog stereo, S/PDIF audio and bidirectional RS-232 signals. The unit can route any input to any or all outputs simultaneously.

TECHNICAL SPECIFICATIONS

SIGNAL INPUTS:	16 CAT 5 remote transmitters on RJ-45 connectors; 2 local RGBHV UXGA on 15-pin HD connectors; 2 unbalanced stereo audio on 3.5mm mini jacks; 2 local RS-232 controllers on 9-pin D-sub connectors.
SIGNAL OUTPUTS:	8 CAT 5 remote receivers on RJ-45 connectors; 1 local RGBHV UXGA on a 15-pin HD connector; 1 unbalanced stereo audio on a 3.5mm mini jacks; 1 local RS-232 controllers on a 9-pin D-sub connector.
CONTROL INPUTS/OUTPUTS:	1 RS-232 input on a 9-pin D-sub connector; 1 RS-232 output on a 9-pin D-sub connector; 1 RS-485 input/output on a 3-pin detachable terminal block; 1 Ethernet input/output on a RJ-45 connector.
RESOLUTION (VIDEO):	Up to WUXGA; HD compatible.
SAMPLE RATE (AUDIO):	24bit, 48kHz.
BAUD RATE (RS-232):	Up to 19200.
CONTROL (LOCAL VIDEO OUT):	EQ: 0 to +33dB @50MHz; Level: -7.5dB to +4.4dB; H & V polarity.
S/N RATIO (AUDIO):	>80dB.
THD+N (AUDIO):	< 0.03%.
POWER SOURCE:	100-240V AC, 50/60Hz, 36VA.
DIMENSIONS:	19" x 7" x 2U W, D, H, rack mountable.
WEIGHT:	3.8kg (8.4lbs) approx.
ACCESSORIES:	Power cord, Windows®-based control software, remote control transmitter, rack "ears".

