

Rescue Shoring
Industrial Contractor Series
Rescue Lifting Bags



Trench Rescue

Vehicle Stabilization

Confined Space Operations

Heavy Lift Operations

Structural Collapse

Lifting Bags

Utility Trench

Hazmat

Tents

Airshore Rescue Tools

 **HURST**
JAWS OF LIFE®

Why Trust Airshore

Photo:

The Hurst-Airshore Triple Column in use (US Pentagon, September, 2001) providing initial structural stabilization until permanent wood shores could be erected. These columns were set in place by FEMA US&R Virginia Task Force II during the initial days of operations at the Pentagon.

Our History.

Airshore, the architect of the world's first Aluminum Rescue Strut, has the knowledge and expertise in design and development to provide the highest level of trust in your equipment during difficult situations. For over 20 years, Airshore has been trusted by more rescue professionals and US&R teams than any other rescue strut.

Our Commitment.

We engineer and manufacture the highest quality aluminum rescue shoring.

We understand the rescue professional — we continually improve our products and seek to create new and more innovative solutions.

We remain focused on safety, never forgetting the service of our market to the community and remembering the reason for our service to the market.



Contents

Preparedness.

Dealing with everyday rescue challenges is difficult enough. When a unique situation arises in building collapse, trench rescue, or disaster management you want to trust your equipment and focus on the task at hand.

Airshore specializes in creating products that withstand the elements and perform under the worst conditions to provide the safest environment possible.

One of a Kind.

Airshore's unique two-pin assembly also serves as a built-in early warning system to detect possible strut failures. These thick durable pins and large holes are far less likely to become clogged with dirt in a rescue situation.

Trust Airshore for Performance & Reliability.

Rescue Shoring

1

Why Airshore

Commitment to the Industry

3 Product Introductions / Improvements

5 **Airshore Rescue Tools Applications**

7 Airshore Rescue Struts

8 Extensions

9 Attachments

11 Light & Heavy Duty Rails

12 Base Plates, Chains, & Ratchet Straps

13 Mounting Brackets

14 Miscellaneous

15 Air Supply Kits & Components

17 Trailers

18 **KITS**

QuickStrut™

Vehicle Kits

Trench Kits

Structural Collapse Kits

Miscellaneous Kits

Industrial Contractor Series/Industrial Shoring 26

27 Single Wall Panel Systems

28 Single Wall Accessories

29 Struts

30 Spreaders

31 Multi-Shore Kit

32 Multi-Shore Accessories

33 Air Supply

Airshore Product Introduction

The QuickStrut™

Quick and easy to deploy. Strong and lightweight. The QuickStrut is designed for fast, safe and reliable stabilization of a vehicle. The QuickStrut provides a new platform of innovation never before available

to the rescuer. With the ability to support over 2,200 pounds each, the QuickStrut is deployable in about one minute per strut, where other systems take much longer.

The key to the QuickStrut is the elimination of unnecessary parts that can cause confusion and delays. Designed as a one-piece system, it can be placed against the vehicle; deployed from either end. The self explanatory, simple to-use-system can be mastered by any rescue personnel.

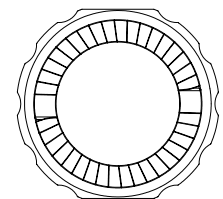
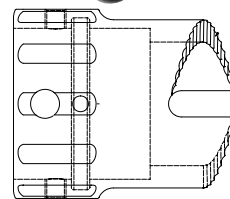
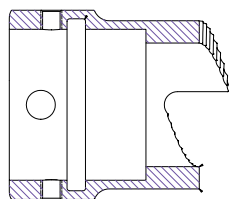
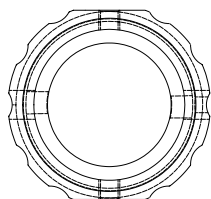
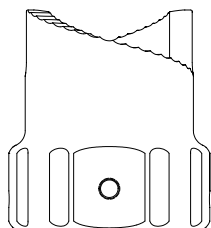


Airshore Product Improvement

Enhanced Collar

Rescue professionals told us how much they loved our collar design and its two pin system. It's safe, easy, effective and has a built-in early warning system unmatched by any other product available today. Our new design eliminates the possibility of the collar shifting while transporting the strut at the rescue scene.

The collar design uses two set screws along with a scored interior that allows the collar to swivel freely on the strut but not slide out of position. The new design is retrofittable to most previous Airshore struts.



Airshore Applications

Trench Rescue

The Airshore Rescue Tool can be utilized in many trench rescue situations. The struts are placed individually using plywood sheeting and Airshore spot shores. This is very similar to traditional timber shoring but with many improvements and advantages. Airshore Rescue Struts offer superior strength, fast placement and versatility for configurations such as L or T trenches when necessary. Most importantly, our tools are fully engineered from a Registered Professional Engineer, which make safety regulations and configurations for installation safe and easy to understand.



Vehicle Stabilization

The Airshore Rescue Tool system provides three options for standard size vehicle stabilization to facilitate faster extrication. Both the new QuickStrut™ and the Art-Lite systems are excellent for this application and use space-saving systems to stabilize standard size vehicles quickly and cost effectively. Airshore standard struts can be used for standard and large vehicle stabilization.



Large Vehicle Stabilization

The Airshore Rescue Tool enables rescuers to stabilize vehicles of all types quickly and securely, allowing extrication of victims to proceed. The Airshore Rescue Struts in conjunction with attachments, have the strength and versatility to stabilize multiple vehicles in various crash configurations — from cars, to transport trailers, to construction equipment or other heavy vehicles.



Heavy Lifting / Gantry

The Airshore Rescue Tool used with specific attachments can form an A-Frame (Gantry) configuration. This system facilitates the manual lifting and moving of objects where crane access is not an option. When rigged, this system is ideal for moving large heavy objects over short distances with limited manpower.



Confined Space / Tripod

The Airshore Rescue Tool with a few attachments and bases can construct a tripod system. The tripod will permit vertical entry and exit for one or more rescuers into a confined space area. The Tripod can also be used as a high point in high-line or embankment rescue operations. The construction of the Airshore Rescue Strut system makes this one of the strongest tripods on the market.

First on the market... and still number one!

Structural Collapse

The Airshore Rescue Tool provides unparalleled support for the temporary shoring of damaged or partially collapsed structures. By using Airshore Struts, rescue personnel can quickly and safely access and remove victims. With removal completed, timber shoring can be erected and the struts may be quickly moved to where they're needed. Individual struts can be used (with attachments) to stabilize windows, ceilings, doors and sloped floors or as part of a system like columns or rakers. The range of lengths and attachments available can make for effective shoring of most challenges in a building collapse.

High Strength Column

When extreme strength and support is necessary, the Airshore Rescue Strut is there. Using a combination of a tripod base and top with three struts, the column has a crush strength of over 80,000 pounds. Column configurations were used extensively in the US&R Operations at the Pentagon in 2001.



Vertical Shore

When there is a need for high strength support distributed over a large or small area, a vertical shore system can be formed using Airshore Rescue Struts and attachments. By placing individual struts in a row and securing Raker Rail Nailers to the struts, the formation can be cross-braced using timber which significantly increases the strength of the system.



Raker

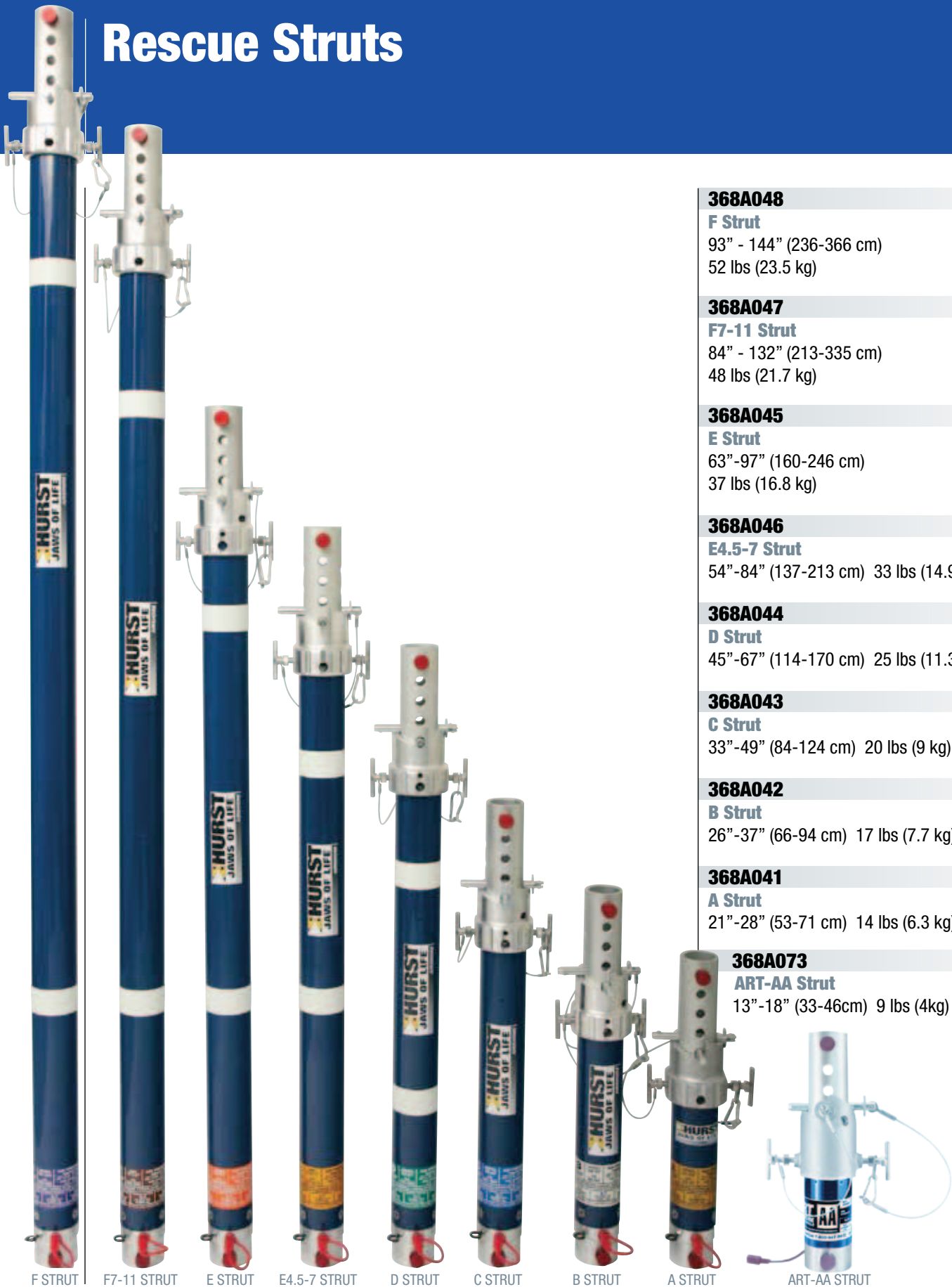
The Airshore Rescue Tool, along with attachments can be made into a Raker Rail assembly. This is an excellent system for the support of outer walls for buildings that are structurally compromised. Using Raker Nailers and wood cross bracing, the Raker Rails can be joined to increase structural stability.



Flying Raker

The Airshore Rescue Tool, along with attachments, can be made into a Flying Raker Rail assembly. This system differs from a standard Raker Rail as it allows the rescuer to assemble the Raker Rail over a debris pile while still providing the strength needed to support that portion of the building.

Rescue Struts



F STRUT

F7-11 STRUT

E STRUT

E4.5-7 STRUT

D STRUT

C STRUT

B STRUT

A STRUT

ART-AA STRUT

368A048

F Strut

93" - 144" (236-366 cm)
52 lbs (23.5 kg)

368A047

F7-11 Strut

84" - 132" (213-335 cm)
48 lbs (21.7 kg)

368A045

E Strut

63" - 97" (160-246 cm)
37 lbs (16.8 kg)

368A046

E4.5-7 Strut

54" - 84" (137-213 cm) 33 lbs (14.9 kg)

368A044

D Strut

45" - 67" (114-170 cm) 25 lbs (11.3 kg)

368A043

C Strut

33" - 49" (84-124 cm) 20 lbs (9 kg)

368A042

B Strut

26" - 37" (66-94 cm) 17 lbs (7.7 kg)

368A041

A Strut

21" - 28" (53-71 cm) 14 lbs (6.3 kg)

368A073

ART-AA Strut

13" - 18" (33-46cm) 9 lbs (4kg)

Rescue Extensions

ART-E6

6" Extension

6" (15 cm) 2 lbs (0.9 kg)

ART-E12

12" Extension

12" (30 cm) 4.5 lbs (2 kg)

ART-E18

18" Extension

18" (46 cm) 6 lbs (2.7 kg)

ART-E24

24" Extension

24" (61 cm) 8 lbs (3.6 kg)

ART-E36

36" Extension

36" (91 cm) 11.5 lbs (5.2 kg)

ART-E48

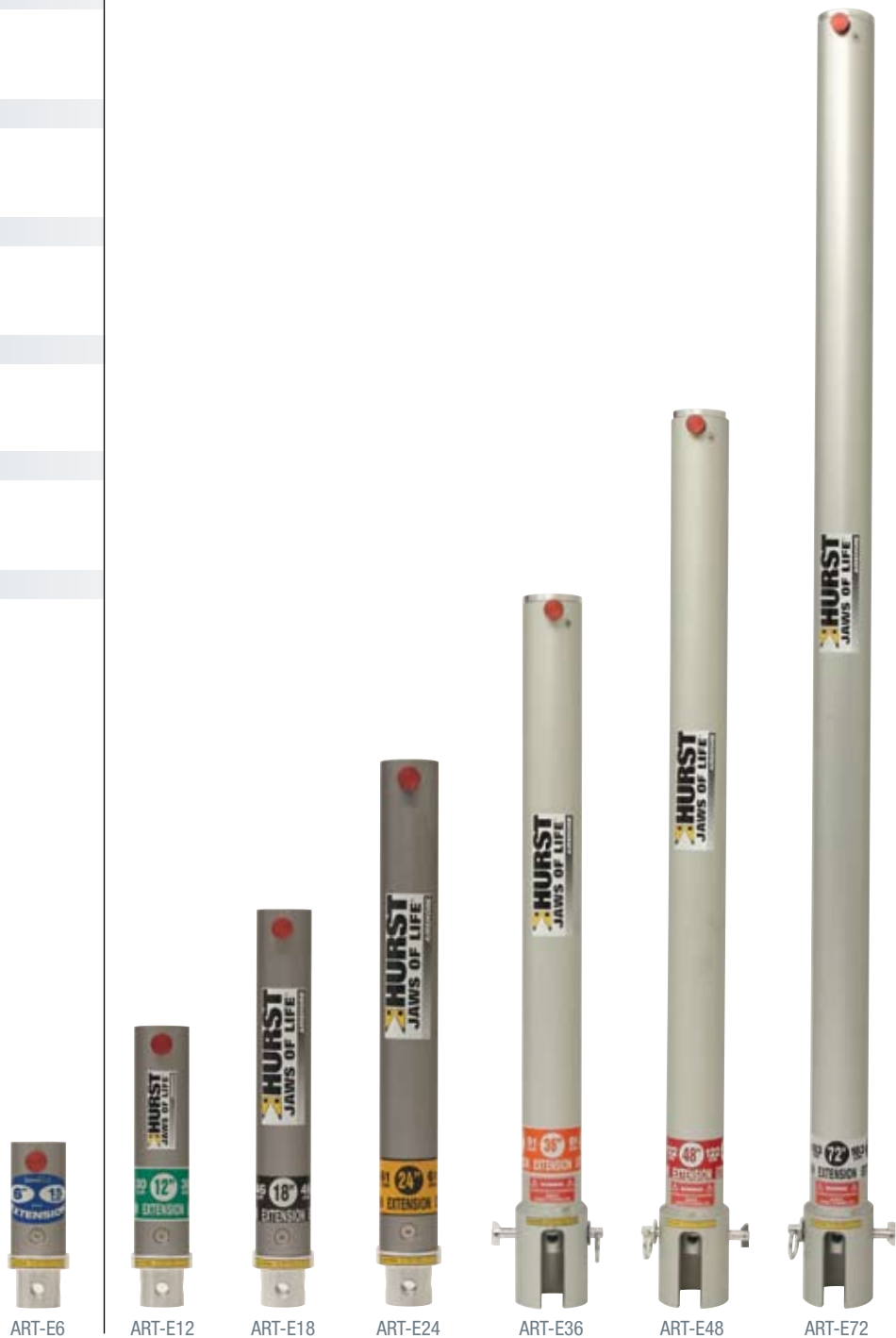
48" Extension

48" (122 cm) 16 lbs (7.3 kg)

ART-E72

72" Extension

72" (183 cm) 21.5 lbs (9.75kg)



ART-E6

ART-E12

ART-E18

ART-E24

ART-E36

ART-E48

ART-E72

Attachments

- Clevis attachments connect to base plate heads
- Clevis attachments add 2.5" to the length of the strut



ART-PC

22° Clevis

4" x 3.5" x 5.5" (10.2 x 8.9 x 14 cm)
2.5 lbs (1.1 kg)



ART-BP5

5" Base Plate

2" x 5" x 5" (5.1 x 12.7 x 12.7 cm)
2.25 lbs (1 kg)
Use with ART-C45 and ART-C60 only



ART-C45

45° Clevis

3.5" x 3.5" x 3.5" (9.5 x 8.9 x 8.9 cm)
1.5 lbs (0.7 kg)



ART-45SC

45° Static Clevis

4.5" x 4" x 3.5" (11.4 x 10.2 x 8.9 cm)
2.25 lbs (1 kg)



ART-RB

Rigid Base

6" x 6" x 2.5" (15.2 x 15.2 x 6.4 cm)
2.5 lbs (1.23 kg)
Adds 0.5" to length of strut



ART-C60

60° Clevis

3.5" x 3.5" x 5" (8.9 x 8.9 x 12.7 cm)
2.38 lbs (1.08 kg)



ART-SC

Static Clevis

4" x 3.5" x 5.5" (10.2 x 8.9 x 14 cm)
3 lbs (1.4 kg)



ART-FB

Flat Base

2.5" x 5" x 5" (6.4 x 12.7 x 12.7 cm)
2 lbs (0.9 kg)
Adds 0.5" to length of strut

Attachments



ART-RH
Rhino Head Attachment
 5" x 4" x 4.5"
 (12.7 x 10.2 x 11.4 cm)
 2.5 lbs (1.1 kg)
 Adds 2.5" to length of strut



ART-CW
Chain Wedge
 6.75" x 3" (17.2 x 7.6 cm)
 3 lbs (1.4 kg)
 Adds 4.75" to length of strut



ART-PT
Point Attachment
 7" x 3"
 (17.8 x 7.6 cm)
 2 lbs (0.9 kg)
 Adds 5" to length of strut



ART-VB
V-Block
 4" x 5" x 3"
 (10.3 x 12.7 x 7.6 cm)
 2 lbs (0.9 kg)
 Adds 2" to length of strut



ART-LG
L-grip
 5" x 4" x 6"
 (12.7 x 12.1 x 15.2 cm)
 1.5 lbs (0.7 kg)
 Adds 0.19" to length of strut



ART-CG4
4" C-grip
 4.75" x 6" x 4"
 (12.1 x 15.2 x 10.2 cm)
 1.5 lbs (0.8 kg)
 Adds 0.19" to length of strut



ART-CG6
6" C-grip
 4.75" x 6" x 6"
 (12.1 x 15.2 x 15.2 cm)
 1.75 lbs (0.8 kg)
 Adds 0.19" to length of strut



ART-CG8
8" C-grip
 4.75" x 6" x 8"
 (12.1 x 15.2 x 20.3 cm)
 1.75 lbs (0.8 kg)
 Adds 0.19" to length of strut



ART-SL15
15° Swivel for Struts
 5" x 4" (12.7 x 10.2 cm)
 1.5 lbs (0.8 kg)
 Adds 2" to length of strut



ART-S23
23° Swivel for Strut
 4" x 5" x 5"
 (10.2 x 12.7 x 12.7 cm)
 3.5 lbs (1.6 kg)
 Adds 2" to length of strut



ART-P45
45° Pivot
 4" x 5" x 5"
 (10.2 x 12.7 x 12.7 cm)
 3.4 lbs (1.5 kg)
 Adds 2.25" to length of strut



ART-P60
60° Pivot
 5" x 5" x 5.6"
 (12.7 x 12.7 x 14.2 cm)
 4.3 lbs (1.9 kg)
 Adds 3.5" to length of strut

Raker Rails



Light Duty Raker Rails*

ART-RR4

4' x 5.75" x 1.5" (1.2 m x 14.6 x 3.8 cm)
16 lbs (7.3 kg)

ART-RR5

5' x 5.75" x 1.5" (1.5 m x 14.6 x 3.8 cm)
20 lbs (9.1 kg)

ART-RR6

6' x 5.75" x 1.5" (1.8 m x 14.6 x 3.8 cm)
24 lbs (10.9 kg)

ART-RR8

8' x 5.75" x 1.5" (2.4 m x 14.6 x 3.8 cm)
32 lbs (14.5 kg)

ART-RR10

10' x 5.75" x 1.5" (3 m x 14.6 x 3.8 cm)
40 lbs (18.1 kg)

*Sold as singles unless otherwise noted.



ART-LDCON*

Light Duty Rail Connector

24" x 5" x 1.54" (61 x 12.7 x 3.56 cm)
7 lbs (3.2 kg)

1 Light Duty Rail Connector Connects
2 Raker Rails to Extend Length



ART-RR18

18" Spot Shore Rails

18" x 5.75" x 1.5"
(45.7 x 14.6 x 3.8 cm)

15 lbs (7.2kg)
Set of 2

ART-RR36

36" Spot Shore Rails

36" x 5.75" x 1.5"
(91.4 x 14.6 x 3.8 cm)

31 lbs (14.7 kg)
Set of 2



Heavy Duty Raker Rails (Sets of 2)

ART-HDR4

4' x 6.75" x 3.5"
(1.2 m x 17.1 x 9.65 cm)
59 lbs (26.8 kg)

ART-HDR8

8' x 6.75" x 3.5"
(2.4 m x 17.1 x 9.65 cm)
117 lbs (53.1 kg)

ART-HDR5

5' x 6.75" x 3.5"
(1.5 m x 17.1 x 9.65 cm)
74 lbs (33.6 kg)

ART-HDR10

10' x 6.75" x 3.5"
(3 m x 17.1 x 9.65 cm)
147 lbs (66.7 kg)

ART-HDR6

6' x 6.75" x 3.5"
(1.8 m x 17.1 x 9.65 cm)
88 lbs (39.9 kg)

ART-HDR12

12' x 6.75" x 3.5"
(3.7 m x 17.1 x 9.65 cm)
176 lbs (79.4 kg)



ART-HDCON*

Heavy Duty Rail Connector

24" x 5" x 3.25" (61 x 12.7 x 8.26 cm)
10 lbs (4.5 kg)

1 Heavy Duty Rail Connector Connects
2 Raker Rails to Extend Length

Raker Rail Attachments

Base Plates

- Base Plates and Tripod Head **MUST** be used with a Clevis attachment. The Strut will **NOT** attach directly to the Base Plate or Tripod Head.

Chains & Ratchet Straps



ART-RRR
Raker Rail Adapter
 7.5" x 5" x 5" (19.1 x 12.7 x 12.7 cm)
 2.5 lbs (1.1 kg)



ART-BPB12
12" Base Plate with Bracket
 12" x 12" x 4" (30.5 x 30.5 x 10.2 cm)
 9.75 lbs (4.4 kg)



ART-LC12
12' Stabilization Chain with J-Hook
 12' (3.7 cm) 35 lbs (15.9 kg)



ART-RRN
Raker Rail Nailer
 5.25" x 8" x 12" (13.3 x 20.3 x 30.5 cm)
 9.5 lbs (4.3 kg)



ART-BP6
6" Base Plate
 6" x 6" x 2.4" (15.2 x 15.2 x 6.1 cm)
 3.75 lbs (1.70 kg)



ART-LC06
6' Stabilization Chain with J-Hook
 6' (1.83 cm) 20 lbs (9.1 kg)



ART-RNB
Replacement Nailer Block
 1.5" x 8" x 12" (3.8 x 20.3 x 30.5 cm)
 5.75 lbs (2.6 kg)



ART-TH
Tripod Head
 2.75" x 16" x 16" (6.9 x 40 x 40.6 cm)
 27 lbs (12.3 kg)



ART-RS
Ratchet Strap
 10' (3 cm) 1.75 lbs (0.8 kg)
 Rated over 9,000 lbs.



ART-RSE
Ratchet Strap Extension
 15' (4.6 cm) 1 lbs (0.4 kg)
 Rated over 9,000 lbs.

Mounting Brackets



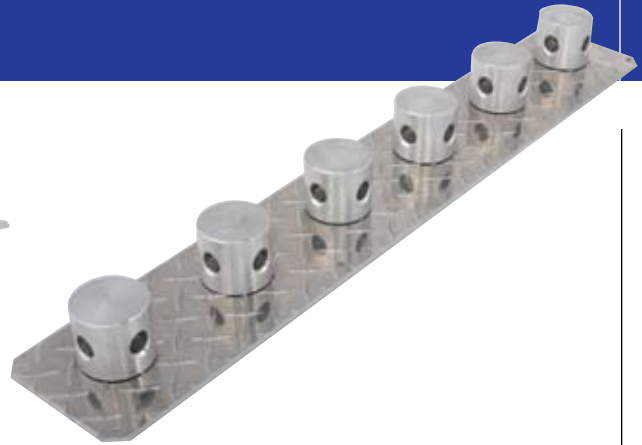
ART-MB6T

Top Mounting Bracket

7.25" x 30" x 5.25" (18.4 x 76.2 x 13.3 cm)

9 lbs (4.1 kg)

For 6 ART Struts



ART-MB6B

Bottom Mounting Bracket

5" x 30" x 2.25" (12.7 x 76.2 x 5.7 cm)

6.75 lbs (3.1 kg)

For 6 ART Struts or 6" - 24" Extensions

ART-MB3T

Top Mounting Bracket

7.25" x 15" x 5.25"
(18.4 x 38.1 x 13.3 cm)

4.5 lbs (2 kg)

For 3 ART Struts



ART-MB3B

Bottom Mounting Bracket

5" x 15" x 2.25" (12.7 x 38.1 x 5.7 cm)

3.35 lbs (1.5 kg)

For 3 ART Struts or
6" - 24" Extensions



ART-MB1T

Top Mounting Bracket

7.25" x 5" x 5.25"
(18.4 x 12.7 x 13.3 cm)

1.5 lbs (0.7 kg)

For 1 ART Strut



ART-MB1B

Bottom Mounting Bracket

5" x 5" x 2.25" (12.7 x 12.7 x 5.7 cm)

1.25 lbs (0.6 kg)

For 1 ART Strut or
6" - 24" Extensions



ART-MB2ET

Top Mounting Bracket

14" x 2" x 6.25"
(35.56 x 5.12 x 15.9 cm)

1.63 lbs (0.74 kg)

For 2 - 36" 48" or
72" Extensions



ART-MB2EB

Bottom Mounting Bracket

14" x 5" x 2.25" (35.56 x 12.7 x 5.7 cm)

2.5 lbs (1.1 kg)

For 2 Extensions of any length,
not for use with Struts



ART-MB4ET

Top Mounting Bracket

28" x 2" x 6.25"
(71.12 x 5.12 x 15.9 cm)

3.25 lbs (1.47 kg)

For 4 - 36" 48" or
72" Extensions



ART-MB4EB

Bottom Mounting Bracket

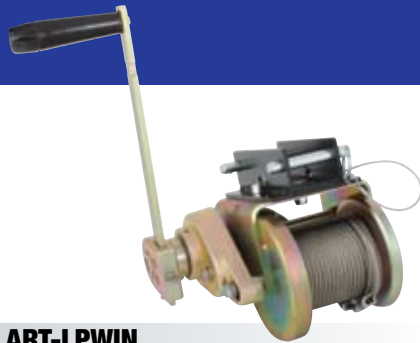
28" x 5" x 2.25" (71.12 x 12.7 x 5.7 cm)

5 lbs (2.3 kg)

For 4 Extensions of any length,
not for use with Struts



Miscellaneous



ART-LPWIN

Winch for ART Lite Pod (shown)

ART-HPWIN

Winch for ART Heavy Tripod Pod

Comes with 75' of 302/304
Stainless Wire Rope
24 lbs (10.9 kg)
Man Rated for 310 lbs



ART-LP - Lite Pod Kit

Quantity	Name
3	Adjustable Legs
3	6" Base Plates
1	Safety Chain (310' long)

Total Kit Weight: 70 lbs (31.8 kg)

An optional Carrying Case for the Lite Pod Kit is available, please use ART-LPC when ordering.

ART-PK

Picket

40" x ϕ 1" x 2" (101.6 x 2.5 x 5.1 cm)
9 lbs (4.1 kg)



ART-ELC

Expandable Load Cell

7.5" x 3.25" x 5" (19.1 x 8.2 x 12.7 cm)
5.5 lbs (2.5 kg)



ART-GPL

Gin Pole Lid

8" x 8" x 3" (20.3 x 20.3 x 7.6 cm)
3 lbs (1.4 kg)



ART-GPP

Gin Pole Pivot

9" x 3" (22.8 x 7.6 cm)
5 lbs (2.3 kg)



ART-LH

Lowering Hook

14.5' x 1" (4.4 x 2.5 cm)
0.75 lbs (0.3 kg)
For lowering struts into trenches

ART Attack Bar

ART-ATK24

24" (60.1 cm) 8 lbs (3.6 kg)

ART-ATK30

30" (76.2 cm) 9 lbs (4.1 kg)

ART-ATK36

36" (91.4 cm) 10 lbs (4.5 kg)

ART-ATK42

42" (106.7 cm) 11 lbs (5 kg)

Extrication Gloves

Hurst Jaws of Life
Extrication
Gloves are
constructed of
40% Kovenex™
fibers; tough
and comfortable with
excellent gripping surface.



525R042 Medium

525R043 Large

525R044 Extra Large

525R045 2X Large

159A169

Operations Manual

Includes assembly
information as well
as tabulated data for
configurations such as:
Columns, Raker Rails,
Tripods, etc.



Air Supply Kits & Components



PAI-0001
High Pressure Regulator
 5000 PSI / 340 BAR
 7" x 7" x 5"
 (17.8 x 17.8 x 12.7 cm)
 2.5 lbs (1.1 kg)



PAI-0002RA1
Single Low Pressure Regulator
 3000 PSI / 204 BAR
 5.5" x 5" x 4"
 (16.5 x 12.7 x 10.2 cm)
 3 lbs (1.4 kg)



PAI-0002RA2
Dual High Pressure Regulator
 3000 PSI / 204 BAR
 5.5" x 14.5" x 19.5"
 (13.9 x 36.8 x 49.5 cm)
 3 lbs (1.4 kg)



AIR-DMT
Dual Strut Control Deadman Type
 9" x 6" x 3.5" (22.9 x 15.24 x 8.89 cm)
 3 lbs (1.36 kg)
 For Trench Rescue



AIR-DM
Deadman Control
 7" x 2.5" x 3" (17.8 x 6.4 x 7.6 cm)
 1.4 lbs (0.6 kg)
 35 PSI/2.4 BAR for Building Collaspe,
 Tripod & Column



AIR-DVR
Dump Valve
 6.75" x 4" x 1.5"
 (15.24 x 10.2 x 3.8 cm)
 1.25 lbs (0.6 kg)
 For Trench Applications



PAI-0014
Quick Coupler
 2" x 1" x 1"
 (5.1 x 2.5 x 2.5 cm)
 0.25 lbs (0.11 kg)



266A151
Breathing Air Adapter
 2" x 1" x 1"
 (5.1 x 2.5 x 2.5 cm)
 0.25 lbs (0.11 kg)

Air Supply Kits & Components



AIR-049R

Single High Pressure Air Supply Assembly

Consists of:
PAI-0001, AIR-DVR,
PAI-0009R, PAI-0007R
16 lbs (7.3 kg)



AIR-051R

Dual High Pressure Air Supply Assembly

5000 PSI / 340 BAR
Consists of:
PAI-0001, AIR-DMT, PAI-0009R,
PAI-0007R, PAI-0007B
19 lbs (8.6 kg)



PAI-0007B-Blue (shown) **PAI-0007R-Red**

15' Whip Hose
15' x 0.375" (4.6 m x 0.95 cm)
2.5 lbs (1.1 kg)



AIR-THA

Tripod Hose Assembly
4' x 42" x 0.375"
(122 x 106.7 x 0.95 cm)
3 lbs (1.4 kg)



AIR-2MH

2-Way Manifold
8' x 0.375" (2.4 m x 9.65 cm)
4 lbs (1.8 kg)
For Heavy Duty Rails



PAI-0009R-Red (shown)

PAI-0009BK-Black
35' Supply Hose
35' x 0.375" (10.7 m x 0.95 cm)
5.5 lbs (2.5 kg)

Trailers



Customized.

Airshore Trailers are custom-designed and manufactured to fit your department's needs. Various sizes and configurations of trailers are available. Hurst Jaws of Life/Airshore will work with you to provide a trailer that best suits your individual needs.



Airshore Kits

Section Contents



19-20 Vehicle Stabilization Kits

QuickStrut™

Lite Vehicle Stabilization Kit

Basic Vehicle Stabilization Kit

Intermediate Vehicle Stabilization Kit



21-22 Trench Kits

Basic Trench Kit

Intermediate Trench Kit

Advanced Trench Kit



23-24 Collapse & Rescue Kits

Building Collapse Kit

Urban Search and Rescue Lite Kit

Urban Search and Rescue Kit



25 Miscellaneous Kits

A-Frame/Gantry Kit

Tri-pod Kit

Raker Rail Kit

Vehicle Stabilization Kits



QuickStrut™ Kit

362A491

Consists of:

- 2 - QuickStruts
- 2 - Adjustment Wrenches
- 1 - Carrying Case

10" x 11" x 54"
(25.4 x 27.9 x 137.1 cm)
Kit weight 70 lbs (31.75 kg)

Single Strut: 48"-78" (122-200 cm)
Single Strut: 28 lbs (12.7 kg)



541A043

QuickStrut™ Accessory Kit

Consists of:

- 2 - Cluster Hooks
- 2 - Axle Straps
- 2 - Protective Sleeves
- 1 - Accessory Bag

6 lbs (2.7 kg)



541A044

Protective Sleeves for Straps

1 oz (.03 kg)

ART-Lite Vehicle Stabilization Kit

ART-LK

72.2 lbs (31.8 kg)

Consists of:

- 2 - ART Lite 16" to 23"
- 2 - ART Lite 28" to 41"
- 2 - 12" to 18" Adjustable Extensions
- 2 - 18" to 30" Adjustable Extensions
- 4 - 10' Ratchet Straps
- 2 - 15' Ratchet Strap Extensions
- 2 - Chain Wedge Attachments
- 2 - Diamond Head Attachments
- 2 - Rhino Head Attachments



Vehicle Stabilization Kits

368A017 – Basic Vehicle Stabilization Kit

368A018 – Intermediate Vehicle Stabilization Kit

Quantity	Quantity	Part	Name
2	2	B	Airshore Rescue Strut
	2	E4.5-7	Airshore Rescue Strut
	2	ART-E12	12" Extension
2	2	ART-E24	24" Extension
	2	ART-SL15	15° Swivel
2	4	ART-45SC	45° Static Clevis
2	2	ART-VB	V-Block
2	2	ART-CW	Chain Wedge
2	4	ART-BP6	6" Base Plate
	2	ART-RB	Rigid Base
2	4	ART-RS	Ratchet Strap
2	2	ART-RSE	Ratchet Strap Extension

77.5 lbs
(24.2 kg)

169 lbs
(76.7 kg)

Total Kit Weight



ART-SL15



ART-45SC



ART-VB



ART-CW



ART-BP6



ART-RB



ART-RS



ART-RSE



ART-E12



ART-E24



B STRUT



E4.5-7 STRUT

Trench Kits



ART-LH
● ● ●



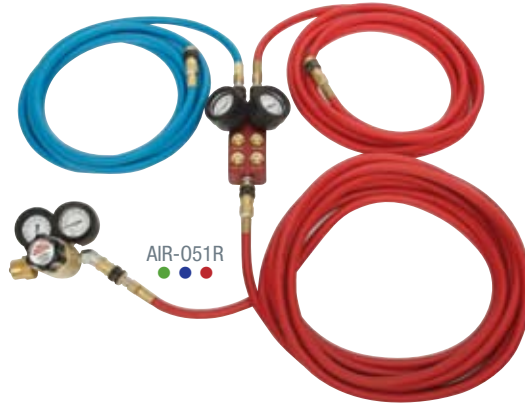
ART-S23
● ● ●



ART-FB
● ● ●



ART-RR18
● ● ●



AIR-051R
● ● ●



ART-E6
● ● ●



ART-E12
● ● ●



ART-E24
● ● ●



A STRUT
● ● ●



B STRUT
● ● ●



C STRUT
● ● ●



E4.5-7 STRUT
● ● ●



F7-11 STRUT
● ● ●



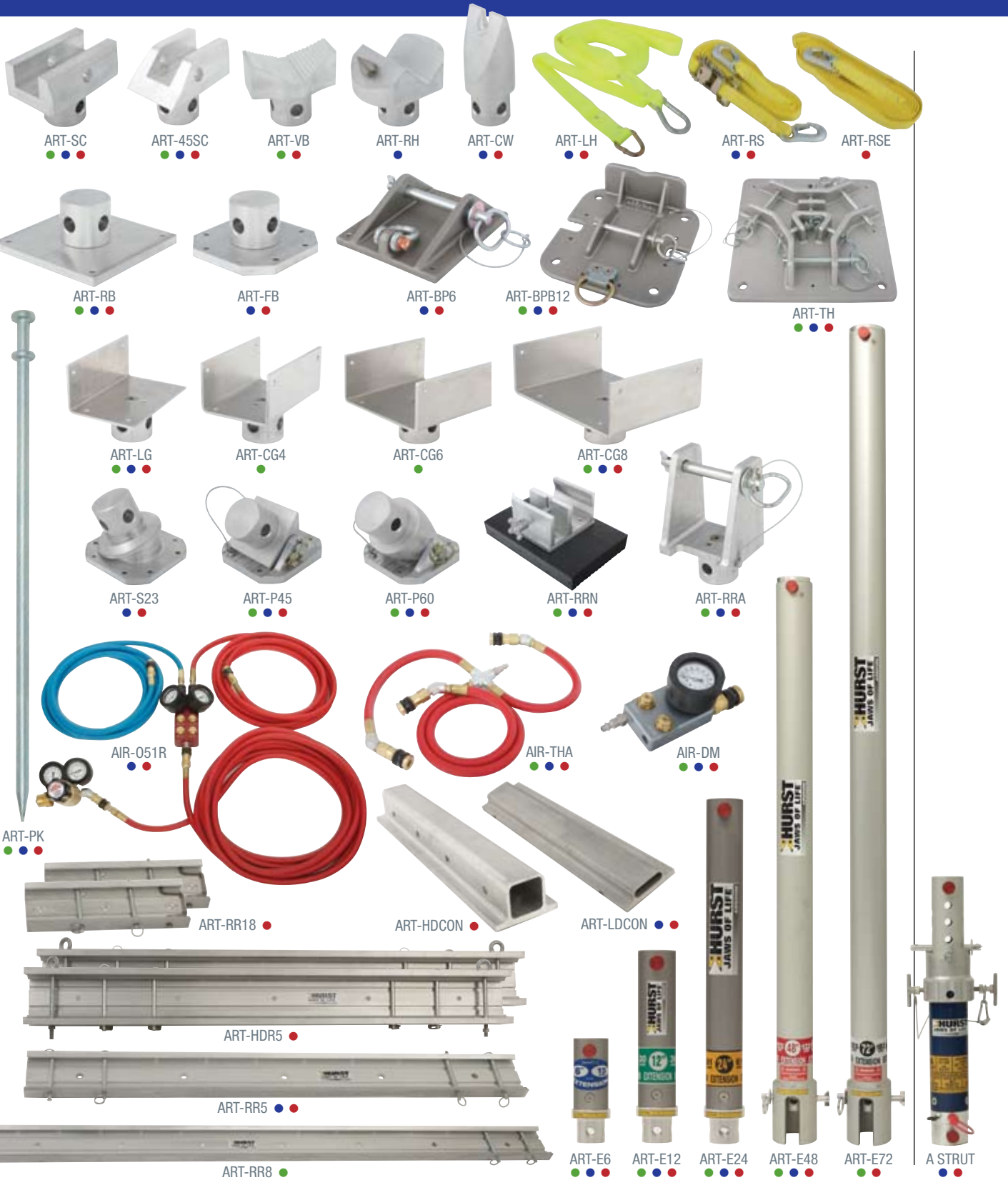
ART-HDR10
●

Trench Kits

368A019 Basic Trench Kit	368A020 Intermediate Trench Kit	368A021 Advanced Trench Kit	Part	Name
Quantity	Quantity	Quantity		
4	4	6	A	Airshore Rescue Strut
4	4	6	B	Airshore Rescue Strut
	4	6	C	Airshore Rescue Strut
		6	E4.5-7	Airshore Rescue Strut
		6	F7-11	Airshore Rescue Strut
4	4	6	ART-E6	6" Extension
4	4	6	ART-E12	12" Extension
	4	6	ART-E24	24" Extension
8	12	18	ART-FB	Flat Base
8	12	18	ART-S23	23° Swivel Base
2	2	2	ART-LH	Lowering Hook
4	6	6	ART-RR18	18" Spot Shore Rails (Sets of 2)
		2	ART-HDR10	10' Heavy Duty Rails (Sets of 2)
1	1	1	AIR-051R	Dual High Pressure Air Supply Assembly
252.5 lbs (114.5 kg)	442.5 lbs (200.5 kg)	1,343.5 lbs (609.4 kg)	Total Kit Weight	



Structural Collapse Kits



368A022
Building
Collapse
Kit

368A027
Urban Search
& Rescue Lite
Kit

368A026
Urban Search
& Rescue
Kit



Quantity	Quantity	Quantity	Part	Name
	4	6	A	Airshore Rescue Strut
6		6	B	Airshore Rescue Strut
6	4	6	C	Airshore Rescue Strut
4	3	6	E4.5-7	Airshore Rescue Strut
4	3	6	F7-11	Airshore Rescue Strut
6	4	6	ART-E6	6" Extension
6	4	6	ART-E12	12" Extension
6	4	6	ART-E24	24" Extension
4	2	4	ART-E48	48" Extension
4		4	ART-E72	72" Extension
	8	14	ART-S23	23° Swivel Base
	2	4	ART-BP6	6" Base Plate
	8	14	ART-FB	Flat Base
6	8	12	ART-RB	Rigid Base
4	3	4	ART-BPB12	12" Base Plate with Bracket
2	2	2	ART-TH	Tripod Head
2			ART-CG4	4" C-Grip
2			ART-CG6	6" C-Grip
4	6	6	ART-CG8	8" C-Grip
4	4	6	ART-LG	L-Grip
4	2	4	ART-P60	60° Pivot
4	2	4	ART-P45	45° Pivot
2		2	ART-VB	V-Block
6	6	6	ART-SC	Static Clevis
4	4	4	ART-45SC	45° Static Clevis
	2		ART-RH	Rhino Head Attachment
	2	2	ART-CW	Chain Wedge
	4	4	ART-RR5	5' Raker Rail
4			ART-RR8	8' Raker Rail
		6	ART-RR18	18" Spot Shore Rails (Sets of 2)
		4	ART-HDR5	5' Heavy Duty Rails (Sets of 2)
12	4	12	ART-RRN	Raker Rail Nailer
4	2	4	ART-RRA	Raker Rail Adapter
	2	2	ART-LDCON	Light Duty Rail Connector
		4	ART-HDCON	Heavy Duty Rail Connector
	4	4	ART-RS	Ratchet Strap
		2	ART-RSE	Ratchet Strap Extension
	1	1	ART-AFK	A-Frame Kit
	1	1	AIR-051R	Dual High Pressure Air Supply Assembly
1	1	1	AIR-DM	Deadman Control
1	1	1	AIR-THA	Tripod Hose Assembly
	2	2	ART-LH	Lowering Hook
1	1	1	364A026	Safety Chain
8	4	8	ART-PK	Picket
1,327.8 lbs (601.5 kg)	981.05 lbs (445 kg)	2,181.7 lbs (988.3 kg)	Total Kit Weight	

Miscellaneous Kits

368A024 A-Frame / Gantry Kit

368A025 Tripod Kit

368A023 Raker Rail Kit

Quantity	Quantity	Quantity	Part	Name
2	3	2	E4.5-7	Airshore Rescue Strut
		2	F7-11	Airshore Rescue Strut
2	3	2	ART-E24	24" Extension
	1	2	ART-BPB12	12" Base Plate with Bracket
		2	ART-TH	Tripod Head
	6	2	ART-P60	60° Pivot
		2	ART-P45	45° Pivot
		2	ART-C45	45° Clevis
		4	ART-RR5	5' Raker Rail
		4	ART-RRN	Raker Rail Nailers
		2	ART-RRR	Raker Rail Adapter
	1	2	ART-LDCON	Light Duty Rail Connector
1		4	364A026	Safety Chain
			ART-PK	Picket
			ART-AFK	A-Frame Kit (see list and photo below)

148.5 lbs
(67.4 kg)

269.25 lbs
(122 kg)

389.36 lbs
(176.4 kg)

Total Kit Weight



ART-AFK - A-Frame Kit ●

Quantity	Name
1	A-Frame Head
2	A-Frame Pivot
2	15° Clevis

Total Kit Weight: 33 lbs (15 kg)



Industrial Contractor Series

Airshore trench shoring systems are simple to use, light enough to hand carry, may be transported in the back of a pick-up truck, require no special training to assemble and offer incredible protection for anyone working below grade. Airshore's Industrial Contractor Series is easy to use, transport and is built from the finest materials. Airshore products provide the flexibility you need in today's competitive environment — an outstanding value.



Single Wall Aluminum Panel Systems

- Meets OSHA and Canadian Regulations
- Light-Weight; Easy to Assemble with the flexibility to create a custom workspace
- May be used with all static and adjustable spreaders as well as pneumatic standard and swivel struts
- Available in 2 and 4 foot heights
- Applicable to 12 foot depths in C60 soils
- End shoring may be used to create a trench box
- Legs, wheel kits and accessories complete the package



Side Single Wall Trench Panels (Available in 2' and 4' Heights – Sets of 2)

End Single Wall Trench Shield Panels (Sold as single unit)

2' Height	4' Height	2' Height
LPS-26 2' x 6' (0.6 x 1.85 m) 107 lbs (48 kg)	LPS-45 4' x 5' (1.2 x 1.5 m) 169 lbs (77 kg)	LPS-23ES 2' x 3' (0.6 x 0.9 m) 25 lbs (11 kg)
LPS-27 2' x 7' (0.6 x 2.2 m) 117 lbs (53 kg)	LPS-46 4' x 6' (1.2 x 1.85 m) 185 lbs (84 kg)	LPS-24ES 2' x 4' (0.6 x 1.2 m) 28 lbs (13 kg)
LPS-28 2' x 8' (0.6 x 2.5 m) 128 lbs (58 kg)	LPS-47 4' x 7' (1.2 x 2.2 m) 201 lbs (91 kg)	LPS-25ES 2' x 5' (0.6 x 1.5 m) 32 lbs (14 kg)
LPS-210 2' x 10' (0.6 x 3.1 m) 148 lbs (67 kg)	LPS-48 4' x 8' (1.2 x 2.5 m) 218 lbs (99 kg)	4' Height
	LPS-410 4' x 10' (1.2 x 3.1 m) 250 lbs (114 kg)	LPS-43ES 4' x 3' (1.2 x 0.9 m) 50 lbs (23 kg)
	LPS-412 4' x 12' (1.2 x 3.7 m) 282 lbs (128 kg)	LPS-44ES 4' x 4' (1.2 x 1.2 m) 55 lbs (25 kg)
		LPS-45ES 4' x 5' (1.2 x 1.5 m) 60 lbs (27 kg)

Single Wall Aluminum Panel Accessories



LPS-SCA1

Static Collar with Pin

5" x 5" x 4" (13 x 13 x 10 cm)

2.25 lbs (1 kg)

Two are required with each static spreader



CW-6LD

6' Lifting Sling

0.375" x 6' (1 x 182 cm)

30 lbs (14 kg)

Light Duty – Four corner lifting of trench shield systems Capacity 6400 lbs



189A100

Pin with Keyring & Lynch Pin

ø .625" x 4.5" (ø 1.6 x 11.4 cm)



189A078

Pin with Keyring & Lynch Pin

ø .5" x 7.25" (ø 1.3 x 18.4 cm)



LPS-LL

Steel Lifting Handles

5" x 5" x 4" (13 x 13 x 10 cm)

4 lbs (2 kg)

Set of Two – Two normally used with each side panel for sling lifting



LPS-WHK

Wheel Assembly

16" x 18" x 20" (41 x 46 x 51 cm)

19 lbs - each (9 kg)

Set of Four – Allows in-ground shifting of trench shield to active work area

ASM-0009

Lynch Pin

ø 1.5"

Secure cross pins.

Keep a few extra on hand



ASM-0010

Key Ring



ST-4

Stacking Tubes with Pins

3.5" x 8" (with pin) 1.25 lbs - each (1 kg)

Set of Four – Used for securing shields at 4 corners for stacking to 12' max

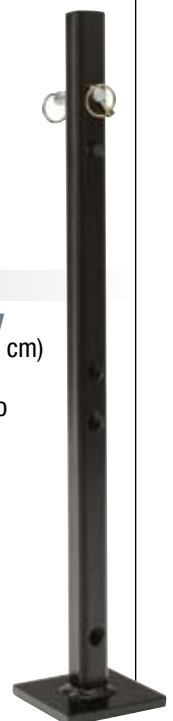
LPS-LK4

Adjustable Leg Assembly

5" x 5" x 34" (13 x 13 x 86 cm)

9 lbs - each (4 kg)

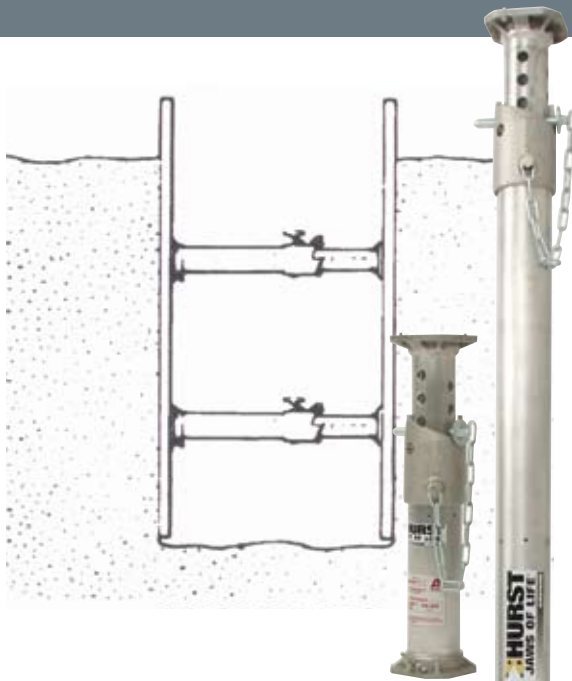
Set of Four – Provides up to 24" over utility clear area



Struts

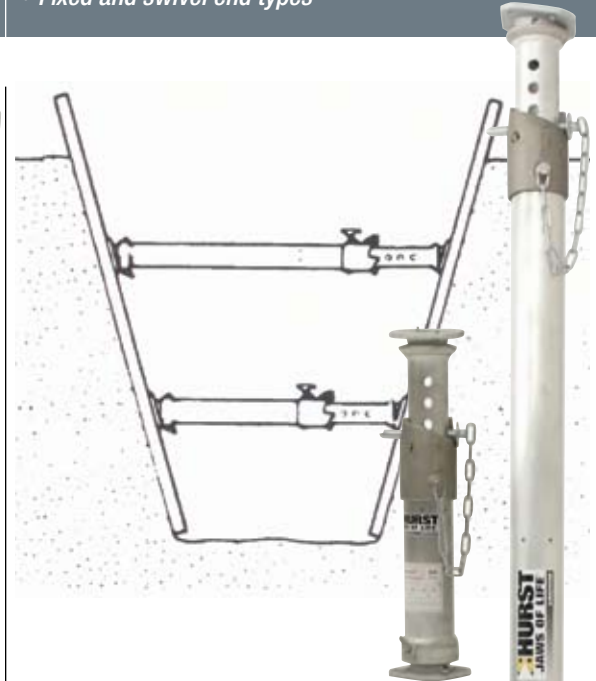
- Environmentally Safe – No Hydraulic Fluids
- Meet OSHA and Canadian Regulations
- Adapt to any trench design
- Available in 7 lengths with adjustment from 18” - 146”
- Operate with pressures to 350 PSI
- Provides thrust of up to 2,500 pounds
- Fixed and swivel end types

Simply activate with compressed air to exert pressure on the trench wall, Airshore Aluminum Trench Shield or approved wall shield (Finn Form), then set the locking pin and release the pressure. The strut is now a fixed mechanical unit maintaining pressure to the trench walls.



Airshore Pneumatic Standard Strut

AS-A (Shown)
Standard “A” 18” - 27” (46 - 69 cm) 12 lbs (5.5 kg)
AS-B
Standard “B” 23” - 36” (58 - 92 cm) 14 lbs (6.4 kg)
AS-C
Standard “C” 30” - 48” (76 - 122 cm) 17 lbs (7.7 kg)
AS-D
Standard “D” 42” - 66” (107 - 168 cm) 22 lbs (10 kg)
AS-E
Standard “E” 60” - 96” (152 - 244 cm) 30 lbs (13.6 kg)
AS-F
Standard “F” 90” - 120” (229 - 305 cm) 35 lbs (15.9 kg)
AS-G (Shown)
Standard “G” 114” - 144” (290 - 366 cm) 40 lbs (18.1 kg)



Airshore Pneumatic Swivel Strut

AS-SA (Shown)
Swivel “A” 21” - 29” (53 - 74 cm) 14 lbs (6.4 kg)
AS-SB
Swivel “B” 25” - 38” (66 - 97 cm) 16 lbs (7.3 kg)
AS-SC
Swivel “C” 33” - 50” (84 - 127 cm) 19 lbs (8.6 kg)
AS-SD
Swivel “D” 45” - 68” (114 - 173 cm) 24 lbs (10.9 kg)
AS-SE
Swivel “E” 63” - 98” (160 - 245 cm) 32 lbs (14.5 kg)
AS-SF
Swivel “F” 93” - 122” (236 - 310 cm) 37 lbs (16.8 kg)
AS-SG (Shown)
Swivel “G” 117” - 146” (297 - 371 cm) 42 lbs (19 kg)

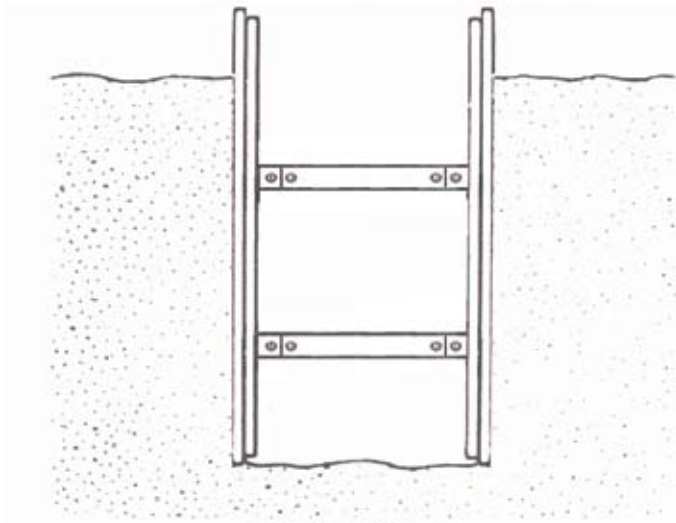
AS-E12
12” Industrial Extension 4.88” x 4.88” x 16.3” (12.3 x 12.3 x 41.4 cm) 7 lbs (3.2 kg)

AS-E24
24” Industrial Extension 4.88” x 4.88” x 28.3” (12.3 x 12.3 x 71.8 cm) 9.5 lbs (4.3 kg)

These extensions can only be used with the Standard Pneumatic Strut

Spreader

- *Lightweight and extremely durable*
- *Use with Airshore Trench Shields or Multi-Shore accessories*
- *Static spreaders available in 15 sizes from 12" - 96"*
- *Adjustable spreaders available in 5 sizes from 19" - 97"*
- *Meet OSHA and Canadian Regulations*



Static Spreader*

SS12 12" x 3" (30 x 8 cm) 2.7 lbs (1.2 kg)	SS60 60" x 3" (152 x 8 cm) 13.3 lbs (6 kg)
SS18 18" x 3" (46 x 8 cm) 4 lbs (1.8 kg)	SS66 66" x 3" (168 x 8 cm) 14.6 lbs (6.6 kg)
SS24 (Shown) 24" x 3" (61 x 8 cm) 5.3 lbs (2.4 kg)	SS72 72" x 3" (183 x 8 cm) 15.9 lbs (7.2 kg)
SS30 30" x 3" (76 x 8 cm) 6.6 lbs (3 kg)	SS78 78" x 3" (198 x 8 cm) 17.2 lbs (7.8 kg)
SS36 36" x 3" (91 x 8 cm) 8 lbs (3.6 kg)	SS84 84" x 3" (213 x 8 cm) 18.6 lbs (8.4 kg)
SS42 42" x 3" (107 x 8 cm) 9.3 lbs (4.2 kg)	SS90 90" x 3" (229 x 8 cm) 19.9 lbs (9 kg)
SS48 48" x 3" (122 x 8 cm) 10.6 lbs (4.8 kg)	SS96 96" x 3" (244 x 8 cm) 21.2 lbs (9.6 kg)
SS54 54" x 3" (137 x 8 cm) 11.9 lbs (5.4 kg)	

Adjustable Aluminum Spreader

AAS-13 (Shown) 19" - 31" (48-78.7 cm) 11 lbs (5 kg)
AAS-23 25" - 37" 63.5-94 cm 13 lbs (6 kg)
AAS-30 30" - 48" 76-122 cm 15 lbs (6.8 kg)
AAS-35 37" - 61" (94-155 cm) 18 lbs (13 kg)
AAS-58 (Shown) 61" - 97" (155-246 cm) 28 lbs (13 kg)

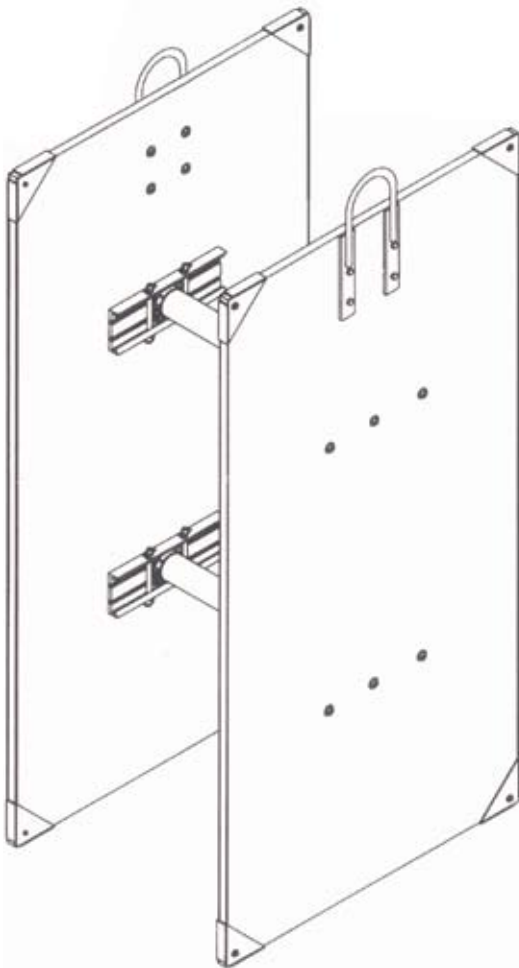
*Requires 2 Static Collars per Strut.

Multi-Shore

- Easy installation & removal while the operator is above ground when used with Airshore Pneumatic Struts
- Light Weight
- Engineering certified
- Meets OSHA and Canadian regulations
- Kits may be used with 6 – 8 Ft or 10 – 12 Ft Panels
- Handles may be used with overhead slings
- Components assembled in minutes

The complete Multi-Shore unit is lowered into the trench and expanded pneumatically to apply pressure to the walls while the operator remains above ground. Once the pressure is applied, the operator enters the trench to set the patented Airshore collar to mechanically lock the strut in place.

ASM-K8 Kit is designed for 6' or 8' Tall Systems* and ASM-K12 Kit for 10' or 12' Tall Systems.*



ASM-K8 ASM-K12

Quantity	Quantity	Part	Name
2	2	ASM002	Set consists of: 4 Steel Corners with Mounting Hardware (for Finn Form*)
1	1	ASM003	Set consists of: 2 Handles with Mounting Hardware
2	3	ART-RR18	Set consists of: 2 - 18" (0.5 m) Waler with Mounting Hardware (4" - 18" Rails with Pins)

52 lbs (24 kg) 66 lbs (30 kg) Total Kit Weight

* System Requires Finn Form and 2 Struts



Steel Corners



Handles



18" Waler

Multi-Shore Accessories



LPS-0127B

Quick Release Pin

Ø .5" x 6" -Grip (Ø 1.3 x 15.2 cm)
Used to secure struts to the 18" waler



ASM003

Handles

1" x 10" x 18" (2.5 x 25 x 56 cm)
9 lbs (4 kg)

Set of Two with Mounting Hardware
– Placing of Finn Form shoring is made easier with this accessory



ASM002

Steel Corners

1.5" x 6" x 6" (4 x 15 x 15 cm)
2 lbs (1 kg)

Set of Four with Mounting Hardware
– Steel corners protect the shoring corners for longer life



189A078

Pin with Keyring & Lynch Pin

Ø .5" x 7.25" (Ø 1.3 x 18.4 cm)

ASM-0009

Lynch Pin

Ø 1.5"
Secure cross pins.
Keep a few extra on hand



ART-RR18

18" Waler

1.5" x 5.75" x 18" (4 x 5 x 46 cm)
6 lbs (3 kg)

Set of Two with Mounting Hardware
– The perfect foothold for Airshore struts and spreaders



AIR-DVR

Dump Valve

6.75" x 4" x 1.5"
(15.24 x 10.2 x 3.8 cm)
1.25 lbs (0.6 kg)

A safe, convenient and durable valve for Airshore pneumatic systems

ASM-0010

Key Ring



ASM007

3 - 4.5' Lifting Sling (shown right)

36" - 54" (91 - 137 cm)
25 lbs (11 kg)

ASM008

5 - 8' Lifting Sling

60" - 96" (152 - 244 cm)
43 lbs (20 kg)

Used for two point lifting of Multi-Shore trench shoring systems.
Lifting capacity 3,500 lbs



Air Supply



AIR-33RA1

Single Air Supply

For Multi-Shore use with 1 compressed air bottle
 Consists of: AIR-DVR, PAI-0002RA1, PAI-0007B, PAI-0009BK
 10 lbs (4.5 kg)



AIR-33RA2

Dual Air Supply

For Multi-Shore use with 2 compressed air bottles
 Consists of:
 AIR-DVR, PAI-0002RA2, PAI-0007B, PAI-0009BK
 10 lbs (4.5 kg)



AIR-34

Hose Assembly

Consists of: AIR-DVR, PAI-0009BK, PAI-0007B
 7 lbs (3.2 kg)



AIR-ASM3

3-Way Manifold

11' x 0.5" (3.35m x 1.27 cm)
 7 lbs (3.2 kg)



AIR-ASM2

2-Way Manifold

8' x 0.5" (2.44 m x 1.27 cm)
 4 lbs (1.8 kg)
 For Multi-Shore



PAI-0007B-Blue (shown)

PAI-0007R-Red

15' Whip Hose

15' x 0.375"
 (4.6 m x 0.95 cm)
 2.5 lbs (1.1 kg)



PAI-0009BK-Black (shown)

PAI-0009R-Red

35' Supply Hose

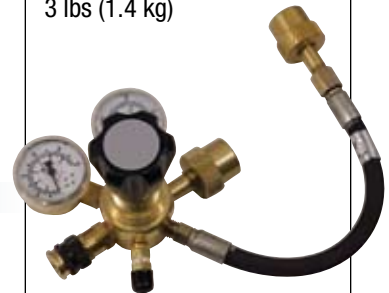
35' x 0.375"
 (10.7 m x 0.95 cm)
 5.5 lbs (2.5 kg)



PAI-0002RA1

Low Pressure Regulator

For use with Airshore Struts
 3000 PSI / 204 BAR
 6.5" x 5" x 4"
 (16.5 x 12.7 x 10.2 cm)
 3 lbs (1.4 kg)



PAI-0002RA2

Dual Low Pressure Regulator

For Airshore Struts; use with
 2 compressed air bottles
 3000 PSI / 204 BAR
 5.5" x 14.5" x 19.5"
 (14 x 37 x 49.5 cm)
 3 lbs (1.4 kg)



266A151

Breathing Air Adapter

2" x 1" x 1"
 (5.1 x 2.5 x 2.5 cm)
 0.25 lbs (0.11 kg)

Airshore® Rescue AA Strut

HURST
JAWS OF LIFE®
AIRSHORE

A Unit of **EX** Corporation

Innovative Quality Tools for All Your Rescue Needs

OUR SMALLEST RESCUE STRUT SUPPORTS LOADS EXCEEDING 30,000 LBS.

ART-AA

The AA rescue strut from Hurst is our smallest strut-with a profile starting at 13" and a 5" stroke. But, don't let the size deceive you - this power house strut supports loads exceeding 30,000 lbs. The AA is ideal for RIT collapse operations when you need to go vertical. It also performs optimally when positioned horizontally in small trench spaces and offers superior strength, fast placement and versatility.



ART-AA
(13"-18" 9 lbs)

JAWS OF LIFE®

HURST
JAWS OF LIFE®

©2010 Hurst Jaws of Life® • 711 N. Post Road • Shelby, NC 28150

www.JAWSOFLIFE.com

800.537.2659

Airshore® Rescue Blocks & Rail Adapter



A Unit of  Corporation

Innovative Quality Tools for All Your Rescue Needs

NEW TO OUR AIRSHORE® PRODUCT LINE



45/60 PIVOT BLOCK/Raker Rail Adaptor

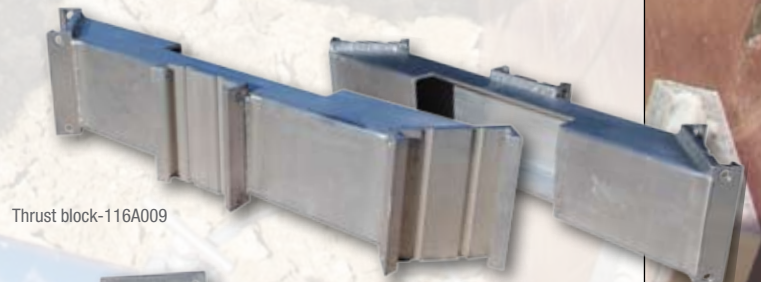
The new 45/60 Pivot combines both Raker Angles in one unit, eliminating the need for two different pivot blocks. This pivot was specially designed to insert anywhere into our Light Duty RakerRail or our Heavy Duty Whaler Rail, which means you don't have to slide the pivot from either end. The unique construction includes a special heat treated High Strength pin.



45/60 Pivot Block/Raker Rail adapter-225A003

THRUST BLOCK

Lightweight technology has come to a perfect 45 degrees with Hurst's Thrust Block. The Trench Technician is capable of capturing head wall panels with perfect shore placement, securing the optimal angle every time. The high strength construction includes the LD Rail Mount and a special 6061-T6 aircraft grade aluminum channel block.



Thrust block-116A009

CORNER BLOCK

With Hurst's corner block, the perfect L-Trench angles can be captured with 6" x 6" or larger Whaler Timbers, securing a 90 degree angle with perfect 45 degree strut placement. Our corner block works flawlessly with our new thrust block.



Corner Block -116A008

JAWS OF LIFE



©2010 Hurst Jaws of Life® • 711 N. Post Road • Shelby, NC 28150

www.JAWSOFLIFE.com

800.537.2659

HURST

JAWS OF LIFE®



Hurst Jaws of Life®
711 N. Post Road
Shelby, NC 28150 USA
www.jawsoflife.com