



# B46 BLUELIFT

## The BLUELIFT Series

Back in blue alongside the ReachMaster brand! Meet our new line of aerial lifts from the well-renowned Italian manufacturer Bluelift s.r.l., now exclusively distributed in the US, Canada and Mexico by SKAKO Lift, Inc. Innovation, quality, superior design and above all safety are trademarks of Bluelift s.r.l.. With working heights from 39 to 72 feet, in and outdoor use and access through a single or double door, the BLUELIFT series appeals to a broad range of applications: Rental industry (residential as well as commercial), window cleaners, building maintenance, tree care industry and HVAC operators to mention a few.

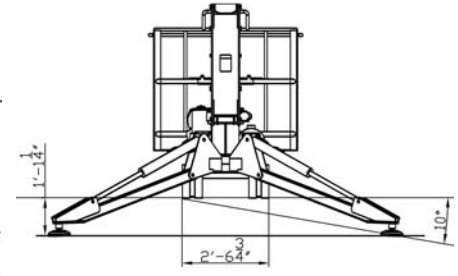
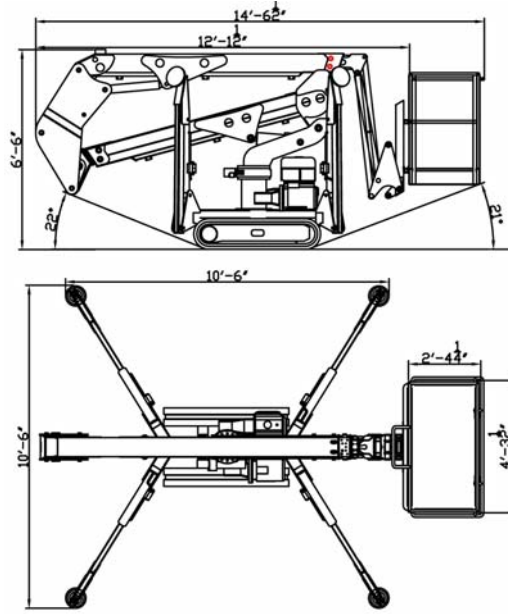
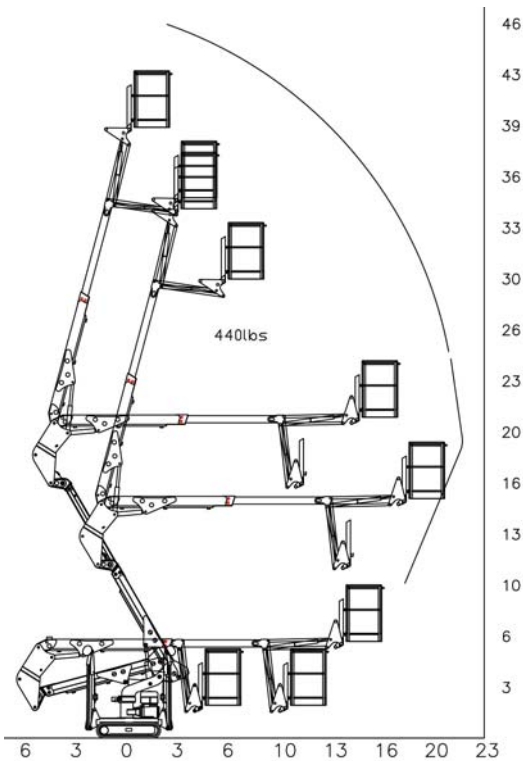
- Available in 4 models from 39ft - 72ft
- Pass through a single or double door opening
- Automatic outrigger setting
- Full workheight with 440lbs in the basket
- Remote and wireless control
- 110V to the basket
- Set up on uneven surfaces
- Detachable basket
- FMS (Function Memory System)
- Automatic turret center stop

## Model

## B46

Working height	46ft
Basket height	40ft
Max outreach	21ft
Basket load	440lbs
Basket dims	4ft3½in x 2ft4¼in
Basket rotation (opt)	+/-90°
Turret rotation	360°
Height	6ft6in
Length (w/o basket)	12ft1½in
Length (w/ basket)	14ft6½in
Width (w/o basket)	2ft6¾in
Footprint	10ft6in
Weight (approx)	4,070lbs
Max pressure, tracks	6.7psi
Max pressure, footplate	65.3psi
Track size (per track)	44in x 6½in
Foot pad size (per pad)	48½sq in
110V drive motor	Standard
Honda gasoline engine	Standard
Hatz diesel engine	Option

We reserve the right to alterations



B46  
**BLUELIFT**

**Standard Equipment**

- Computer controlled (can-bus)
- Proportional control of all functions
- Self propelled
- 110V drive motor
- Honda iGX440 15HP engine
- 360° non cont. turret rotation
- Manual pump for emergency lowering
- Width of only 2ft7in
- 2 person basket
- Full work height with 440lbs in basket
- Space for tools etc in basket
- 110V to the basket
- Wireless control
- FMS (Function Memory Control)
- Automatic turret center stop

**Optional Equipment**

- Automatic stability & outreach control
- 180° (+/-90°) basket rotation
- Non marking tracks
- Hatz diesel engine
- Adjustable tracks

**Additional Specifications**

Boom angle	0°/ +75°
Oil tank capacity	8gal
Max windspeed	28mph
Operating speed	0.9mph
Travel speed	0.9mph
Drive gradability	15°/28%
Set-up gradability	10°/18%



**SKAKO**  
LIFT

Skako Lift, Inc  
1416D Stonehollow Dr.  
Kingwood, TX 77339  
TF: 1-866-358-7088  
Tel: 281-358-7088  
Fax: 281-359-3500  
www.skakoliftusa.com