

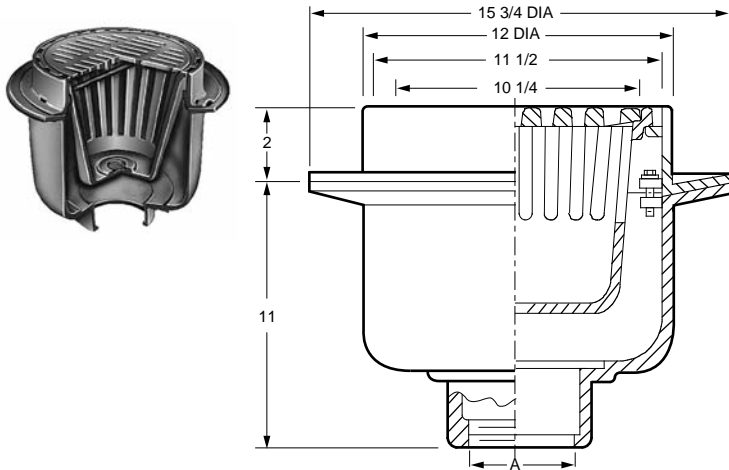


FLOOR DRAINS

FIG. 2240 DEEP BODY MEDIUM DUTY FLOOR DRAIN WITH 12" ROUND TOP AND "SAFE SET" SEDIMENT BUCKET
FIG. 2241 DEEP BODY MEDIUM DUTY FLOOR DRAIN WITH 12" ROUND GRATE AND SOLID FREE STANDING SEDIMENT BUCKET



FUNCTION: For general use where water contains solids and debris that must be intercepted. Large deep body and bucket are adaptable to areas where heavy flow and considerable debris are anticipated. "Safe-Set" design (Fig. 2240) insures bucket replacement after cleaning since top grate cannot be inserted unless bucket is in place.



A OUTLET SIZE	TOP SIZE	FREE AREA SQ IN	†DUCO CI	DUCO CI PB TOP	DUCO CI NB TOP	APPROX. WEIGHT LBS
02, 03, 04"	12"	25.5	1,085.00	1,480.00	1,542.00	81
05, 06"	12"	25.5	1,085.00	1,480.00	1,542.00	83

REGULARLY FURNISHED: Duco Cast Iron Body and Flashing Collar with Cast Iron Grate and Slotted Sediment Bucket.

OUTLET VARIATIONS (Specify type of outlet and pipe size in inches.)

Outlet Type	Outlet Designation Outlet Type/Pipe Size	ADD
Inside Caulk	C02, C03, C04, C05, C06	N/C
Threaded	T02, T03, T04, T05, T06	47.00
No-Hub	Y02, Y03, Y04	N/C
	Y05, Y06	See Fig. 2646Y

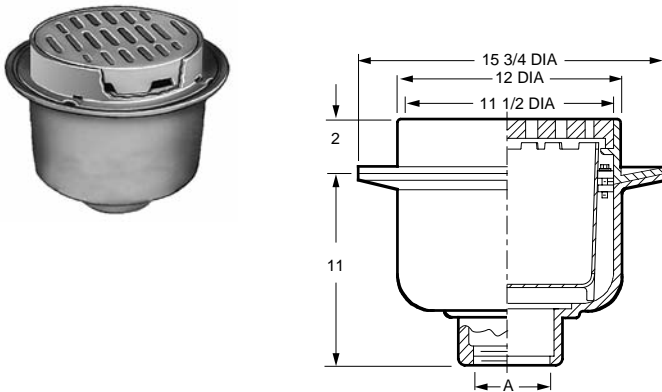
OPTIONS:

	ADD
-B Sol Free Stdg Bucket (2241)	N/C
-BS Mesh Lined Bucket	253.00
-D Dome Grate, CI	84.00
-DNB Dome Grate add to CI	753.00
-DPB Dome Grate add to CI	647.00
-FBSCI Flat Bottom Strainer, CI	58.00
-G Galvanized CI	737.00
-H Hinged Grate*	156.00
-M Ductile Iron Grate (2241)	161.00
-P Trap Primer Conn	99.00
-S Square Top, CI	208.00
-SC Solid Scoriated Cover	354.00
-SNB Square Top, add to CI	753.00
-SPB Square Top, add to CI	654.00
-U Vandal Proof Grate	89.00

*Hinged grate not available in Safe-Set design. Full Grate is provided with a suspended bucket. (Specify Fig. 2241)

FIG. 2242 DEEP BODY HEAVY DUTY FLOOR DRAIN WITH 12" TOP W/TRACTOR GRATE AND SOLID FREE STANDING SEDIMENT BUCKET

FUNCTION: Used in heavy traffic areas where debris is anticipated and must be intercepted. Large deep body and bucket are adaptable to areas where heavy flow and considerable debris are expected.



A OUTLET SIZE	TOP SIZE	FREE AREA SQ IN	†DUCO CI	DUCO CI PB TOP	DUCO CI NB TOP	APPROX. WEIGHT LBS
02, 03, 04"	12"	29	1,085.00	1,480.00	1,542.00	76
05, 06"	12"	29	1,085.00	1,480.00	1,542.00	78

REGULARLY FURNISHED: Duco Cast Iron Body and Flashing Collar with Cast Iron Grate and Solid Free Standing Sediment Bucket.

OUTLET VARIATIONS (Specify type of outlet and pipe size in inches.)

Outlet Type	Outlet Designation Outlet Type/Pipe Size	ADD
Inside Caulk	C02, C03, C04, C05, C06	N/C
Threaded	T02, T03, T04, T05, T06	47.00
No-Hub	Y02, Y03, Y04	N/C
	Y05, Y06	See Fig. 2646Y

OPTIONS:

	ADD
-DG Deflector Grate	207.00
-FBSCI Flat Bottom Strainer, CI	58.00
-FP Seepage Holes in Bucket	82.00
-G Galvanized CI	737.00
-M Ductile Iron Grate	161.00
-P Trap Primer Conn	99.00
-S Square Top, CI	208.00
-SC Solid Scoriated Cover	354.00
-SNB Square Top, add to CI	753.00
-SPB Square Top, add to CI	654.00
-U Vandal Proof Grate	89.00

