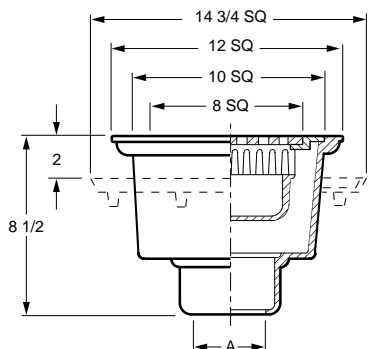




# FLOOR DRAINS

## FIG. 2631 LIGHT DUTY HOPPER DRAIN WITH SEDIMENT BUCKET

**FUNCTION:** Hopper type drain for use in areas not subject to traffic.



A OUTLET SIZE	TOP SIZE	FREE AREA SQ IN	†DUCO CI	DUCO CI PB TOP	DUCO CI NB TOP	APPROX. WEIGHT LBS
02, 03, 04"	12" SQ	23	630.00	1,049.00	1,095.00	30

**REGULARLY FURNISHED:** Duco Cast Iron Body with Sediment Bucket.

**OUTLET VARIATIONS** (Specify type of outlet and pipe size in inches.)

Outlet Type	Outlet Designation	Outlet Type/Pipe Size	ADD
Inside Caulk	C02, C03, C04		N/C
No-Hub	Y02, Y03, Y04		See Fig. 2646Y
Threaded	T02, T03, T04		47.00

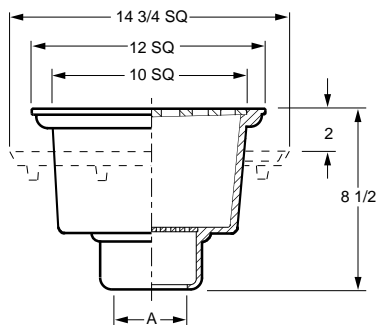
**OPTIONS:**

Option	Description	ADD
-BM	Ductile Iron Bucket	114.00
-F	Flange, Cast Iron	223.00
-FC	Flange w/Flashing Clamp	353.00
-G	Galvanized CI	457.00
-P	Trap Primer Connection	117.00

FLOOR DRAINS

## FIG. 2632 LIGHT DUTY HOPPER DRAIN WITH FLAT BOTTOM STRAINER AND GRATE

**FUNCTION:** Hopper type drain for use in areas not subject to traffic.



A OUTLET SIZE	TOP SIZE	FREE AREA SQ IN	†DUCO CI	DUCO CI PB TOP	DUCO CI NB TOP	APPROX. WEIGHT LBS
02, 03, 04"	12" SQ	28	604.00	1,194.00	1,306.00	30

**REGULARLY FURNISHED:** Duco Cast Iron Body with Flat Bottom Strainer and Grate.

**OUTLET VARIATIONS** (Specify type of outlet and pipe size in inches.)

Outlet Type	Outlet Designation	Outlet Type/Pipe Size	ADD
Inside Caulk	C02, C03, C04		N/C
No-Hub	Y02, Y03, Y04		See Fig. 2646Y
Threaded	T02, T03, T04		47.00

**OPTIONS:**

Option	Description	ADD
-BT	Bell Trap Assembly	107.00
-DBS	Alum Dome Bottom Str	71.00
-F	Flange, Cast Iron	223.00
-FC	Flange w/Flashing Clamp	353.00
-G	Galvanized CI	457.00
-M	Ductile Iron Grate	207.00
-P	Trap Primer Connection	117.00
-U	Vandal Proof Screws	89.00
-12	Half Grate	74.00
-13	Three Quarter Grate	74.00

