

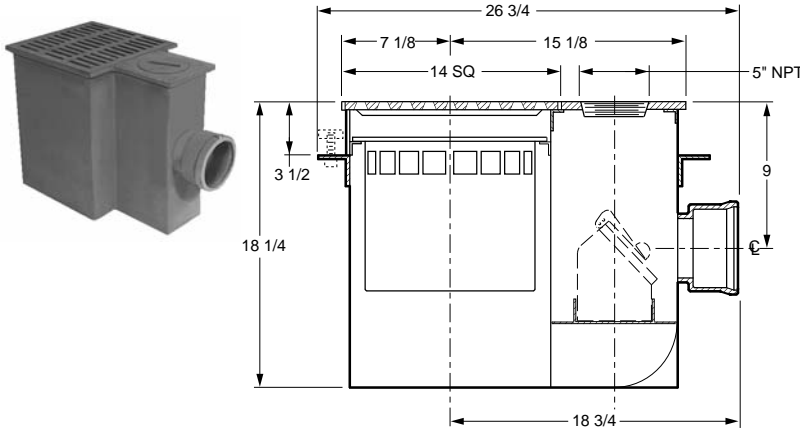


FLOOR DRAINS

FIG. 2650 GARAGE AND PLANTING AREA DRAIN WITH EXTRA LARGE BUCKET



FUNCTION: Heavy duty floor drain with an integral trap incorporates a large sediment bucket to intercept chips and debris. Floor level cleanout provides access to sewer line and backwater valve. Used in garages and industrial areas where compact trap drain provides roughing advantages.



OUTLET VARIATIONS (Specify type of outlet and pipe size in inches.)

Outlet Type	Outlet Designation	Outlet Type/Pipe Size	ADD
Inside Caulk	C03, C04		N/C
No-Hub	Y03, Y04		See Fig. 2646Y

OPTIONS:	ADD
-F Flashing Flange	N/C
-FC Flange and Flashing Clamp	325.00
-U Vandal Proof Screws	145.00
-V Backwater Valve	591.00

A OUTLET SIZE	TOP SIZE	FREE AREA SQ IN	†GALV STL DI TOP	GALV STL PB TOP	GALV STL NB TOP	APPROX. WEIGHT LBS
03, 04"	22 x 14"	63	9,709.00	11,888.00	12,133.00	30

REGULARLY FURNISHED: Galvanized Coated
Fabricated Steel Body with Heavy Duty Ductile Iron Grate,
Suspended Bucket and Bronze Cleanout Plug.

FLOOR DRAINS

FIG. 2651 ECCENTRIC REDUCER, FIG. 2652 FACE REDUCER BUSHING

FUNCTION: Fig. 2651 is used with side outlet drains to reduce outlet one pipe size. Fig. 2652 is used to reduce threaded connection.

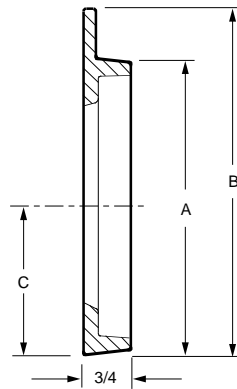


Fig. 2651

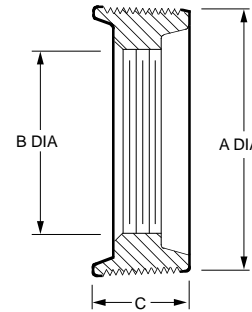


Fig. 2652

FIG. 2651 SIZE	A DIA	B DIA	C	†DUCO CI	GALV CI (-G)	APPROX. WEIGHT LBS
03 x 02"	3"	4"	1 1/2"	28.00	43.00	1
04 x 03"	4 1/4"	5"	2"	53.00	68.00	2
05 x 04"	5 1/4"	6"	2 3/4"	61.00	76.00	3
06 x 05"	6 1/4"	7"	3"	87.00	102.00	6

REGULARLY FURNISHED: Duco Cast Iron.

FIG. 2652 SIZE	A DIA	B DIA	C	†DUCO CI	GALV CI (-G)	APPROX. WEIGHT LBS
02 x 0150"	2"	1 1/2"	3/4"	50.00	65.00	1
03 x 02"	3"	2"	1 1/4"	59.00	74.00	2
04 x 02"	4"	2"	1 5/16"	64.00	79.00	3
04 x 03"	4"	3"	1 5/16"	64.00	79.00	6
05 x 04"	5"	4"	1 5/16"	84.00	99.00	7
06 x 04"	6"	4"	1 9/16"	84.00	99.00	8

