



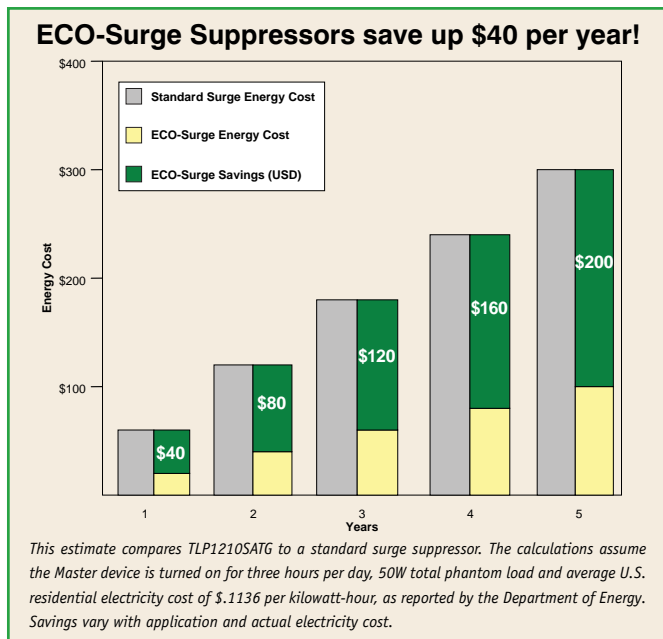
ECO-Surge Energy-Saving Surge Suppressors



- Green Outlet Technology
- Up to 3,600 Joules
- Protection from Surges, Line Noise & Phantom Loads
- Data Line Surge Protection Available (Tel/Network or Tel/Network + Coaxial)

SAVE ENERGY & LOWER UTILITY BILLS

Green Outlet technology allows ECO-Surge Suppressors to reduce your electric bill by up to \$40 per year.



ELIMINATE PHANTOM LOADS

Every AC adapter and glowing LED represents a potential "phantom load"—electricity wasted by an idle device, even when it appears to be turned off. Green Outlet technology eliminates phantom loads by cutting power to energy-saving outlets when connected devices are idle. Other outlets stay on to support devices that operate continuously, such as routers.

PROTECT COMPUTERS & AUDIO/VIDEO EQUIPMENT

Designed for home and office applications, ECO-Surge Suppressors protect your computers and electronics from damage and interference caused by power problems, including surges and line noise. Models TLP1210SATG and TLP808NETG include surge-blocking RJ45 jacks to protect equipment connected to phone or Ethernet lines, including telephones, fax machines, modems, network cards and routers. Model TLP1210SATG also includes surge-blocking coaxial "F" connectors to protect HDTVs, cable boxes, satellite systems, TV tuners and other audio/video equipment.

PROTECT THE ENVIRONMENT

Over a five-year period, a single ECO-Surge Suppressor can shrink your carbon footprint 2,568 pounds and conserve 1,916 kilowatt-hours of electricity. That's enough energy to power a compact fluorescent light bulb for 16 years! ECO-Surge Suppressors are also RoHS compliant and use recyclable, CFC-free packaging designed to reduce waste.

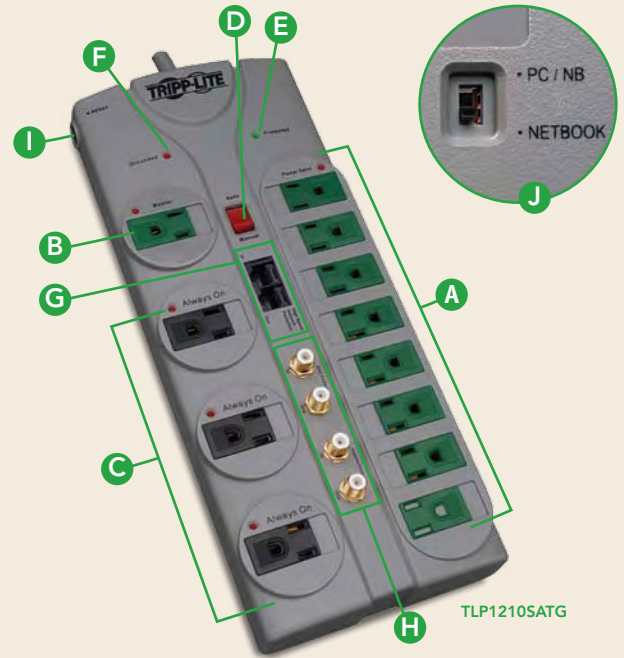
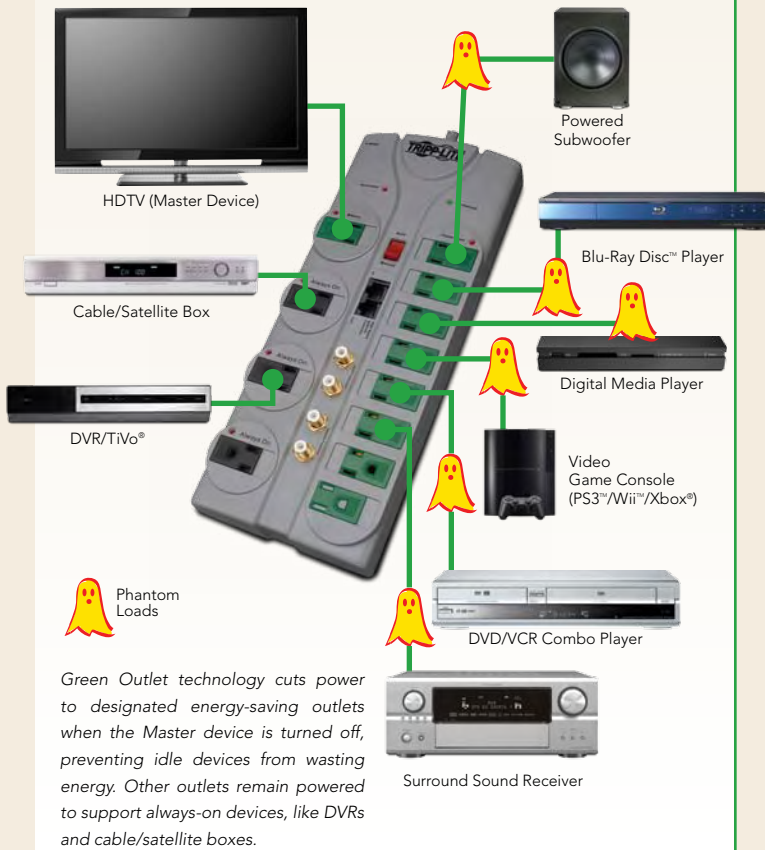


FEATURE FOCUS

SAVE ENERGY THREE DIFFERENT WAYS

You can choose the Green Outlet technology that works best for you, or mix and match for different applications.

- Models TLP1210SATG and TLP808NETG automatically switch energy-saving outlets off or on when you switch the device connected to the "Master" outlet off or on. The wattage switch ensures reliable operation with both low- and high-wattage devices.
- Models TLP78TUSBG and TLP74TG allow you to set up to 20 hour/minute/day timer settings to automatically switch energy-saving outlets off or on in two separate banks.
- Model TLP66RCG allows you to switch energy-saving outlets off or on through walls, doors and furniture with a convenient key chain remote control.



A Energy-Saving Outlets

Green Outlet technology eliminates phantom loads by automatically cutting power to the energy-saving outlets when the Master device is turned off.

B Master Outlet

Detects whether the Master device is on or off.

C Always-On Outlets

Remain powered whether the Master device is on or off.

D Auto/Manual Switch

Switches between energy-saving mode (Auto) and standard mode (Manual).

E Protected LED

Indicates whether surge protection is functioning.

F Grounded LED

Indicates whether the wall outlet is grounded.

G RJ45 Tel/Network Protection

H Coaxial Protection

I Circuit Breaker

J Wattage Switch (bottom)



UP TO \$250,000
ULTIMATE
Lifetime Insurance

SPECIFICATIONS

Model	Surge Protection Rating ⁽¹⁾	Energy-Saving Outlet Controller	Outlets (5-15R)	Input Cord Length	Connected Equipment Insurance ⁽²⁾	Other Features
ECO-Surge Energy-Saving Surge Suppressors						
TLP66RCG	2,100 Joules	RF Remote Control	6 (4 Remote-Controlled, 2 Always-On)	6 ft.	\$100,000	Key Chain Remote
TLP74TG	1,400 Joules	Dual Timers	7 Timer-Controlled (4 in Bank One, 3 in Bank Two)	4 ft.	\$75,000	—
TLP78TUSBG	2,100 Joules	Dual Timers	7 Timer-Controlled (4 in Bank One, 3 in Bank Two)	8 ft.	\$150,000	2 USB Charging Ports
TLP808NETG	2,160 Joules	Master Outlet	8 (5 Energy-Saving, 2 Always-On, 1 Master)	8 ft.	\$150,000	Tel/Network Protection
TLP1210SATG	3,600 Joules	Master Outlet	12 (8 Energy-Saving, 3 Always-On, 1 Master)	10 ft.	\$250,000	Tel/Network + Coaxial (2 Lines) Protection

Nominal AC input/output for all models is 120V, 60Hz. (1) The surge protection rating indicates how much surge energy a surge suppressor can absorb. More joules mean more protection. (2) Valid in the U.S. and Canada.