

Large Capacity Vertical Cable Duct Systems with Doors



EIA/TIA Compliant



Spec. #
96-01077
for full
product
info.
A&E



VCD-10-51-DC



mounts next to or
between racks to
manage cabling

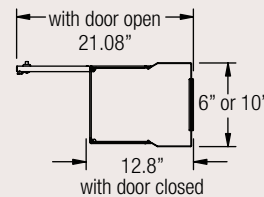
The VCD Series ducts feature high capacity 6" or 10" widths to accommodate large cabling quantities.

VCD Series managers mount on all MK, RL, RLA and R4 Series open frame rack systems.

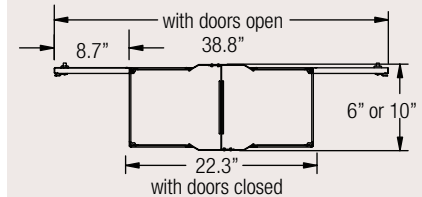
- Helps protect cable bend radius and organize pathways for all data cables, patch cords and power cords between racks
- Available in single and dual (front and rear channel) duct versions
- Includes removable reversible doors

10" Wide	6" Wide	Description
VCD-10-51-DC	VCD-6-51-DC	8 ft. (51 rackspace) dual cable duct system
VCD-10-51-SC	VCD-6-51-SC	8 ft. (51 rackspace) single cable duct system
VCD-10-45-DC	VCD-6-45-DC	7 ft. (45 rackspace) dual cable duct system
VCD-10-45-SC	VCD-6-45-SC	7 ft. (45 rackspace) single cable duct system
-	VCD-6-38-DC	6 ft. (38 rackspace) dual cable duct system
-	VCD-6-38-SC	6 ft. (38 rackspace) single cable duct system

Dimensions

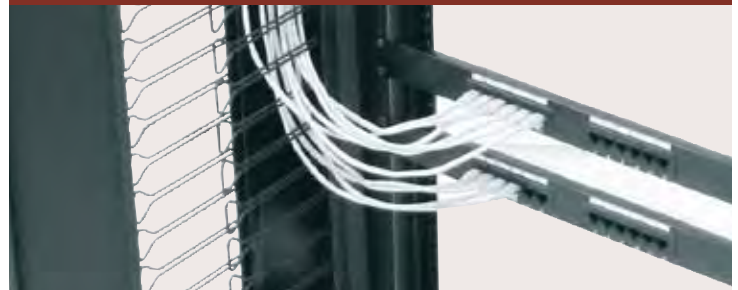


Single Duct



Dual Duct

Sturdy Metal Fingers



design provides support with generous capacity



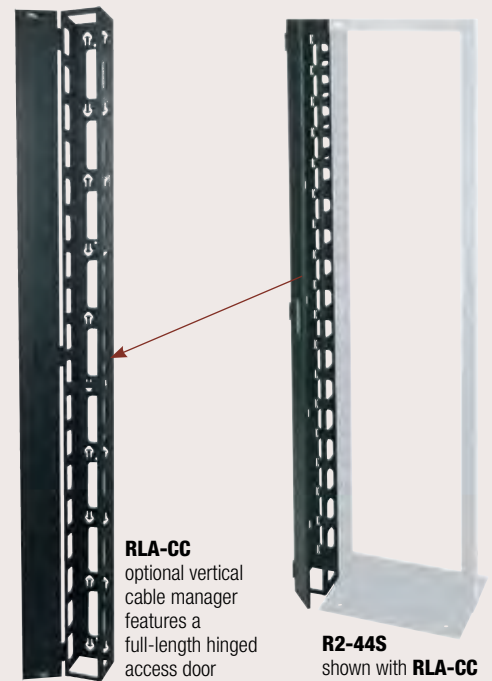
Economical Metal Vertical Cable Ducts

Vertical Cable Duct with Hinged Door

RLA-CC Series managers mount on all MK, R2, RL, RLA and R4 Series 45 space open frame rack systems, while providing abundant cable pass-throughs and cable lacing points. Order 2 (two) - single ducts to make an economical dual channel organizer. The solid hinged front door with a 3-point magnetic latch can be installed to open in either direction

Part #	Description
RLA-CC	7 ft. (45 space) duct with hinged cover
Order 2 single ducts to make an economical dual channel organizer	

Dimensions	
<p>with door open 11.4" 5.1" with door closed 6.1"</p>	<p>with doors open 22.9" 5.1" with doors closed 12.2"</p>
RLA-CC	2 RLA-CC's mounted back to back



Duct System and Lift-Off Covers

CK Series managers mount on all MK, RL, RLA and R4 Series open frame rack systems. Optional split lift-off covers fit on front and rear of both center and end unit styles. Built with dual channel design to handle extra large cable bundles while providing simple distribution provisions in the front and rear.

Part #	Description
CK-45	45 rackspace center organizer
CK-45E	45 rackspace end organizer
CK-45C	45 rackspace organizer cover - 2 pieces

Dimensions
<p>9" 6"</p>

ALL VERTICAL CABLE MANAGERS REDESIGNED TO WORK ON ALL 2-POST & 4-POST RACKS (RL, RLA, R2, R4, MK SERIES)



Vertical Cable Chases Ideal for Rack Enclosures

Cable chases provide ample space for the safe and unobtrusive routing of cables between racks. Each three-piece system includes a beveled-corner front vertical channel, a square-corner rear vertical channel, and a solid top cover. Standard 4" wide chases. Custom size and width chases are also available - please call for details. Finished in a durable black powder coat.

Part #	Description	Fits
CC-40-267	70" (40 Space) cable chase	WRK-40-27, MRK-4026
CC-40-312	70" (40 Space) cable chase	WRK-40-32, MRK-4031
CC-44-36	77" (44 Space) cable chase	MRK-4436, DRK19-44-36, VRK-44-36H
CC-44-312	77" (44 Space) cable chase	WRK-44-32, MRK-4431, VRK-44-31H, DRKXX-44-31
CC-44-267	77" (44 Space) cable chase	WRK-44-27, MRK-4426
CC-44-423	77" (44 Space) cable chase	MRK-4442, DRKXX-44-42

BGR and EGR options are shown on rack series pgs.

