


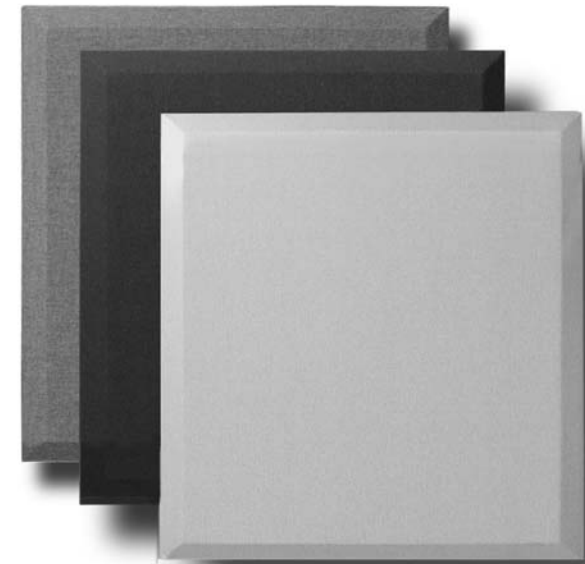
# BROADWAY™ CONTROL CUBES™

Control Cubes™ present an attractive, easy to install acoustic treatment used where you want to control primary reflections, eliminate flutter echo and reduce standing waves. The panels are typically spaced in an array leaving some reflective space to avoid completely deadening the room. This helps control acoustic problems while leaving a sense of air or space in the room.

The Control Cube's square design is particularly well suited for large wall surfaces needing treatment and where you would like to create distinctive architecturally pleasing patterns. Broadway Control Cubes come in a choice of 2 thicknesses and 3 colors: black, beige and gray and may be ordered with or without a beveled edge.

**SPECIFICATIONS:**

<b>DIMENSIONS</b>	24" x 24" (610mm x 610mm)
<b>PANEL DEPTH</b>	1" (25mm), 2" (51mm)
<b>CORE MATERIAL DENSITY</b>	Formed, semirigid inorganic glass fibers, 6.0 lbs pcf (96 kg/m <sup>3</sup> )
<b>FABRIC FACING</b>	Acoustically transparent polyester
<b>BACKING</b>	Sealed with acoustically transparent micro-mesh
<b>EDGE TREATMENT</b>	Sealed and hardened with resin
<b>RECYCLED CONTENT</b>	Up to 40%

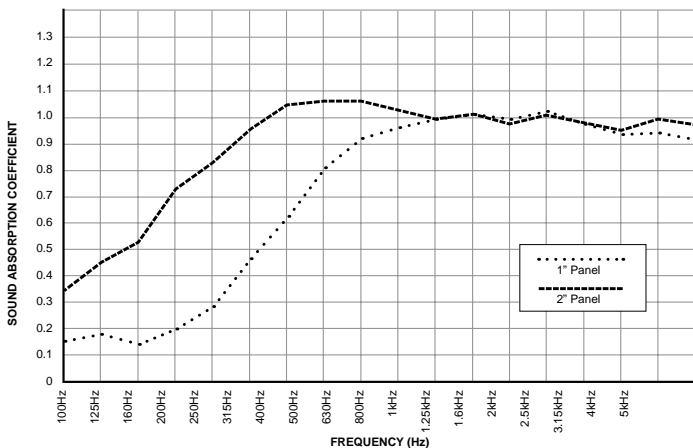
24" x 24"  
(610mm x 610mm)

**ABSORPTION CHARACTERISTICS:\***

Sound absorption coefficient data

PANEL DEPTH	125Hz	250Hz	500Hz	1kHz	2kHz	4kHz	NRC
1" Depth	0.17	0.28	0.81	1.00	1.02	0.95	0.80
2" Depth	0.45	0.83	1.07	1.00	1.01	1.00	1.00

\* Testing performed by Riverbank Acoustical Laboratories. The test method conformed explicitly with the requirements of the ASTM Standard Test Method for Sound Absorption and Sound Absorption Coefficients by the Reverberation Room Method: ASTM C 423-02a and E795-05.

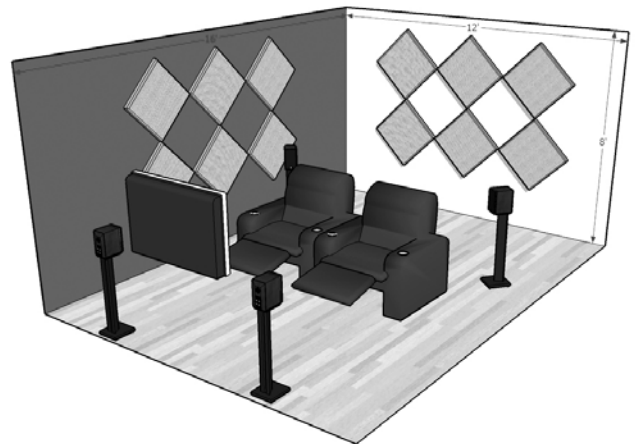


**FIRE & BURN PERFORMANCE:\*\***

TEST	CLASS	FLAME SPREAD	SMOKE DENSITY
ASTM E 84-05	1 OR A	15 FSI	155 SD
CAN/UL-S102	1 OR A	15 FSC1	155 SD

\*\* This method, designated as ASTM E 84-05, "Standard Method of Test for Surface Burning Characteristics of Building Materials", is used to measure and describe the response of materials, products, or assemblies to heat and flame under controlled conditions, but does not by itself incorporate all factors required for fire-hazard or fire-risk assessment of the materials, products, or assemblies under actual fire condition.

**APPLICATION:**



**PRODUCT RANGE:**

ORDER NO.	COLOR	DEPTH	EDGE	COVERAGE	BOX QTY.
F101-2424-00	Black	1" (25mm)	Square	48 sq/ft (4.46 sq/m)	12
F101-2424-03	Beige				
F101-2424-08	Grey				
F102-2424-00	Black	2" (51mm)	Square	48 sq/ft (4.46 sq/m)	12
F102-2424-03	Beige				
F102-2424-08	Grey				
F122-2424-00	Black	2" (51mm)	Beveled	48 sq/ft (4.46 sq/m)	12
F122-2424-03	Beige				
F122-2424-08	Grey				