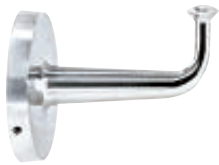
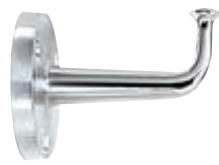


Hooks/Shelves/Custodial Accessories



B-2116



B-211

⚡B-2116 HEAVY-DUTY CLOTHES HOOK WITH CONCEALED MOUNTING

Locks to wall plate with three stainless steel setscrews for theft-resistant mounting. Hook and flange are one-piece brass casting with satin nickel-plated finish to match stainless steel. Withstands 300 lbs (136 kg) downward pull. Flange diameter: 2 3/4" (70mm). Unit projects 3 1/16" (85mm).

⚡B-211 Similar to B-2116, but with three exposed countersunk mounting screw holes.



B-544 Cubicle Collection TOILET BRUSH HOLDER

NEW



Heavy-duty type 304 stainless steel, satin finish. Vandal-resistant wall mounting bracket. Stainless steel handle with replaceable nylon brush head. Water reservoir included. Overall height is 15 7/8" (405 mm). Unit projects 4 1/16" (105mm).

See page 29 for the complete Cubicle Collection.



⚡B-682 HAT AND COAT HOOK

Bright-polished stainless steel. Flange is 2" x 2" (50 x 50mm). Hook 1" W, 6 1/2" H (25 x 165mm); projects 3 7/16" (80mm) from wall. Concealed wall plate.

⚡B-6827 Similar to B-682, but with satin finish.



⚡B-232 HOOK STRIP

Type 304 stainless steel, satin finish. Hooks are 1" W, 6 1/2" H (25 x 165mm); project 2 1/4" (55mm) from wall. Mounting strip is 4" (100mm) high and has 1/4" (6mm) return.

MODEL NO.	NO. HOOKS	LENGTH
⚡B-232x24	3	24" (610mm)



B-983 VANDAL-RESISTANT CLOTHES HOOK (SECURED FROM FRONT)

Type 304 satin-finish stainless steel. Back plate is 14-gauge (2mm). Hook snaps down for safety if excessively loaded. Back plate 4" W, 4" H, 7/8" D (100 x 100 x 20mm). Hook projects 1 1/4" (30mm) from back plate. Furnished with tamper-resistant mounting screws.



B-985 VANDAL-RESISTANT HOOK STRIP

Back plate is 14-gauge (2mm), type 304, satin-finish stainless steel. Four stainless steel hooks snap down for safety if excessively loaded. Furnished with tamper-resistant mounting screws. Unit 18" W, 5 1/2" H, 7/8" D (455 x 140 x 20mm). Hooks project 1 1/4" (30mm) from back plate.

