



ACCESS FLOOR PRODUCTS

*Higher Education: Yale University, Kroon Hall,
New Haven, CT, 58,200 ft², LEED Platinum*

Exclusive Tate Finishes

Stone Tile

Terrazzo Stone Tile Features

- Made of a polyester resin, calcium carbonate, glass and marble chips.
- Ground smooth, polished, sealed and routed for a beautiful long lasting finish.
- Recycled glass and resin fillers contain high recycled content.
- Installs quickly saving time and maintaining accessibility.

Porcelain Tile Features

- Made with PVC Edge for consistent seams that look more like tradition grout lines.
- Wide selection of colors and style from multiple manufactures.
- Installs quickly saving time and maintaining accessibility.

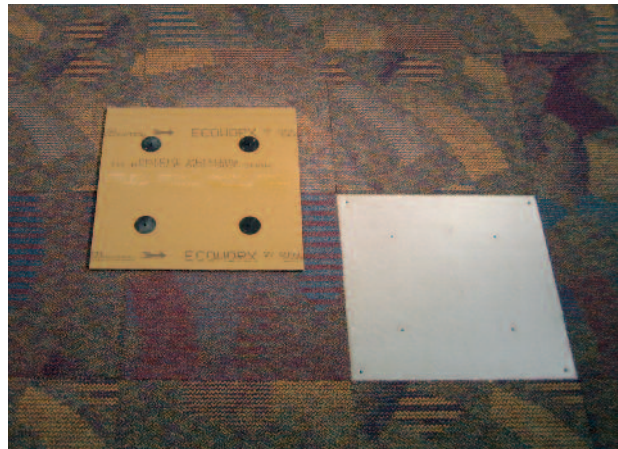


For more info on Tate's Terrazzo Stone Finish visit www.tateinc.com/products/tate_terrazzo.aspx

PosiTile® Carpet

PosiTile® System Features

- 24" and 60cm PosiTile® carpet tiles with four permanently affixed positioning buttons are quickly positioned on access floor panels for one-to-one fit.
- No sticky adhesive on floor panels when carpet tiles are removed.
- Carpet waste is avoided when floor panels and carpet tiles with matching cutout holes are relocated. No attic stock of carpet required due to planned churn.
- Makes workstation relocation fast and inexpensive.
- PosiTile® is available in a multitude of colors and patterns.
- Available with state-of-the-art static control properties.
- A totally sustainable, cradle to cradle carpet tile product.



For more info or to download a copy of Tate's PosiTile brochure visit www.tateinc.com/products/positile.aspx

Tate Hardwood

Engineered Hardwood System Features

- Made of a 3.4mm natural wood bonded to 11mm Albasia wood backer.
- Sanded smooth and finished with an field applied eco certified high solids oil for a long lasting durable finish.
- Different shades can be accomplished with the use of a stain and oil mix which is field applied and buffed.
- Factory laminated with no trim edge for monolithic look
- Square sides with top edges beveled.
- The backer is made from "compressed" vertical plies of rapidly renewable plantation Albasia.
- Naturally VOC free.
- Virtually free of petroleum products and carrying a long potential use has minimized its environmental footprint.
- No harsh chemicals required to clean hardwood tile.



For more info on Tate's Engineered Hardwood Finish visit www.tateinc.com/products/tate_hardwood.aspx

Aesthetic Options For Any Application

Finishes

The advantages of access flooring and underfloor service distribution are beneficial to a wide range of building applications - from office to educational, mission critical, casinos and beyond. Just like the buildings themselves, the spaces within them have varied and specific requirements, both functionally and aesthetically. Tate offers a wide variety of factory laminated finishes so you can implement the appropriate look, feel and durability for any application. As with conventional flooring, the access floor finish options are limitless.

Selection of the many floor materials and finishes available



Cork



Wood Laminate



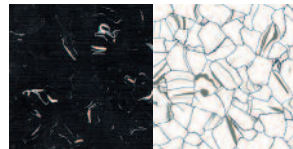
Engineered Hardwood



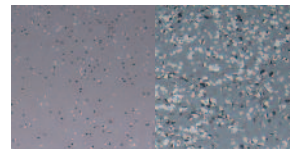
Porcelain



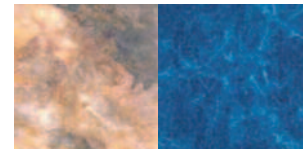
High Pressure Laminate



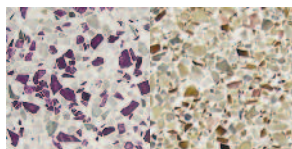
Static Control Vinyl



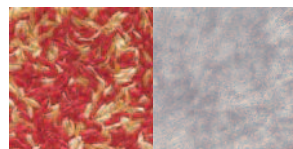
Rubber



Luxury Vinyl



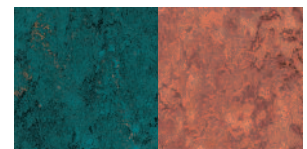
Terrazzo



Freelay Hard Surfaces



Carpet Tile



Linoleum



Finishes Online

There are many different materials, vendors and application methods used to apply finishes on or over access flooring. Tate has comprised an online resource of tested and approved finishes for access floor applications. On the website you will find vendor contact information, application renderings, and product photos to help you select a finish for your facility.

To access the finishes section of our website please visit www.tateinc.com/products/finishes.aspx. If you are interested in using a material or vendor that does not appear on the list or would like a printed finished brochure please contact the Tate Hotline at **877-999-8283** or e-mail tateinfo@tateinc.com