

28-70 Series - Wall Mounting Brackets



**28-LV2RP
DUAL GANG CABLE
DISTRIBUTION MOUNTING
BRACKET**

Dual gang low voltage bulk cable mounting bracket designed for easy installation. Can be installed quickly using a 4.5" hole saw in 1/4" to 1 1/2" dry wall. Can also be used with our 28 series designer style wall plates.

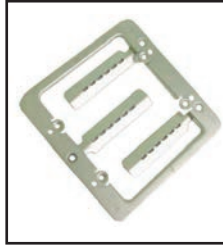
Dimensions:

5 3/8" W x 5 1/4"H x 2 1/8" D

Total Internal Depth: 2"

Measured from the back of flange

Color: White



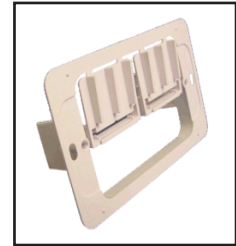
**70-558 SINGLE GANG
70-559 DUAL GANG**

Stainless steel EZ mount plate Comes with two mounting screws. Cut opening in the drywall and bend the tabs back inside the wall then use the supplied screws to secure the front of the plate to the tabs. (Mounting Hardware Included).



**70-553A
FLUSH MOUNT WALL
BRACKET**

Stainless steel wall bracket with two bendable tabs for a standard single gang wall opening.



**70-556-P Single Gang
70-557-P Double Gang
FLUSH MOUNT PLASTIC
WALL BRACKET**

Single or Double gang flush mount bracket with adjustable locking mounting tabs



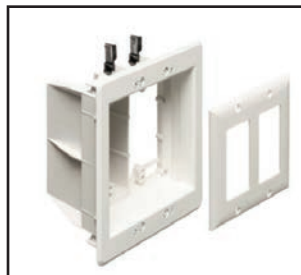
**70-568
SINGLE GANG FLUSH
MOUNT PLASTIC WALL
BRACKET**

Single gang plastic flush mount bracket with rotating adjustable/locking mounting tabs, provides a large open area behind the wall plate for volume controls and other A/V products to mount in, Color is black.



**70-569
DUAL GANG FLUSH
MOUNT PLASTIC WALL
BRACKET**

Double gang plastic flush mount bracket with rotating adjustable/locking mounting tabs, provides a large open area behind the wall plate for volume controls and other A/V products to mount in, Color is black.



**28-TVBU505 (WHITE)
28-TVBR505 (BLACK)
RECESSED TWO GANG
COMBO BOX**

Allows you to mount LCD and plasma TVs, and other system components flush against the wall. This two-gang box is a combo box with half 110V for power and half low voltage for Class 2 wiring of satellite or cable TV, speakers, surround-sound, etc. Mounting "wings" tighten against the wall board or screwed directly to the stud to hold the box firmly in place. There's no wobble. Plugs stay inside - don't protrude past the wall! for a secure installation. Available in a white or black finish. Material paintable ABS plastic. All the necessary mounting hardware is included.



**28-LVU1W (WHITE)
28-LVU1BL (BLACK)
RECESSED TWO GANG
COMBO BOX**

The 28-LVU1W, LVU1BL series recesses low voltage box is the perfect space saver behind LED/LCD or Plasma TVs. This single gang, recessed, low voltage box allows for AV cables to come out of the wall starting from behind the sheetrock surface. The recessed feature allows connectors to be set back so flat panel TVs can be placed closer to the wall. Arlington's innovative design not only saves space but allows for all new constructions or any retrofit applications. All the necessary mounting hardware is included.