

CALRAD

60 series - Analog Panel Meters

60-118 THROUGH 60-133 2³/₈" FULL VIEW PANEL METERS

Designed for modernistic equipment. Beautiful appearance, easy to read D'Arsonval type movement, accuracy within 2%. Will mount in panels up to ³/₁₆" thick, has zero adjustment screw. Size: 2³/₈" x 1³/₄" x 1¹/₄" deep, including terminals and will mount into 1¹/₂" hole. Illumination Kit available for all of this series (60-149). Available in bulk or packaged. Comes with meter cut out template and mounting hardware. 60-200 Mounting hardware only for Calrad meters 60-118 - 60-148.

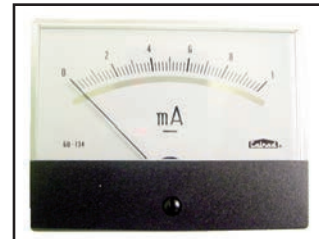
| | |
|--|---|
| 60-118 0-1 mA, DC resistance: 1mA/120Ω | 60-129 0-50 μA, DC resistance: 50μA/2400Ω |
| 60-121 ... 0-15 Vdc, DC resistance: 1mA/120Ω+15kΩ | 60-130 0-100 μA, DC resistance: 100μA/1200Ω |
| 60-122 ... 0-30 Vdc, DC resistance: 1mA/120Ω+30kΩ | 60-133 VU Meter, DC resistance: 600Ω+DiodeBr.+3.9kΩ/120Ω |
| 60-125 0-150 Vac, DC resistance: 1mA/120Ω+DiodeBr.150kΩ | 60-149 Illumination Kit, 6vdc at 50mA |
| 60-127 50-0-50 μA, DC resistance: 50μA/1200Ω | |



60-134 THROUGH 60-148 3" FULL VIEW PANEL METERS

Designed for modernistic equipment. Beautiful appearance, easy to read D'Arsonval type movement, accuracy within 2%. Will mount in panels up to ³/₁₆" thick, has zero adjustment screw. Size: 3¹/₈" x 2¹/₂" x 1¹/₈" deep, including terminals and mounts into 1²⁵/₃₂" hole. Illumination Kit available for all of this series (60-149). Available in bulk or packaged. Comes with meter cut out template and mounting hardware.

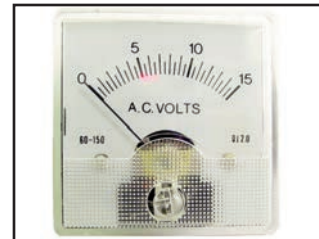
| | |
|---|--|
| 60-134 0-1 mA, DC resistance: 1mA/120Ω | 60-142 50-0-50 μA, DC resistance: ±50μA/120Ω |
| 60-136 ... 0-15 Vdc, DC resistance: 1mA/120Ω+15kΩ | 60-144 0-50 μA, DC resistance: 50μA/2400Ω |
| 60-137 ... 0-30 Vdc, DC resistance: 1mA/120Ω+30kΩ | 60-148 VU Meter, DC resistance: 600Ω+DiodeBr.+3.9kΩ |
| 60-140 0-150 Vac, DC resistance: 1mA/120Ω+DiodeBr.+150kΩ | 60-149 Illumination Kit, 6 Vdc at 50mA |



60-150 THROUGH 60-175 1³/₄" PANEL METERS

Clear plastic face, D'Arsonval type movement, 1.73" square face. Meters fit into 1¹/₂" diameter hole in panel and are calibrated to be accurate within 2%. Has zero set screw adjustment. Will enhance the looks of any equipment on which it is used. Listed below are the following sizes and specifications. Available in bulk or packaged. Comes with meter cut out template and mounting hardware. 60-201 Mounting hardware only for Calrad meters 60-150 - 60-175.

| | |
|--|--|
| 60-150 0-15 Vac, DC resistance: 1mA/120Ω+DiodeBr.+15kΩ | 60-161 ... 0-200 mA DC, DC resistance: 10mA/3Ω+par.Shunt 0.4x55 |
| 60-151 0-150 Vac, DC resistance: 1mA/120Ω+DiodeBr.+150kΩ | 60-163 ... 0-500 mA DC, DC resistance: 10mA/3Ω+par.Shunt 0.5x40 |
| 60-152 0-15 Vdc, DC resistance: 1mA/120Ω+15kΩ | 60-165 0-50 μA DC, DC resistance: 50μA/2400Ω |
| 60-153 0-30 Vdc, DC resistance: 1mA/120Ω+30kΩ | 60-166 0-100 μA DC, DC resistance: 100μA/1200Ω |
| 60-154 ... 0-200 Vdc, DC resistance: 1mA/120Ω+200kΩ | 60-167 0-200 μA DC, DC resistance: 200μA/600Ω |
| 60-155 ... 0-300 Vdc, DC resistance: 1mA/120Ω+300kΩ | 60-168 0-500 μA DC, DC resistance: 500μA/300Ω |
| 60-156 ... 0-500 Vdc, DC resistance: 1mA/120Ω+500kΩ | 60-169 ... 50-0-50 μA DC, DC resistance: ±50μA/1200Ω |
| 60-158 0-1 mA DC, DC resistance: 1mA/120Ω | 60-171 ... 0-10 Amp DC, DC resistance: 10mA/3Ω+par.Shunt 1.3x19 |
| 60-159 0-10 mA DC, DC resistance: 10mA/3Ω | 60-172 ... 0-30 Amp DC, DC resistance: 10mA/3Ω+par.Shunt 2.3x24 |
| 60-160 0-100 mA DC, DC resistance: 10mA/3Ω+par.Shunt 0.2x46 | 60-175 VU, DC resistance: 600Ω+DiodeBr.+3.9kΩ |



60-180 THROUGH 60-182 2" EDGEWISE PANEL METERS

Clearview, precision movements, moving coil nuclear magnetic steel type. Zero set screw adjustment. Accurate within 2%. Available in bulk or packaged.

| |
|---|
| 60-180 (EW2) "S"..... ±100μA/650Ω, red pointer. Internal Resistance 150 ohms nominal |
| 60-181 (EW2) Balance..... 200μA/650Ω, red pointer. Sensitivity 100 μA, Resistance 600 ohms |
| 60-182 (EW2) VU |

Specifications

| | | |
|---|---|---|
| Mounting Centers..... 1 ¹⁵ / ₁₆ " | Overall Depth..... 1 ⁷ / ₁₆ " | Overall Height..... 1 ¹ / ₈ " |
|---|---|---|



60-187 AND 60-188 3¹/₄" EDGEWISE PANEL METERS

Compact size, easy to read. Moving coil type with zero set screw adjustment. Used on most transistorized equipment. Listed below are the following sizes and specifications. Available in bulk or packaged.

| |
|--|
| 60-187 (EW75) VU 500μA/650Ω, red pointer. Calibrated and damped in accordance with standard vu meter practice |
| 60-188 (EW75) Battery..... 200μA/650Ω, red pointer. Sensitivity 130 μA, Internal Resistance 600 ohms |

Specifications

| | |
|--|-------------------------|
| Mounting Centers..... 1 ³ / ₁₆ " | Depth..... 1" |
| Height..... 3/4" | Back of Panel..... 7/8" |



60-190 MINI PILOT METER

1/2" diameter, mounts into 7/16" hole. 1/2" depth behind panel. Moving coil type construction. Movement: 0-500μA. Internal Resistance: 700Ω abd 0-1mA/350Ω red pointer with red to green face. Red and black wires 4" long. M106-230 "Intensity". Center sensitivity 375μA. Resistance 500Ω. Available in bulk or packaged.

