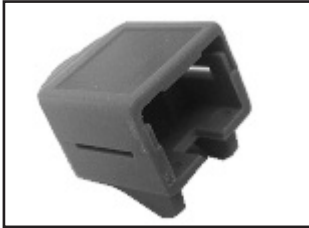


# CALRAD

## 72 Series - Network Products



### FIELD INSTALLABLE 2-PIECE SNAP-ON RJ45 SNAGLESS BOOTS

72-105-BK	Black
72-105-BU	Blue
72-105-IV	Ivory
72-105-OR	Orange
72-105-RD	Red
72-105-WH	White
72-105-YL	Yellow



### KEYSTONE BLANK CONNECTOR INSERT

Blank insert with 3/8" hole. For use with Calrad connectors and Keystone cavity wall plates.

72-217-IV	Ivory
72-217-WH	White



### KEYSTONE BLANK INSERT

Blank insert for use with Calrad Keystone cavity wall plates.

72-213-AL	Almond
72-213-IV	Ivory
72-213-WH	White



CAT 5e

### 72-109 CAT-5e INLINE COUPLER

Connect 2 CAT-5, CAT-5e cables together. Bandwidth up to 500Mbps. Meets FCC part 68. Contacts are plated with 50 microns of gold over 100 microns of nickel on phosphor. Size: 1.02"W x .98"H x 1.88"D.. Color is white.

72-109-CAT6 for Cat-6 inline coupler version



### 72-230 KEYSTONE PLASTIC WALL PLATES

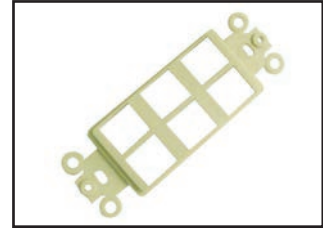
Includes mounting hardware. Available in White, Almond and Ivory

72-230-1	1 port, White
72-230-2	2 ports, White
72-230-3	3 ports, White
72-230-4	4 ports, White
72-230-6	6 ports, White
72-230-1-AL	1 port, Almond
72-230-2-AL	2 ports, Almond
72-230-3-AL	3 ports, Almond
72-230-4-AL	4 ports, Almond
72-230-6-AL	6 ports, Almond
72-230-1-IV	1 port, Ivory
72-230-2-IV	2 ports, Ivory
72-230-3-IV	3 ports, Ivory
72-230-4-IV	4 ports, Ivory
72-230-6-IV	6 ports, Ivory



### 72-231 ANGLED CAVITY KEYSTONE WALL PLATES

72-231-1	1 port, White
72-231-2	2 ports, White
72-231-3	3 ports, White
72-231-4	4 ports, White



### DESIGNER STYLE CAT-5 KEYSTONE WALL PLATE INSERTS

Includes mounting screws.

72-233-1	1 port, White
72-233-2	2 ports, White
72-233-3	3 ports, White
72-233-4	4 ports, White
72-233-6	6 ports, White
72-233-1-IV	1 port, Ivory
72-233-2-IV	2 ports, Ivory
72-233-3-IV	3 ports, Ivory
72-233-4-IV	4 ports, Ivory
72-233-6-IV	6 ports, Ivory



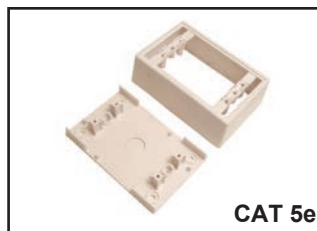
CAT 5e

**72-108-WH DUPLEX ENHANCED SURFACE MOUNT JACK**  
Up to 350MHz PCB surface mount jack with 110 IDC, allows for quick and easy installation. UL certified to meet EIA/TIA 568A or B, TSB 40A specifications. 2 RJ45 jacks. Includes mounting hardware.



CAT 5e

**72-107-WH SINGLE ENHANCED SURFACE MOUNT JACK**  
Up to 350MHz PCB surface mount jack with 110 IDC, allows for quick and easy installation. UL certified to meet EIA/TIA 568A or B, TSB 40A specifications. 1 RJ45 jack. Includes mounting hardware. Color is white



CAT 5e

**72-236-WH PLASTIC CAT-5, CAT-5e BACK BOX**  
For use with Calrad 72-229-1, 72-229-2 duplex style Keystone wall plates. Includes mounting hardware. Color is white



### 72-248 LAN & VOICE CABLE TESTER

Tests for RJ45 modular connection with 258A, 568A & B, 356A wiring and 10 baseT & BNC coaxial. Includes 2 adapters for USOC RJ12 and RJ11 test usage. Performs test of cable continuity, miss wiring and polarization by the color of the L.E.D. indicators. Detachable remote unit for installed cabling. Powered using a 9V battery. Includes black ballistic nylon carrying case.