

QUALITY ELECTRONIC WORKBENCHES

Electronic Workbenches With Modular Cabinets

- Locking drawer cabinet with four drawers.
- Locking door cabinet with one adjustable shelf.

Drawers have an adjustable divider. Full depth shelf in door cabinet is adjustable in 1/4" increments. Front panel has knockouts for four duplex outlets and a switch (order optional wiring kit below). Choice of three tops. 1 3/4" thick solid hardwood butcher-block top, white 1/2" thick high-pressure laminate top with particleboard core, or 1/2" thick steel top. Shipped unassembled (cabinets may be installed on either side). Medium Gray. FOB Shipping Point.

ELECTRONIC WORKBENCHES WITH MODULAR CABINETS

Product No.	Size W x D x H	Top	Drawer/Door Units	Wt. (lbs.)	Price Ea.
HEMB-1-3072M	72 x 30 x 33 3/4	Hardwood	2 Drawer Units	267	\$870.68
HEMB-2-3072M	72 x 30 x 33 3/4	Hardwood	1 Drawer & 1 Door Unit	243	725.57
HEMB-1-3072P	72 x 30 x 33 3/4	Laminate	2 Drawer Units	274	811.39
HEMB-2-3072P	72 x 30 x 33 3/4	Laminate	1 Drawer & 1 Door Unit	250	666.28
HEMB-1-3072S	72 x 30 x 33 3/4	Steel	2 Drawer Units	248	740.25
HEMB-2-3072S	72 x 30 x 33 3/4	Steel	1 Drawer & 1 Door Unit	224	595.13

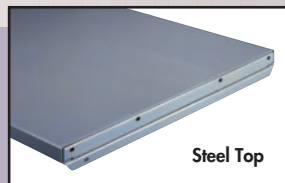
Electronic Workbenches With Panel Legs

- Panel legs and frame are 16-gauge box-formed steel for strength and rigidity.

Channel-shaped stringer ties legs rigidly together. Front panel has knockouts for four duplex outlets and a switch (order optional wiring kit below). Choice of three tops: 1 3/4" thick solid hardwood butcher-block top, white 1/2" thick high-pressure laminate top with particleboard core, or 1/2" thick steel top. Shipped unassembled. Medium Gray. FOB Shipping Point.

ELECTRONIC WORKBENCHES WITH PANEL LEGS

Product No.	Size W x D x H	Top	Wt. (lbs.)	Price Ea.
HEB-1-3072M	72 x 30 x 33 3/4	Hardwood	178	\$431.95
HEB-1-3072P	72 x 30 x 33 3/4	Laminate	175	355.73
HEB-1-3072S	72 x 30 x 33 3/4	Steel	156	297.00



Locking Drawer

Steel drawer operates smoothly on ball bearing rollers. Units can be bolted together for additional storage. Drawer is equipped with adjustable divider and a removable tray. Medium Gray. FOB Shipping Point

HWBD-1LMG Wt. 20 (lbs.) Price Ea. \$47.43
15"W. x 18"D. x 8 1/4"H.

Mounting Angles

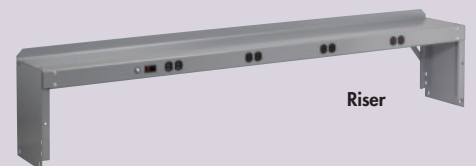
HWBLB-30 Wt. 3 (lbs.) Price Per Pair \$7.51
(Order one pair of mounting angles per drawer.)



Wiring Kit

Pre-wired for quick and easy installation. Comes complete with 4 duplex receptacles, on/off switch with pilot light, 8' grounded cord and plug, 15 amp, 115V service and circuit breaker. For use in workbenches and risers.

HWK-1 Wt. 3 (lbs.) Price Ea. \$58.72



Risers

- Adds extra storage for tools and testing equipment.
- Can be double stacked.

Riser is 16 ga. steel with a load rating of 200 lbs. evenly distributed. Riser has knockouts for 4 duplex outlets and a switch (order wiring kit separately). Medium Gray. FOB Shipping Point.

HRE-1072 Wt. 31 (lbs.) Price Ea. \$64.93
72"W. x 10 1/2"D. x 12"H.

HRE-18-1572 Wt. 43 (lbs.) Price Ea. \$85.26
72"W. x 15"D. x 18"H.