

Fig. 65

Light Duty Adjustable Clevis

Size Range: 1/2" through 4"

Material: Carbon steel

Finish: Plain or Galvanized

Service: Recommended for suspension of **stationary** pipe or conduit.

Maximum Temperature: Plain 650° F, Galvanized and Epoxy 450° F

Approvals: Complies with Federal Specification WW-H-171-E (Type 12).

Installation: Hanger load nut above the clevis must be tightened securely to assure proper hanger performance.

Adjustment: Vertical adjustment is provided, varying with the size of clevis. Tighten upper nut after adjustment.

Features: An economical attachment for light duty service.

Ordering: Specify pipe size, figure number, name and finish.

Metric nut available upon request.

Caution: When an oversize clevis is used, a pipe spacer or multispacer should be placed over clevis bolt to ensure that the lower U-strap will not move in on the bolt.

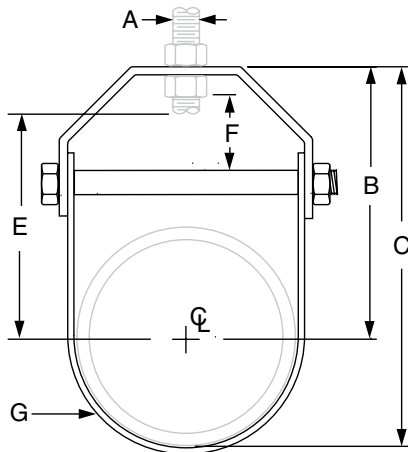


FIG. 65: LOADS (LBS) • WEIGHT (LBS) • DIMENSIONS (IN)

Pipe Size	Max Load	Weight	Rod Size A	B	C	Rod Take Out E	Adjustment F	G Width Lower	
1/2	150	0.10	3/8	1 11/16	2 3/32	1 1/4	7/16	5/8	
3/4		0.17		1 7/8	2 13/32	1 7/16	1/2		
1	0.18	2 5/32		2 13/16	1 11/16	5/8			
1 1/4	250	0.21		2 17/32	3 3/8	2 1/16	13/16		
1 1/2		0.24		2 13/16	3 13/16	2 3/8	15/16		
2		0.26		3 11/32	4 17/32	2 7/8	1 3/16		
2 1/2	350	0.50		3 27/32	5 9/32	3 1/4	1 5/16		3/4
3		0.59		4 15/32	6 7/32	3 7/8	1 5/8		
3 1/2		0.62		4 31/32	6 31/32	4 3/8	1 7/8		
4	400	0.77		5 17/32	7 25/32	4 15/16	2 1/8		

- Table of Contents
- General Notes
- Copper Tubing Hangers
- Stainless Steel Hangers
- CPVC Pipe Hangers
- Pipe Rings
- Clevis Hangers**
- Steel Pipe Clamps
- Socket Clamps
- Beam Clamps
- Structural Attachments
- Brackets
- Ceiling Plates & Flanges
- Concrete Inserts & Attachments
- Hanger Rods
- Rod Attachments
- Bolts, Nuts, Pins & U-Bolts