

Fig. 52

Concrete Rod Attachment Plate

Size Range: 3/8" through 1 1/4"

Material: Carbon steel

Finish: Plain or Galvanized

Service: Structural attachment to concrete ceiling where vertical adjustment is desired. Normally used with threaded rod and nut and anchors of sufficient strength to hold the desired load.

Ordering: Specify rod size, figure number, name and finish.

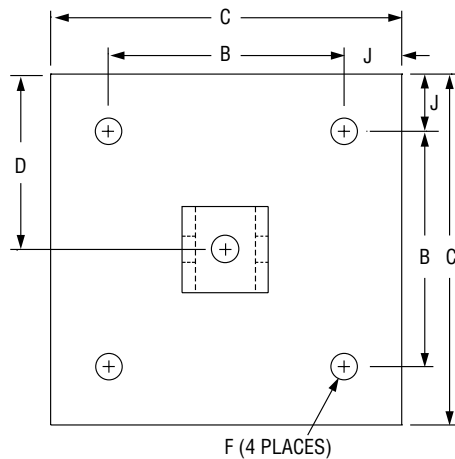
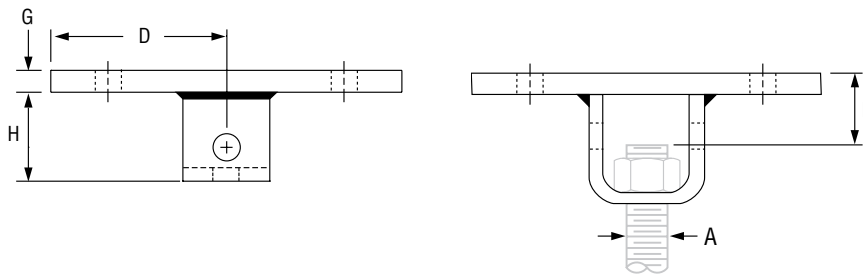


FIG. 52: LOAD (LBS) • WEIGHT (LBS) • DIMENSIONS (IN)

Rod Size A	Max Load ■	Weight	J	B	C	D	E	F	H	G
3/8	730	11.6	1	8	10	5	2 1/4	9/16	2 7/8	3/8
1/2	1,350	11.6					2 1/8			
5/8	2,160	15.1					2 1/4	1 1/16	3 3/8	4 1/4
3/4	3,230	16.1					3 3/8			
7/8	4,480	16.7	2	12	6	3 1/2	13/16	4 1/2	3/4	
1	5,900	34.9				3 5/8				
1 1/4	9,500	40.9				3 5/8	15/16	5		

■ Based on the rod diameter only. Rating is subject to the conditions that the concrete and anchors used are of sufficient strength to hold the load.

- Table of Contents
- General Notes
- Copper Tubing Hangers
- Stainless Steel Hangers
- CPVC Pipe Hangers
- Pipe Rings
- Clevis Hangers
- Steel Pipe Clamps
- Socket Clamps
- Beam Clamps
- Structural Attachments
- Brackets
- Ceiling Plates & Flanges
- Concrete Inserts & Attachments
- Hanger Rods
- Rod Attachments
- Bolts, Nuts, Pins & U-Bolts