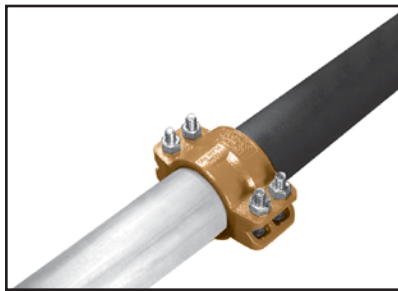


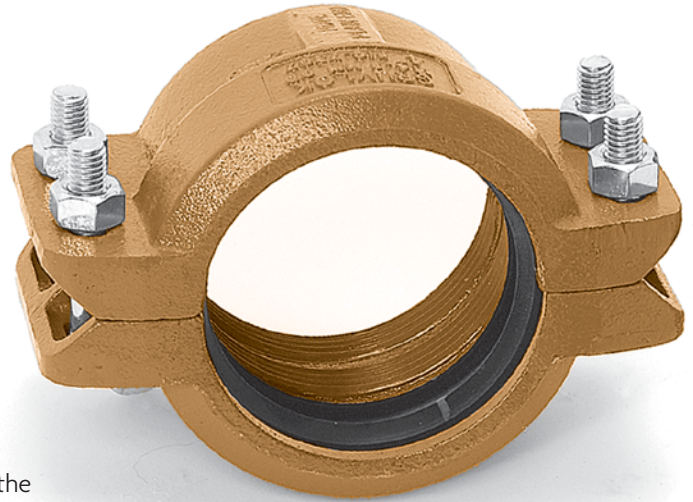
FIG. 7307

HDPE Transition Coupling

The Gruvlok Figure 7307 HDPE transition coupling allows for transition from HDPE pipe or fittings to grooved-end pipe prepared per Gruvlok standard cut or roll groove specifications for steel pipe or Gruvlok fittings. The Figure 7307 incorporates two banks of machined teeth on one side of the housing, and a key section on the other, that engages specifically grooved steel pipe or fittings. The banks of teeth are positioned away from the gasket enhancing the sealing ability of the gasket. The temperature and pressure capabilities of the Figure 7307 exceed the highest temperature and pressure ratings of the HDPE pipe.



The Figure 7307 features a low profile contoured housing with a ramp along the outside diameter on the half of the HDPE coupling. This easy to assemble mechanical joint is used to join HDPE pipe (conforming to ASTM D 2447, D 3000, D 3035, or F 714) to roll grooved or cut grooved standard weight and, roll grooved lightweight pipe, as well as with grooved-end fittings and valves. The coupling can be used with HDPE pipe having SDR values of 7.3 to 32.5.



MATERIAL SPECIFICATIONS

HOUSING:

Ductile Iron conforming to ASTM A 536, Grade 65-45-12

COATING:

Rust inhibiting paint – Color: Orange
 Other Colors Available (IE: RAL3000 and RAL9000)
 For other Coating requirements contact an Anvil Representative.

ANSI BOLTS & HEAVY HEX NUTS:

Heat treated, zinc electroplated, carbon steel oval-neck track bolts conforming to ASTM A 183. Zinc electroplated carbon steel heavy hex nuts conforming to ASTM A 563 Grade A or Grade B, or J995 Grade 2.

WARNING:

1. Gruvlok products for HDPE pipe must be installed using Gruvlok Xtreme™ Temperature Lubricant.
2. The gasket temperature rating may exceed the manufacturer temperature rating for the HDPE pipe. Consult the HDPE pipe manufacturer for the temperature and pressure ratings.

GASKETS: Properties in accordance with ASTM D 2000

Grade E EPDM (Green color code)

Service Temperature Range: -30°F to 230°F (-34°C to 110°C).
 Recommended for water service, dilute acids, alkaline solutions, oil free air and many chemical services.
 NOT FOR USE IN PETROLEUM APPLICATIONS.

Grade T Nitrile (Orange color code)

Service Temperature Range: -20°F to 180°F (-29°C to 82°C).
 Recommended for petroleum applications, air with oil vapor, vegetable and mineral oils.
 NOT FOR USE WITH HOT WATER OR HOT AIR.

For specific chemical applications, reference the Gruvlok Gasket Recommendations section of the Gruvlok catalog.

- Introduction
- Couplings
- Outlets
- Fittings
- Valves & Accessories
- High Pressure
- CTS Copper System
- Di-Electric Nipples
- Plain-End Fittings
- HDPE Couplings
- Sock-It® Fittings
- Stainless Steel Method
- Roll Groovers
- Installation & Assembly
- Special Coatings
- Design Services
- Technical Data
- Master Format 3 Part Specs.
- Pictorial Index

FIG. 7307

HDPE Transition Coupling

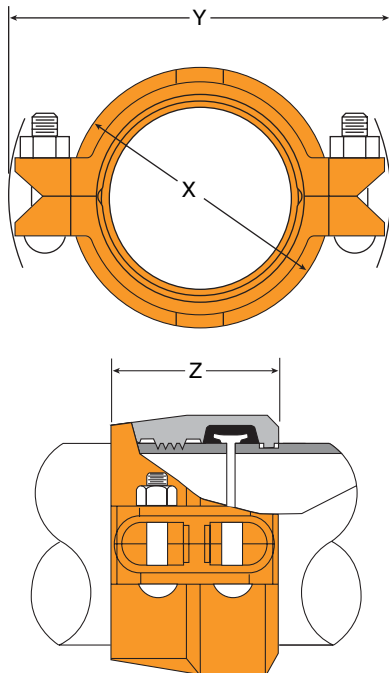


FIGURE 7307 HDPE TRANSITION COUPLING

Nominal Size	O.D. Actual	Coupling Dimensions			Coupling Bolts		Approx. Wt. Ea.
		X	Y	Z	Qty.	Size	
In./DN(mm)	In./mm	In./mm	In./mm	In./mm		In./mm	Lbs./Kg
2	2.375	3 ³ / ₈	6	3 ¹ / ₈	4	1/2 x 2 ³ / ₈	4.5
50	60.3	86	152	79		-	2.0
3	3.500	4 ¹ / ₂	7 ¹ / ₈	3 ¹ / ₈	4	1/2 x 3	6
80	88.9	114	181	79		-	2.7
4	4.500	5 ³ / ₄	8 ¹ / ₂	3 ³ / ₄	4	1/2 x 3	8.5
100	114.3	146	216	95		-	3.9
6	6.625	8	11 ¹ / ₄	3 ³ / ₄	4	5/8 x 3 ¹ / ₂	12.5
150	168.3	203	286	95		-	5.7
8	8.625	10 ¹ / ₂	13 ³ / ₈	4 ¹ / ₄	4	5/8 x 3 ¹ / ₂	20.5
200	219.1	267	346	108		-	9.3
10	10.750	12 ³ / ₈	17	5	4	7/8 x 5 ¹ / ₂	34.5
250	273.1	321	432	127		-	15.6
12	12.750	14 ³ / ₄	19 ¹ / ₂	5	4	7/8 x 5 ¹ / ₂	42.5
300	323.9	375	495	127		-	19.3

HDPE PIPE DIMENSIONAL SPECIFICATIONS

Nominal Size	O.D. Actual	Tolerance +/-	Out of Roundness Tolerance +/-	Pipe Wall Thickness						
				SDR 7.3	SDR 9	SDR 11	SDR 15.5	SDR 17	SDR 21	SDR 32.5
In./DN(mm)	In./mm	In./mm	In./mm	In./mm	In./mm	In./mm	In./mm	In./mm	In./mm	In./mm
2	2.375	0.006	0.035	0.325	0.264	0.216	0.153	0.140	0.113	-
50	60.3	0.15	0.89	8.3	6.7	5.5	3.9	3.6	2.9	
3	3.500	0.016	0.040	0.479	0.389	0.318	0.226	0.206	0.167	0.108
80	88.9	0.41	1.02	12.2	9.9	8.1	5.7	5.2	4.2	2.7
4	4.500	0.020	0.040	0.616	0.500	0.409	0.290	0.265	0.214	0.138
100	114.3	0.51	1.02	15.6	12.7	10.4	7.4	6.7	5.4	3.5
6	6.625	0.030	0.050	0.908	0.736	0.602	0.427	0.327	0.265	0.204
150	168.3	0.76	1.27	23.1	18.7	15.3	10.8	8.3	6.7	5.2
8	8.625	0.039	0.075	1.182	0.958	0.784	0.556	0.507	0.340	0.265
200	219.1	0.99	1.91	30.0	24.3	19.9	14.1	12.9	8.6	6.7
10	10.750	0.048	0.075	1.473	1.194	0.977	0.694	0.632	0.512	0.331
250	273.1	1.22	1.91	37.4	30.3	24.8	17.6	16.1	13.0	8.4
12	12.750	0.057	0.075	1.747	1.417	1.159	0.823	0.750	0.607	0.392
300	323.9	1.45	1.91	44.4	36.0	29.4	20.9	19.1	15.4	10.0

1. Per ASTM F 714
2. Per ASTM D 2447 and D 3035
3. For steel pipe requirements refer to Gruvlok Groove Specifications for steel pipe. See Installation & Assembly directions on page 187.