

BRACKETS

Fig. 206

Steel Side Beam Bracket

Size Range: $\frac{3}{8}$ " through $\frac{5}{8}$ "

Material: Carbon steel

Finish: Plain or Galvanized

Service: Clip can be fastened to side of joist or wall to support hanger rod.

Approvals: Complies with Federal Specification A-A-1192A (Type 34), WW-H-171-E (Type 35) and ANSI/MSS SP-69 and MSS SP-58 (Type 34). UL Listed and FM Approved (steel beam only).

Ordering: Specify rod size, figure number, name and finish.

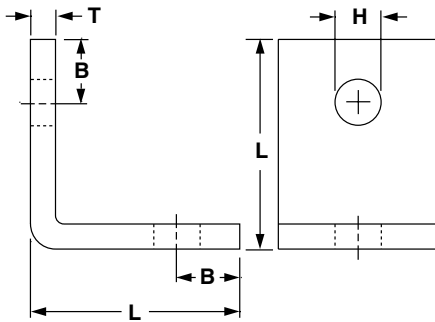
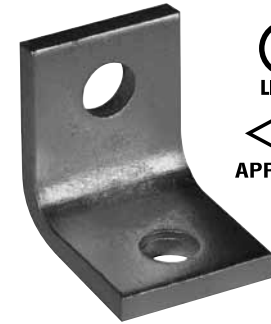


FIG. 206: LOAD (LBS) • WEIGHT (LBS) • DIMENSIONS (IN)

Rod Size A	Max Load		Weight (lbs).	L	B	Hole Size H	T
	With Lag Screw	With Bolt to Steel					
$\frac{3}{8}$	650	1,150	0.44	$2\frac{1}{16}$	$\frac{5}{8}$	$\frac{7}{16}$	$\frac{1}{4}$
$\frac{1}{2}$			0.43			$\frac{9}{16}$	
$\frac{5}{8}$	850	2,000	0.84	$2\frac{1}{2}$	$\frac{3}{4}$	$\frac{11}{16}$	$\frac{3}{8}$

Fig. 207

Threaded Steel Side Beam Bracket

Size Range: $\frac{3}{8}$ " and $\frac{1}{2}$ "

Material: Carbon steel

Finish: Plain or Galvanized

Service: Recommended for attachment to steel or wooden beams, etc.

Approvals: Complies with Federal Specification A-A-1192A (Type 34), WW-H-171-E (Type 35), ANSI/MSS SP-69 and MSS SP-58 (Type 34). UL Listed (Sizes $\frac{3}{8}$ " and $\frac{1}{2}$ ").

FM Approved (Size $\frac{3}{8}$ " for use on steel beam only)

Features: Threaded mounting bracket provides an economical, practical and adjustable means of securing hangers to beams.

Ordering: Specify rod size, figure number, name and finish.

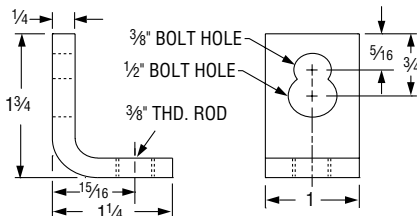


Fig. 207 $\frac{3}{8}$ "

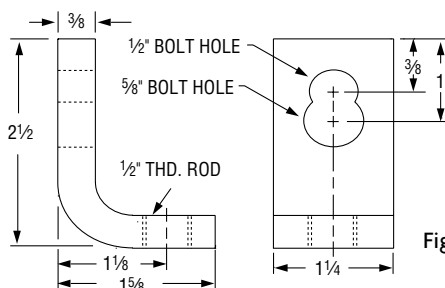


Fig. 207 $\frac{1}{2}$ "

FIG. 207: LOAD (LBS) • WEIGHT (LBS) • DIMENSIONS (IN)

Rod Size A	Bolt Size	Max Load		Weight
		With Lag Screw	With Bolt to Steel	
$\frac{3}{8}$	$\frac{3}{8}$	400	620	0.17
	$\frac{1}{2}$	560		
$\frac{1}{2}$	$\frac{1}{2}$	650	1,150	0.42
	$\frac{5}{8}$	850		