



# FITTINGS W/ UMAC® EFV'S

## PA COMPRESSION FITTINGS Full Couplings with UMAC® Excess Flow Valves

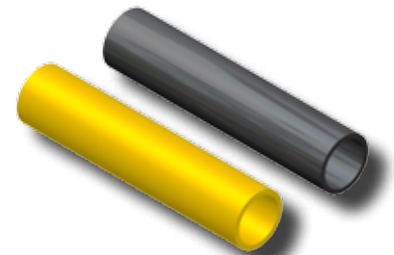
UMAC® EXCESS FLOW VALVES			
EFV SIZE	PE SIZE	WALL	PART NUMBER
UMAC® SERIES 300	1/2" CTS (5/8" OD)	.090	5657-52-1004-70
		.062	5657-52-1004-71
	1" CTS (1 1/8" OD)	.099/.101	5657-52-1008-70
		.090	5657-52-1008-71
	3/4" IPS	SDR-11 (.095)	5657-52-1013-70
1" IPS	SDR-11 (.119)	5657-52-1014-70	
UMAC® SERIES 700	1/2" CTS (5/8" OD)	.090	5657-52-1004-72
		.062	5657-52-1004-73
	1" CTS (1 1/8" OD)	.099/.101	5657-52-1008-72
		.090	5657-52-1008-73
	3/4" IPS	SDR-11 (.095)	5657-52-1013-72
1" IPS	SDR-11 (.119)	5657-52-1014-72	
UMAC® SERIES 1800	1" CTS (1 1/8" OD)	.099/.101	5657-52-1008-74
		.090	5657-52-1008-75
	3/4" IPS	SDR-11 (.095)	5657-52-1013-74
	1" IPS	SDR-11 (.119)	5657-52-1014-74



- For sizes not listed, contact Continental Industries.
- PA Compression fittings rated at 125 psig.

## POLYETHYLENE PIGTAILS For Butt Fusion Applications with UMAC® Excess Flow Valves

UMAC® EXCESS FLOW VALVES				
EFV SIZE	PE SIZE	WALL	PART NUMBER (2406)	PART NUMBER (3408/4710)
UMAC® SERIES 350	1/2" CTS (5/8" OD)	.090	0000-33-5779-24	0000-33-5779-34
		.062	0000-33-5777-24	0000-33-5777-34
UMAC® SERIES 300	1" CTS (1 1/8" OD)	.099/.101	0000-33-5781-24	0000-33-5781-34
		.090	0000-33-5780-24	0000-33-5780-34
	3/4" IPS	SDR-11 (.095)	0000-33-5783-24	0000-33-5783-34
	1" IPS	SDR-11 (.119)	0000-33-5784-24	0000-33-5784-34
UMAC® SERIES 700	1" CTS (1 1/8" OD)	.099/.101	0000-33-5787-24	0000-33-5787-34
		.090	0000-33-5786-24	0000-33-5786-34
	3/4" IPS	SDR-11 (.095)	0000-33-5789-24	0000-33-5789-34
	1" IPS	SDR-11 (.119)	0000-33-5790-24	0000-33-5790-34
UMAC® SERIES 1800	1" CTS (1 1/8" OD)	.099/.101	0000-33-5792-24	0000-33-5792-34
		.090	0000-33-5791-24	0000-33-5791-34
	3/4" IPS	SDR-11 (.095)	0000-33-5794-24	0000-33-5794-34
	1" IPS	SDR-11 (.119)	0000-33-5795-24	0000-33-5795-34



- For sizes not listed, contact Continental Industries.