




BRETFORD BASICS™

32 UNIT NETWORK READY LAPTOP CART

DEVICE COMPATIBILITY	
	LCD Size: ≤ 15.6" (See details next page*)
	Power Connection Type: U.S. AC outlet
	Maximum Current Draw: 2A per device

MDMLAP32NR

The MDM Network Ready Laptop Cart stores, charges and updates 32 laptops and comes standard with Front & Rear Lockable Doors.



Made In The USA



FEATURES

- The MDMLAP32NR ships fully assembled and pre-wired with 33 ethernet cables. A dedicated space for a 19" rackmounted network switch is located in the upper right of the rear compartment.
- Cart is separated into 4 compartments that store 8 devices each for a total of 32 laptops. Laser printed numbers provide identification for every device slot. Shelf dividers store devices vertically and may be removed for storing larger items.
- Full access double doors in the front for the user, and in the rear for the IT administrators.
- The MDMLAP32NR includes a unique "Power Manager" that works with a standard 15 Amp electrical circuit and is designed to analyze power requirements. The system constantly evaluates the amount of power that can be drawn and safely and efficiently distributes current to the devices in a "Round Robin" cycle. The "Power Manager" not only prevents circuit tripping, but also allows each set of device batteries to cool down between charging cycles, thereby extending their life.
- The "Power Manager" also features temperature sensors that control two fans located in the middle, front of the cart. Extensive testing has been performed to ensure that the heat dissipation measures featured in the cart maintain a temperature within the laptops' operating limits.
- Security is provided by the solid steel construction and a unique locking handle that can be opened using either a re-programmable combination or a key.
- Dual-handle design allows different size users to push and pull the cart safely and easily. The left side panel includes a cord winder to keep the power cord neat and out of the way when not in use.
- Easy rolling 5" casters all swivel for tight spaces and two may be fixed to provide added control when moving down a hall.
- Ships fully assembled from the factory, ready to be cable-managed for power.
- Constructed using an average 30% post-consumer recycled steel content and finished in environmentally friendly powder paint. Steel components are 100% recyclable at the end of the product life cycle. Pending UL60950 Certification for safety of technology equipment and GREENGUARD Indoor Air Quality (IAQ) Certification for low-emitting products.
- Made in the USA.



DIMENSIONS

Overall: 48" w x 24" d x 43" h

Storage Slots: 1-11/16" w x 11-1/2" h x 15-13/4" d

COLOR & FINISH

(CTAL) Concrete powder paint with Aluminum tubes.

DEVICE COMPATIBILITY*

MDMLAP32NR Carts are designed to support devices with screen sizes up to 15.6" diagonally. The chart below contains the average dimensions for devices with the most common screen sizes.

Screen Size:	Average Dimensions:
15.4 - 15.6	1.23"H x 14.9"W x 9.9"D
16.0 - 16.4	1.56"H x 15.2"W x 10.4"D

These measurements are meant as a guideline and may not represent every available model. In addition power adapter sizes and connection points can vary greatly and should be considered when determining compatibility.

SUGGESTED SPECIFICATIONS

MDMLAP32 Network Ready Laptop Carts come fully assembled and have one, 38" w x 16" d, 18-gauge steel, middle shelf and one, 38" w x 16" d, 18-gauge steel, bottom shelf. Top and bottom shelves are divided by a 5-1/2" w compartment to house cooling fans. Each of the 4 storage areas can be divided with polypropylene dividers that create up to 8 slots for a total of 32 devices. Dividers may be removed to accommodate larger equipment. Cabinet structure comes pre-assembled and consists of a pre-welded, 14-gauge steel, oval tubing frame and 18-gauge, pre-welded, steel side panels. Two 18-gauge steel doors mount to the front of the cabinet and secure using a built-in handle lock accessible by either combination or key. Carts come with two 18-gauge, steel, rear doors that secure with the same handle lock as the front doors. Each cart has an internal "Power Manager" that regulates the power needed to charge all device batteries quickly and efficiently. Unit has four, 5" heavy-duty, plate mounted casters. All four casters swivel, for maneuverability in tight spaces, with the ability to lock two into a non-swivel mode, for transporting the cart long distances. Two casters, on opposite ends, have locking brakes to prevent rolling. Ships assembled by truck only.

POWER MANAGEMENT

Cart comes with four, 6-outlet power strips plugged into the "Power Manager" which uses a standard 15-amp wall outlet to regulate power in the cart. The system constantly evaluates the amount of power that can be drawn and safely and efficiently distributes current to the devices in a "Round Robin" cycle. This technique allows cool-down time, extending battery life. "Power Manager" is attached to the upper back left section of the interior cabinet and is accessed through the rear doors. LED indicator lights and one auxiliary outlet are included on the side of the cart. The power management unit is overload protected and includes a 9' power cord.

WEIGHT, SHIPPING DIMENSIONS & UPC CODE

Weight: 310 lbs., Freight class 125

Shipping Dimensions: 56" w x 32" d x 50" h

Ships assembled in one (1) carton

MDMLAP32NR - UPC Code: 0 96633 35454 2

MADE IN THE USA

MDM series laptop storage carts are made at Bretford's Chicago area manufacturing facility using union labor.

NETWORK CAPABILITY

Cart comes pre-wired from the factory with 32 network cables secured in the rear cable-management compartment. A dedicated space for a 19" rack-mounted network switch is located in the upper right rear compartment and an additional network cable is included to connect the user-provided switch to the external network through the exterior Ethernet port located on the side of the cart. The "Power Manager" features temperature sensors that control two fans located on the side of the cart. Extensive testing has been performed to ensure that the heat dissipation measures featured in the cart maintain a temperature within the laptops' operating limits.

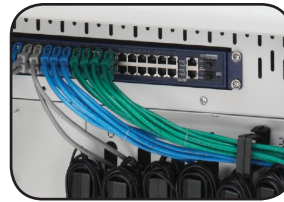
ENVIRONMENTAL SPECIFICATIONS

Carts are constructed with "prime" steel, which has a 25% to 35% post-consumer recycled content. All steel components are recyclable at the end of the product life cycle.



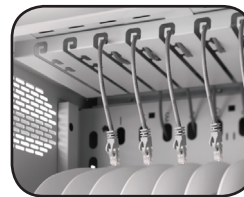
MDMLAP32NR:

REAR DOORS ALLOW ACCESS TO MOUNT YOUR NETWORK SWITCH, AS WELL AS THE REMOVABLE CABLE STORAGE PLATES.



READY FOR NETWORK SWITCH:

COMES WITH ETHERNET CABLES PRE-WIRED AND READY TO PLUGGED INTO THE NETWORK SWITCH IN THE REAR OF THE CART.



CABLE MANAGEMENT:

CABLES ARE THREADED THROUGH THE DIVIDER PANEL TO THE FRONT OF THE CART WHERE A CABLE MANAGEMENT CHANNEL GUIDES THEM TO EACH STORAGE SLOT.



EASE OF ORGANIZATION:

REMOVABLE PLATES AND VELCRO STRAPS ALLOW POWER ADAPTERS TO BE ORGANIZED WHILE SEATED AT YOUR DESK.



LOCKING DOORS:

UNIT IS SECURED BY A UNIQUE BUILT-IN HANDLE LOCK ACCESSIBLE BY EITHER A REPROGRAMMABLE COMBINATION OR A KEY.

11000 SEYMOUR AVENUE
FRANKLIN PARK, ILLINOIS 60131 USA
TOLL FREE PHONE 800-521-9614
PHONE 847-678-2545
TOLL FREE FAX 800-343-1779
FAX 847-678-0852
WWW.BRETFORD.COM



BRETFORD