

WING FITTINGS

DATA:

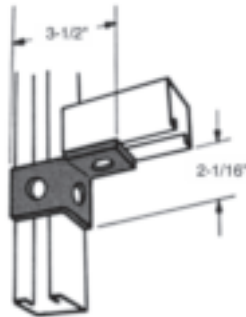
1/4" thick, 1 5/8" wide, holes 9/16" dia., spaced 1 7/8" on center & 1 3/16" from end.

FINISH: Electro-Galvanized

A-321-L (left hand)
A-321-R (right hand)
 THREE HOLE SINGLE
 ANGLE CONNECTOR

(right hand illustrated)

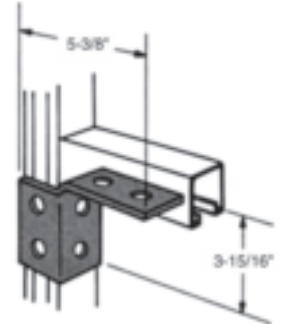
wt. -60#/C



A-321-1-L (left hand)
A-321-1-R (right hand)
 SIX HOLE SINGLE
 ANGLE CONNECTOR

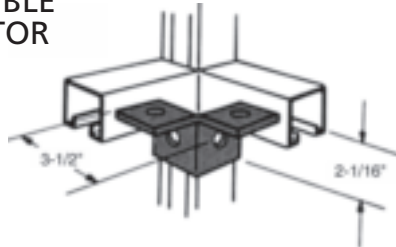
(right hand illustrated)

wt. -119#/C



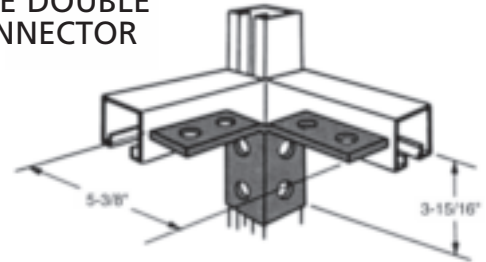
A-326
 FOUR HOLE DOUBLE
 ANGLE CONNECTOR

wt. -76#/C



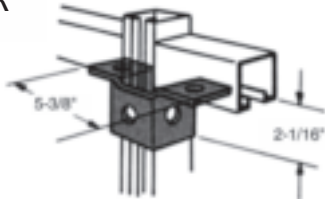
A-326-1
 EIGHT HOLE DOUBLE
 ANGLE CONNECTOR

wt. -155#/C



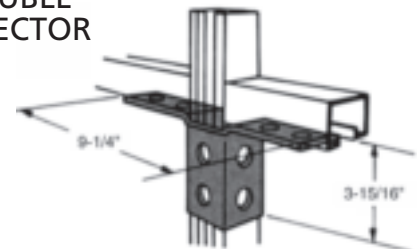
A-327
 FIVE HOLE DOUBLE
 ANGLE CONNECTOR

wt. -93#/C



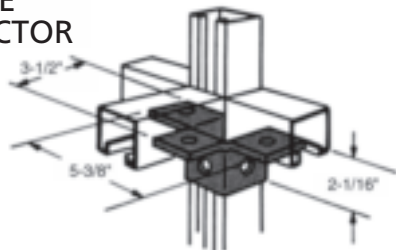
A-327-1
 TEN HOLE DOUBLE
 ANGLE CONNECTOR

wt. -193#/C



A-328
 SIX HOLE TRIPLE
 ANGLE CONNECTOR

wt. -113#/C



A-328-1
 12-HOLE TRIPLE
 ANGLE CONNECTOR

wt. -230#/C

