

flexterior™

M E T A L S T A I R T R E A D S

- 1 **Extruded heat-treated aluminum is resistant to corrosion**
- 2 **Anti-slip epoxy coating with mineral abrasive grits**
- 3 **Exceeds ADA recommendations for slip resistance**
- 4 **UV-stable, custom color matching available**
- 5 **Pre-drilled with countersunk holes for flush finish**



Whether installed outdoors in rugged conditions, indoors in industrial or commercial applications, FlexTerior™ treads provide a slip resistant surface that's made to last. Made of exterior-grade aluminum and inlaid with an epoxy and abrasive grit blend, FlexTerior™ treads are ideal for installation on new or existing stairs and landings.



FLEXCO[®]
innovative design. flooring performance.

flexterior™ treads
C O L O R S



Ash



Cactus



Coal*



Sunshine*



Tomato



Walnut

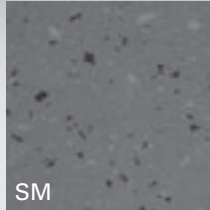


Sapphire

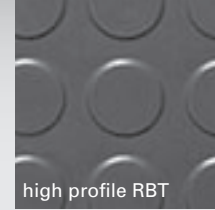
Coal/Coal and Coal/Sunshine color combinations in stock. All other combinations are special order. Color selections must be made from actual samples.

University of North Alabama,
Florence, Alabama
Complete specs on page 69.

Smooth



Radial[®]



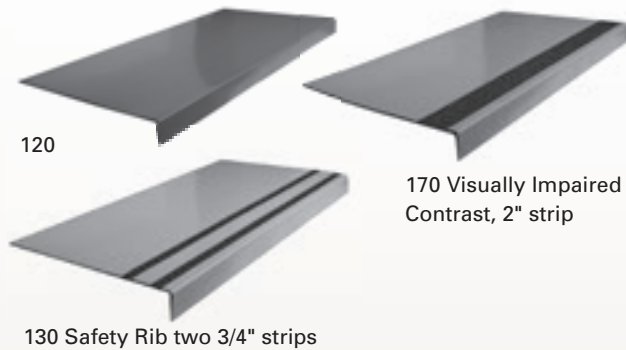
Heavy Duty Smooth 120, 130 & 170

GAUGE	3/16" at nose
DEPTH	12-1/4"
LENGTHS	36", 42", 48", 54", 60", 72"
NOSE	Square
PIECES /CTN	10
WEIGHT /LIN FT (LB)	1.5
MATCHING PROFILE	Smooth Tile or Sheet and Diamond Landing

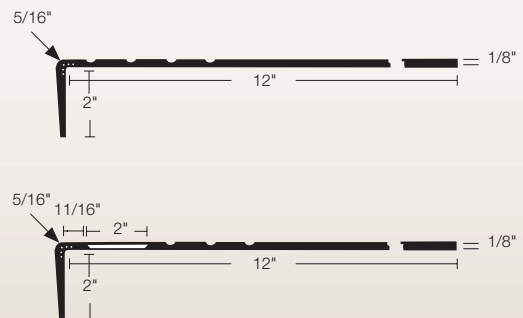
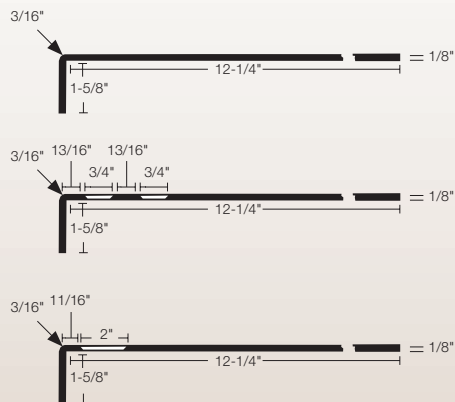
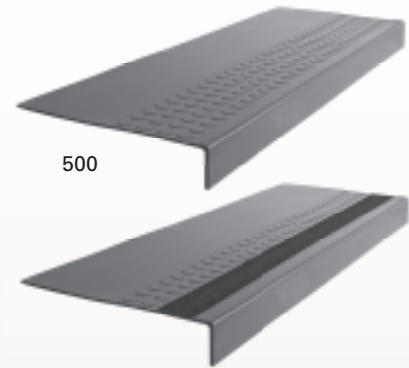
Extra Heavy Duty Radial[®] 500 & 575

GAUGE	5/16" at nose
DEPTH	12"
LENGTHS	36", 42", 48", 54", 60", 72"
NOSE	Square
PIECES /CTN	6
WEIGHT /LIN FT (LB)	2.8
MATCHING PROFILE	Radial [®] High Profile (RBT)

Grit strips for 130 in black only.



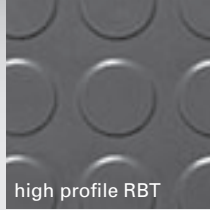
Exclusive metal-reinforced nose included.



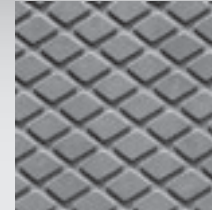


See page 71 for information on smooth and ribbed rubber inserts or abrasive strips.

Radial®



Diamond



**Heavy Duty Radial®
550 & 585**

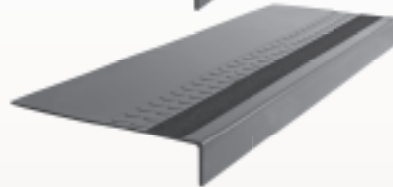
GAUGE	3/16" at nose
DEPTH	12"
LENGTHS	36", 42", 48", 54", 60", 72", 84", 96", 108"
NOSE	Square, adjustable to 60°
PIECES /CTN	6 (72" or less), 4 (84" and up)
WEIGHT /LIN FT (LB)	2.4
MATCHING PROFILE	Radial® High Profile (RBT)

**Extra Heavy Duty Diamond
600 & 675**

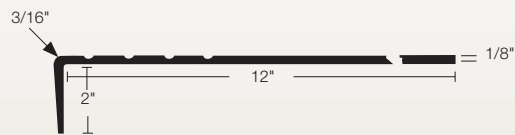
GAUGE	5/16" at nose
DEPTH	12"
LENGTHS	36", 42", 48", 54", 60", 72"
NOSE	Square
PIECES /CTN	6
WEIGHT /LIN FT (LB)	600 2.8 / 675 2.4
MATCHING PROFILE	Smooth Tile or Sheet and Diamond Landing



550



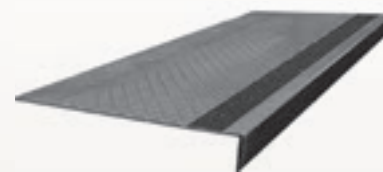
585 Visually Impaired Contrast 2" strip



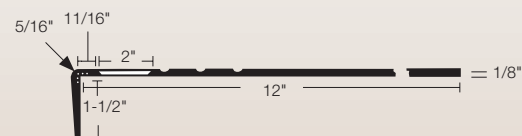
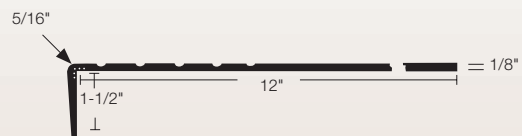
Exclusive metal-reinforced nose included.



600

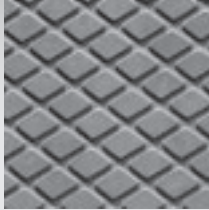


675 Textured/Visually Impaired Contrast 2" strip



rubber stair treads

Diamond



Radial[®] II

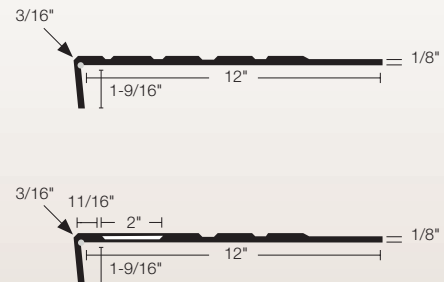
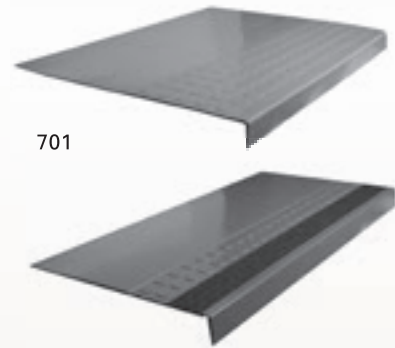
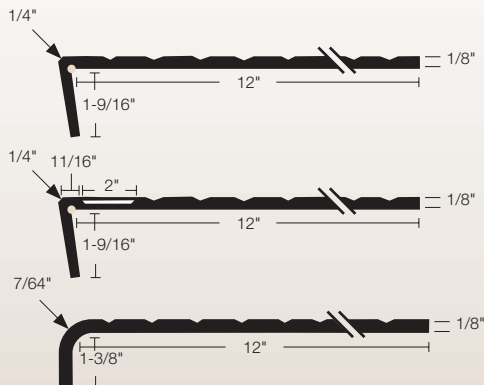
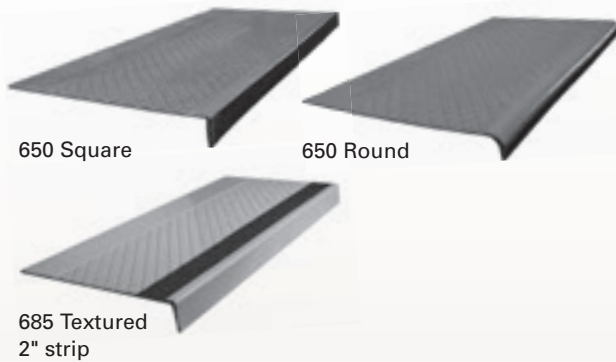


Heavy Duty Diamond 650 & 685

GAUGE	Square 1/4" & round 7/64" at nose
DEPTH	12"
LENGTHS	36", 42", 48", 54", 60", 72", 84", 96", 108"
NOSE	Round Nose only up to 72" in length
PIECES /CTN	6 (72" or less), 4 (84" and up)
WEIGHT /LIN FT (LB)	2.25
MATCHING PROFILE	Smooth Tile or Sheet and Diamond Landing

Heavy Duty Radial[®] II 701 & 776

GAUGE	3/16" at nose
DEPTH	12"
LENGTHS	36", 42", 48", 54", 60", 72", 84", 96", 108"
NOSE	Square, adjustable to 60°
PIECES /CTN	6 (72" or less), 4 (84" and up)
WEIGHT /LIN FT (LB)	2
MATCHING PROFILE	Radial [®] II (RGT)



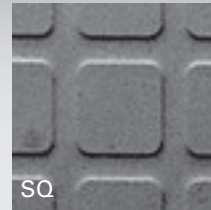


See page 71 for information on smooth and ribbed rubber inserts or abrasive strips.

Radial® II



Square²



**Heavy Duty Extended Radial® II
701E & 776E**

GAUGE	1/4" at nose
DEPTH	15"
LENGTHS	36", 42", 48", 54", 60", 72"
NOSE	Square, adjustable to 60°
PIECES /CTN	6
WEIGHT /LIN FT (LB)	2
MATCHING PROFILE	Radial® II (RGT)

**Heavy Duty Square²
800 & 875**

GAUGE	1/4" at nose
DEPTH	12-1/4"
LENGTHS	36", 42", 48", 54", 60", 72"
NOSE	Square
PIECES /CTN	6 (72" or less)
WEIGHT /LIN FT (LB)	2.8
MATCHING PROFILE	Square ² (SQ)

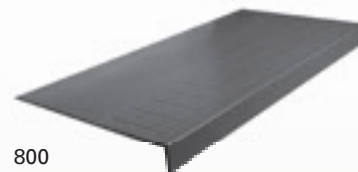
Exclusive metal-reinforced nose included.



701E



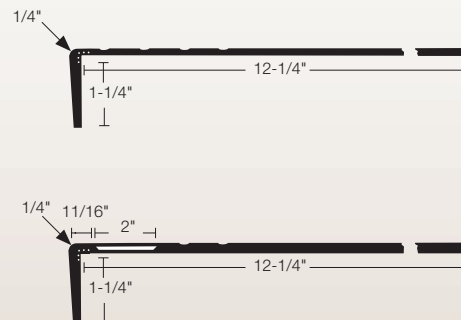
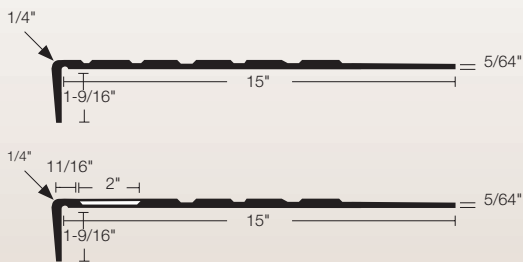
776E Visually Impaired Contrast



800

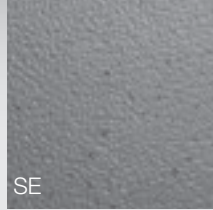


875 Visually Impaired Contrast 2" strip



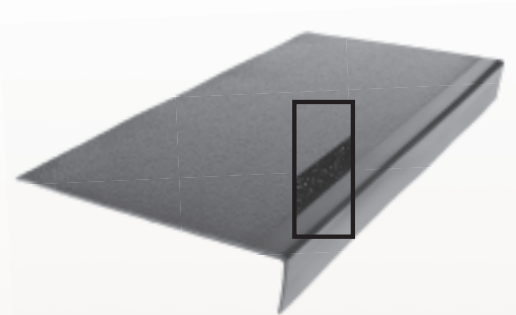
rubber stair treads

Hammered

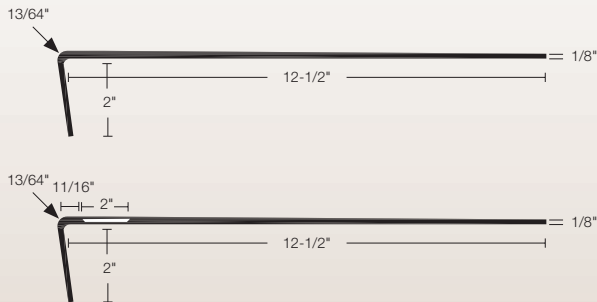


Heavy Duty Hammered Tread with Adjustable Square Nose 900 & 975

GAUGE	13/64" at nose
DEPTH	12-1/2"
LENGTHS	36", 42", 48", 54", 60", 72", 84", 96", 108"
NOSE	Square, adjustable
PIECES /CTN	6 (72" or less), 4 (84" and up)
WEIGHT /LIN FT (LB)	2.0
MATCHING PROFILE	Hammered (SE)



900 975 Visually Impaired Contrast 2" strip

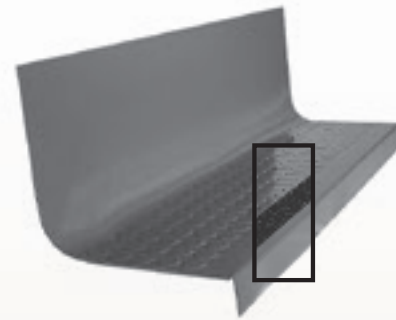


Radial[®] II

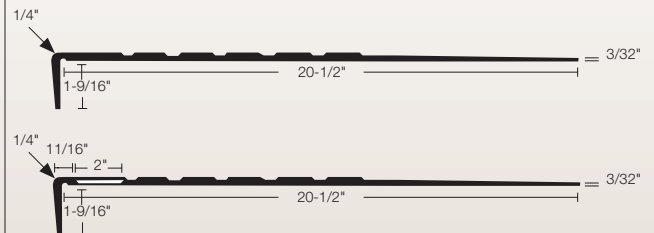


Heavy Duty Radial[®] II One-Piece Tread with Riser 1701 & 1776

GAUGE	1/4" at nose
DEPTH	20-1/2"
LENGTHS	36", 42", 48", 54", 60", 72", 84", 96", 108"
NOSE	Square, adjustable to 60°
PIECES /CTN	6 (48" or less), 4 (54" and up)
WEIGHT /LIN FT (LB)	2.5
MATCHING PROFILE	Radial [®] II (RGT)



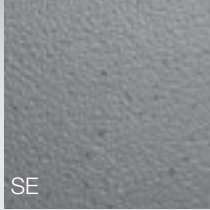
1701 1776 Visually Impaired Contrast 2" strip





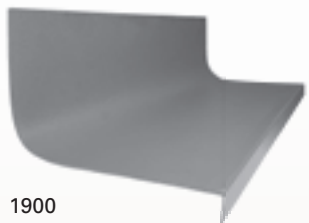
See page 71 for information on smooth and ribbed rubber inserts or abrasive strips.

Hammered

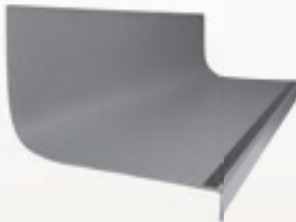


Heavy Duty Hammered One-Piece Tread with Riser 1900 & 1975

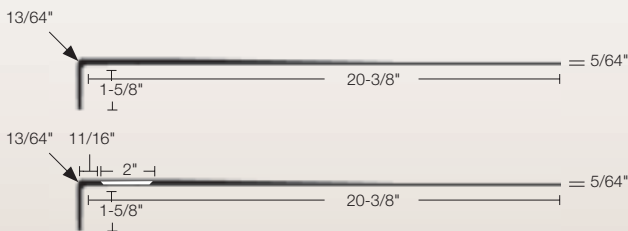
GAUGE	13/64" at nose
DEPTH	20-3/8"
LENGTHS	36", 42", 48", 54", 60", 72"
NOSE	Square
PIECES /CTN	6
WEIGHT /LIN FT (LB)	2.5
MATCHING PROFILE	Hammered (SE)



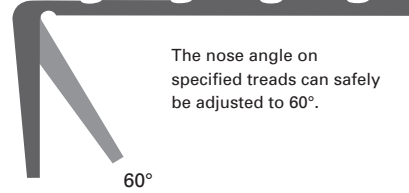
1900



1975 Visually Impaired Contrast, 2" strip



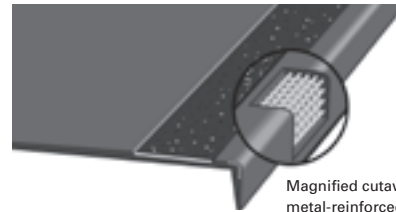
Tread Options for 701, 776, 1701, 1776, 701E, 1776E



The nose angle on specified treads can safely be adjusted to 60°.

Treads with an adjustable nose help speed installation and meet ADA recommendations.

Tread Options for 500, 575, 600, 675, 800, 875



Magnified cutaway to show metal-reinforced nose.

Rubber treads with our exclusive metal-reinforced nose enhance performance and durability.

25-year warranty.

Rubber Stringers + Risers



STR



RSR

STR

RSR

order prefix: **STR***

order prefix: **RSR****

Stringer Material

Risers

Gauge	0.080"
Size	10" x 72"
Pieces /Ctn	10
Weight /Lin Ft (lb)	0.65

Gauge	1/8" solid
	1/8" marbled
Height	7"
Lengths	36", 42", 48", 54", 60", 72", 84", 96", 108"
Pieces /Ctn	24
Weight /Lin Ft (lb)	0.75

*Risers over 84" will be packaged 10 per carton.

* Use prefix SSTR for SpexTones® colors. ** Use prefix SRSR for SpexTones® colors.

> Rubber stringers and risers available in FlexTones®, SpexTones®, and Evolving Styles® colors.

Rubber Tread, Risers & Stringers Adhesive Options

- 3100 Rubber Tile & Tread Adhesive
- 4100 Quik Stik Tread Tape (1", 4" and 9.45")
- 7100 Low Viscosity Epoxy Adhesive
- 7200 Urethane Epoxy Adhesive

5100 Tread Nose Compound Compound must be applied to nose of the tread



Standard Safety Rib Tread

order prefix: **LVT**

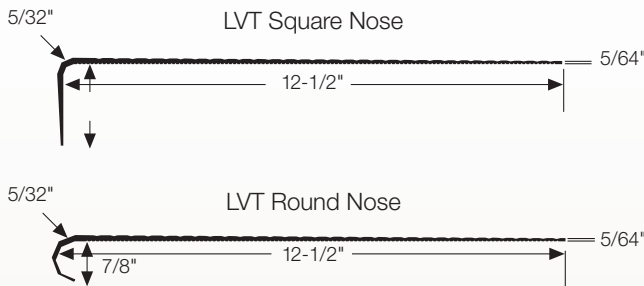
GAUGE	5/32" at nose
DEPTH	12-13/32" square, 12-11/32" round
LENGTHS	42", 48", 72" 36" Available w/Min. Order 50 Treads
NOSE	Round or square
PIECES /CTN	10
WEIGHT /LIN FT (LB)	1.5



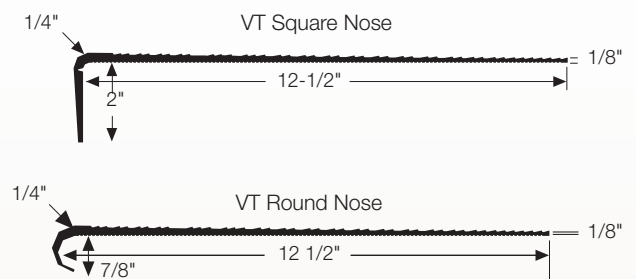
Commercial Safety Rib Tread

order prefix: **VT**

GAUGE	1/4" at nose
DEPTH	12-1/2"
LENGTHS	42", 48", 72" 36" Available w/Min. Order 50 Treads
NOSE	Round or square
PIECES /CTN	6
WEIGHT /LIN FT (LB)	2



Adjustable nose portion should be secured with contact adhesive or FlexTape according to FLEXCO[®] instructions.



Adjustable nose portion should be secured with contact adhesive or FlexTape according to FLEXCO[®] instructions.

Vinyl Stringers + Risers



STV

order prefix: **STV**

Stringer Material

Gauge	0.080"
Size	10"
Length	50' rolls
Weight/	38
Lin Ft (lb)	0.75



RSV

order prefix: **RSV**

Risers

Gauge	0.080" solid
Height	7"
Length	50' rolls
Weight/	38
Lin Ft (lb)	0.75

Vinyl Tread, Risers & Stringers Adhesive Options

- 3100 Vinyl Tile & Tread Adhesive
- 4100 Quik Stik Tread Tape (1", 4" and 9.45")
- 7200 Urethane Epoxy Adhesive

5100 Tread Nose Compound must be applied to nose of the tread

flexterior™ metal treads

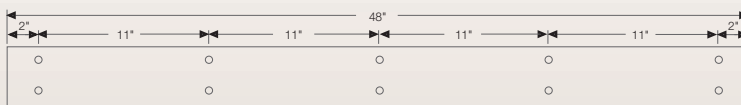
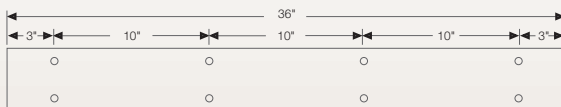
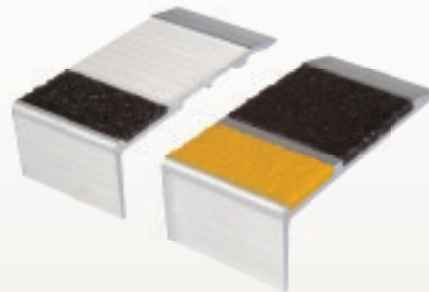
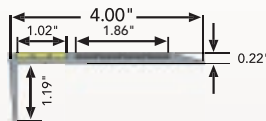
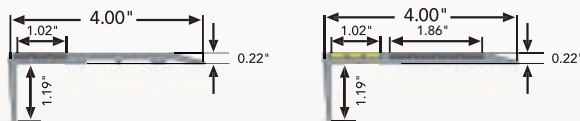
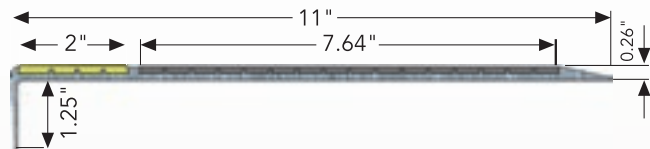
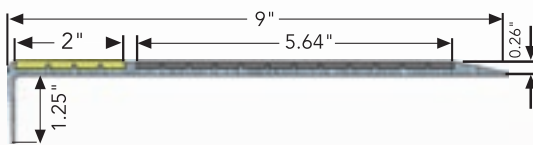


FlexTerior™ Treads order prefix: **FLEX**

GAUGE	1/4" overall
DEPTH	4", 9", plus 11"
LENGTHS	36", 48" Over 48" Special Order
NOSE	Square
PIECES /CTN	6
WEIGHT /LIN FT (LB)	Special Order TBD
SCREW PACKAGING	36" - 9 per set 48" - 13 per set

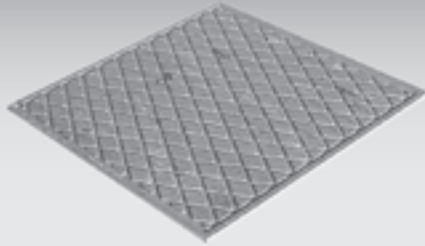
Note: Must indicate concrete or wood installation for proper mechanical fasteners. A premium-grade, exterior polyurethane adhesive approved by the adhesive manufacturer for bonding aluminum directly to concrete, exterior-grade plywood or metal is required.

Leave room for contraction and expansion of treads when taking measurements for depth and length.



Adhesive Options

Specify type of installation for correct screws. Premium-grade, exterior polyurethane construction adhesive required.



diamond landing tile

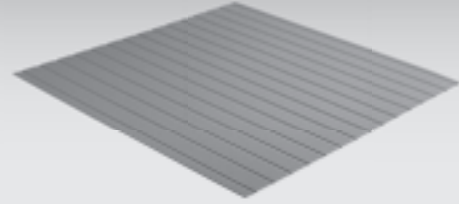
order prefix: **DSA**

GAUGE	3/16"
SIZE	27" x 27"
PIECES /CTN	6
WEIGHT /CTN (LB)	40.2
SQ. FT /CTN	30.37



Rubber risers, stringers, landing tiles, assurance detectable warning tile (ADWT) and other accessories make up the common denominators for use with FLEXCO® rubber stair treads.

- > Coordinating colors match rubber floor tiles, including Radial®, Radial® II, Radial® III, Weave and Square² textures, Evolving Styles®, and SpexTones®.
- > Diamond pattern landing tiles are available in Evolving Styles®, SpexTones® and FlexTones® colors to match our stair treads.



warning tile

order prefix: **ADWT**

GAUGE	1/8"	1/8"	1/8"
SIZE	12" x 12"	12" x 36"	36" x 36"
WEIGHT /CTN (LB)	50	60	60
SQ. FT /CTN	45	54	54



EnviroFlex™ product. May contribute to one or more LEED® credits.

Assurance detectable warning tile features deeply set, pre-grooved strips which can be "felt" through a cane or walking device to alert the visually impaired of approaching stairways.

- > Meets ANSI A117.1/705.3.3 for detectable warnings on walking surfaces.



warning tile colors



inserts + strips



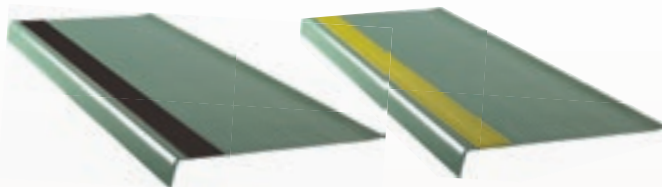
smooth + ribbed rubber inserts

FLEXCO® stair treads with smooth and ribbed inserts provide a tactile surface that's durable and easy to clean. In addition, the low-profile 2" strips are available in FlexTones® colors and 075 Canary for easy coordination with our wall base, tiles, risers, stringers and accessories.

- > Available in FlexTones® colors plus Canary Yellow.
- > Ideal for vinyl treads as well as all rubber tread in profiles.
- > Available to meet ADA requirements for contrasting color.
- > Canary smooth and ribbed inserts meet OSHA safety standards.
- > Meets California state standard code Title 24, Section 2-3306 (R).

smooth order prefix: **SVI**

ribbed order prefix: **RVI**



updated palette

abrasive strips

order prefix: **GRIT**

Rubber and vinyl stair treads with abrasive grit strips are available in Glow-in-the-Dark and other colors to meet OSHA, ADA, CA Title 24 and DIN requirements. The 3/4" strips for the 130 treads are available in black only and the 2" strips are available in all colors listed below.

- > Available to meet ADA requirements for contrasting color.
- > Yellow striping meets OSHA safety standards.
- > Glow-in-the-Dark luminescent safety strips meet DIN 67510.
- > Meets California state standard code Title 24, Section 2-3306 (R).

abrasive grit strip colors



Yellow Black Brown Glow-in-the-Dark White

Color selections must be made from actual samples.

smooth + ribbed rubber insert strip colors

