

ANGLE KNEE

Figure 9

The Figure 9 is used in supporting pipe hangers to the side of joist, steel, or wood beams. It can be either bolted or welded to the structure.

Material: Carbon Steel.

Finish: Plain, Painted, Electro-Galvanized, Hot-Dip Galvanized.

Compliance: A-A-1192A Type 34 and MSS-SP-69 Type 34.

Ordering: Specify size, figure number, and finish. For Metric applications specify Figure M9.

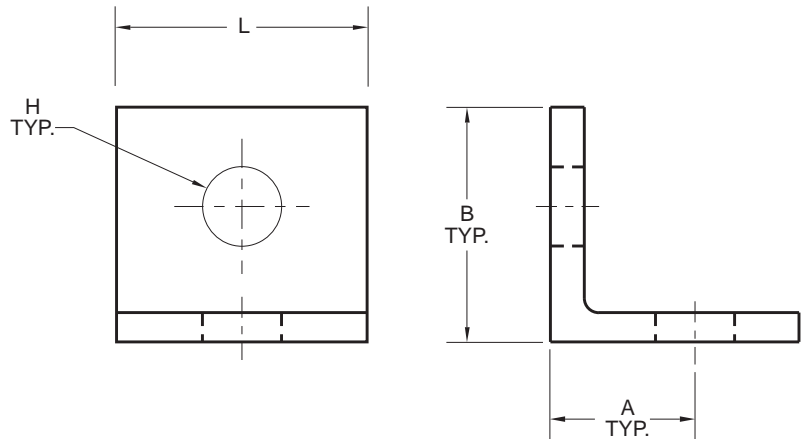


FIGURE 9 – ANGLE KNEE

SIZE	ROD SIZE	MAX. LOAD	A	B	H	L	WGT. EACH
A	3/8	150	1 1/2	2	7/16	2	0.53
A	M10	667	29	51	11	51	0.24
B	1/2	300	1 3/4	3	9/16	3	1.23
B	M12	1335	44	76	14	76	0.56
C	5/8	760	2 1/2	4	11/16	4	2.20
C	M16	3381	64	102	17	102	1.00

EXTENSION BAR

Figure 10

The Figure 10 is made of soft steel and can be easily cut with a cold chisel to any desired length, twisted, bent, or otherwise manipulated without breaking, yet retaining its strength.

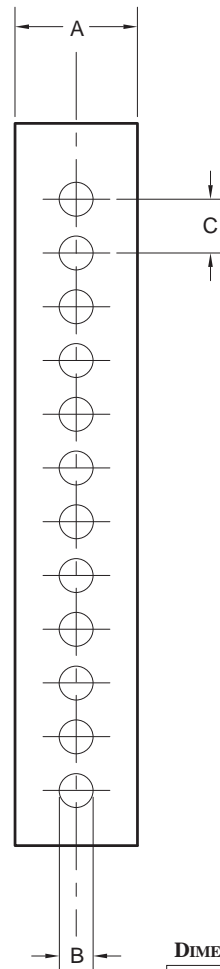
Furnished in ten, fifty, or one hundred foot rolls.

Finish: Plain.

Ordering: Specify size, length and figure number. For Metric applications specify Figure M10.

FIGURE 10 – EXTENSION BAR

SIZE	A	B	C	WEIGHT PER FT.
0	3/4	1/4	1/2	0.12
0	19	6	13	0.05
1	7/8	1/4	1/2	0.18
1	22	6	13	0.08
2	1	1/4	1/2	0.25
2	25	6	13	0.11



DIMENSIONS		TEMPERATURE	LOADS	WEIGHT
INCHES	FAHRENHEIT	POUNDS	POUNDS	
MILLIMETERS	CELSIUS	NEWTONS	KILOGRAMS	