



NEW

Composite Solutions

Composite Walls and Floors for
Truck Bodies and Delivery Vans

High Strength-to-Weight Composite Materials

Crane Composites wall and floor products are made from composite materials, offering high strength-to-weight characteristics for structural applications.

Light Weight Design

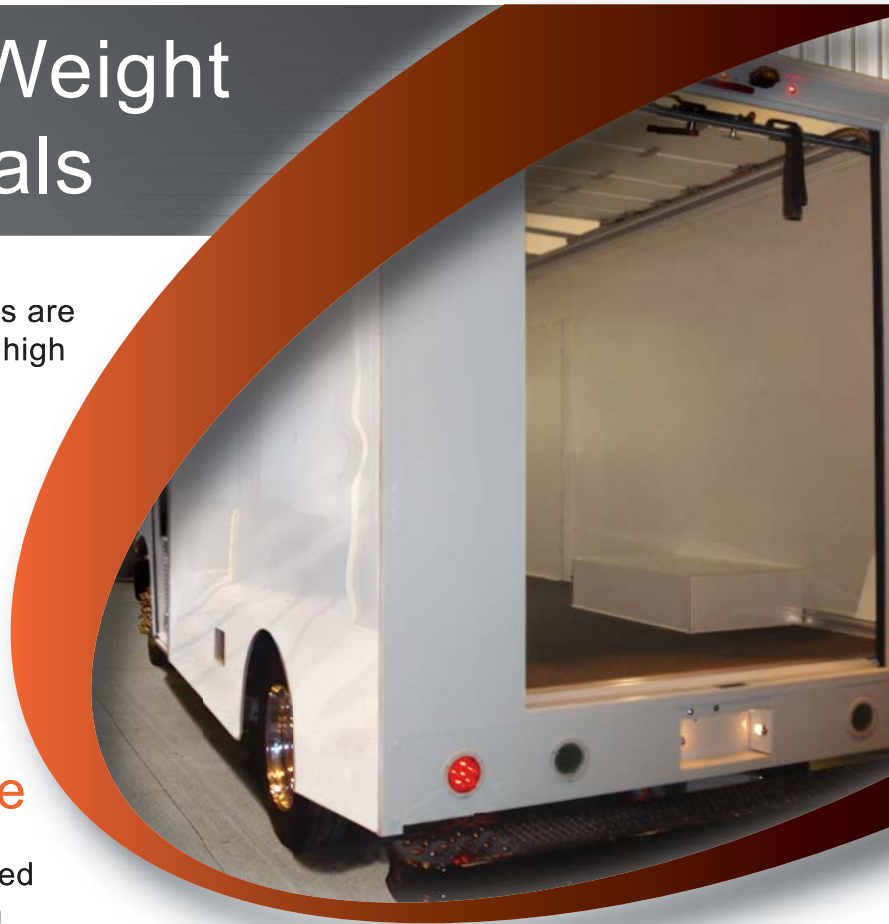
Weight reduction of 15%-50% over traditional materials results in improved fuel efficiency

Long Lasting Appearance

Composite Walls have a seamless automotive-like gel-coat finish for improved weathering performance that is corrosion and dent resistant

Developed and Tested to be Durable and Reliable

Highly-engineered by the Crane innovation team with over 1,000 units already in service



Composite Solutions

Composite Walls and Floors for
Truck Bodies and Delivery Vans

Crane Composites Applications

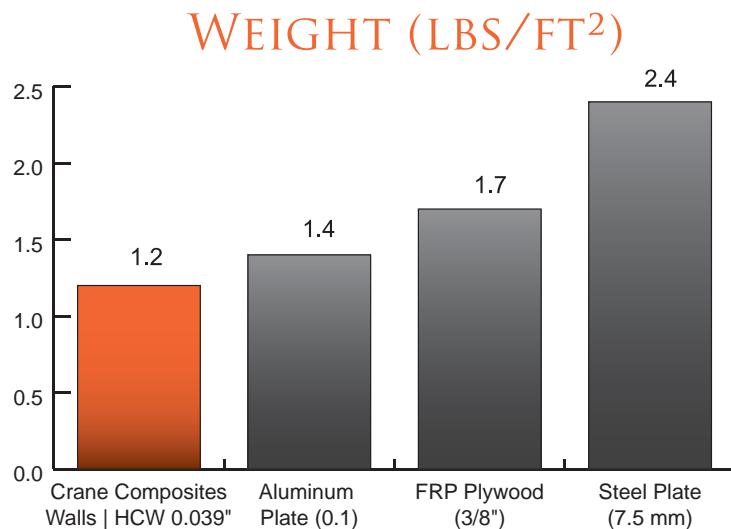
COMPOSITE FLOORS

The composite floor for stepvans and delivery vans utilizes an integrated core system to produce a lightweight yet effective load-bearing structure. It provides stiffness, insulative properties and weight savings compared to traditional materials such as aluminum.

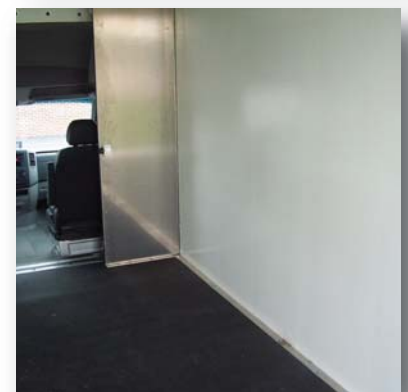


COMPOSITE WALLS

The composite wall is a wood-free panel that offers high strength-to-weight characteristics for structural applications. It is comprised of a high performance gel-coat, fiberglass reinforcement, and resins combined with a light-weight core. It provides stiffness, insulative properties, corrosion and dent resistance, and weight savings compared to traditional materials such as aluminum, steel, and wood.



Light Weight Composite Solution!



ADDITIONAL INFORMATION

Please visit our website at www.cranecomposites.com/transportation for additional Composite Solutions physical properties