

## iPad® Mobile Digital Device Solutions

iPad mobile digital devices are everywhere. What was once a novelty has become nearly as ubiquitous as the smart phone. The FSR mounting devices offer practical solutions within a House of Worship.

iPads are used outside of rooms to announce the event being held within, visual paging for parents, point of purchase workstations, and more. These fixed installations require mounting solutions that can securely hold the iPad in place, protect it from damage and theft, provide power, and if necessary, limit user access to such things as the Home Button.

FSR has a full line of enclosures for the iPad2, New iPad and iPad Mini for both the table and wall. These enclosures are sleek, elegant and durable. They are designed to meet the needs of constant daily use.

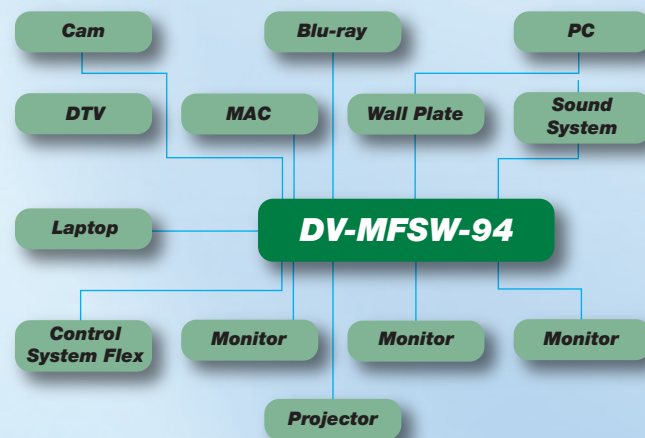


## Universal Technology Solutions

New technology is great, but introducing new technology does not mean that we immediately get rid of all of our old technology. This is especially true with video systems.

New computers have HDMI outputs, older ones do not. BluRay players have HDMI ports and can play DVD's but recorded material may be on other formats. Video cameras, from personal hand-helds to studio production units have a variety of video outputs. Displays are just as tricky with different native resolutions, video formats and aspect ratios.

The DV-MFSW-94 is the perfect solution to make all of these pieces work together. It has 9 inputs that can accept composite, component, computer, HDMI and DVI, and 4 outputs that support DVI and HDMI. Each output can be set to a different resolution, color space, and aspect ratio to support nearly any type of display.



244 Bergen Boulevard  
Woodland Park, NJ 07424  
800.332.FSR1 · 973.785.4347 · F: 973.785.3318  
W: [fsrinc.com](http://fsrinc.com) · E: [sales@fsrinc.com](mailto:sales@fsrinc.com) LIT1311B

© 2013 FSR, Inc. All Rights Reserved.

© iPad is a registered trademark of Apple Inc., registered in the US and other countries. The products contained on these pages are not endorsed by or affiliated with Apple Inc.



## Solutions for the House of Worship

Technology has become an integral part of our everyday lives. Our homes, offices and cars are multi-core multimedia masterpieces that influence how we see and feel about the world around us. This is equally true in the House of Worship.

Houses of Worship use technology to teach, motivate and inspire. Image magnification allows every attendee to view the pastor as if they were sitting in the front row. Scripture and notes are presented to emphasize and draw attention to key elements of the message while videos of recent mission trips inspire more volunteers and generosity.

It takes a great deal of care to make technology a collaborative tool rather than a focus of attention. FSR helps make this possible with a vast array of products designed to let technology seamlessly blend into the surrounding rather than becoming a focal point.

The following pages contain a mere fraction of what FSR manufactures. This brochure is intended to offer a starting point from which an entire solution can be created.

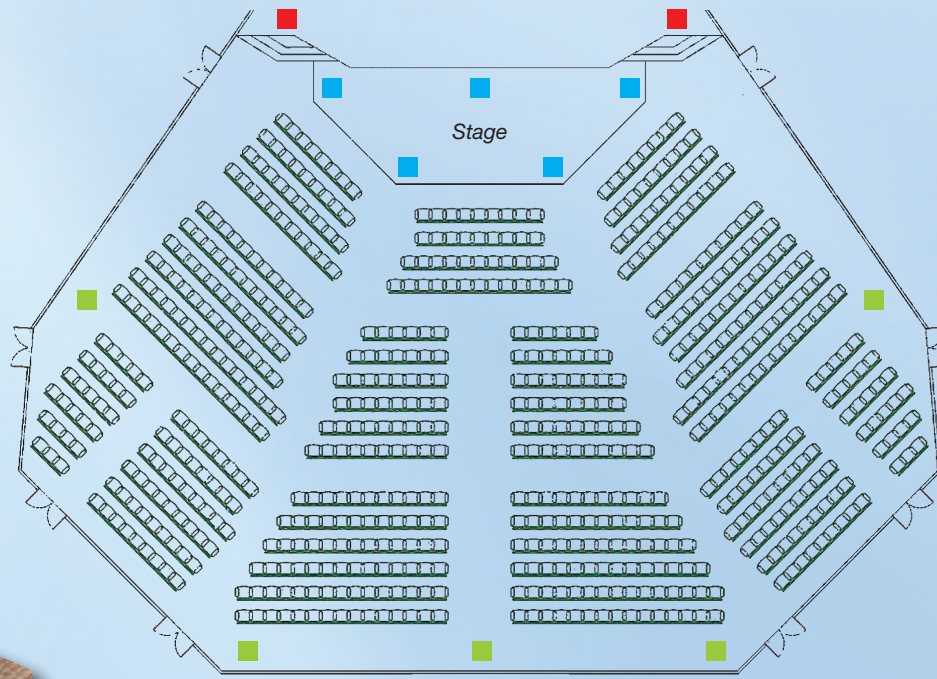


# In the Main Auditorium

## Stage Boxes

The goal is to have a stage as free of cables and clutter as possible. Wireless microphones handle vocals, but instruments, especially those with effects packs, still need places to plug into.

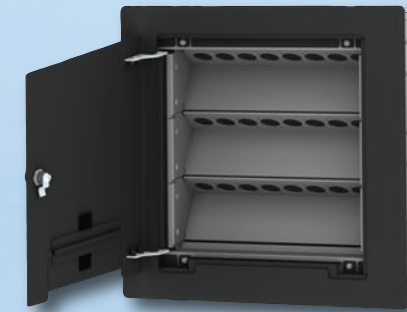
Stage boxes provide locations to plug-in power as well as audio. They can also be used to provide power and DMX connections in locations where intelligent lights are needed for a specific event or series.



## Wall Boxes

Wall boxes can be placed backstage and provide audio, video, data, power and DMX connections.

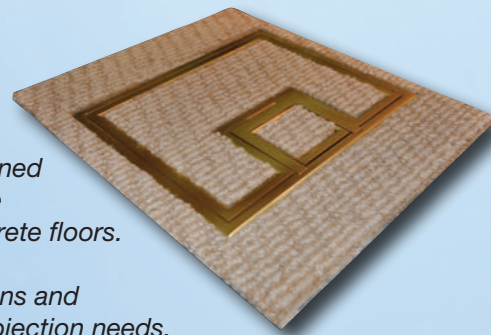
They provide higher density connections than a stage box and since they are on a wall backstage, they are invisible to the audience.



## Floor Boxes

Floor boxes are a little different from stage boxes. First, the cover can be filled with tile, wood, or carpeting in order to provide a very refined appearance. They are also larger than their stage counterpart, and can be poured in place in concrete floors.

Floor boxes are perfect for use at camera locations and locations that may have temporary lighting or projection needs.



## Digital Ribbon

Getting high definition video from point A to point B isn't always as easy as it may seem. The most common signal format is HDMI which has a difficult time traveling more than 35' unassisted.

These plenum rated HDMI extender cables are small and rugged, making them perfect for runs within the building.



# Across the Campus

## Flex Control Systems

Most events held at Houses of Worship are run with the help of volunteer operators. These operators can be nervous about taking control of a complicated system. The Flex Control System solves this issue and many more.

Flex is an easy to use touchscreen control system giving the user complete control over nearly every aspect of a room with the touch of a finger. Flex can control the lighting, shades and drapes, projection screen, the source being displayed, volume and much more. Flex can automatically perform functions such as turning on and off projectors, displays and lighting when not in use.

Flex control puts your volunteers at ease.



## Informational Displays

Informational Displays are an integral part of most Houses of Worship. They carry reminders and updates of upcoming activities, service schedules, clips of prior services, and more.

Whether these displays are mounted on the wall or suspended from the ceiling, one thing is for certain, there are power and signal cables that have to be plugged in. It is likely that there is also a "black box" of some sort required to display the content. Keeping these cables and "black boxes" out of site is important to maintain the aesthetic appearance of the space.

FSR offers a full line of PWB wall boxes for wall mount applications and the CB Series Ceiling boxes. Both offer power connections, space for extra cable and ample room for "black boxes".



## IPS

While every effort is taken to minimize the aesthetic impact of technology within a space, there will always be a need to have connection points on walls. For example, the family viewing room that holds a men's study group on Tuesday nights. There needs to be a place to plug in a local laptop, DVD or BluRay player.

IPS (Intelligent Plate Solutions) is the solution for room connectivity. Not only can these wall plates be custom configured at the time of purchase, they can be changed anytime throughout their life to meet the changing needs of the space.

IPS is a system of wall plates and interchangeable connector inserts. Made of aircraft aluminum and steel, IPS plates are extremely rugged while maintaining an attractive appearance. They carry a lifetime warranty.

