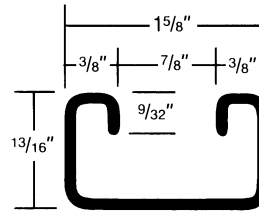
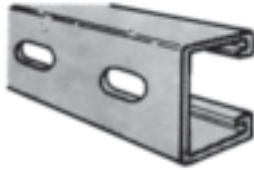


STAINLESS STEEL CHANNEL/M-164SS



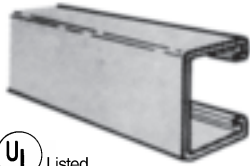
1 3/16" x 1 5/8" x 1 3/16"
14 Gauge Channel
wt./100 ft. - 103#

Stocked in type 304 and 316
grade Stainless Steel in 10 & 20
ft. lengths.



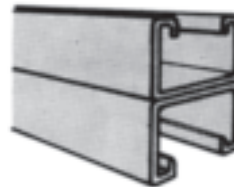
M-164SS-OS

1 3/16" x 1 5/8" x 1 3/16" x 14GA 9/16"
x 1 1/8" Slot;
2" on Centers



M-164SS-KO

1 3/16" x 1 5/8" x 1 3/16" x 14GA



M-164SS-A

1 5/8" x 1 5/8" x 1 5/8" x 14GA
Back to Back

*Other welded combinations
available upon request

PROPERTIES OF SECTION

Figure Number	Wt./Ft. Lbs.	Area of Section Sq. in.	X-X Axis			Y-Y Axis		
			Ix in. ⁴	Sx in ³	Rx in.	Iy in. ⁴	Sy in ³	Ry in.
M-164SS	1.03	0.286	0.025	0.053	0.298	0.106	0.131	0.610
M-164SS-A	2.06	0.571	0.115	0.149	0.449	0.213	0.2619	0.610

ALLOWABLE COLUMN LOADS (LBS.)

Figure Number	UNSUPPORTED HEIGHT OF COLUMN IN INCHES												
	12"	18"	24"	30"	36"	42"	48"	60"	72"	84"	96"	108"	120"
M-164SS	3710	3487	3175	2773	2282	1729	1324	847	588	432	331	261	212
M-164SS-A 1	7620	7424	7148	6795	6362	5851	5261	3847	2671	1963	1503	1187	962

ALLOWABLE BEAM LOADS (LBS.)

Figure Number	Notes	SPAN IN INCHES												
		12"	18"	24"	30"	36"	42"	48"	60"	72"	84"	96"	108"	120"
M-164SS	1	888	592	444	355	296	254	222	178	148	127	111	99	89
	2	-	-	416	266	185	136	104	67	46	34	26	21	17
	3	0.027	0.060	0.107	0.167	0.240	0.327	0.427	0.667	0.960	1.307	1.708	2.161	2.668
M-164SS-A	1	2478	1652	1239	991	826	708	619	496	413	354	310	275	248
	2	-	-	-	-	-	617	472	302	210	154	118	93	76
	3	0.016	0.037	0.066	0.102	0.148	0.201	0.262	0.410	0.590	0.804	1.050	1.328	1.640

NOTES:

- I. All Figures show the Load in Lbs.
- II. Line 1 shows the Allowable Uniform Beam Load based on calculations using 25000 psi Stress.
- III. Line 2 shows the Allowable Uniform Load at Maximum Deflection = 1/240 of Span.
- IV. Line 3 shows Beam Deflection in inches.