

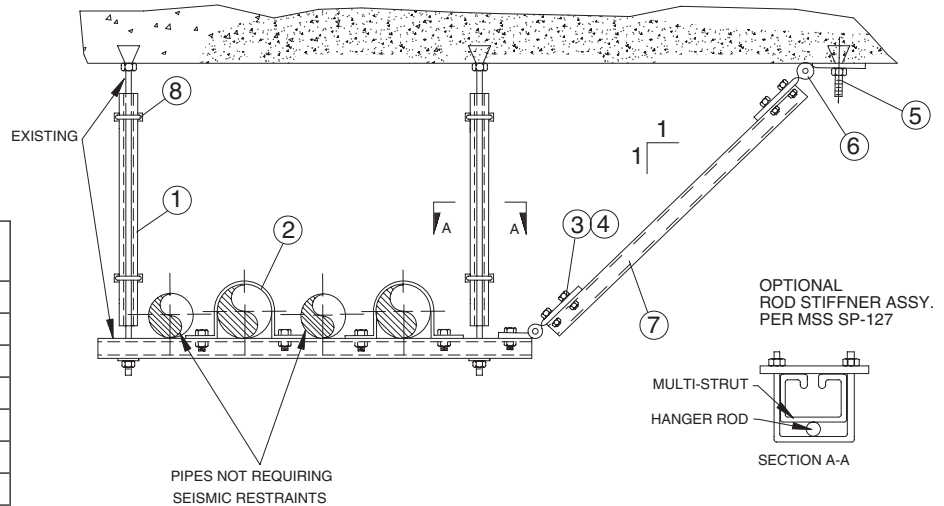
# MULTI-STRUT®

## SEISMIC BRACING

### DETAIL SR-11

Item No.	No. Req'd.	Fig No. Part No.	Description
1	2	M132	Multi-Strut Channel
2	2	C1108	Pipe Strap*
3	9	BLT	Hex Head Cap Screw
4	9	SN	Strut Nut
5	1	KB	Wedge Anchor*
6	2	SH300	Seismic Angle
7	1	MXXX	Multi-Strut Channel*
8	4	SAC	Seismic Clamp

\*Size based upon application.



### DETAIL SR-12

Item No.	No. Req'd.	Fig No. Part No.	Description
1	2	BLT	Hex Head Cap Screw
2	2	SN	Strut Nut
3	1	KB	Wedge Anchor*
4	1	SH300	Seismic Bracket
5	1	MXXX	Multi-Strut Channel*
6	1	C1108	Pipe Strap*

\*Size based upon application.

