

## FEMALE CEILING MOUNT BOLT

Figure 104F

The Figure 104F is designed for rod attachment directly into the ceiling from overhead poured concrete. Loads are based upon 3500 psi concrete and 80 psi bond stress.

**Material:** Carbon Steel, Stainless Steel.

**Finish:** Plain, Electro-Galvanized.

**Ordering:** Specify rod size, figure number, and finish. For Metric applications specify Figure M104F.

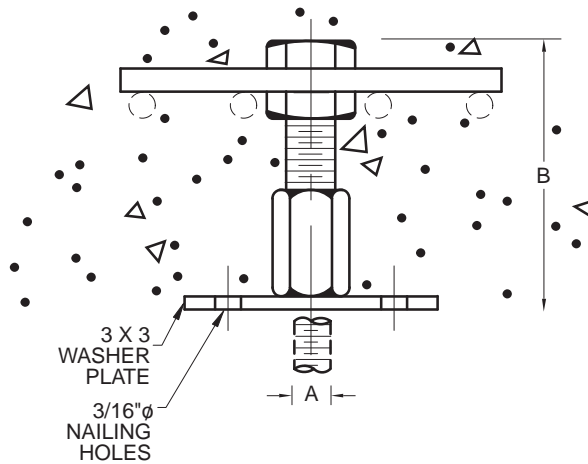


FIGURE 104F – FEMALE CEILING MOUNT BOLT

ROD SIZE A	MAX LOAD	B	WEIGHT EACH
3/8	610	4 1/2	0.80
M10	2714	105	0.36
1/2	1130	4 1/4	0.93
M12	5027	108	0.42
5/8	1810	4 5/8	1.56
M16	8052	125	0.71
3/4	2710	5 1/8	2.37
M20	12055	130	1.08
7/8	3770	6	3.55
M22	16770	152	1.61
1	4960	6 1/8	4.08
M24	22064	154	1.85
1 1/4	8000	7 3/8	7.30
M30	35587	187	3.31
1 1/2	11630	8 3/4	10.18
M36	51735	222	4.62

NOTE: Spacing of these items should not be less than twice Dimension B from the centerline.

Minimum distance from centerline to the edge of the concrete is Dimension B

## MALE CEILING MOUNT BOLT

Figure 104M

The Figure 104M is designed for rod attachment using a rod coupling like our Figure 123 from overhead poured concrete ceilings. Loads are based upon 3500 psi concrete and 80 psi bond stress.

**Material:** Carbon Steel, Stainless Steel.

**Finish:** Plain, Electro-Galvanized.

**Ordering:** Specify rod size, figure number, and finish. For Metric applications specify Figure M104M.

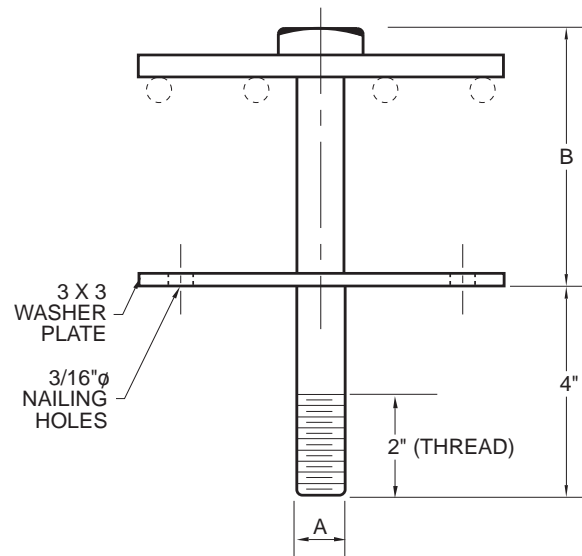


FIGURE 104M – MALE CEILING MOUNT BOLT

ROD SIZE A	MAX LOAD	B	WEIGHT EACH
3/8	610	4 1/2	0.90
M10	2714	114	0.41
1/2	1080	4 3/4	1.15
M12	4804	117	0.52
5/8	1600	5 1/8	1.91
M16	7117	143	0.87
3/4	1900	5 3/4	2.88
M20	8452	146	1.31
7/8	2500	6 1/4	4.15
M22	11121	171	1.88
1	2800	7	4.98
M24	12456	178	2.26
1 1/4	3700	8 1/4	8.04
M30	16459	210	3.65

NOTE: Spacing of these items should not be less than twice Dimension B from the centerline.

Minimum distance from centerline to the edge of the concrete is Dimension B

DIMENSIONS		TEMPERATURE	LOADS	WEIGHT
INCHES	MILLIMETERS	FAHRENHEIT	POUNDS	POUNDS
		CELSIUS	NEWTONS	KILOGRAMS