

RETURN LINE OFFSET HOOK

Figure 227

Designed to support light duty pipe lines with clearance requirements that run along walls or beams.

Material: Carbon Steel.

Finish: Plain, Painted, Electro-Galvanized, Hot-Dip Galv.

Ordering: Specify pipe size, and figure number. For Metric applications specify Figure M227.

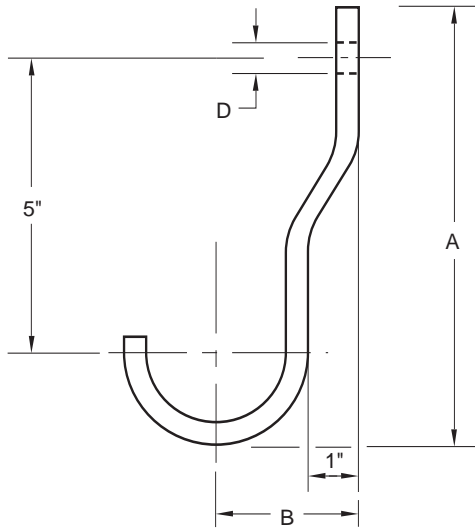


FIGURE 227 – RETURN LINE OFFSET HOOK

PIPE SIZE	MAX LOAD	A	B	D	WGT EACH
½	200	6 ⁵ / ₃₂	1 ⁵ / ₈	¹ / ₁₆	0.53
15	890	160	41	14	0.24
¾	200	6 ¹ / ₈	1 ¹¹ / ₁₆	¹ / ₁₆	0.55
20	890	156	43	14	0.25
1	200	6 ⁹ / ₁₆	1 ⁷ / ₈	¹ / ₁₆	0.81
25	890	167	48	14	0.37
1¼	200	6 ⁵ / ₈	2 ¹ / ₁₆	¹ / ₁₆	0.84
32	890	168	52	14	0.38
1½	200	6 ¹¹ / ₁₆	2 ³ / ₁₆	¹ / ₁₆	0.89
40	890	170	56	14	0.40
2	200	7 ³ / ₃₂	2 ⁵ / ₈	¹ / ₁₆	0.96
50	890	4315	67	14	0.44
2½	350	7 ¹⁵ / ₃₂	2 ¹¹ / ₁₆	¹ / ₁₆	1.26
65	1557	190	68	14	0.57
3	350	7 ⁷ / ₈	3	¹ / ₁₆	1.38
80	1557	194	76	14	0.63
3½	350	8 ¹ / ₃₂	3 ¹ / ₄	¹ / ₁₆	1.47
90	1557	204	83	14	0.67
4	450	8 ⁵ / ₁₆	3 ³ / ₈	¹ / ₁₆	2.39
100	2002	217	92	14	1.08
5	450	9	4 ³ / ₁₆	¹ / ₁₆	3.90
125	2002	229	106	14	1.77
6	450	9 ³ / ₈	4 ¹¹ / ₁₆	¹ / ₁₆	4.25
150	2002	238	119	14	1.93

RETURN LINE HOOK

Figure 227S

Designed to support light duty pipe lines that run next to walls or beams.

Material: Carbon Steel.

Finish: Plain, Painted, Electro-Galvanized, Hot-Dip Galvanized.

Ordering: Specify pipe size, and figure number. For Metric applications specify Figure M227S.

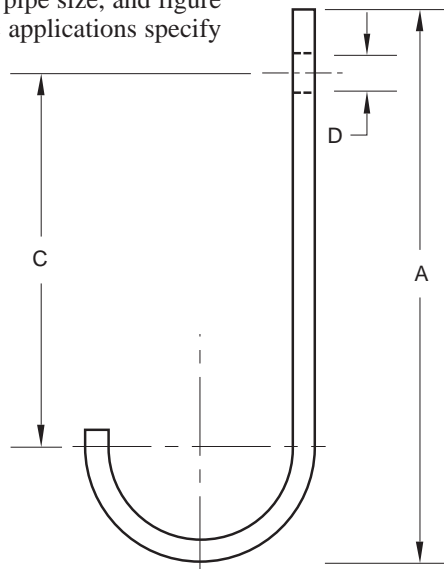


FIGURE 227S – RETURN LINE HOOK

PIPE SIZE	MAX LOAD	A	C	D	WGT EACH
½	200	6 ⁵ / ₃₂	5	¹ / ₁₆	0.51
15	890	160	127	14	0.23
¾	200	6 ¹ / ₈	5	¹ / ₁₆	0.53
20	890	156	127	14	0.24
1	200	6 ⁹ / ₁₆	5	¹ / ₁₆	0.80
25	890	167	127	14	0.36
1¼	200	6 ⁵ / ₈	5	¹ / ₁₆	0.83
32	890	168	127	14	0.38
1½	200	6 ¹¹ / ₁₆	5	¹ / ₁₆	0.87
40	890	170	127	14	0.39
2	200	7 ³ / ₃₂	5	¹ / ₁₆	0.93
50	890	4315	127	14	0.42
2½	350	7 ¹⁵ / ₃₂	5	¹ / ₁₆	1.16
65	1557	190	127	14	0.53
3	350	7 ⁷ / ₈	5	¹ / ₁₆	1.27
80	1557	194	127	14	0.58
3½	350	8 ¹ / ₃₂	5	¹ / ₁₆	1.37
90	1557	204	127	14	0.62
4	350	8 ⁵ / ₁₆	5	¹ / ₁₆	2.19
100	1557	217	127	14	0.99
5	450	9	5	¹ / ₁₆	3.50
125	2002	229	127	14	1.59
6	450	9 ³ / ₈	5	¹ / ₁₆	4.15
150	2002	238	127	14	1.88

DIMENSIONS		TEMPERATURE	LOADS	WEIGHT
INCHES	FAHRENHEIT		POUNDS	POUNDS
MILLIMETERS	CELSIUS		NEWTONS	KILOGRAMS