

ADJUSTABLE SIDE BEAM CLAMP

Figure 217

The Figure 217 is designed to attach mechanically to a steel beam and allow a drop rod to be placed at or near the edge of the beam. Various beam flange widths and thicknesses can be accommodated.

Material: Carbon Steel.

Compliance: MSS-SP-69 Type 25.

Finish: Plain, Painted, Electro-Galvanized, Hot-Dip Galv.

Ordering: Specify size, figure number, and type. For Metric applications specify Figure M217.

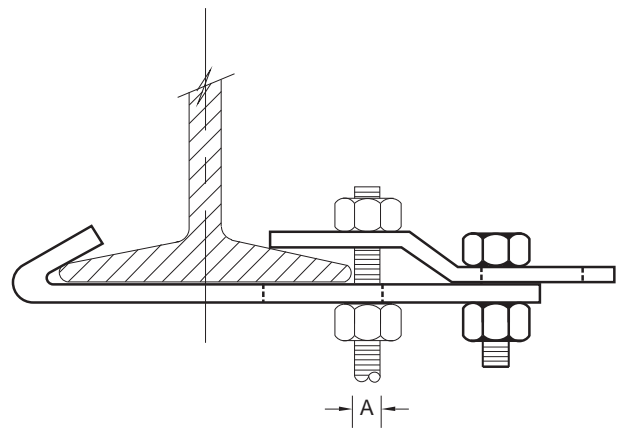


FIGURE 217 – ADJUSTABLE SIDE BEAM CLAMP

TYPE 1	A	MAXIMUM LOAD	MAXIMUM FLANGE THICKNESS	FLANGE WIDTH	WEIGHT EACH
Size 3	3/8	300	3/8	3 - 4 1/2	0.80
Size 76	M10	1335	M10	76 - 114	0.36
Size 4 3/8	3/8	300	3/8	4 3/8 - 6	1.06
Size 117	M10	1335	M10	117 - 152	0.48
Size 6 1/8	3/8	300	3/8	6 1/8 - 7 1/2	1.17
Size 156	M10	1335	M10	156 - 191	0.53
Size 7 3/8	3/8	300	3/8	7 3/8 - 9	1.28
Size 194	M10	1335	M10	194 - 229	0.58
TYPE 2					
Size 3	1/2	500	1/2	3 - 4 1/2	1.57
Size 76	M12	2224	M12	76 - 114	0.71
Size 4 3/8	1/2	500	1/2	4 3/8 - 6	1.84
Size 117	M12	2224	M12	117 - 152	0.83
Size 6 1/8	1/2	500	1/2	6 1/8 - 7 1/2	2.05
Size 156	M12	2224	M12	156 - 191	0.93
Size 7 3/8	1/2	500	1/2	7 3/8 - 9	2.23
Size 194	M12	2224	M12	194 - 229	1.01
TYPE 3					
Size 3	3/4	700	3/4	3 - 4 1/2	3.75
Size 76	M16	3114	M16	76 - 114	1.70
Size 4 3/8	3/4	700	3/4	4 3/8 - 6	4.19
Size 117	M16	3114	M16	117 - 152	1.90
Size 6 1/8	3/4	700	3/4	6 1/8 - 7 1/2	4.53
Size 156	M16	3114	M16	156 - 191	2.05
Size 7 3/8	3/4	700	3/4	7 3/8 - 9	5.11
Size 194	M16	3114	M16	194 - 229	2.32

DIMENSIONS		TEMPERATURE	LOADS	WEIGHT
INCHES	FAHRENHEIT	POUNDS	POUNDS	
MILLIMETERS	CELSIUS	NEWTONS	KILOGRAMS	