

BEAM CLAMP WITH SWING NUT

Figure 702

Identical in design to the Figure 15 Beam Clamp, the Figure 702 comes with the addition of a right-hand tapped swing nut.

Compliance: Federal Specification A-A-1192A Type 21, MSS SP-69 Type 21.

Material: Carbon Steel.

Finish: Plain, Painted, Electro-Galvanized, Hot-Dip Galvanized.

Ordering: Specify figure number, width of beam, thickness of flange, and type Number of clamp. For Metric applications specify Figure M702.

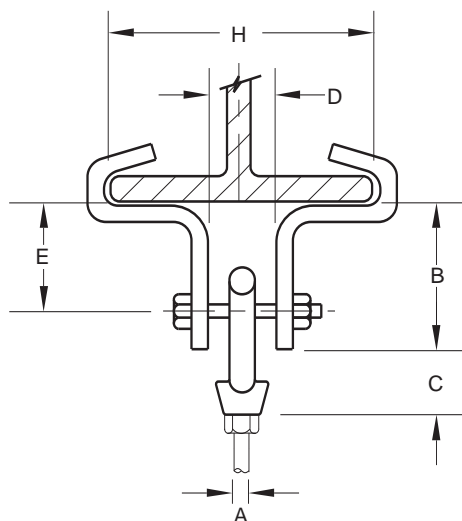


FIGURE 702 – BEAM CLAMP WITH SWING NUT

TYPE NUMBER	MAXIMUM LOAD	A	B	C	D	E
1	500	3/8	1 1/8	3/4	5/8	1
1	2224	M10	41	19	16	25
2	1000	1/2	1 1/4	1	3/4	1 1/2
2	4448	M12	44	25	19	29
3	1500	5/8	2	1 1/4	7/8	1 1/4
3	6673	M16	51	32	22	32
4	2000	3/4	2 3/8	1 1/2	1	1 3/8
4	8897	M20	60	38	25	35
5	3000	7/8	2 3/4	1 3/4	1 1/4	1 3/8
5	13345	M20	67	44	32	41
6	3250	1	3 1/4	2	1 1/4	1 3/4
6	14457	M24	83	51	32	44

TYPE NUMBER	WEIGHT EACH DIMENSION H								
	3	4	5	6	7	8	9	10	12
1	0.69	0.79	0.90	0.95	1.15	1.30			
1	0.31	0.36	0.41	0.43	0.52	0.59			
2	1.13	1.25	1.41	1.50	1.64	1.73	1.83	1.93	
2	0.51	0.57	0.64	0.68	0.74	0.78	0.83	0.88	
3		2.44	2.67	2.84	3.06	3.28	3.40	3.58	
3		1.11	1.21	1.29	1.39	1.49	1.54	1.62	
4		3.67	4.00	4.21	4.58	4.80	5.07	5.27	
4		1.66	1.81	1.91	2.08	2.18	2.30	2.39	
5			5.83	6.11	6.43	6.81	7.17	7.46	8.23
5			2.64	2.77	2.92	3.09	3.25	3.38	3.73
6			9.55	9.97	10.61	11.104	11.57	12.00	13.19
6			4.33	4.52	4.81	5.04	5.25	5.44	5.98

DIMENSIONS		TEMPERATURE	LOADS	WEIGHT
INCHES	FAHRENHEIT	POUNDS	POUNDS	
MILLIMETERS	CELSIUS	NEWTONS	KILOGRAMS	