

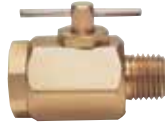
COMMERCIAL PRODUCTS CATALOG

Instrumentation Valves

78-260/290 SERIES

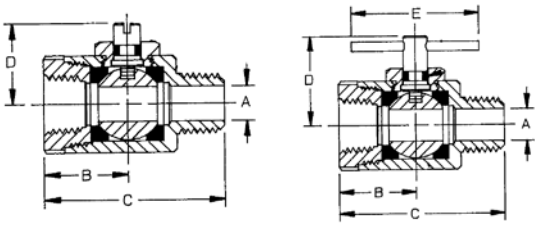


78-290: Bronze

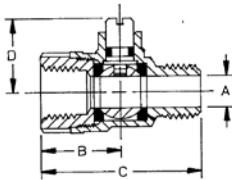


78-290: Bronze

Brass Valves



Bronze Valves



BRASS AND BRONZE INSTRUMENTATION BALL VALVES

Male x Female threaded. 400 psig CWP, non-shock. Air and liquid service.

FEATURES

- Micro-finish ball
- Blowout-proof stem design
- PTFE seats
- Nitrile stem seal
- Plated steel tee handle
- Compact design
- Optional mixed end fittings available

BRASS INSTRUMENTATION BALL VALVE - TEE HANDLE

Model Number	Size (in.)	Dimensions (in.)					Cv*	Wt.
		A	B	C	D	E		
78-260-05	1/8M x 1/8F	0.21	0.37	1.43	0.87	1.25	4.00	0.20
78-261-05	1/4M x 1/4F	0.31	0.43	1.43	0.87	1.25	5.50	0.19

BRASS INSTRUMENTATION BALL VALVE - SCREW SLOT

Model Number	Size (in.)	Dimensions (in.)					Cv*	Wt.
		A	B	C	D	E		
78-262-05	1/8M X 1/8F	0.21	0.37	1.43	0.75	N/A	4.00	0.20
78-263-05	1/4M X 1/4F	0.31	0.43	1.43	0.75	N/A	5.50	0.19

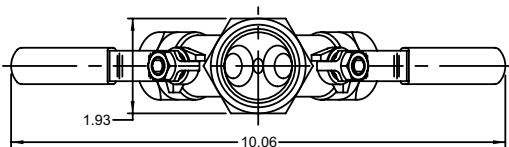
BRONZE INSTRUMENTATION BALL VALVE (INTERNATIONAL) - SCREW SLOT

Model Number	Size (in.)	Dimensions (in.)					Cv*	Wt.
		A	B	C	D	E		
78-290-01	1/8M x 1/4F	0.21	0.80	1.60	0.72	N/A	4.00	0.19
78-291-01	1/4M x 1/4F	0.31	0.80	1.60	0.72	N/A	5.50	0.19
78-292-01	1/8 x 1/4 SAE	0.21	0.80	1.60	0.72	N/A	4.00	0.19
78-293-01	1/4 x 1/4 SAE	0.31	0.80	1.60	0.72	N/A	5.50	0.19

* The Cv factor is the gallons of water per minute that the valve will pass with a 1 psig pressure drop.

Specialty Valves

78-274-01 SERIES



DUAL WYE AUTO DRAIN BALL VALVE

Dual action modular valve, ideal for compressor applications where safety exhaust may be needed for two air lines at once.

FEATURES

- 1-1/4" FNPT Inlet x (2) 3/4" FNPT outlets
- 600 CWP
- ASTM B584 Bronze

