

# COMMERCIAL PRODUCTS CATALOG

## Ball Valve with Direct ISO Mounting

### 77D SERIES

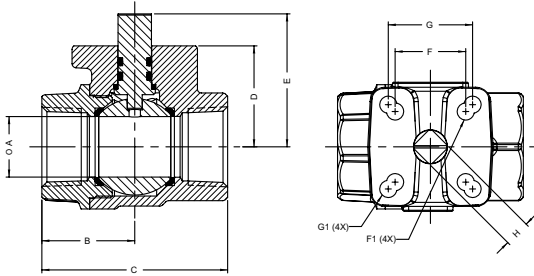


### FULL PORT BRONZE BALL VALVE WITH DIRECT ISO MOUNTING PAD

Apollo's solid stainless steel ball design in a bronze valve with an integral ISO 5211 mounting pad with 100% American construction

#### FEATURES

- 600 CWP pressure rating
- Multi-fill seats and stem bearing
- Blowout-proof stem design
- Vacuum service to 29 in. Hg
- High cycle dual o-ring stem seal design (EPDM is standard)
- Ball is slot vented to equalize cavity and line pressure
- MSS SP-110 compliant
- Actuator ready



Suffix	Material	Temp Range	Steam (max)
-01E (std)	EPDM	-20 to 400°F	150 SWP @ 366°F
-01N	Nitrile	-20 to 250°F	15 SWP @ 250°F
-01V	Viton	-20 to 400°F	50 SWP @ 297°F

Model Number	Size (in.)	Dimensions (in.)									
		A	B	C	D	E	F	ØF1	G	ØG1	H
77D-143-01E	1/2	0.50	1.15	2.25	1.00	1.37	0.997	0.224	1.167	0.281	0.275
77D-144-01E	3/4	0.75	1.33	2.65	1.38	1.79	1.167	0.281	1.392	0.281	0.275
77D-145-01E	1	1.00	1.54	3.07	1.67	2.20	1.167	0.281	1.392	0.281	0.430
77D-147-01E	1-1/2	1.50	2.12	4.23	2.31	3.05	N/A	N/A	1.949	0.344	0.551
77D-148-01E	2	2.00	2.43	4.85	2.68	3.43	N/A	N/A	1.949	0.344	0.551

## Gas/Fuel Shut-Off Valves

### 77G-UL SERIES



### FULL PORT CSA & UL GAS SHUT-OFF VALVES

UL and CSA listed fuel shut off valve that features a durable bronze body, premium "multi-fill" MPTFE seats and stem packing, and a "Solid Ball" design that delivers true full port flow performance.

#### FEATURES

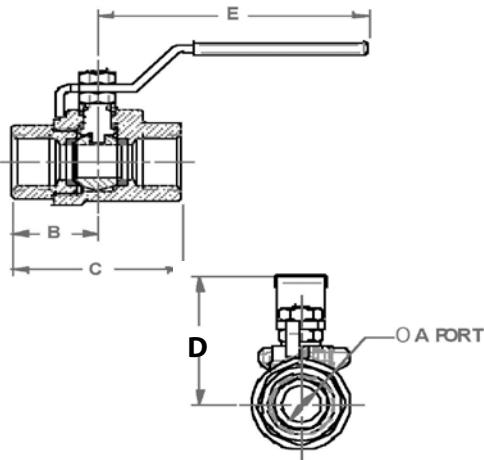
- Blowout-proof stem design
- ASTM B584 Bronze
- Maximum body pressure: 600 psig CWP
- CSA Rating: 125 psig
- CSA Rating: -20°F to 150°F
- UL Rating: 250 psig max @ 125°F
- MSS SP-110 ball valves
- CSA to ASME B16.33, 125
- CGA 3.16-M88, 125

#### UL LISTED

MHKZ  
YSDT  
YQNZ  
YRBX  
YRPV

#### UL LISTED

YRPV7  
YRBX7  
MHKZ7  
YSDT7



Model Number	Size (in.)	Dimensions (in.)					Wt.
		A	B	C	D	E	
77G-103-UL	1/2	0.50	1.19	2.35	1.80	3.74	0.68
77G-104-UL	3/4	0.75	1.42	2.74	1.98	4.78	1.26
77G-105-UL	1	1.00	1.64	3.18	2.18	4.78	2.08