



# 2015 Service Seminars for Washer-Extractors



60044 SR2



30022 T6X



36026 X8R



68036 H5K



MWR18E4



30022 V8Z

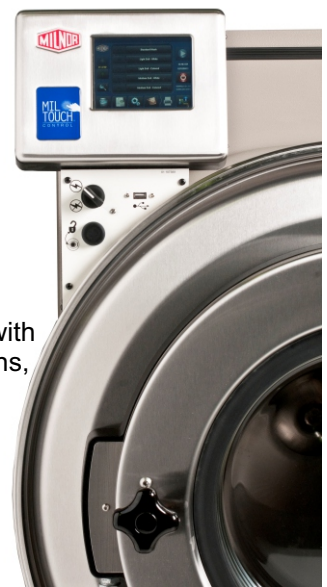
**Seminar #1**  
**March 3 - 6, 2015**  
**New Orleans, Louisiana**  
**(Washer-Extractors from 20-700 lbs.**  
**capacity)**  
Rigid-mount, Suspended, Large Open-Pocket,  
Divided Cylinder

# Seminar #1 March 3 - 6, 2015

## (Washer-Extractors)

These seminars are condensed into four days, with courses covering a broad range of Milnor washer-extractors. The courses are designed to train personnel in the rapid and accurate diagnosis and repair of field problems. Also, the attendees will gain an overall understanding of how the equipment operates.

These seminars address Milnor washer-extractors ranging in capacity from 20 pounds to 700 pounds, including divided-cylinders and open-pocket designs with microprocessor controls.



## Who Should Attend?

Any field service, maintenance, plant engineer, operations or management personnel who deal with maintaining, repairing, and operating Milnor washer-extractors in the course of their daily functions, and want to improve their understanding of the equipment.

The course devotes a great deal of time to troubleshooting of electrical controls. Mechanical, pneumatic and hydraulic systems are covered as well.

### Day 1

The Seminar begins with the design parameters of a washer-extractor, followed by Troubleshooting Procedures. We will understand machine model and serial numbers and discuss proper loading and load size determination of the machines. The fundamentals of wash chemistry will be discussed, as well as how it applies to programming a wash formula. We will also review corrosion on metals and what steps can be taken to prevent, minimize, or correct corrosion due to chemistry on metals. We will then begin discussing the different Milnor Controllers including operation, programming, and built in troubleshooting capabilities. These controllers include the System 7, E-P One Touch<sup>®</sup>, E-P Express<sup>®</sup>, E-P Plus<sup>®</sup>, Mark II-V and Mark VI<sup>®</sup>, MilTouch<sup>™</sup>, MilTouch-EX<sup>™</sup> and Coin Controllers.

### Day 2

The seminar continues with the Milnor Controllers. Simulators are available to the class to practice programming the various controllers. We will also discuss Data Backup Protection Strategies. Wiring Diagrams will be covered in depth. We will begin discussing the mechanical assemblies typically found on Milnor models, with an emphasis on preventative maintenance. These include: operation of balancing systems to protect the machine against out of balance conditions; various types of water and steam valves utilized; pneumatic systems and schematics; hydraulic applications and schematics; various types of suspension components found on Milnor machines; chemical connections to the machine; various drive systems including single motor drives with inverters, and multi-motor drives, the use of Auto-Spot<sup>™</sup>; lastly the various types of drain valves employed.

### Day 3

A factory tour will take place in the morning. We will continue discussing the mechanical assemblies used on Milnor machines.

### Day 4

The last day of the seminar will cover Troubleshooting practices and techniques including an understanding of inverters. We will discuss Preventative Maintenance requirements of Milnor machines and how to determine what they are. We will stress safety while working with industrial Milnor washer-extractors. We will focus on installation techniques of machinery, and common mistakes made during installation. We will conclude with another in depth look at Milnor Schematics and wiring diagrams followed by a troubleshooting work site where the attendee will be asked to work with the schematics to troubleshoot some various problems.



Aerial view of Pellerin Milnor Corporation

## Registration Details

**Enrollment is limited and accepted on a first come, first served basis. Ensure seminar space availability before booking hotel and plane reservations.**

Enroll by returning the registration form. The fee for this training is \$575 per person per seminar.

Hotel accommodation and travel are not included in your registration fee. You are entitled to a special group rate at the host hotel for the duration of the service seminar. However, hotel reservations should be made at least two weeks in advance. When making your reservations, please state that you are attending the Pellerin Milnor service seminar. We strongly suggest you make reservations as early as possible, since rooms are on a space-available basis.

Deadline for enrollment is one week prior to seminar date. Make any cancellations prior to three days before the seminar start date to avoid \$50 cancellation fee. No refunds will be granted after class begins.

The seminar runs from 8:00AM to 4:30PM each day.

## Payment Method (\$575/person/seminar)

<input type="checkbox"/> <b>Check Enclosed</b>	
Please make check payable to Pellerin Milnor Corp.	
<input type="checkbox"/> <b>Credit Card</b>	<input type="checkbox"/> Visa <input type="checkbox"/> MasterCard
Card Number:	
<input type="text"/>	<input type="text"/>
<input type="text"/>	<input type="text"/>
Expiration Date: _____	
<input type="checkbox"/> <b>Invoice Company</b>	
P.O. Number: _____	
Attention: _____	
<b>Billing Address</b> (if different from enrolled address)	
Company: _____	
Address: _____	
City, State: _____ ZIP: _____	

## Registration (Print clearly)

Please enroll the following for the Milnor 2015  
**Washer-Extractor Service Seminar: March 3 - 6, 2015**

Name: \_\_\_\_\_

Title: \_\_\_\_\_

Company: \_\_\_\_\_

Address: \_\_\_\_\_

City: \_\_\_\_\_ State: \_\_\_\_\_ ZIP: \_\_\_\_\_

Phone: \_\_\_\_\_ FAX: \_\_\_\_\_

Email: \_\_\_\_\_

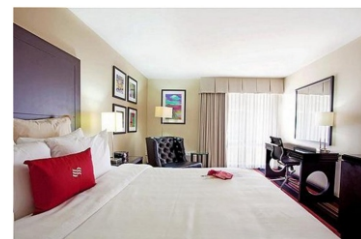
Model Numbers:

## Specifics

**Crowne Plaza, New Orleans Airport**  
2829 Williams Blvd.,  
Kenner, Louisiana 70062  
Phone: 504-467-5611, Fax: 504-469-4915  
**Room rate: \$115 per night plus tax (special rate—be sure to specify you are with the MILNOR group). Hotel registration cut off date is February 17, 2015.**

**Complimentary Airport Shuttle from New Orleans International Airport use courtesy phone at Carousel 6 in Baggage Claim Area to request Shuttle.**

The Crowne Plaza New Orleans Airport hotel is 4 miles from the airport. Guests can enjoy the convenience of the complimentary shuttle to and from the MSY Airport and within a five-mile radius of the hotel. Shuttle service is also provided to the French Quarter for \$23.00 per person. The Crowne Plaza New Orleans Airport Hotel is close to shopping, Lake Pontchartrain, and the Treasure Chest Casino.



## What's Included

These benefits are included in seminar registration:

- A personal copy of reference, parts, and electrical manuals and other literature for Milnor washer-extractors and other equipment.
- Continental breakfast in the classroom each morning.
- Lunch each day.
- Complimentary certificate of attendance and travel bag.
- Complimentary CD of Manuals.

## For more information, contact:

Nelida Harris, Training  
Pellerin Milnor Corporation  
P.O. Box 400  
Kenner, Louisiana 70063-0400  
504-712-7716 • FAX 504-712-3716  
Email - [service@milnor.com](mailto:service@milnor.com)

