

BALL VALVES

Lead Free APOLLOPEX Ball Valve

94XLF SERIES

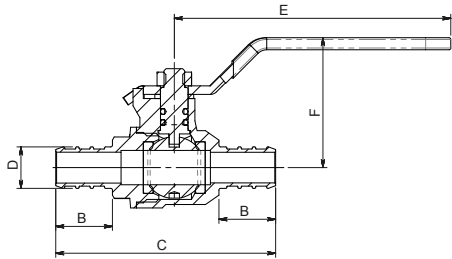


BRASS PEX BALL VALVE

The Apollo® International 94XLF Lead Free* DZR forged brass ball valves combine reliable operation with maximum economy. Ideal for plumbing and heating applications including potable water. Valves are ANSI 3rd party Lead Free* certified and listed to NSF 14, NSF 61 and NSF 372.

FEATURES

- Lead Free* DZR materials and certification
- ASTM F1807 Pex design
- White Handle Grip identifies Lead Free construction
- Standard Port design
- Double O-ring stem seal
- Blow-out Proof Stem Design
- Silicone Free assembly



Model Number	Size (in.)	Dimensions (in.)					Wt. (lbs.)
		B	C	D	E	F	
94XLF-103-01	1/2	0.65	2.52	.47	3.17	1.49	.25
94XLF-104-01	3/4	0.65	2.62	.67	3.17	1.57	.41
94XLF-105-01	1	0.80	2.91	.86	3.17	1.57	.57

Stop & Waste Ball Valves

95ALF SERIES



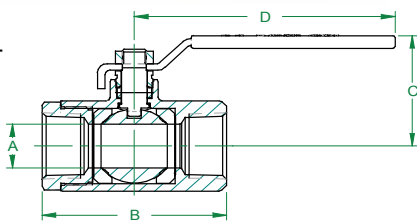
FULL-PORT LEAD FREE BRASS BALL VALVE

The Apollo International™ 95ALF Lead Free forged DZR brass ball valves combine reliable operation with maximum economy. Ideal for plumbing or hydronic systems where draining is required. Valves are certified by IAPMO and ANSI 3rd party certified lead free.

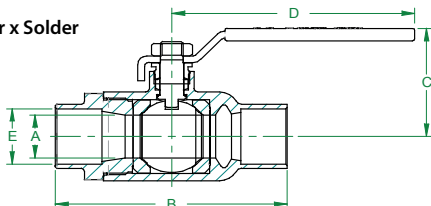
FEATURES

- Lead Free materials and certification
- Blow-out proof stem design
- Adjustable stem packing nut
- Drain port with finger tight shut-off
- Fast, quarter-turn operation
- Valve Design Rating: 600 CWP
- Temperature Range: 32°F to 250°F
- IAPMO IGC157
- NSF/ANSI 61-G Water Quality
- NSF/ANSI 372 Lead Free

NPT x NPT



Solder x Solder



LF Model Number	Size (in.)	Dimensions (in.)				
		A	B	C	D	E
NPT						
95ALF-103-01	1/2	0.59	2.24	1.78	3.74	-
95ALF-104-01	3/4	0.79	2.53	2.09	3.94	-
95ALF-105-01	1	0.98	3.15	2.36	4.33	-
Solder						
95ALF-203-01	1/2	0.59	2.12	1.78	3.74	0.63
95ALF-204-01	3/4	0.79	2.87	1.94	3.94	0.88
95ALF-205-01	1	0.98	3.53	2.36	4.33	1.13



For additional information, submittal sheets and manuals, visit www.apollovalves.com

Customer Service (704) 841-6000