

CHECK VALVES

Ball Cone® Check Valves

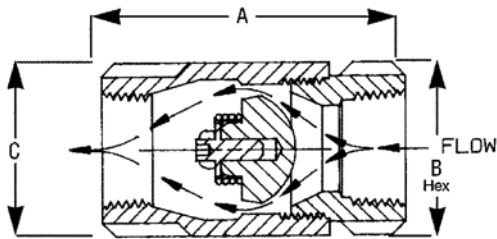
61 SERIES (MODEL CVB)



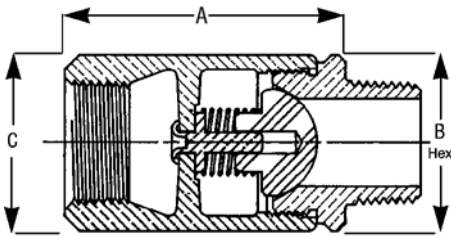
61-100
Female x Female Threaded
1/4" through 3"



61-200
Male x Female Threaded
1/4" through 2"



61-100



61-200

The Apollo Model CVB check valve with rugged bronze body and patented design (U.S. Pat. No. 4,172,465) RPTFE ball-cone check provides reliable protection against reverse flow. It is spring-loaded for fast seating and center guided for optimum alignment.

FEATURES

- 1/2 psi opening pressure
- Tight shut-off with liquid media
- 400 psig CWP
- 125 psig steam rating @350°F max
- Straight-through design
- American-made construction
- CRN OC 11218.5C
- **Lead Free Option** (model 61LF)

MATERIALS OF CONSTRUCTION

Body	Bronze - ASTM B584, UNS Alloy C84400
Retainer	Brass - ASTM B16, (1/4" – 1") Bronze - ASTM B584, (1-1/4" – 3")
Ball Check	RPTFE - Reinforced Teflon™
Guide	Brass - ASTM B16
Spring	Stainless Steel

Flow Rate (Cv)	
GPM=gallons per minute at 1 psi pressure differential	
Size	GPM
1/4"	0.85
3/8"	1.21
1/2"	1.4
3/4"	3.53
1"	6
1-1/4"	44
1-1/2"	65
2"	81
2-1/2"	175
3"	265

Pressure Temperature Ratings	
Degree (F)	PSIG
-20 to 100	400
200	200
250	160
275	150
300	140
325	130
353	125

NOTE: Not recommended for use with reciprocating pumps and similar applications. Low flows may result in undesirable noise and premature valve failure. See page 6 for additional precautions.

Dimensional Specifications

Bronze FNPT x FNPT	LF Bronze FNPT x FNPT	Bronze MNPT x FNPT	Size	Dimensions (in.)			61-100 Series Wt./100	61-200 Series Wt./100
				A	B	C		
61-101-01	61LF-101-01	61-201-01	1/4"	2.06	1.12	1.12	38	38
61-102-01	61LF-102-01	61-202-01	3/8"	2.12	1.12	1.12	37	37
61-103-01	61LF-103-01	61-203-01	1/2"	2.31	1.12	1.12	36	36
61-104-01	61LF-104-01	61-204-01	3/4"	2.87	1.37	1.50	75	76
61-105-01	61LF-105-01	61-205-01	1"	3.50	1.75	1.93	145	145
61-106-01	61LF-106-01	61-206-01	1-1/4"	4.18	2.12	2.37	275	237
61-107-01	61LF-107-01	61-207-01	1-1/2"	4.93	2.50	2.81	394	381
61-108-01	61LF-108-01	61-208-01	2"	6.00	3.00	3.68	630	636
61-109-01	61LF-109-01	-	2-1/2"	7.00	3.50	4.50	1400	-
61-100-01	61LF-100-01	-	3"	8.12	4.12	5.31	1665	-

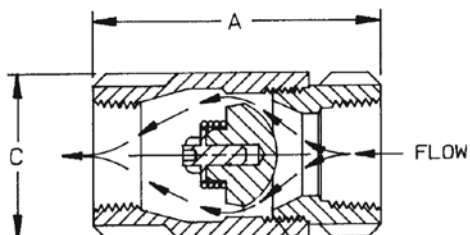
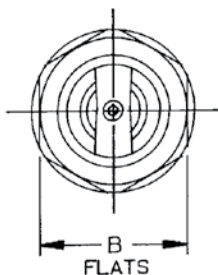
CHECK VALVES

Ball Cone® Check Valves

62 SERIES (MODEL CVS)



62-100
Female x Female Threaded
1/4" through 2"



The Apollo Model CVS is uniquely suited for applications in corrosive environments, including chemical processing, pulp and paper and other process industries. The rugged stainless steel body and RPTFE ball cone check provide reliable, patented protection against reverse flow.

FEATURES

Unique (U.S. Patent #4,172,465) ball cone design provides tight shutoff in reverse flow conditions. The body of the valve is investment cast stainless steel for longer life in severe environments. It is spring-loaded for fast seating action and center guided so that radial alignment is never needed. Straight-through flow minimizes velocity change. It is rated 400 psig CWP, cold non-shock; 125 psig saturated steam. Opening pressure 1/2 psig.

MATERIALS OF CONSTRUCTION

Body	Stainless Steel - ASTM A351, CF8M
Retainer	Stainless Steel - ASTM A276, 316 (1/4" - 1") Stainless Steel - ASTM A351, CF8M (1-1/4" - 2")
Ball Check	RPTFE - Reinforced Teflon™
Guide	Stainless Steel - ASTM A276, 316
Spring	Stainless Steel

Flow Rate (Cv)	
GPM=gallons per minute at 1 psi pressure differential	
Size	GPM
1/4"	0.85
3/8"	1.21
1/2"	1.4
3/4"	3.53
1"	6
1-1/4"	44
1-1/2"	65
2"	81

Pressure Temperature Ratings	
Degree (F)	PSIG
-20 to 100	400
200	200
250	160
275	150
300	140
325	130
353	125

Dimensional Specifications

Item Number	Size	A	B	C	Wt./100
62-101-01	1/4"	2.06	1.12	1.12	38
62-102-01	3/8"	2.12	1.12	1.12	37
62-103-01	1/2"	2.31	1.12	1.12	36
62-104-01	3/4"	2.87	1.37	1.50	75
62-105-01	1"	3.50	1.75	1.93	145
62-106-01	1-1/4"	4.18	2.12	2.37	237
62-107-01	1-1/2"	4.93	2.50	2.81	381
62-108-01	2"	6.00	3.00	3.68	636

NOTE: Not recommended for use with reciprocating pumps and similar applications. Low flows may result in undesirable noise and premature valve failure. See page 6 for additional precautions.

CHECK VALVES

IN-LINE CHECK VALVES

CHECK VALVE PART NUMBERING SYSTEM – BALL CONE CHECK MODELS

6 X	- X	X	X	- XX
TYPE	CHECK	SPRING TYPE	SIZE (IN.)	OPTIONS
1 = Bronze	1 = Ball Cone (NPT-F x F)	0 = .5 psig Cracking Pressure	1 = 1/4"	01 = Standard
1LF = Lead Free Bronze	2 = Ball Cone (NPT-M x F)	2 = .2 psig Cracking Pressure	2 = 3/8"	P01 = BSPP Thread
2 = Stainless Steel	0 = Ball Cone Repair Kit		3 = 1/2"	T01 = BSPT Thread
			4 = 3/4"	17 = Satin Chrome Plated
			5 = 1"	57 = Oxygen Cleaned
			6 = 1-1/4"	A1 = Less Spring
			7 = 1-1/2"	E05 = 5 psig Opening Pressure*
			8 = 2"	E10 = 10 psig Opening Pressure*
			9 = 2-1/2"	
			0 = 3"	

*Available in 1/4" through 1" Only.

(Note: Not all combinations are available. Contact Customer Service for verification.)

NOTE: The Cv (Valve Constant) is the gallons of water per minute that the valve will pass with a 1 PSIG pressure drop across the valve.

FLOW OF LIQUID

$$Q = C_v \sqrt{\frac{\Delta P}{SpGr}}$$

$$\text{or } \Delta P = \frac{(Q)^2 (SpGr)}{(C_v)^2}$$

WHERE:

Q = flow in US gpm
 ΔP = pressure drop (PSI)
 SpGr = specific gravity at flowing temperature
 Cv = valve constant

FLOW OF GAS

$$Q = 1360 C_v \sqrt{\frac{\Delta P (P_2)}{(SpGr) (T)}}$$

$$\text{or } \Delta P = \frac{5.4 \times 10^{-7} (SpGr) (T) (Q)^2}{(C_v)^2 (P_2)}$$

WHERE:

Q = flow in SCFH
 ΔP = pressure drop (PSI)
 SpGr = specific gravity (based on air - 1.0)
 P_2 = outlet pressure - psia (psig + 14.7)
 T = (temp. °F + 460)
 Cv = valve constant

PRECAUTIONARY NOTE:

Not recommended for use with reciprocating pumps and similar applications which may induce repetitious vibrations. Low flow rates which do not fully open the valve, may result in undesirable noise and premature valve failure. Upstream flow disturbances, which create turbulence, may also result in rapid wear. Therefore, it is recommended that a minimum of 10 diameters of straight pipe be provided between the check valve and any upstream flow disturbances such as pumps, control valves, elbows, etc.

CHECK VALVES

Soft Seated Check Valves

61-500/61-600 SERIES (MODEL CVBE)



61-500
Female x Female Threaded
1/4" through 2"



61-600
Female x Female Sweat
1/2" through 2"

The Apollo Model CVBE check valve is ideally suited for hydronic heating and other low flow applications. The rugged bronze body and check provide reliable protection against reverse flow.

FEATURES

The 61-500/61-600 features an EPDM soft seat for bubble tight shutoff, reduced noise and less vibration. It is spring-loaded for fast seating action and center guided for optimum alignment. Straight-through flow minimizes velocity change. The spring is fully protected from the flow stream, helping extend the service life of the valve. The valve is rated 400 psig CWP, cold non-shock; Maximum Temperature 250°F. **Lead Free option** now available in select models and sizes. Opening pressure 1/2 psig.

MATERIALS OF CONSTRUCTION

Body	Bronze - ASTM B584, UNS Alloy C84400
Retainer	Brass - ASTM B16 (1/4" - 1") Bronze - ASTM B584 (1-1/4" - 2")
Seat	EPDM
Guide Pin	Stainless Steel
Spring	Stainless Steel
Check	Brass - ASTM B16
Guide	Brass - ASTM B16

Flow Rate (Cv)			
GPM=gallons per minute at 1 psi pressure differential			
61-500		61-600	
Size	GPM	Size	GPM
1/4"	0.85	-	-
3/8"	1.21	-	-
1/2"	1.4	1/2"	2.20
3/4"	3.53	3/4"	4.78
1"	6	1"	6
1-1/4"	44	1-1/4"	44
1-1/2"	65	1-1/2"	65
2"	81	2"	81

NOTE: Not recommended for use with reciprocating pumps and similar applications. Low flows may result in undesirable noise and premature valve failure. See page 6 for additional precautions.

CHECK VALVE PART NUMBERING SYSTEM – SOFT SEAT MODELS

6 X	- X	X	X	- XX
TYPE	CHECK	SPRING TYPE	SIZE (IN.)	OPTIONS
1 = Bronze 1LF = Lead Free Bronze	5 = Soft Seat (NPT-F x F) 6 = Soft Seat (Solder) 9 = Soft Seat Repair Kit (EPR only)	0 = .5 psig Cracking Pressure 2 = .2 psig Cracking Pressure	1 = 1/4" 2 = 3/8" 3 = 1/2" 4 = 3/4" 5 = 1"	01 = Standard (EPDM Seat) P01 = BSPP Thread (ISO 228) T01 = BSPT Thread (EN 10226) 17 = Satin Chrome Plated 57 = Oxygen Cleaned A1 = Less Spring B1 = Nitrile Seat V1 = Viton Seat E05 = 5 psig Opening Pressure* E10 = 10 psig Opening Pressure*

*Available in 1/4" through 1" Only.

(Note: Not all combinations are available. Contact Customer Service for verification.)



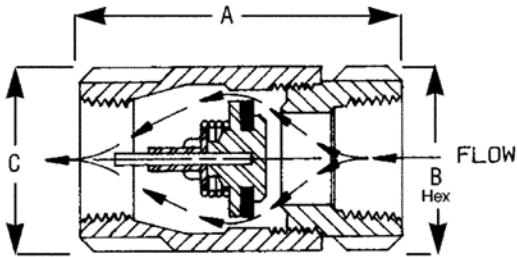
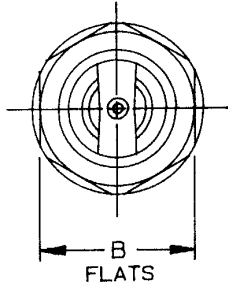
For additional information, submittal sheets and manuals, visit www.apollovalves.com

Customer Service (704) 841-6000

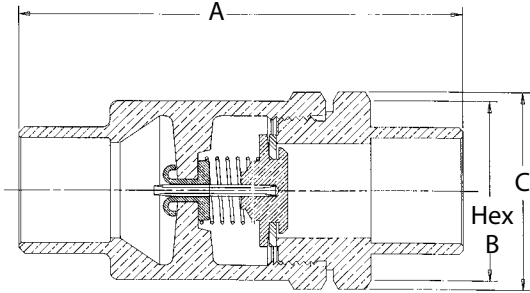
CHECK VALVES

Soft Seated Check Valves

61-500/61-600 SERIES BRONZE (CONT.)



61-500



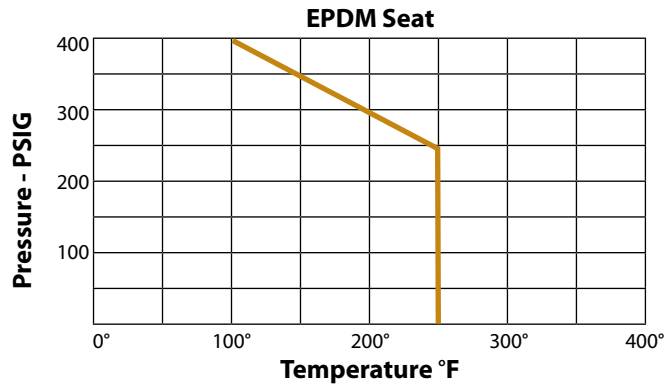
61-600

61-500 Dimensional Specifications

Item Number	LF Item Number	Size	A	B	C	Wt./100
61-501-01	61LF-501-01	1/4"	2.31	1.12	1.12	38
61-502-01	61LF-502-01	3/8"	2.31	1.12	1.12	37
61-503-01	61LF-503-01	1/2"	2.31	1.12	1.12	36
61-504-01	61LF-504-01	3/4"	2.87	1.37	1.50	75
61-505-01	61LF-505-01	1"	3.50	1.75	1.93	145
61-506-01	61LF-506-01	1-1/4"	4.18	2.12	2.37	275
61-507-01	61LF-507-01	1-1/2"	4.93	2.50	2.81	394
61-508-01	61LF-508-01	2"	6.00	3.00	3.68	630

61-600 Dimensional Specifications

Item Number	LF Item Number	Size	A	B	C	Wt./100
61-603-01	61LF-603-01	1/2"	2.75	1.12	1.25	38
61-604-01	61LF-604-01	3/4"	3.68	1.50	1.62	75
61-605-01	61LF-605-01	1"	4.50	1.93	2.12	145
61-606-01	61LF-606-01	1-1/4"	6.11	2.13	2.38	330
61-607-01	61LF-607-01	1-1/2"	6.87	2.50	2.81	610
61-608-01	61LF-608-01	2"	7.46	3.38	3.75	1010



CHECK VALVES

Soft Seated Check Valves

62-500 SERIES (MODEL CVSE)



62-500
Female x Female Threaded
1/4" through 1"

The Apollo Model CVSE is ideal for fluid flow applications in tough industrial environments. The stainless steel body and check provide lasting protection against reverse flow.

The 62-500 features a Fluorocarbon (Viton®) soft seat for bubble tight shutoff, reduced noise and vibration. It is spring-loaded for fast seating action and center guided for optimum alignment. Straight-through flow minimizes velocity change. The spring is fully protected from the flow stream, helping extend the life of the valve. The 62-500 is rated 400 psig CWP, cold non-shock; Maximum Temperature 350°F.

FEATURES

- Bubble-tight shut-off, ideally suited for gaseous service
- 400 psig CWP non-shock
- Viton® check disc
- Approximate opening pressure 1/2 psi
- RoHS Compliant
- CRN OC 11218.5C

MATERIALS OF CONSTRUCTION

Body	Stainless Steel - ASTM A351,CF8M
Retainer	Stainless Steel - ASTM A276, 316
Seat	Fluorocarbon - Viton®
Spring	Stainless Steel - AISI 316
Check	Stainless Steel - ASTM A276, 316

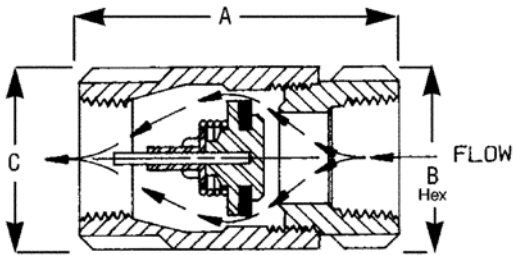
Flow Rate (Cv)	
GPM=gallons per minute at 1 psi pressure differential	
Size	GPM
1/4"	0.47
3/8"	1.57
1/2"	2.20
3/4"	4.78
1"	6.00

NOTE: Not recommended for use with reciprocating pumps and similar applications. Low flows may result in undesirable noise and premature valve failure. See page 6 for additional precautions.

CHECK VALVES

Soft Seated Check Valves

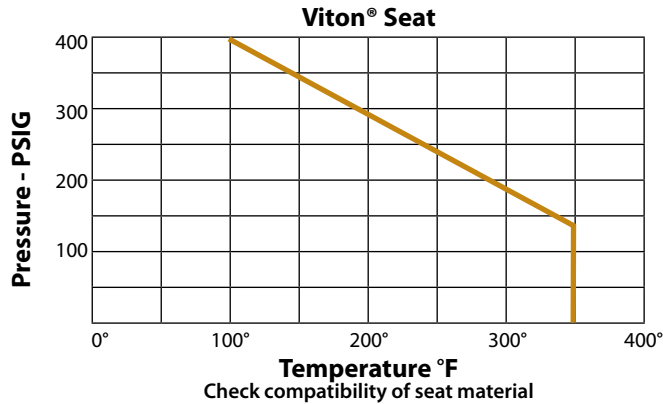
62-500 SERIES (MODEL CVSE) (CONT.)



Dimensional Specifications

Item Number	Size	A	B	C	Wt./100
62-501-01	1/4"	2.312	1.125	1.125	38
62-502-01	3/8"	2.312	1.125	1.125	37
62-503-01	1/2"	2.312	1.125	1.125	36
62-504-01	3/4"	2.875	1.375	1.500	75
62-505-01	1"	3.500	1.750	1.937	150

NOTE: Not recommended for use with reciprocating pumps and similar applications. Low flows may result in undesirable noise and premature valve failure. See page 6 for additional precautions.



CHECK VALVE PART NUMBERING SYSTEM – SOFT SEAT MODELS

62	- X	X	X	- XX
TYPE	CHECK	SPRING TYPE	SIZE (IN.)	OPTIONS
62 = Stainless Steel	5 = Soft Seat (NPT-F x F) 6 = Soft Seat (Solder) 9 = Soft Seat Repair Kit (Viton only)	0 = .5 psig Cracking Pressure 2 = .2 psig Cracking Pressure	1 = 1/4" 2 = 3/8" 3 = 1/2" 4 = 3/4" 5 = 1"	01 = Standard (Viton seat) P01 = BSPP Thread (ISO 228) T01 = BSPT Thread (EN 10226) 17 = Satin Chrome Plated 57 = Oxygen Cleaned A1 = Less Spring B1 = Nitrile Seat F1 = EPDM Seat E05 = 5 psig Opening Pressure* E10 = 10 psig Opening Pressure*

*Available in 1/4" through 1" Only.

(Note: Not all combinations are available. Contact Customer Service for verification.)

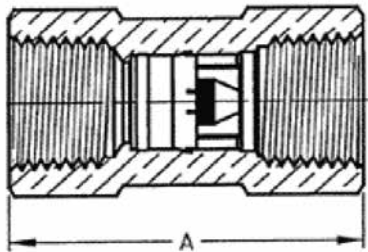
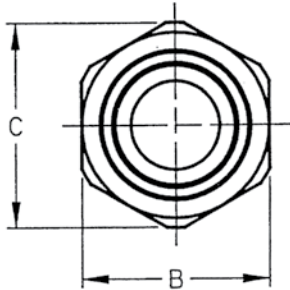
CHECK VALVES

Mini Check Valves

61-700 SERIES (MODEL CV)



61-700
Female x Female Pipe Thread
1/4" through 1"



The Apollo Model CV check valve is ideally suited for cold water, and air applications for prevention of reverse flow. The modular check cartridge provides superior leak-tight performance with low pressure loss. It is rated at 230 PSIG with a maximum temperature of 200°F.

FEATURES

- 0.5 psi cracking pressure
- Acetyl silicone check with:
 - Silicone rubber seat (1/4 & 3/8)
 - Nitrile seat (1/2-1)

MATERIALS OF CONSTRUCTION

Body	Brass, ASTM B16
Check Module	Acetal/Brass/Silicone/Buna-N
Spring	Stainless Steel 302

Dimensional Specifications

Item Number	Size	A	B	C	Wt./100
61-701-01	1/4"	1.72	0.81	0.92	22
61-702-01	3/8"	1.79	0.93	1.05	29
61-703-01	1/2"	2.02	1.06	1.17	38
61-704-01	3/4"	2.50	1.25	1.40	54
61-705-01	1"	2.95	1.62	1.76	110

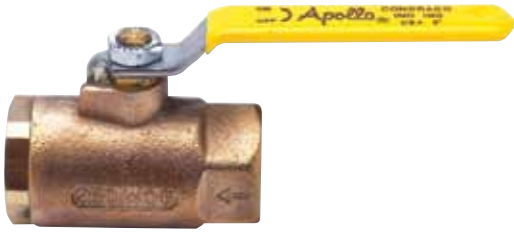
Flow Rate (Cv)	
GPM=gallons per minute at 1 psi pressure differential	
Size	GPM
1/4"	0.78
3/8"	1.81
1/2"	6.00
3/4"	11.50
1"	17.50

NOTE: Not recommended for use with reciprocating pumps and similar applications. Low flows may result in undesirable noise and premature valve failure. See page 6 for additional precautions.

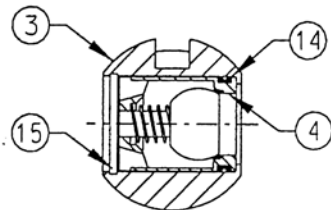
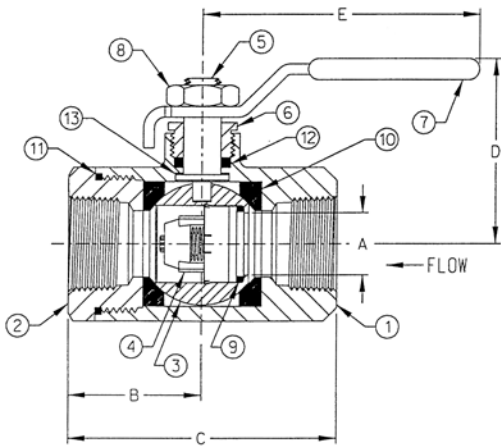
CHECK VALVES

Ball Valve with Integral Check

70-100-BC



70-100-BC
Female x Female Threaded
1/2" through 2"



The 70-100-BC Series ball valve combines two functions in a single design: positive shut-off and bubble-tight check capabilities. The BC Series is a unidirectional version of the industry-standard Apollo 70 Series ball valve. An easy flow design and superior check valve make these valves a smart choice for water or air in mechanical systems or OEM applications. Rated at 250 psi WOG and maximum temperature of 200°F.

FEATURES

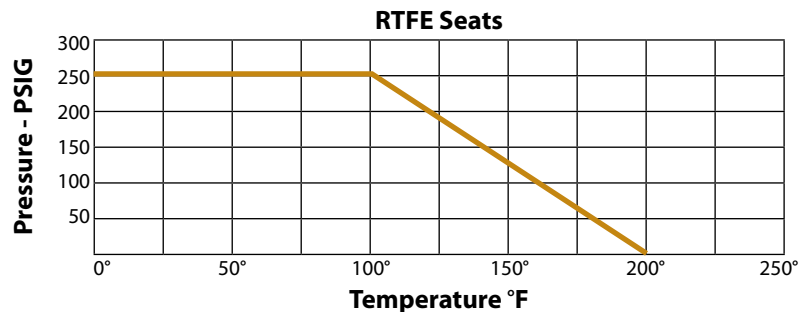
- Blowout-proof stems
- RPTFE seats and stuffing box ring
- Adjustable packing gland
- Chromium-plated ball
- Positive shut-off and bubble-tight check capability

MATERIALS OF CONSTRUCTION

1	Body	B584-C84400
2	Retainer	B16 (1/2"-1") B584-C84400 (1-1/4"-2")
3	Ball	B16 Brass Chrome Plated
4	Check Valve Insert	Acetal
5	Stem	B16 Brass
6	Gland Nut	B16 Brass
7	Lever and Grip	Steel, Zinc-plated w/vinyl
8	Lever Nut	Steel, Zinc-plated
9	O-Ring	Buna-N
10	Seat (2)	Reinforced TFE
11	Body Seal	TFE (1-1/4" - 2")
12	Stem Packing	Reinforced TFE
13	Stem Bearing	Reinforced TFE
14	Seal	EPDM (1/2")
15	Retaining Ring	Spring Steel (1/2")

Dimensional Specifications

Item Number	Size	A	B	C	D	E	Wt./100
70-103-BC	1/2"	0.50	1.12	2.25	1.80	3.87	0.63
70-104-BC	3/4"	0.68	4.50	3.00	2.12	4.87	1.33
70-105-BC	1"	0.87	1.68	3.37	2.25	4.87	1.77
70-106-BC	1-1/4"	1.00	2.00	4.00	2.73	5.50	3.29
70-107-BC	1-1/2"	1.25	2.18	4.37	3.09	8.00	4.63
70-108-BC	2"	1.50	2.34	4.68	3.28	8.00	6.01



NOTE: Not recommended for use with reciprocating pumps and similar applications. Low flows may result in undesirable noise and premature valve failure. See page 6 for additional precautions.

CHECK VALVES

Swing Check Valves

61Y SERIES



Solder



NPT

PERFORMANCE RATING:

Saturated Steam: 125 psi (8.6 Bar) to 353°F (178°C)
CWP: 200 psi (13.8 Bar) at 100°F
Temp. Range: -20°F to 406°F

CLASS 125

The Apollo Swing Checks provides a cost effective “made in the USA” alternative to globally sourced check valves. These valves are cast, machined, assembled, and tested in South Carolina. The Apollo Swing Check can be installed in both horizontal or vertical line with upward flow. Bronze Disc, Solder.

FEATURES

- Renewable Seat Disc
- Metal Seat
- Dezincification Resistant Bronze
- 100% Factory tested
- Solder Connections
- 100% machined and assembled in US
- **Lead Free Option** (model 61YLF)

MATERIALS OF CONSTRUCTION

Body	Bronze, ASTM B62
Cap	Bronze, ASTM B62
Hanger	Stainless Steel
Pin	Stainless Steel
Seat*	Bronze, ASTM B62
Plug	Brass

* PTFE and Viton seat option

APPROVALS

- Standard - MSS SP-80
- Lead Free - MSS SP-139
- CRN OC 14667.5

Lead Free

Bronze, ASTM B584-C89836
Bronze, ASTM B584-C89836
Stainless Steel
Stainless Steel
Bronze, ASTM B584-C89836

WARNING: Do not use in reciprocating compressor service. See page 13 for additional precautions.

Dimensional Specifications (Solder)

161S Item Number (Metal)	161S-LF Item Number (Metal)	163S Item Number (Metal)	163S-LF Item Number (Metal)	Size	Height	Length	Wt./100
61Y-093-01	61YLF-093-01	61Y-103-T1	61YLF-103-T1	1/2"	1.65	2.53	.62
61Y-094-01	61YLF-094-01	61Y-104-T1	61YLF-104-T1	3/4"	1.9	3.36	.91
61Y-095-01	61YLF-095-01	61Y-105-T1	61YLF-105-T1	1"	2.26	4.07	1.7
61Y-096-01	61YLF-096-01	61Y-106-T1	61YLF-106-T1	1-1/4"	2.99	5.28	3.2
61Y-097-01	61YLF-097-01	61Y-107-T1	61YLF-107-T1	1-1/2"	2.99	5.28	2.7
61Y-098-01	61YLF-098-01	61Y-108-T1	61YLF-108-T1	2"	3.74	6.50	4.9
61Y-099-01	-	61Y-109-T1	-	2-1/2"	5.11	8.30	9.7
61Y-090-01	-	61Y-100-T1	-	3"	6.05	9.58	15.0

Height is measured from centerline to top of access cap.

Dimensional Specifications (NPT)

161T Item Number (Metal)	161T-LF Item Number (Metal)	162T Item Number (Viton)	163T Item Number (PTFE)	163T-LF Item Number (PTFE)	Size	Height	Length	Wt./100
61Y-191-01	61YLF-191-01	61Y-201-V1	61Y-201-T1	-	1/4"	1.51	2.14	.64
61Y-192-01	61YLF-192-01	61Y-202-V1	61Y-202-T1	-	3/8"	1.51	2.14	.62
61Y-193-01	61YLF-193-01	61Y-203-V1	61Y-203-T1	61YLF-203-T1	1/2"	1.65	2.48	.73
61Y-194-01	61YLF-194-01	61Y-204-V1	61Y-204-T1	61YLF-204-T1	3/4"	1.9	2.94	1.06
61Y-195-01	61YLF-195-01	61Y-205-V1	61Y-205-T1	61YLF-205-T1	1"	2.26	3.57	1.7
61Y-196-01	61YLF-196-01	61Y-206-V1	61Y-206-T1	61YLF-206-T1	1-1/4"	2.99	4.50	3.3
61Y-197-01	61YLF-197-01	61Y-207-V1	61Y-207-T1	61YLF-207-T1	1-1/2"	2.99	4.50	3.1
61Y-198-01	61YLF-198-01	61Y-208-V1	61Y-208-T1	61YLF-208-T1	2"	3.74	5.25	5.5
61Y-199-01	-	-	-	-	2-1/2"	5.11	8.00	11.7
61Y-190-01	-	-	-	-	3"	6.05	9.24	17.8

Height is measured from centerline to top of access cap.



CHECK VALVES

Swing Check Valves

61Y SERIES



PERFORMANCE RATING:

Saturated Steam: 150 psi (10.4 Bar)
to 366°F (185°C)
CWP: 300 psi (20.7 Bar)
at 100°F
Temp. Range: -20°F to 406°F

CLASS 150

The Apollo Model 164 Swing Check provides a cost effective “made in the USA” alternative to globally sourced check valves. These valves are cast, machined, assembled, and tested in South Carolina. The Apollo Swing Check can be installed in both horizontal or vertical line with upward flow. Bronze Seat, NPT.

FEATURES

- Renewable Seat Disc
- Metal Seat
- Dezincification Resistant Bronze
- 100% Factory tested
- NPT Connections
- 100% manufactured in USA

MATERIALS OF CONSTRUCTION

Body & Cap Bronze ASTM B62
Hanger & Pin Stainless Steel
Seat Bronze ASTM B62
Plug Brass

WARNING: Do not use in reciprocating compressor service. See page 13 for additional precautions.

Dimensional Specifications

164T Item Number (Metal)	Size	Height	Length	Wt./100
61Y-211-01	1/4"	1.51	2.14	.64
61Y-212-01	3/8"	1.51	2.14	.62
61Y-213-01	1/2"	1.65	2.48	.73
61Y-214-01	3/4"	1.90	2.94	1.06
61Y-215-01	1"	2.26	3.57	1.70
61Y-216-01	1-1/4"	2.99	4.50	3.40
61Y-217-01	1-1/2"	2.99	4.50	3.10
61Y-218-01	2"	3.74	5.25	5.50
61Y-219-01	2-1/2"	5.11	8.00	11.70
61Y-210-01	3"	6.05	9.24	17.80

Height is measured from centerline to top of access cap.

61Y SERIES



PERFORMANCE RATING:

Saturated Steam: 300 psi (20.7 Bar)
CWP: 600 psi (41.4 Bar)
at 100°F (38°C)
Temp. Range: -20°F to 422°F
(-29°C to 216°C)

CLASS 300

FEATURES

- Y-Pattern
- Bronze Disc / PTFE Disc
- NPT

MATERIALS OF CONSTRUCTION

Body & Cap Bronze ASTM B61
Hanger & Pin Stainless Steel
Seat Bronze ASTM B61 PTFE
Plug Brass

Dimensional Specifications

168T Item Number (Metal)	169T Item Number (PTFE)	Size	Height	Length	Wt./100
61Y-753-01	61Y-753-T1	1/2"	1.65	2.50	.75
61Y-754-01	61Y-754-T1	3/4"	1.90	2.95	1.20
61Y-755-01	61Y-755-T1	1"	2.27	3.57	1.80
61Y-756-01	61Y-756-T1	1-1/4"	3.00	4.50	3.50
61Y-757-01	61Y-757-T1	1-1/2"	3.00	4.50	3.20
61Y-758-01	61Y-758-T1	2"	3.75	5.25	5.60

Height is measured from centerline to top of access cap.



For additional information, submittal sheets and manuals, visit www.apollovalves.com

Customer Service (704) 841-6000

CHECK VALVES

Swing Check Valves

6SC SERIES

**Model
910F**



910F Class 125
 910FLW Class 125
 Lever & Weight Design
 920F Class 250

**Model
910FLW**



The Apollo International™ Model 910 and 920 Flanged Cast Iron Swing Check valves provide full flow capabilities. They provide reliable and economical protection against reverse flow. The Apollo Swing Check valves can reliably be installed in most plumbing and heating systems including building service piping. Flanged connection with bolted bonnet for easy access to internals.

FEATURES

- Compatible with ANSI 125# & 150# Flanges
- Full Port
- Minimal Pressure Drop
- Flanged Connection
- Bolted Bonnet
- Integral Bronze Seat
- MSS SP-71 approval

MATERIALS OF CONSTRUCTION

Body	Cast Iron (ASTM A126 CL-B)
Bonnet	Cast Iron (ASTM A126 CL-B)
Bolts	Steel (ASTM A307 B)
Nameplate	Aluminum
Body Gasket	Graphite
Nuts	Steel (ASTM A307 B)
Side Plug	Brass (ASTM B16)
Gasket	Graphite
Hanger Pin	Brass (ASTM B16)
Hanger	Ductile Iron (ASTM A536 65-45-12)
Disc Ring	Cast Bronze (2"-6") Cast Iron (8"-20")
Disc	Cast Iron (ASTM A126 CL-B)
Washer	Steel (ASTM A307 B)
Split Pin	Stainless Steel (ASTM 420 S42000)
Seat Ring	Cast Bronze (2"-6") Cast Iron (8"-20")
Disc Nut	Steel (ASTM A307 B)
Stud Bolt	Steel (ASTM A307 B)

WARNING: Do not use in reciprocating compressor service. See page 13 for additional precautions.

Dimensional Specifications

910F Number	910FLW Number	920F Number	Size	Height	Length 910F & 910FLW	Length 920F	Wt. 910F	Wt. 910FLW	Wt. 920F
6SC-108-B1	6SC-108-B1L	6SC-208-B1	2"	4.41	8.00	10.51	26	39	30
6SC-109-B1	6SC-109-B1L	6SC-209-B1	2-1/2"	5.24	8.50	11.50	39	45	44
6SC-100-B1	6SC-100-B1L	6SC-200-B1	3"	5.67	9.50	12.50	47	63	55
6SC-10A-B1	6SC-10A-B1L	6SC-20A-B1	4"	6.61	11.50	14.00	82	99	90
6SC-10B-B1	6SC-10B-B1L	6SC-20B-B1	5"	7.80	13.00	15.75	124	132	135
6SC-10C-B1	6SC-10C-B1L	6SC-20C-B1	6"	8.54	14.00	17.50	160	170	172
6SC-10E-01	6SC-10E-01L	6SC-20E-01	8"	10.28	19.50	21.00	271	282	289
6SC-10G-01	6SC-10G-01L		10"	11.30	24.50		437	439	
6SC-10H-01	6SC-10H-01L		12"	12.56	27.50		644	672	
6SC-10J-01			14"	17.50	31.00		950		
6SC-10K-01			16"	23.45	36.00		1160		
6SC-10M-01			18"	27.50	36.00		1720		
6SC-10N-01			20"	29.25	40.00		2094		

CHECK VALVES

Wafer Check Valves

6WC SERIES



The Apollo International™ Model 910WB and 910WE Cast Iron Wafer Check valves provide full flow capabilities. It provides reliable and economical protection against reverse flow. The Apollo Wafer Check valve can reliably be installed in most plumbing and heating systems including building service piping. Wafer flanged connection.

FEATURES

- Wafer Flanged Connection
- Compatible with ANSI 125# & 150# Flanges
- Full Port
- Minimal Pressure Drop
- Light Weight
- Spring Assisted Closing for Quicker Response

MATERIALS OF CONSTRUCTION

Body	Cast Iron (ASTM A126 CL-B)
Seat Ring	EPDM (910WE)
Seat Ring	Nitrile (Buna-N) (910WB)
Disc	Aluminum Bronze
Spring	Stainless Steel 316
Stem	Stainless Steel 316
Screw	Carbon Steel
Pin	Stainless Steel 316

PERFORMANCE RATING:

MODEL 910WB

CWP: 200 psi (13.8 Bar) at 100°F (2-12")
150 psi (10.3 Bar) at 100°F (14-24")

Temp. Range: 10°F to 180°F

MODEL 910WE

CWP: 200 psi (13.8 Bar) at 100°F (2-12")

Temp. Range: -30°F to 275°F

WARNING: Do not use in reciprocating compressor service. See page 13 for additional precautions.

910WB & 910WE Dimensional Specifications

910WB Number	910WE Number	Size	Diameter	Length	Wt.	Max. Cracking Pressure (psi)
6WC-108-N1	6WC-108-E1	2"	4.00	2.12	5	0.70
6WC-109-N1	6WC-109-E1	2-1/2"	4.75	2.38	7	0.70
6WC-100-N1	6WC-100-E1	3"	5.25	2.62	10	0.70
6WC-10A-N1	6WC-10A-E1	4"	6.75	2.62	12	0.70
6WC-10B-N1	6WC-10B-E1	5"	7.50	3.25	15	0.70
6WC-10C-N1	6WC-10C-E1	6"	8.50	3.75	22	0.70
6WC-10E-N1	6WC-10E-E1	8"	11.00	5.00	35	0.70
6WC-10G-N1	6WC-10G-E1	10"	13.25	5.50	66	0.70
6WC-10H-N1	6WC-10H-E1	12"	16.00	7.12	108	0.70
6WC-10J-N1		14"	17.75	7.25	172	1.00
6WC-10K-N1		16"	20.00	7.50	132	1.00
6WC-10M-N1		18"	21.50	8.00	223	1.00
6WC-10N-N1		20"	23.75	8.38	333	1.00
6WC-10P-N1		24"	28.00	8.75	474	1.00