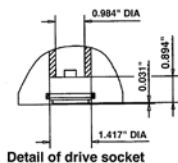
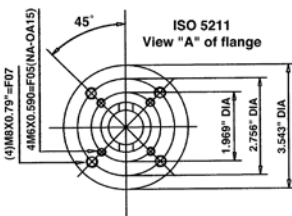
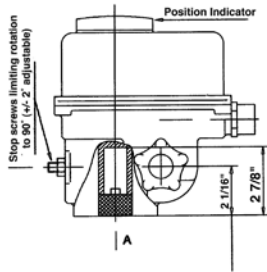
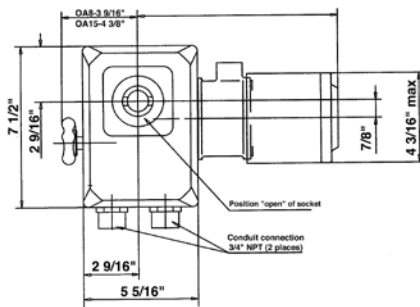
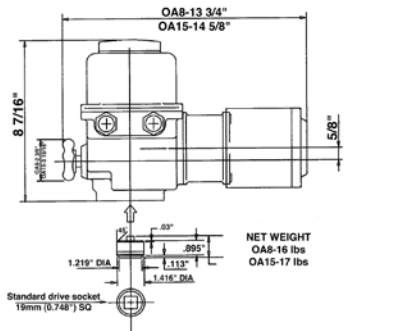


# ACTUATORS AND CONTROLS

## LB Series Actuator Dimensions

### TYPES A08 AND OA15

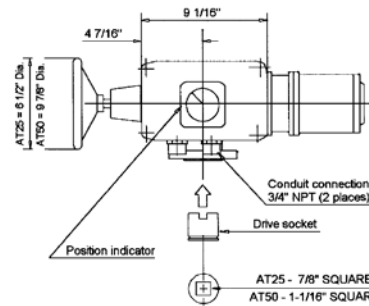
Standard specification: Weatherproof NEMA 4, with two adjustable SPDT limit switches; with built-in motor thermal cutouts, with handwheel for manual operation. Duty rating 30%.



### TYPES AT25 AND AT50

Standard specification: Weatherproof to NEMA 4, fitted with two adjustable SPDT travel limit switches (one for each extreme position); two SPDT torque limit switches (one for each direction of rotation) and with handwheel for manual operation.

Duty rating 30%. Net weight: 40 lbs.  
AT25 female socket dimension = .866 square  
AT50 female socket dimension = 1.063 square



NET WEIGHT  
AT25 - 35 lbs  
AT50 - 40 lbs

