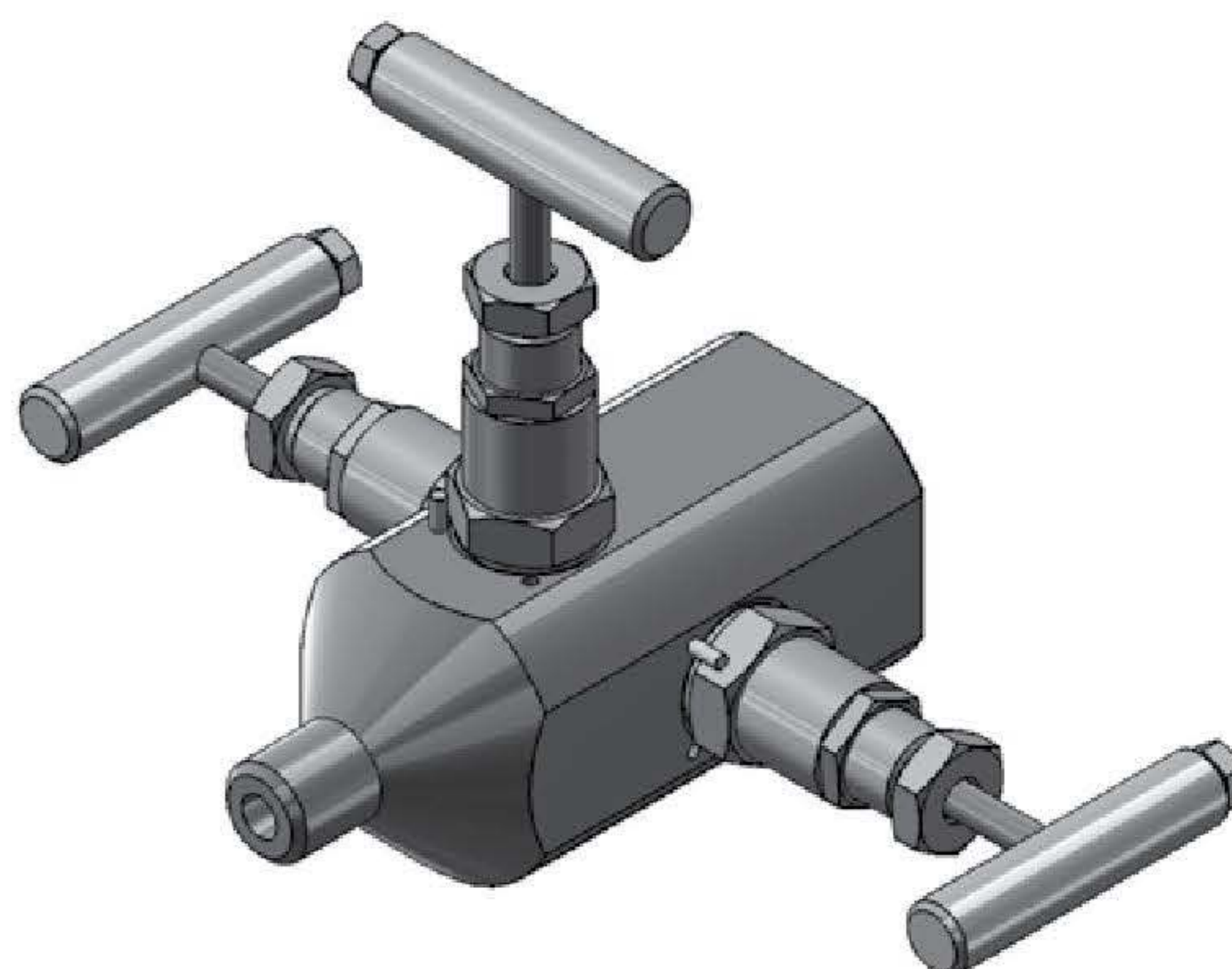


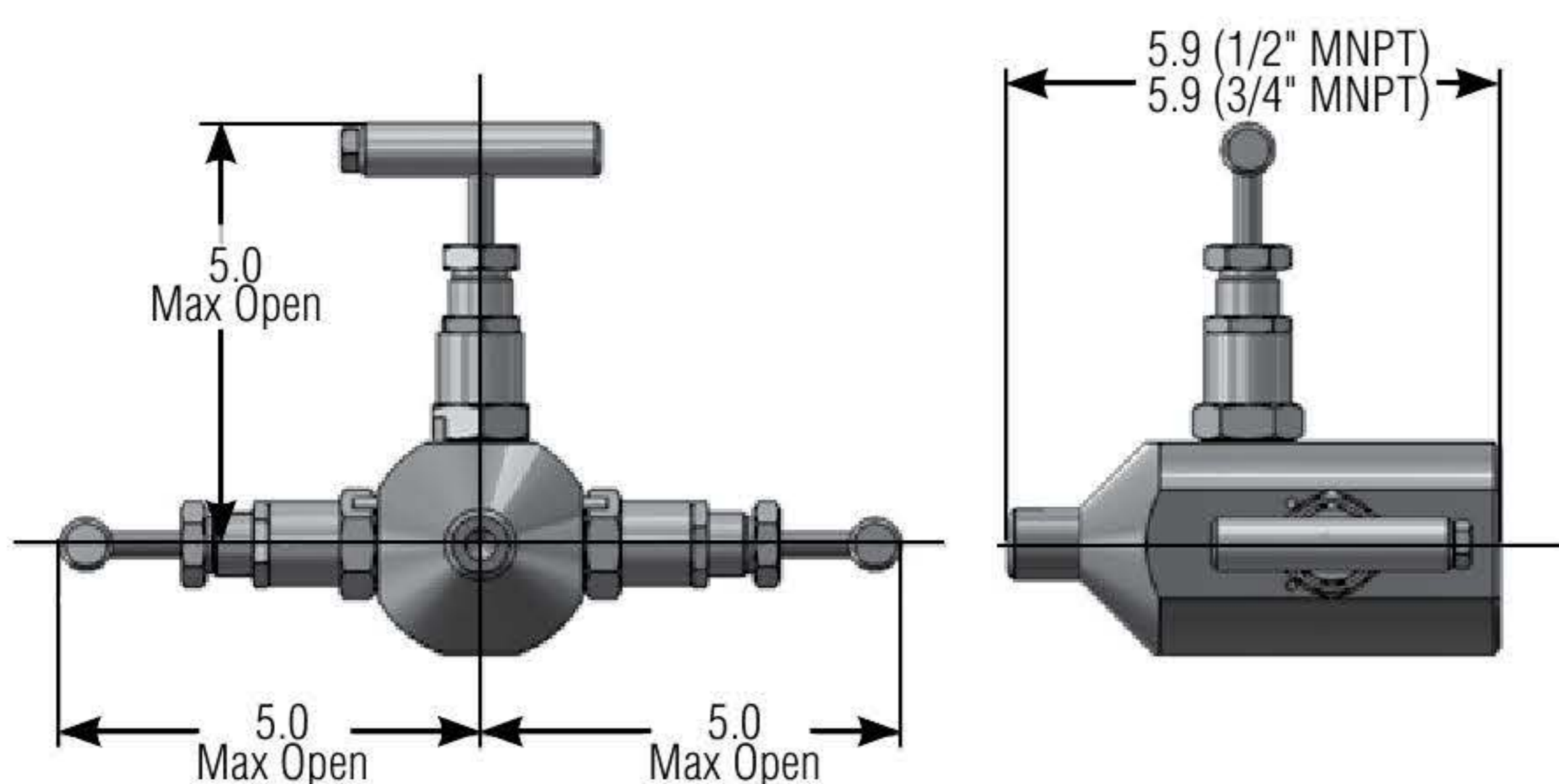
### NPT x NPT Hexblok - Needle Valve

- 1/4", 1/2", 9/16", 3/4", 1" sizes available.
- Forged body design provides the strength needed to keep this valve small and compact.
- Pressure ranges of 6,000 psi and 10,000 psi.
- Lower cost, less weight, and smaller size than standard piping methods makes this the perfect valve for instrumentation pressure points.
- Available in many grades of material (Stainless Steel, Duplex, Super-Duplex, etc.)

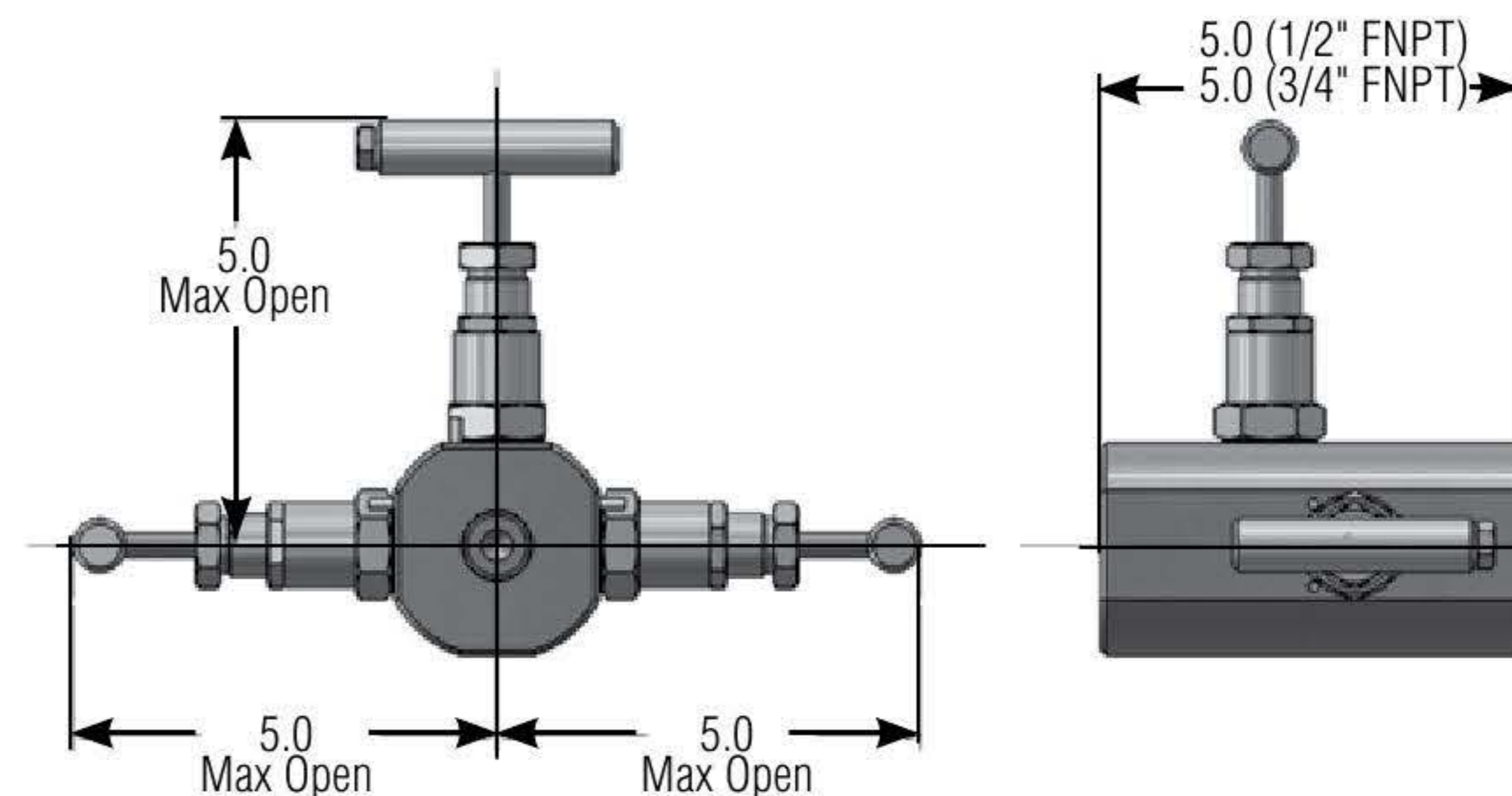
### HK30 MNPTxFNPT



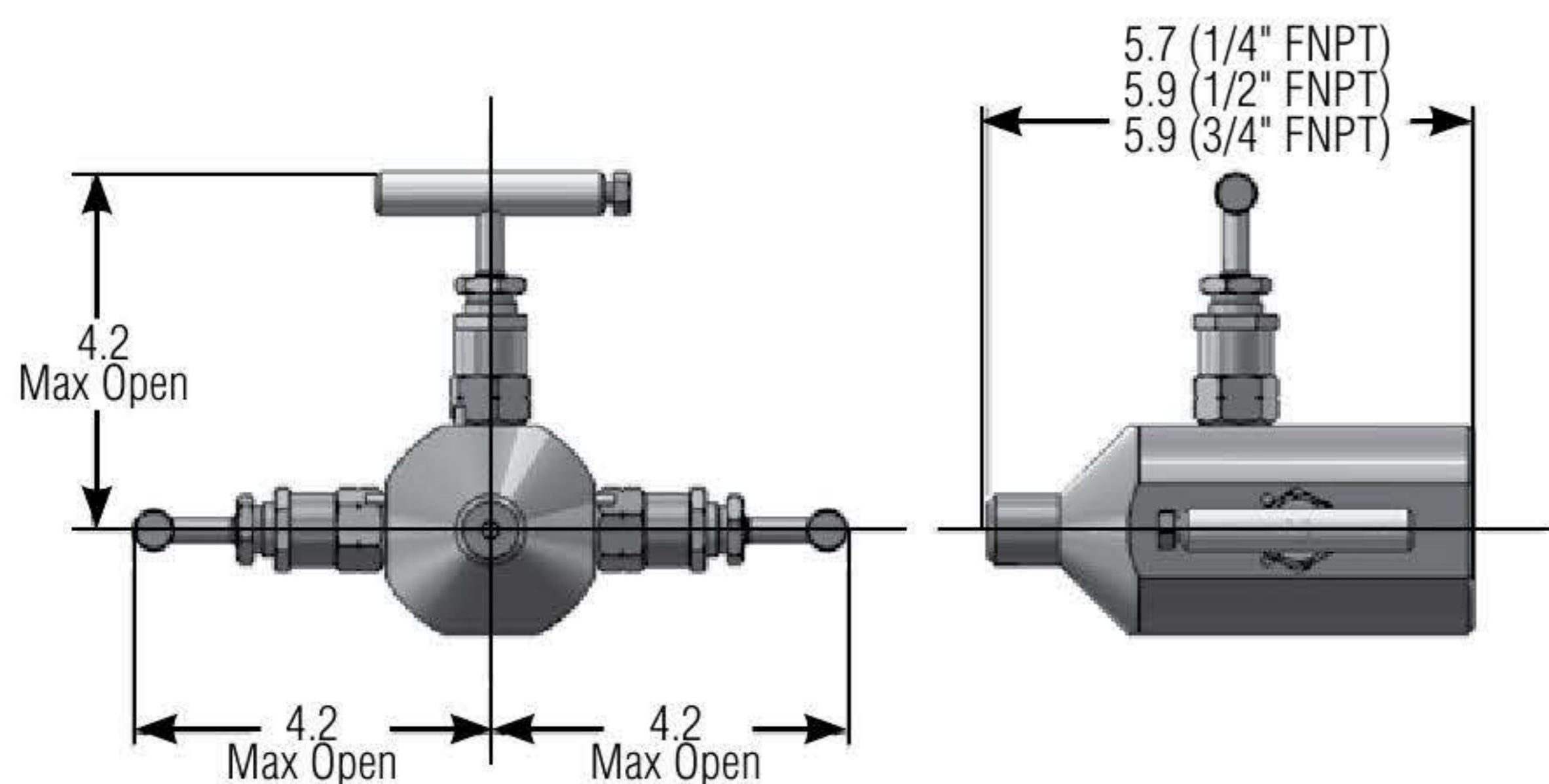
### MNPTxFNPT (HK30 Shown)



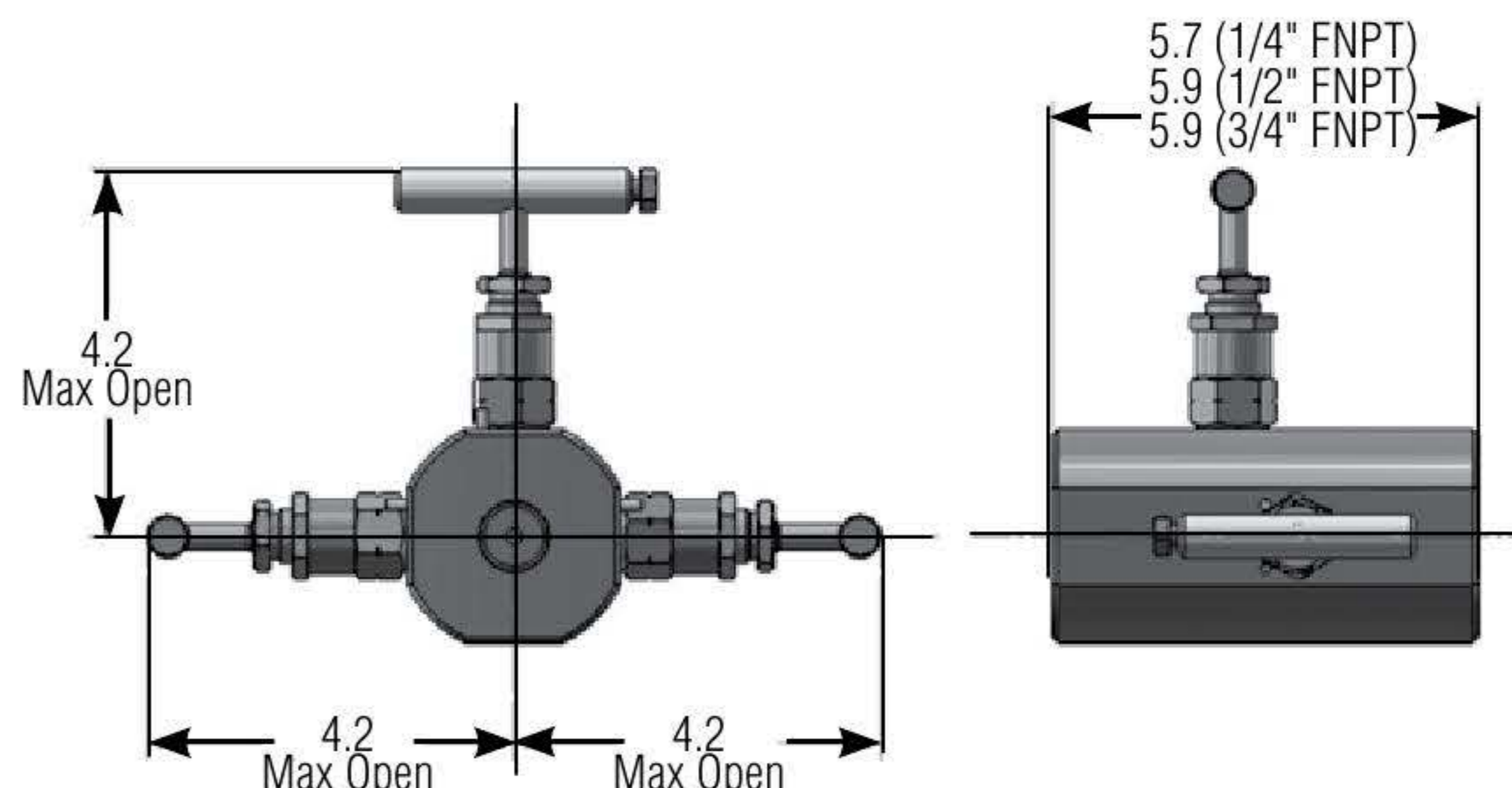
### FNPTxFNPT (HK30 Shown)



### 10,000 PSI MNPTxFNPT (HK30 Shown)



### 10,000 PSI FNPTxFNPT (HK30 Shown)



### Materials of Construction - Hexblok Globe Style Valve

Item	Description	Material Code 'U' / 'D'	Material Code 'Y' / '3'	Material Code 'P' / 'N'	Exotic (Note 2)
1	Body	316 SS / 316 SS Nace	316L SS / 316L SS Nace	A105 / A105 Nace (Note 1)	Exotic
2	Bonnet	316 SS / 316 SS Nace	316L SS / 316L SS Nace	316 SS / 316 SS Nace	Exotic
3	Packing Follower	303 SS	303 SS	303 SS	303 SS
4	Packing	PTFE or Graphite	PTFE or Graphite	PTFE or Graphite	PTFE or Graphite
5	Retaining Ring	316 SS / 316 SS Nace	316L SS / 316L SS Nace	316 SS / 316 SS Nace	Exotic
6	Stem	316 SS / 316 SS Nace	316L SS / 316L SS Nace	316 SS / 316 SS Nace	Exotic
7	Tip	316 SS / 316 SS Nace	316L SS / 316L SS Nace	316 SS / 316 SS Nace	Exotic
8	Locknut	303 SS	303 SS	303 SS	303 SS
9	Handle	303 SS	303 SS	303 SS	303 SS
10	Yoke (Note 3)	316 SS	316 SS	316 SS	316 SS
11	Yoke Ring (Note 3)	316 SS	316 SS	316 SS	316 SS

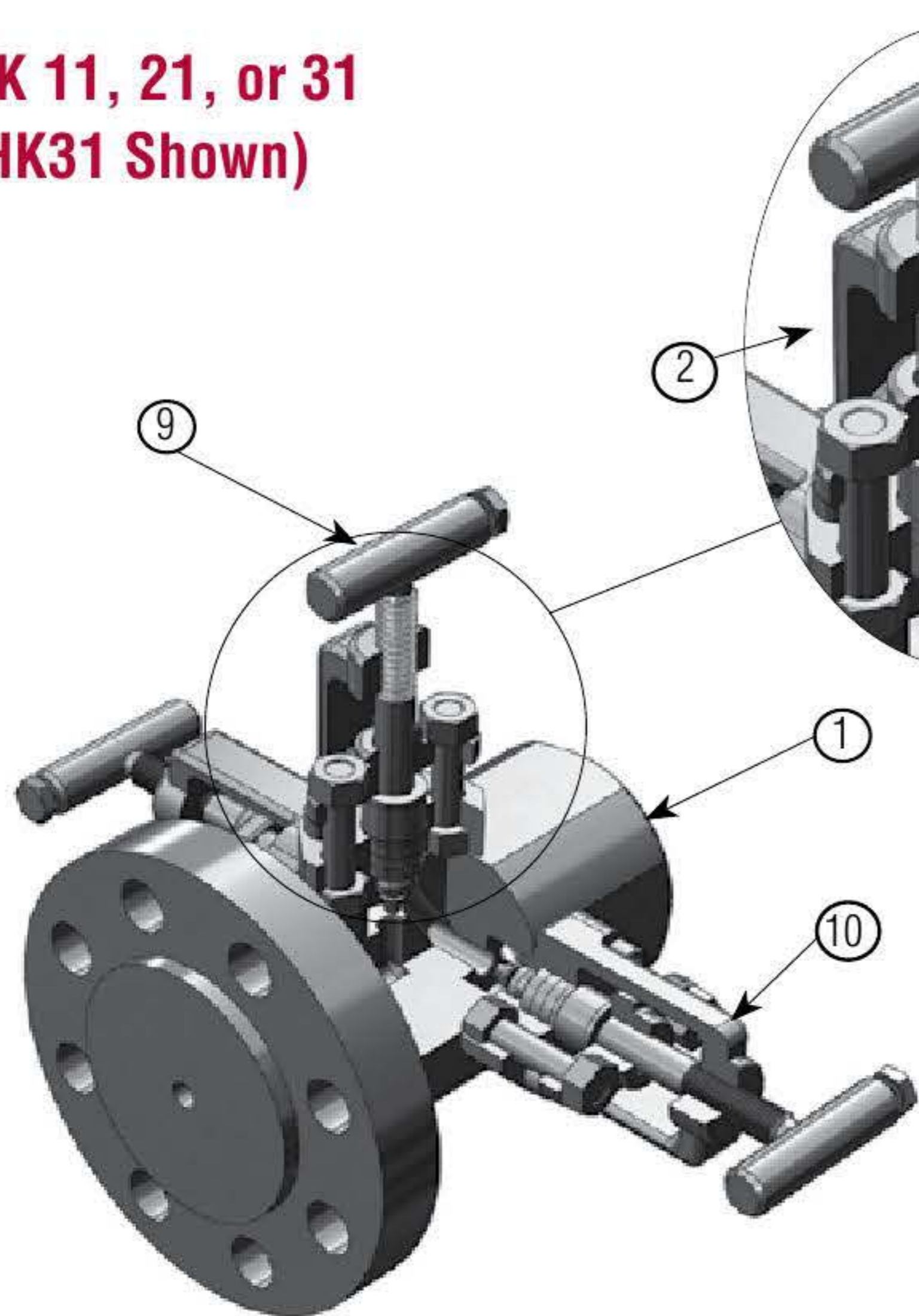
Notes:

1 - Carbon steel valve bodies and components are zinc plated

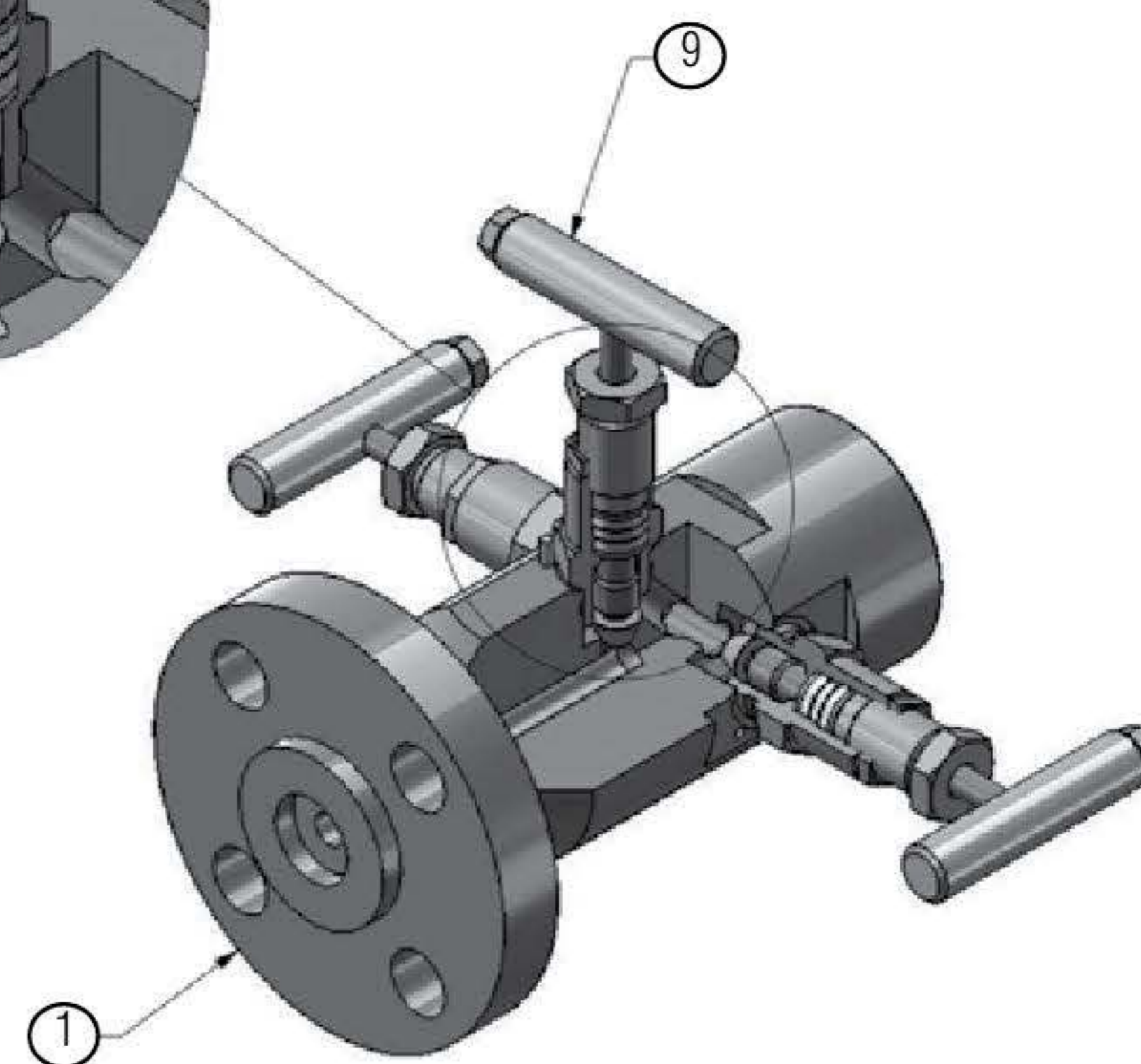
2 - See product designator (next page) for full list of materials

3 - HK11, HK21, HK31, & HK41 Only

#### HK 11, 21, or 31 (HK31 Shown)



#### HK 10, 20, or 30 (HK30 Shown)





MODEL	BODY CONFIG.	BODY MAT'L	INLET SIZE	INLET TYPE	OUTLET SIZE	OUTLET TYPE	STEM/TIP	SEAT MAT'L	PACKING	OPTION	OPTION
HK10	2	2	3	C	3	1	4	1	3	A	8

MODEL	TYPE
HK10	Single Block Screwed Bonnet
HK11	Single Block OS&Y Bonnet
HK20	Single Block & Bleed Screwed Bonnet
HK21	Single Block & Bleed OS&Y Bonnet
HK30	*Double Block & Bleed Screwed Bonnet
HK31	*Double Block & Bleed OS&Y Bonnet
HK40	**Double Block & Bleed Screwed Bonnet
HK41	**Double Block & Bleed OS&Y Bonnet

\* Block > Bleed > Block \*\* Block > Block > Bleed

BODY CONFIGURATION	
1	Hard Seat Block Valve(s)
2	Soft Seat Block Valve(s)
3	Hard Seat Primary and Vent Valve and Soft Seat Secondary Block Valve (HK30 and HK31 only)

# 2 & 3 - soft seat is limited to 200°F and 1500 psi (103°C and 93 bar)

Vent valve always hard seat

BODY MATERIAL	
U	316SS (forged)
D	316SS NACE (forged)
Y	A182F 316L (forged)
3	A182F 316L NACE (forged)
P	Carbon Steel A105
N	Carbon Steel, A105 NACE
6	Duplex A182 F51 (forged)
4	Super Duplex A182 F55 (forged)
H	Hastelloy C
X	Alloy 20
K	Low Temp CS A350 LF2 (forged)
7	Inconel 625
I	Incoloy 825
M	Monel 400 (forged)

INLET SIZE	
1	1/4" (DN8)
2	3/8" (DN10)
3	1/2" (DN15)
4	3/4" (DN20)
5	1" (DN25)
6	1-1/2" (DN40)
7	2" (DN50)

INLET TYPE	
1	MNPT
3	FNPT
4	FSW
C	150# RF
D	300# RF
G	600# RF
H	900/1500# RF
K	2500# RF
L	150# RTJ
M	300# RTJ
N	600# RTJ
P	900/1500# RTJ
R	2500# RTJ

OUTLET SIZE	
1	1/4"
2	3/8"
3	1/2" (DN15)
4	3/4" (DN20)
5	1" (DN25)
6	1-1/2" (DN40)
7	2" (DN50)
9	Flanged - Same as inlet

OUTLET TYPE	
1	FNPT
7	MNPT
2	FSW
9	Flanged - Same as inlet

BALL & STEM / NRT (VENT VALVE)	
4	316/316 Stem w/ NRT tip
3	316/316 NACE Stem w/ NRT tip
5	316/Stellite Stem w/ NRT tip
K	316/Monel Stem w/ NRT tip
Y	316L/316L Stem w/ NRT tip
A	316L/316L NACE Stem w/ NRT tip
M	Duplex/Duplex Stem w/ NRT tip
C	Super Duplex/Super Duplex Stem w/ NRT tip
D	Hastelloy C/Hastelloy C Stem w/ NRT tip
G	Alloy 20/Alloy 20 Stem w/ NRT tip
6	I-625/I-625 Stem w/ NRT tip
7	I-825/I-825 Stem w/ NRT tip
B	Monel/Monel Stem w/ NRT tip

Note: For different NRT tip material, contact factory

SEAT MATERIAL	
1	Integral Seat
2	* Teflon (Body configuration "2" and "3" only)

\* Contact factory for other seat materials

PACKING	
2	Teflon Packing
3	Graphite Packing (fire safe selection)

OPTION*	
M	Two Outlets
N	Three Outlets
S	Swivel Adapter**
C	Plugged vent option (same material as body)
D	1/4" Vent Port
6	100% 316 non-wet parts
8	Tamper Proof/Lockout Handle - Block Valve(s)
9	Tamper Proof/Lockout Handle - Vent Valve
G	Bonnet Grease Fitting

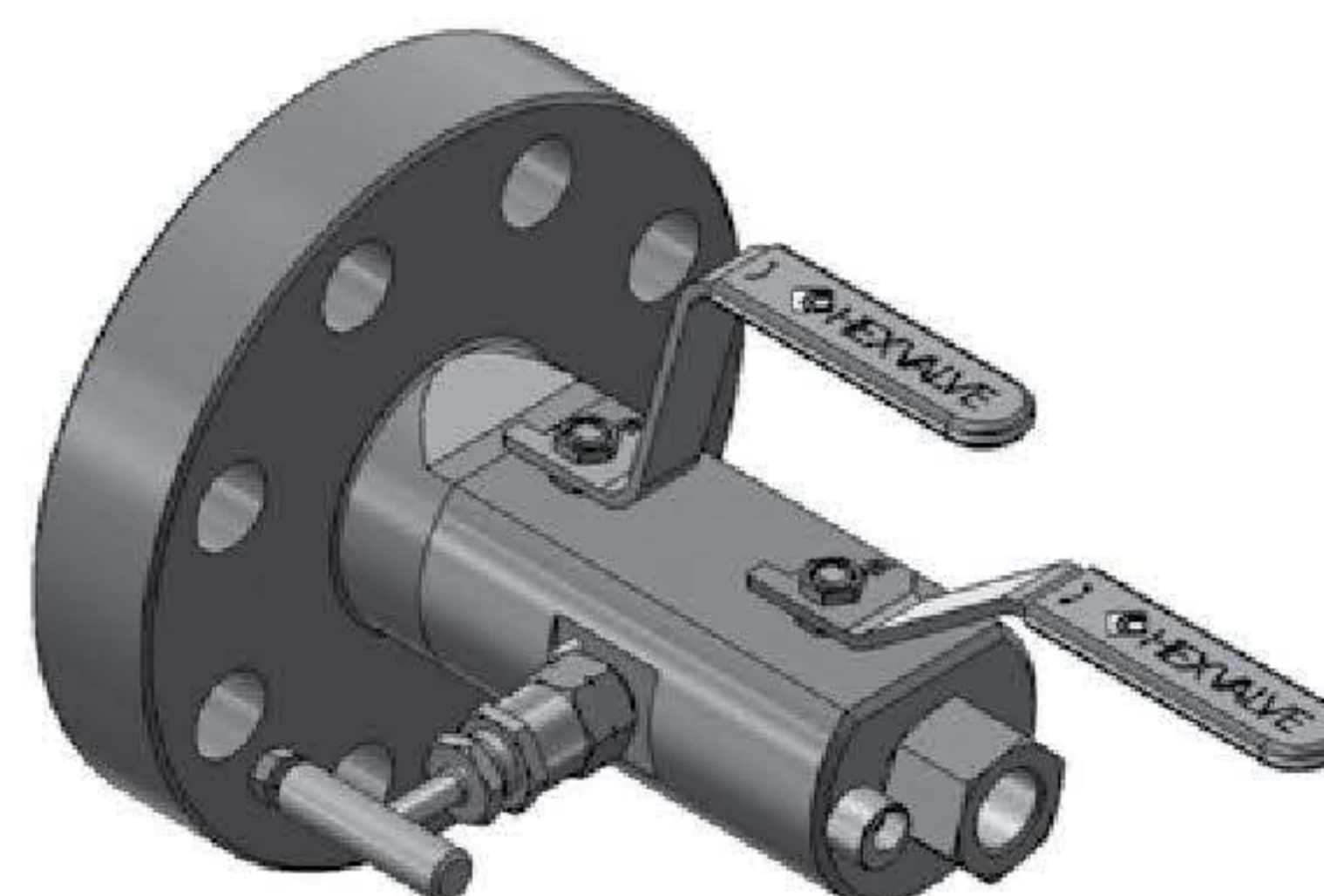
\*Note: Choose any two options in alpha-numerical order

\*\* Consult factory for swivel adapter ordering options

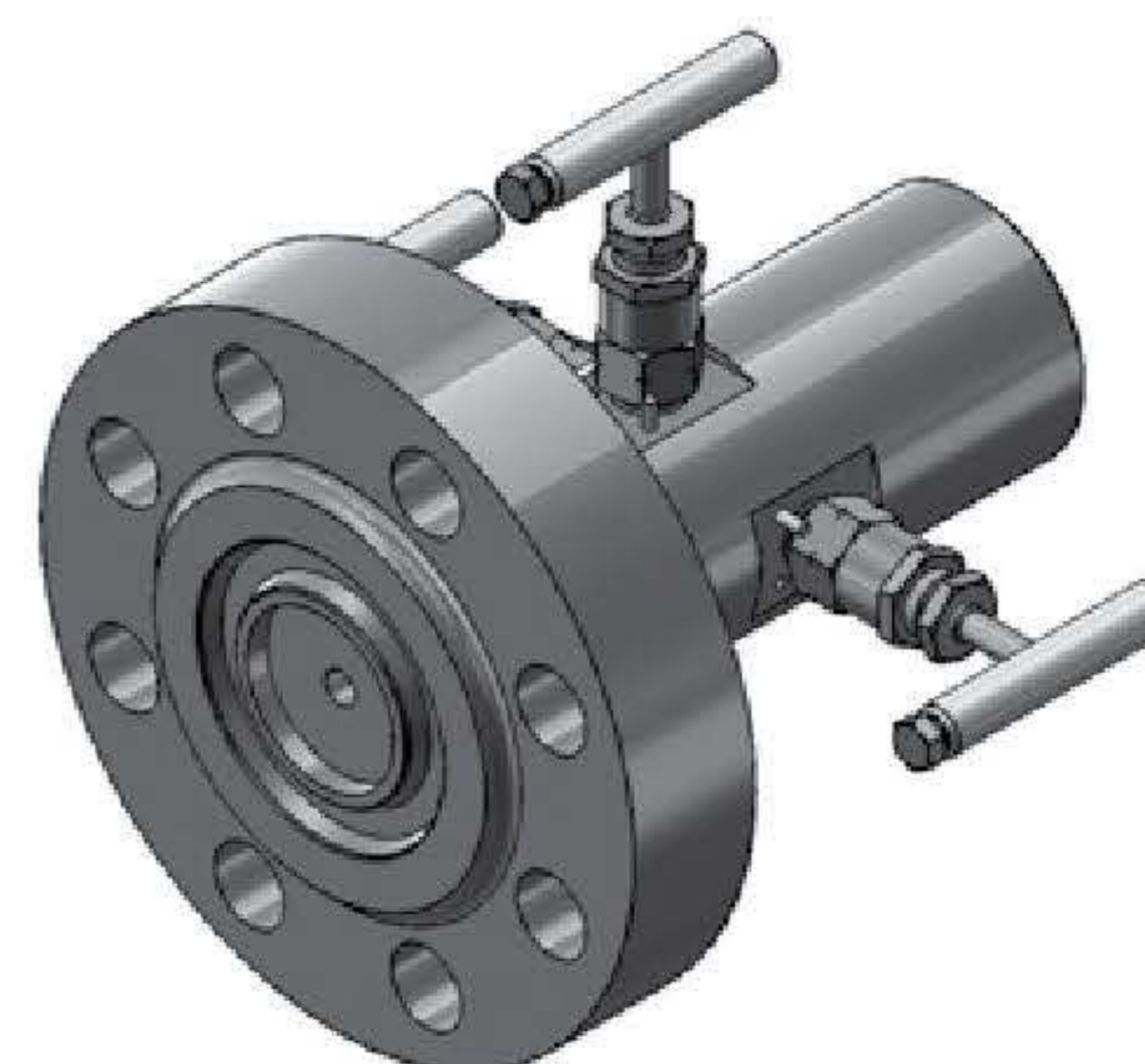
## API 6A Flanged Hexbloks - Ball and Needle

- Flange sizes of 1-13/16", 2-1/16", and 2-9/16"
- Flange types 2,000, 3,000, 5,000, and 10,000 API.
- API 607 6th addition fire safe.
- Heavy duty hex valve non-rotating tip designed needle valve.
- 10mm and 15mm bore sizes are available.
- Single or double flange configurations are available.
- Large variety of materials are available (Stainless Steel, Duplex, Super-Duplex, Inconel, etc.)

### HK32

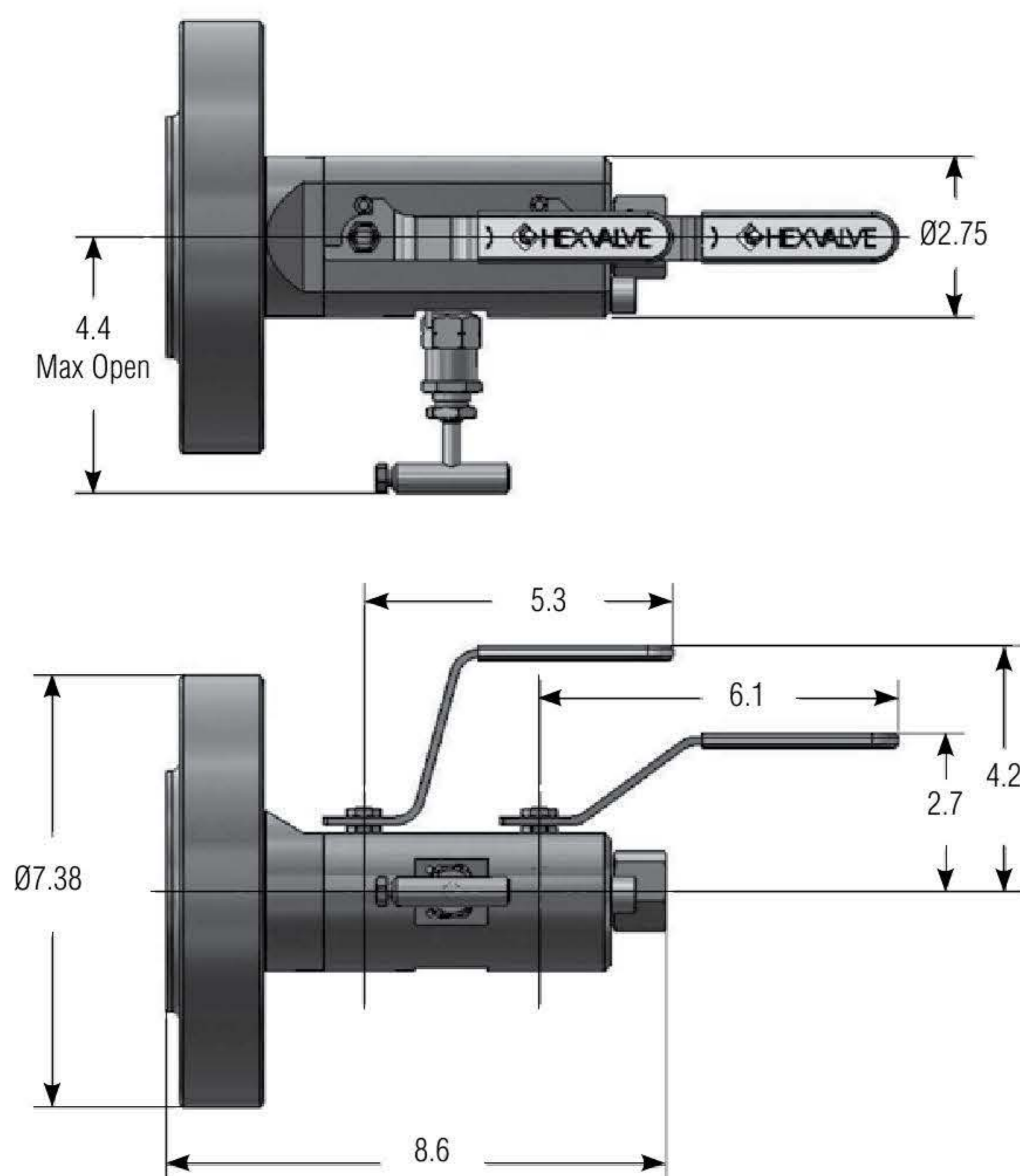


### HK30

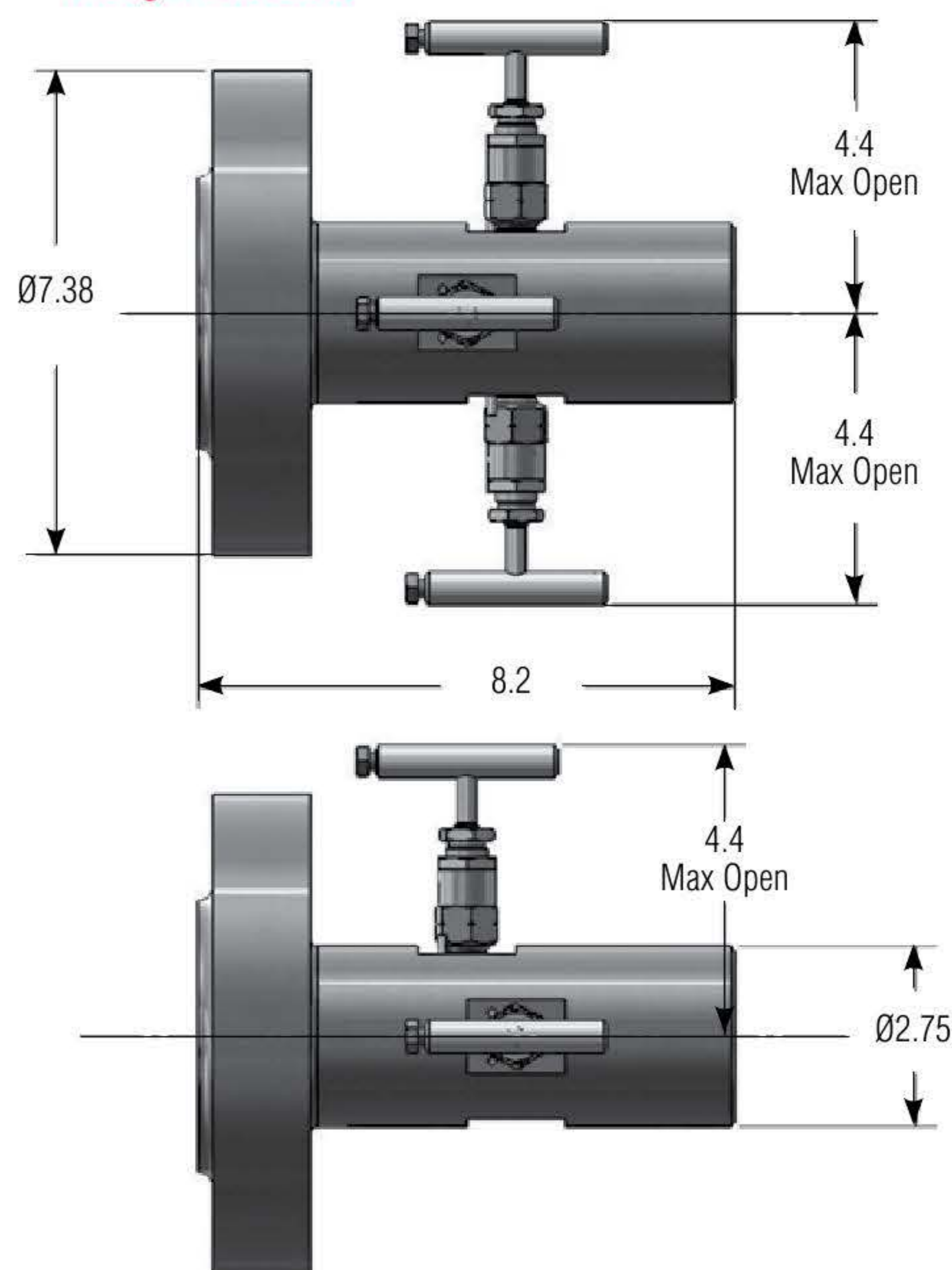


## Dimensions (API 1-13/16" 10,000 PSI Flange x 1/2" FNPT Shown)

**HK32**  
 Weight = 28lbs



**HK30**  
 Weight = 30lbs





MODEL	BODY CONFIG.	BODY MAT'L	INLET SIZE	INLET TYPE	OUTLET SIZE	OUTLET TYPE	BALL & STEM/TIP	BALL SEAT MAT'L	PACKING	OPTION	OPTION
HK22	0	U	N	A	D	S	4	3	2	M	D

MODEL	TYPE
HK10	Single Block Screwed Bonnet
HK12	Single Block Ball
HK20	Single Block & Bleed Screwed Bonnet
HK22	Single Block Ball & Bleed (vent)
HK30	* Double Block & Bleed Screwed Bonnet
HK32	* Double Block Ball & Bleed (vent)
HK42	** Double Block Ball & Bleed (vent)

\* Block > Bleed > Block configuration

\*\* Block > Block > Bleed configuration

BODY CONFIGURATION	
A	10mm 2,000 PSI Soft Seat Primary & Secondary Block Valves, with Hard Seat Vent Valve
B	10mm 3,000 PSI Soft Seat Primary & Secondary Block Valves, with Hard Seat Vent Valve
C	10mm 5,000 PSI Soft Seat Primary & Secondary Block Valves, with Hard Seat Vent Valve
0	10mm 10,000 PSI Soft Seat Primary & Secondary Block Valves, with Hard Seat Vent Valve

BODY MATERIAL	
U	316SS (forged)
D	316SS NACE (forged)
Y	A182F 316L (forged)
3	A182F 316L NACE (forged)
P	Carbon Steel A105
N	Carbon Steel, A105 NACE
6	Duplex A182 F51 (forged)
4	Super Duplex A182 F55 (forged)
H	Hastelloy C
X	Alloy 20
K	Low Temp CS A350 LF2 (forged)
7	Inconel 625
I	Incoloy 825
M	Monel 400 (forged)

INLET SIZE	
C	5/16"
3	1/2"
D	9/16"
4	3/4"
N	1-13/16"
O	2-1/16"
P	2-9/16"

INLET TYPE	
A	API 6A - BX Ring Groove
S	Medium Pressure Cone & Thread Fitting
T	High Pressure Cone & Thread Fitting
1	MNPT
3	FNPT
4	FSW

OUTLET SIZE	
C	5/16"
3	1/2"
D	9/16"
4	3/4"
N	1-13/16"
O	2-1/16"
P	2-9/16"

OUTLET TYPE	
A	API 6A - BX Ring Groove
S	Medium Pressure Cone & Thread Fitting
T	High Pressure Cone & Thread Fitting
1	MNPT
3	FNPT
4	FSW

BALL & STEM / NRT (VENT VALVE)	
4	316/316 Stem w/ NRT tip
3	316/316 NACE Stem w/ NRT tip
5	316/Stellite Stem w/ NRT tip
K	316/Monel Stem w/ NRT tip
Y	316L/316L Stem w/ NRT tip
A	316L/316L NACE Stem w/ NRT tip
M	Duplex/Duplex Stem w/ NRT tip
C	Super Duplex/Super Duplex Stem w/ NRT tip
D	Hastelloy C/Hastelloy C Stem w/ NRT tip
G	Alloy 20/Alloy 20 Stem w/ NRT tip
6	I-625/I-625 Stem w/ NRT tip
7	I-825/I-825 Stem w/ NRT tip
B	Monel/Monel Stem w/ NRT tip

Note: For different NRT tip material, contact factory

BALL SEAT MATERIAL	
3	PEEK (standard)
4	C-PEEK (req'd for 10,000 PSI)

Contact factory for other seat materials

PACKING	
2	Teflon Packing
3	Graphite Packing (fire safe selection)

OPTION*	
M	Two Outlets
N	Three Outlets
6	100% 316 non-wet parts
S	Swivel Adapter**
C	Plugged vent option (same material as body)
V	OS&Y Bonnet - Vent Valve
D	1/4" Vent Port
9	Tamper Proof/Lockout Handle - Vent Valve

\*Note: Choose any two options in alpha-numerical order

\*\*Consult factory for swivel adapter ordering options