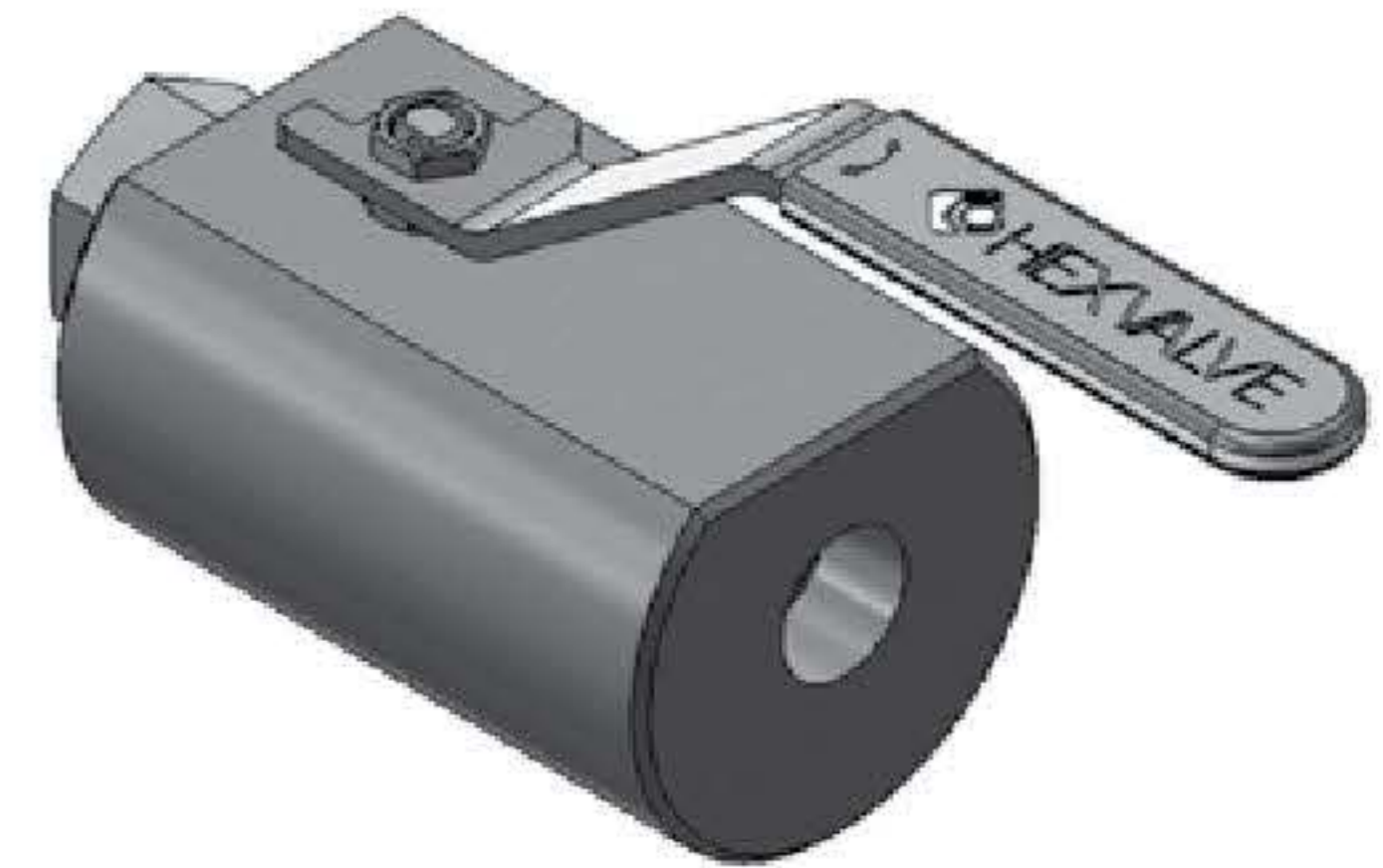


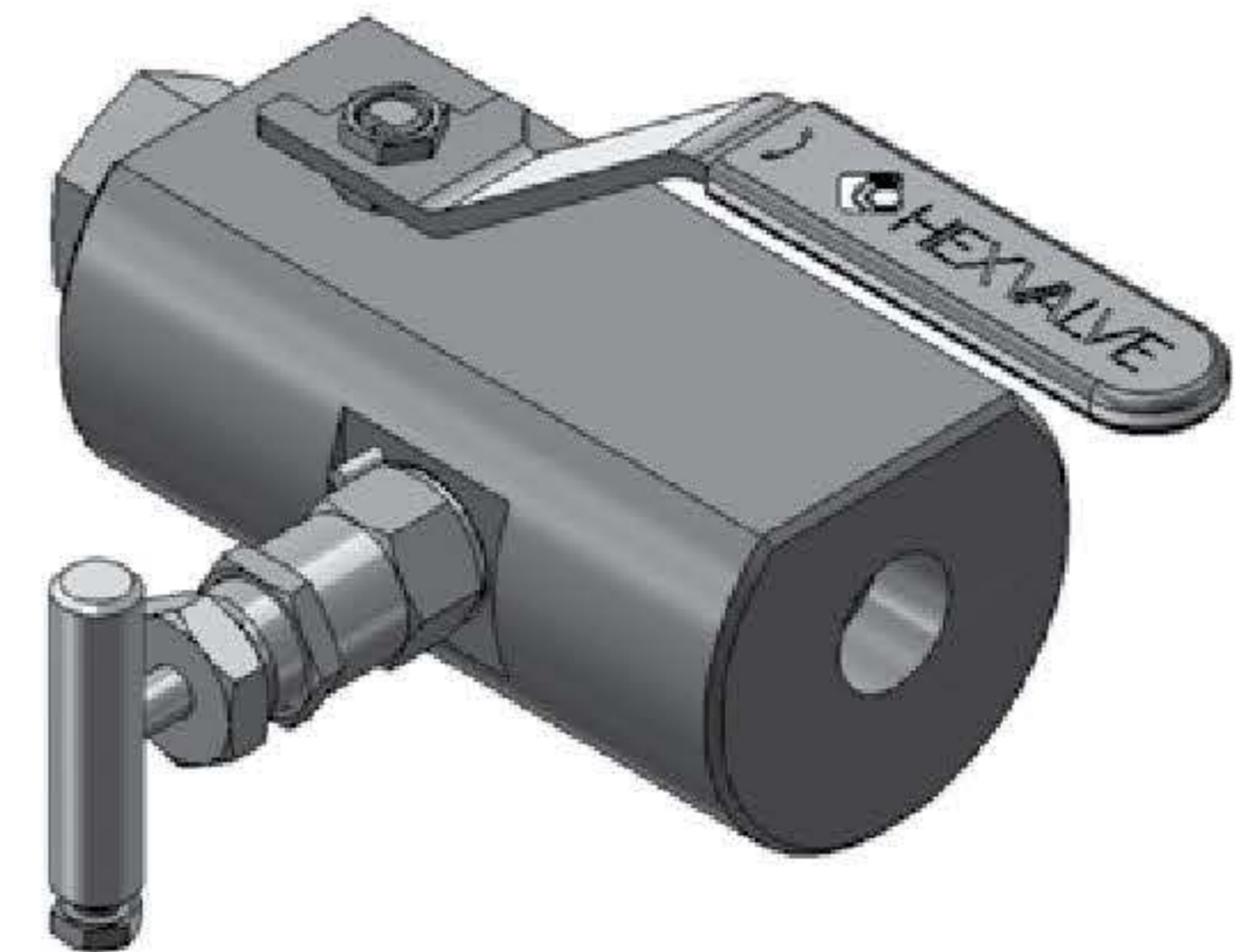
HK12 & HK22 NPT x NPT Hexblok - Ball Valve

- 1/4", 1/2", 9/16", 3/4", 1" sizes available.
For special size, please contact factory.
- Forged body design provides strength needed to handle the higher pressures while keeping the overall dimensions small.
- Block and bleed version eliminates weight, space, and cost.
- Less labor cost for installation of one valve instead of two.
- Pressure ranges of 6,000 psi and 10,000 psi.

HK12

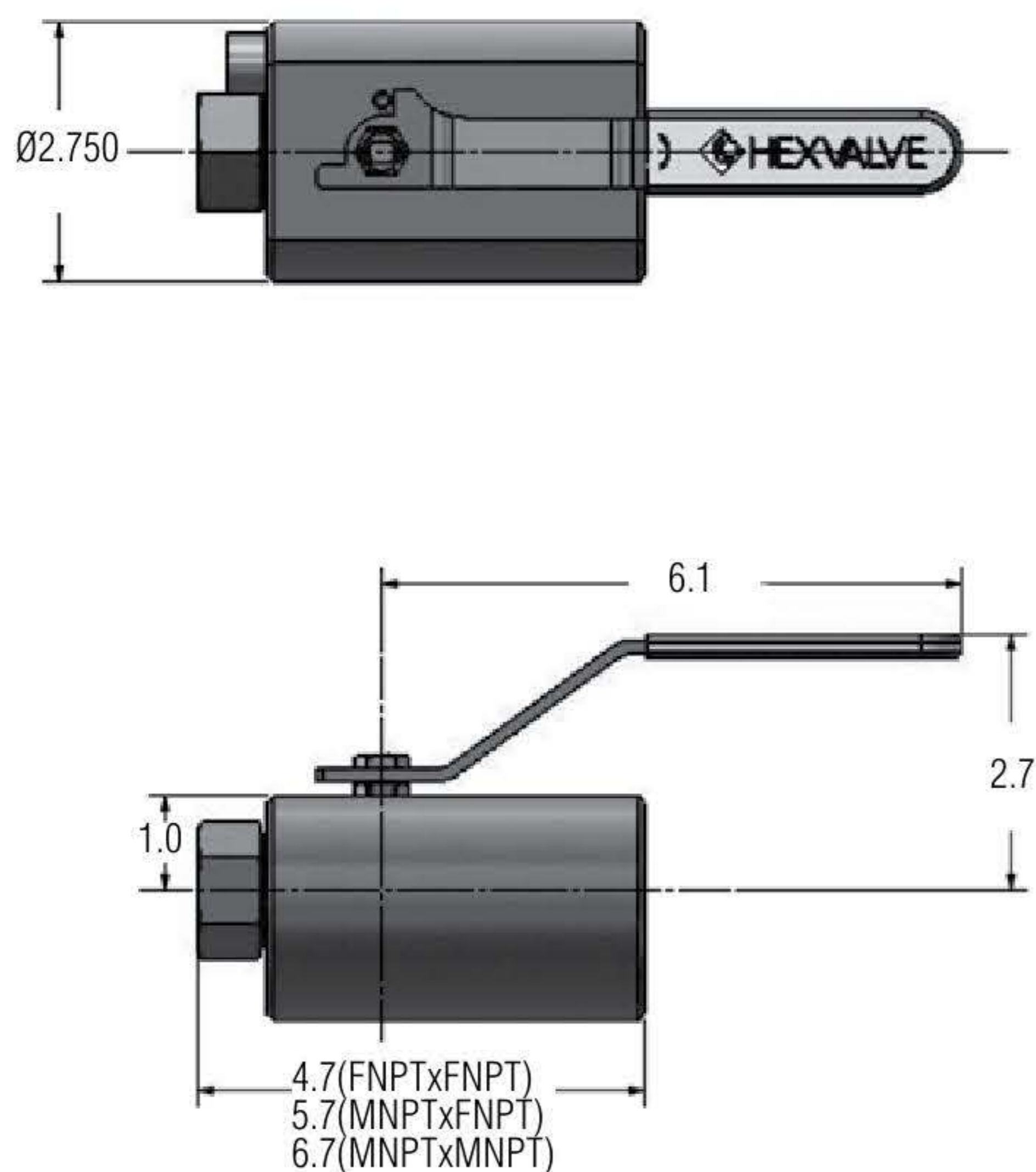


HK22

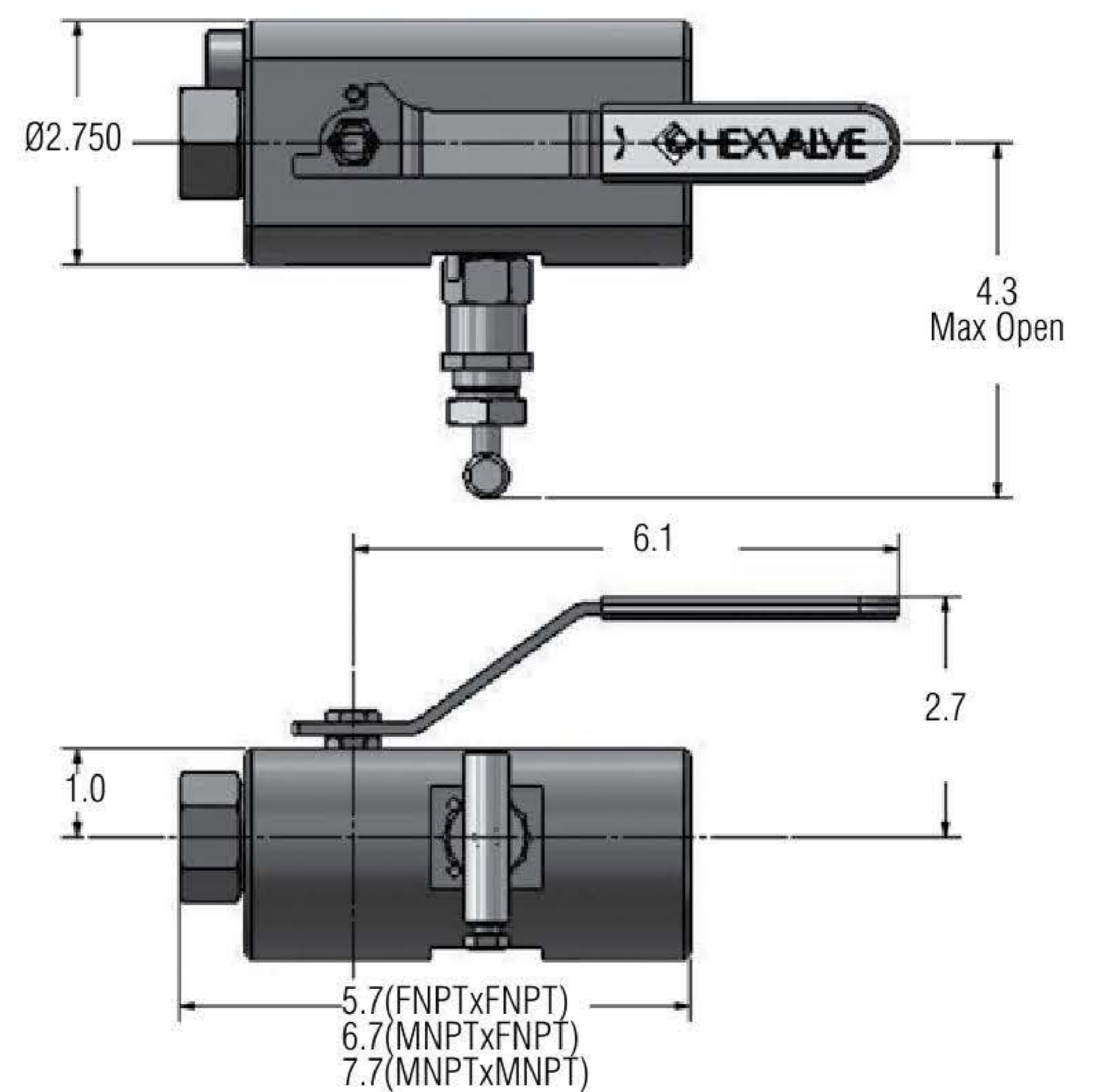


Dimensions

HK12
Weight = 7 lbs



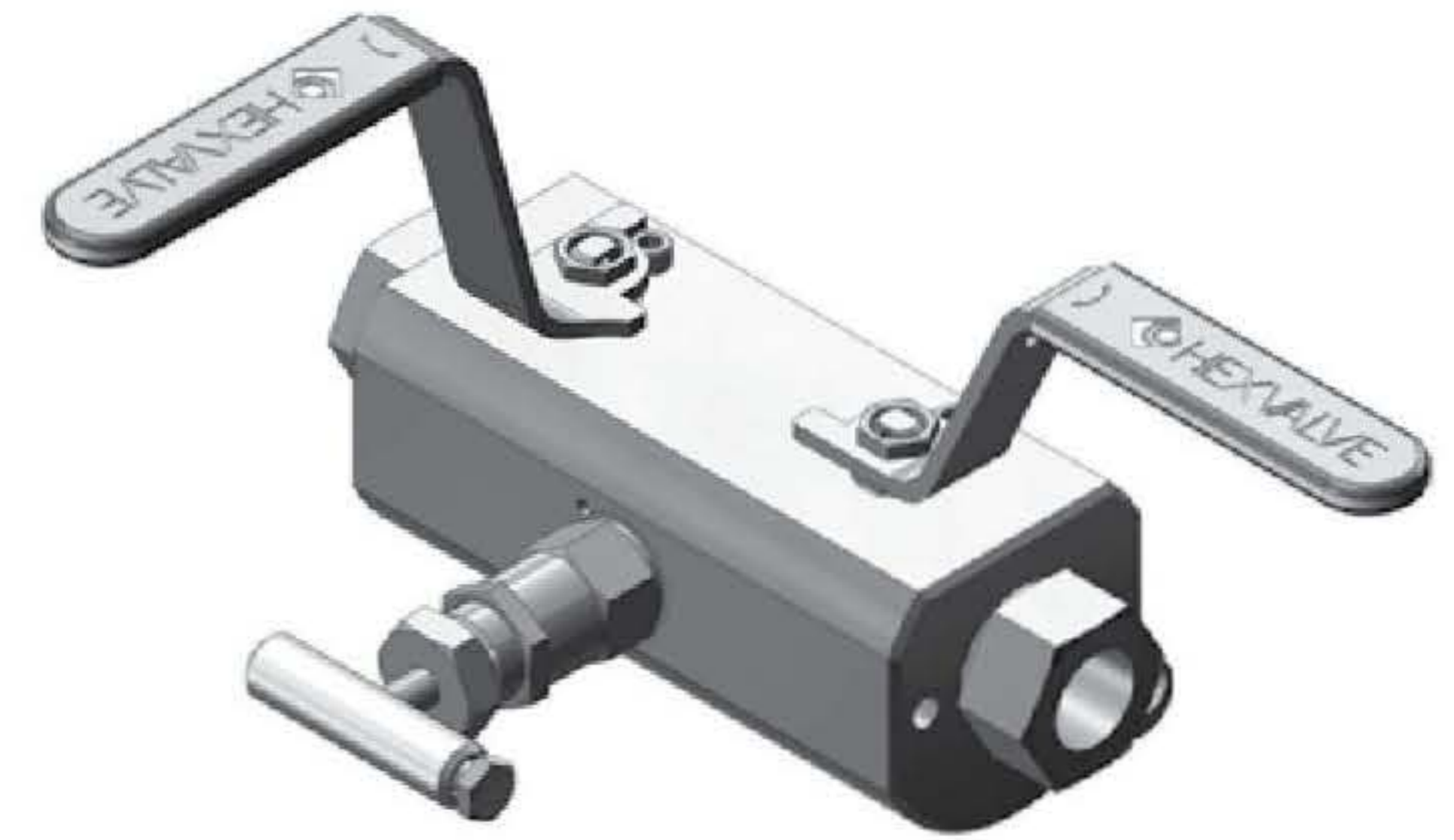
HK22
Weight = 9 lbs



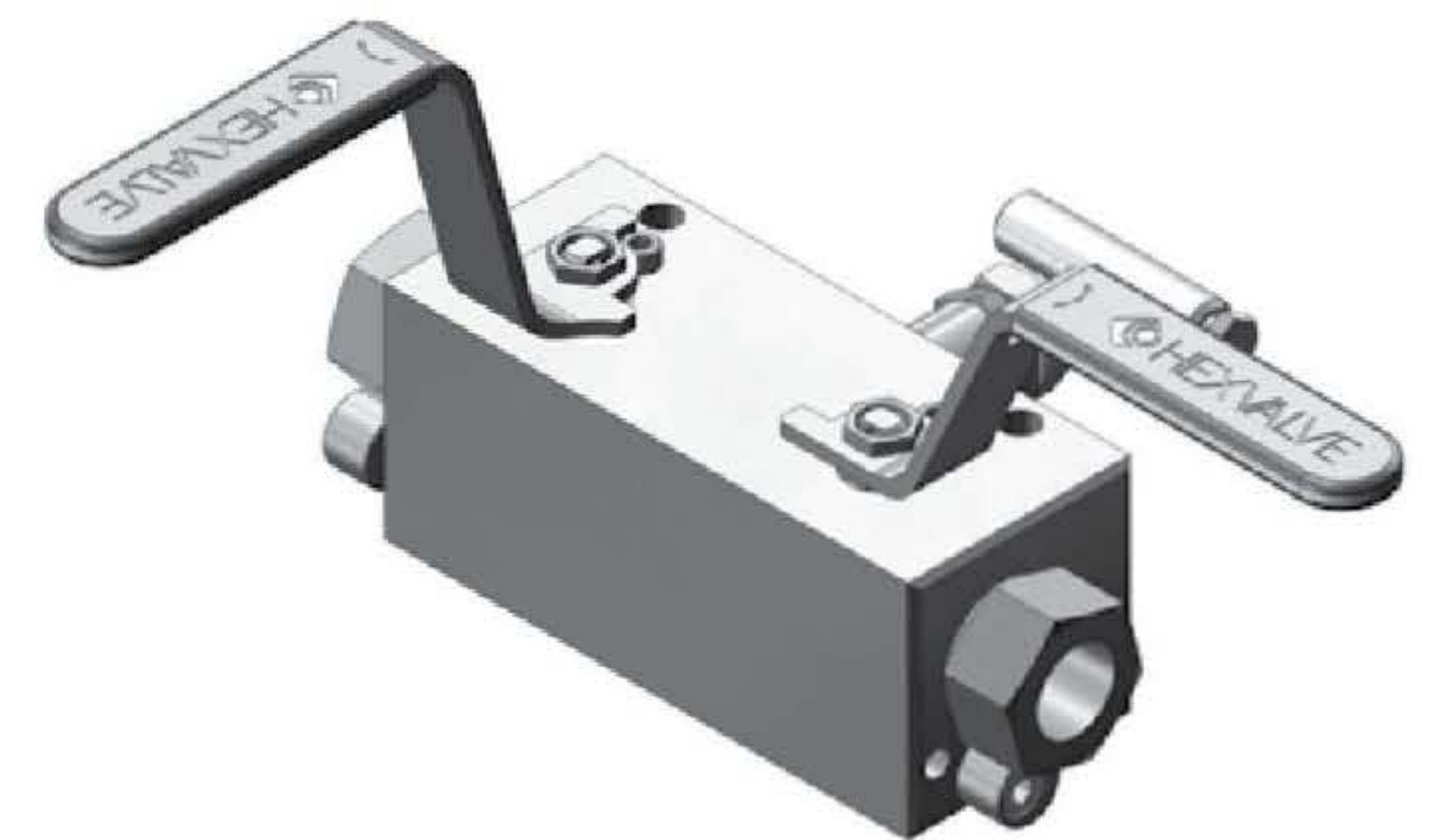
HK32 NPT x NPT Hexblok - Ball Valve

- 1/4", 1/2", 9/16", 3/4", 1" sizes available.
- The Hexblok Double Block and Bleed valve incorporates three valves into one, bringing the overall dimensional size down to a convenient compact package.
- Pressure ranges of 6,000 psi and 10,000 psi.
- Less leak points, less weight and small size make this the valve of choice on instrument pressuer points.

Standard Body

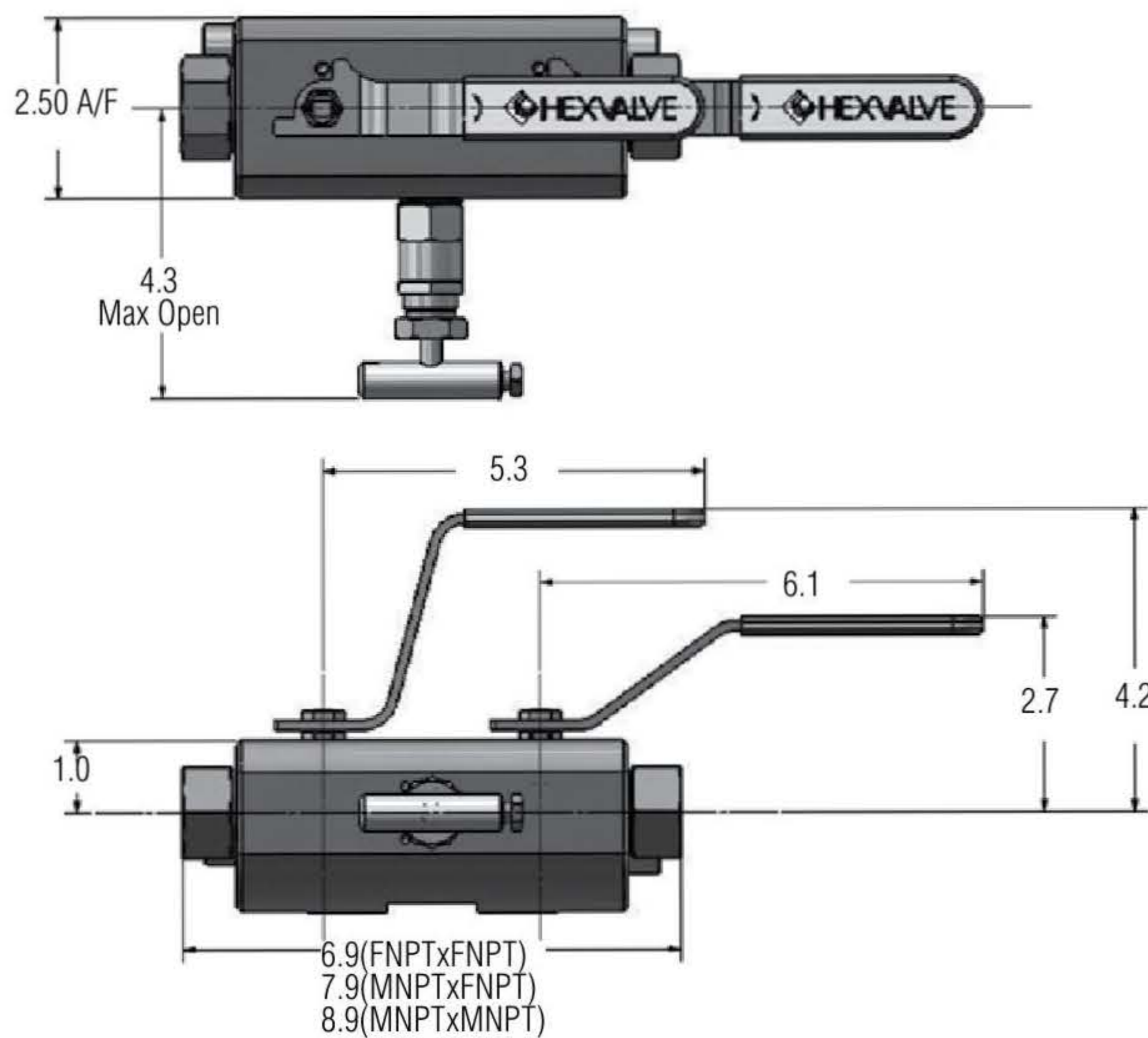


Square Body with Mounting Holes

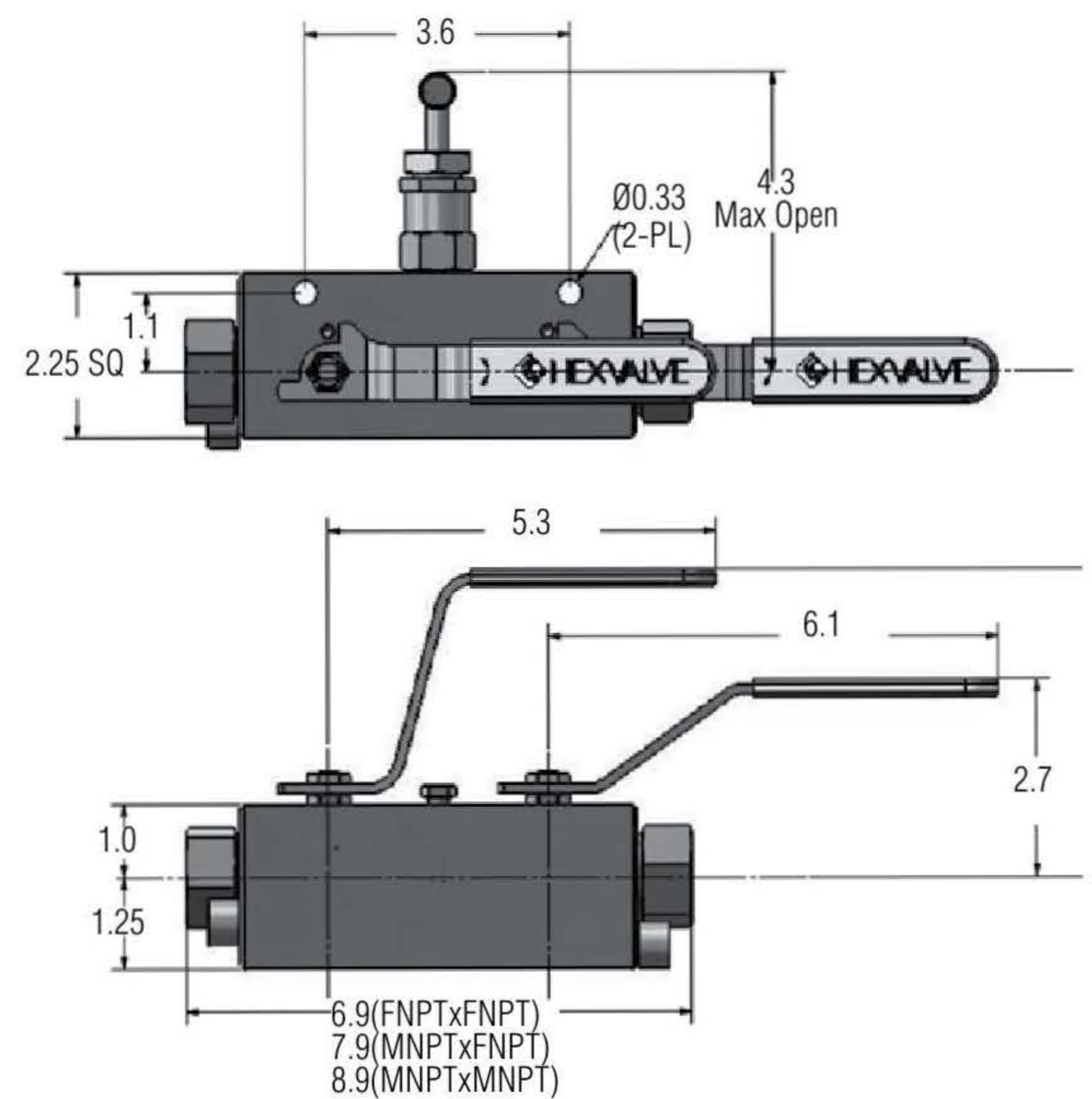


Dimensions (1/2" & 3/4" NPT shown)

HK32 Standard
Weight = 9.5 lbs

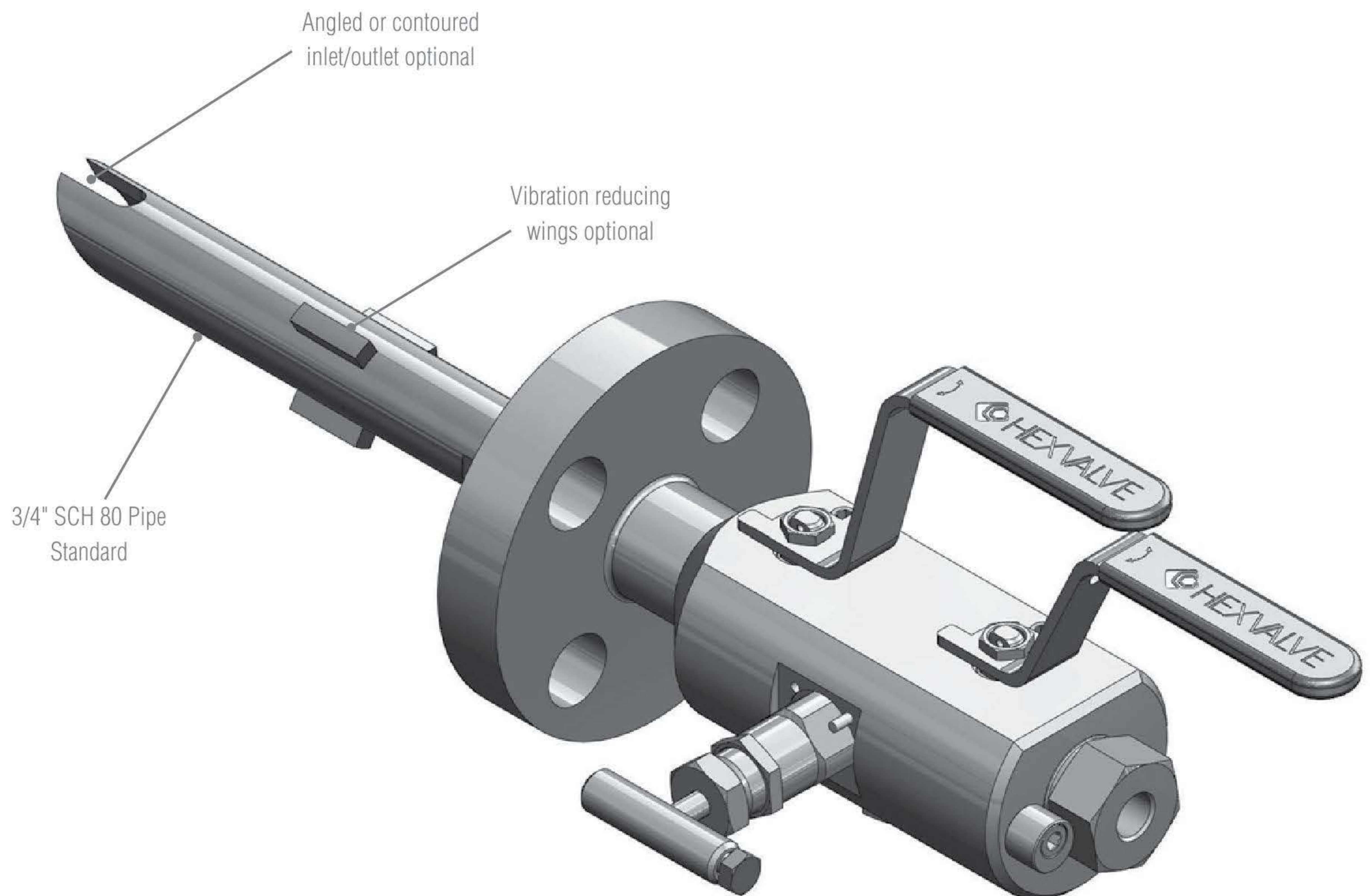
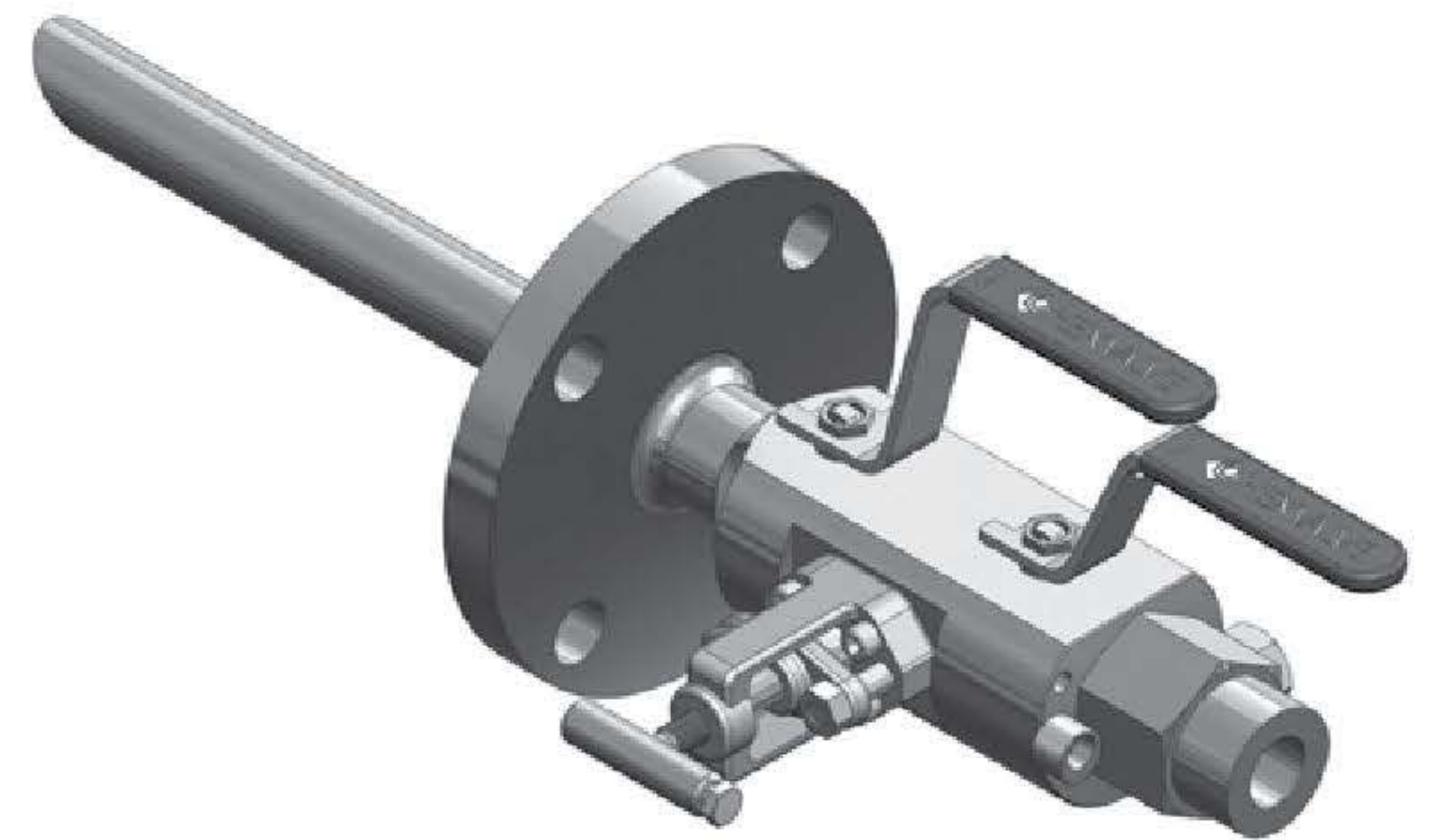


HK32 Square Body
Weight = 9 lbs



Sample Quills & Injection Probes

- The Sampling Probe or Injection Quill Double Block and Bleed valves are designed for safety in these hazardous applications.
- Integral check valve available.
- Custom designs and lengths available per customer application.
- NACE valves available.
- Many materials of construction are available (Stainless Steel, Duplex, Super-Duplex, etc.)

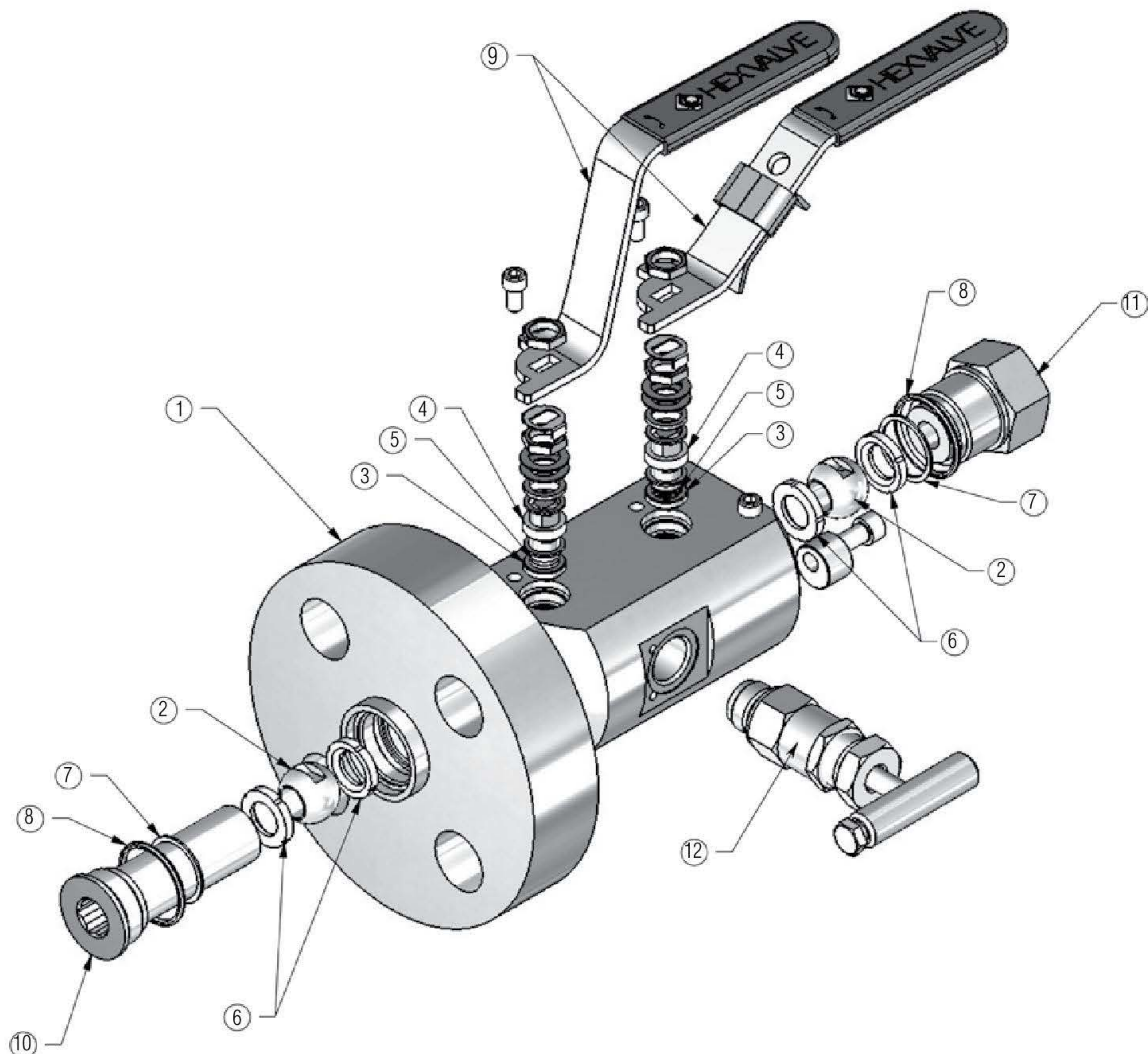


Materials of Construction - Hexblok Ball Valve

Item	Description	Material Code 'U'/'D'	Material Code 'Y'/'3'	Material Code 'P'/'N'	Exotic (Note 2)
1	Body	316SS / 316 SS Nace	316L SS / 316L SS Nace	A105 / A105 Nace (Note 1)	Exotic
2	Ball	316SS / 316 SS Nace	316L SS / 316L SS Nace	316 SS/316 SS NACE	Exotic
3	Ball Stem	316SS / 316 SS Nace	316L SS / 316L SS Nace	316 SS/316 SS NACE	Exotic
4	Ball Stem Packing	PTFE or Graphite	PTFE or Graphite	PTFE or Graphite	PTFE or Graphite
5	Ball Stem O-ring	Viton	Viton	Viton	Viton
6	Seats	PEEK or Carbon PEEK	PEEK or Carbon PEEK	PEEK or Carbon PEEK	PEEK or Carbon PEEK
7	Gasket-Metal	316 SS / 316 SS Nace	316L SS / 316L SS Nace	316 SS/316 SS NACE	Exotic
8	Gasket-Soft	PEEK or Carbon PEEK	PEEK or Carbon PEEK	PEEK or Carbon PEEK	PEEK or Carbon PEEK
9	Handle	304SS	304 SS	304 SS	304 SS
10	Inlet Retainer	316 SS / 316 SS Nace	316L SS / 316L SS Nace	A105 / A105 Nace (Note 1)	Exotic
11	Outlet Retainer	316 SS / 316 SS Nace	316L SS / 316L SS Nace	A105 / A105 Nace (Note 1)	Exotic
12	Bleed Bonnet	316 SS / 316 SS Nace	316L SS / 316L SS Nace	316 SS/316 SS NACE	Exotic

Notes:

- 1 - Carbon steel valve bodies and components are zinc plated
- 2 - See product designator (next page) for full list of materials





MODEL	BODY CONFIG.	BODY MAT'L	INLET SIZE	INLET TYPE	OUTLET SIZE	OUTLET TYPE	BALL & STEM/TIP	BALL SEAT MAT'L	PACKING	OPTION	OPTION
HK22	2	6	3	C	3	1	4	2	3	A	9

MODEL	TYPE
HK12	Single Block Ball
HK22	Single Block Ball & Bleed (vent)
HK32	*Double Block Ball & Bleed (vent)
HK42	**Double Block Ball & Bleed (vent)

*Block > Bleed > Block configuration

**Block > Block > Bleed configuration

BODY CONFIGURATION	
2	10mm Soft Seat Block Valve(s)
4	15mm Soft Seat Block Valve(s)
5	20mm Soft Seat Block Valve(s)
6	25mm Soft Seat Block Valve(s)
0	10mm 10,000 PSI Soft Seat Valve(s)

Vent valve always hard seat

BODY MATERIAL	
U	316SS
D	316SS NACE (forged)
Y	A182F 316L (forged)
3	A182F 316L NACE (forged)
P	Carbon Steel A105
N	Carbon Steel, A105 NACE
6	Duplex A182 F51 (forged)
4	Super Duplex A182 F55 (forged)
H	Hastelloy C
X	Alloy 20
K	Low Temp CS A350 LF2 (forged)
7	Inconel 625
I	Incoloy 825
M	Monel 400 (forged)

INLET SIZE	
1	1/4"
2	3/8"
3	1/2" (DN15)
4	3/4" (DN20)
5	1" (DN25)
6	1-1/2" (DN40)
7	2" (DN50)

INLET TYPE	
1	MNPT
3	FNPT
4	FSW
C	150# RF
D	300# RF
G	600# RF
H	900/1500# RF
K	2500# RF
L	150# RTJ
M	300# RTJ
N	600# RTJ
P	900/1500# RTJ
R	2500# RTJ

OUTLET SIZE	
1	1/4" (DN8)
2	3/8" (DN10)
3	1/2" (DN15)
4	3/4" (DN20)
5	1" (DN25)
6	1-1/2" (DN40)
7	2" (DN50)
9	Flanged - Same as inlet

OUTLET TYPE	
1	FNPT
7	MNPT
2	FSW
9	Flanged - Same as inlet

BALL & STEM / NRT (VENT VALVE)	
4	316/316 Stem w/ NRT tip
3	316/316 NACE Stem w/ NRT tip
5	316/Stellite Stem w/ NRT tip
K	316/Monel Stem w/ NRT tip
Y	316L/316L Stem w/ NRT tip
A	316L/316L NACE Stem w/ NRT tip
M	Duplex/Duplex Stem w/ NRT tip
C	Super Duplex/Super Duplex Stem w/ NRT tip
D	Hastelloy C/Hastelloy C Stem w/ NRT tip
G	Alloy 20/Alloy 20 Stem w/ NRT tip
6	I-625/I-625 Stem w/ NRT tip
7	I-825/I-825 Stem w/ NRT tip
B	Monel/Monel Stem w/ NRT tip

Note: For different NRT tip material, contact factory

BALL SEAT MATERIAL	
3	PEEK (standard)
4	C-PEEK

Contact factory for other seat materials

PACKING	
2	Teflon Packing
3	Graphite Packing (fire safe selection)

M	Two Outlets
N	Three Outlets
6	100% 316 non-wet parts
S	Swivel Adapter**
C	Plugged vent option (same material as body)
V	OS&Y Bonnet - Vent Valve
D	1/4" Vent Port
9	Tamper Proof/Lockout Handle - Vent Valve
K	10mm Vent Bore

*Note: Choose any two options in alpha-numerical order

**Consult factory for swivel adapter ordering options