

*The Hex HB52 Bleed Tee is ideal for modernizing outdated, non-bleed gauge installations. During instrument maintenance, simply thread the HB52 into the outlet of an existing block valve. An instrument is then threaded into the HB52 outlet to complete the installation. A second 1/2" side outlet accommodates a gauge or tube fitting for a remote auxiliary instrument. Bleed-off is simple — a turn of the handle directs flow through the discharge tube.*

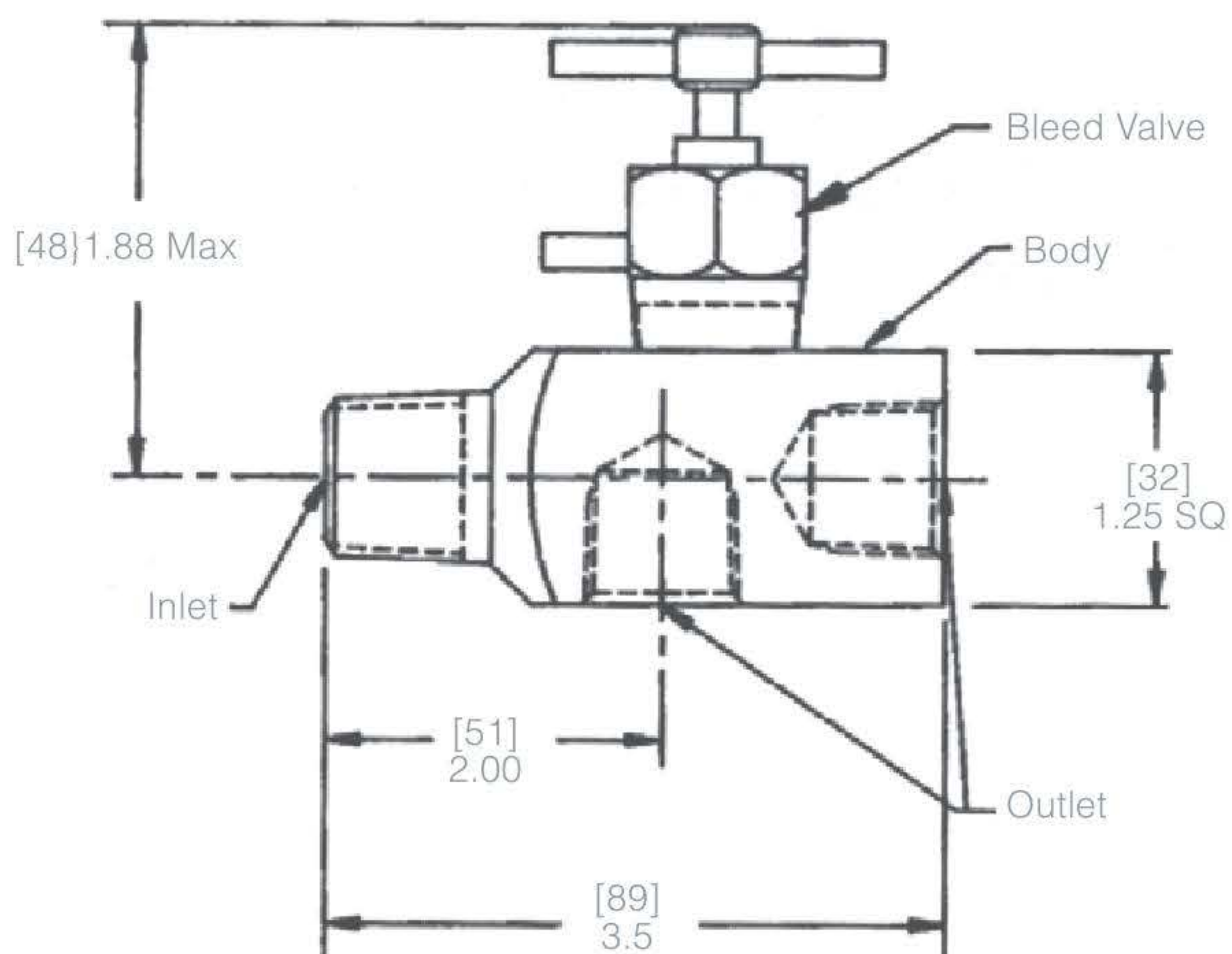
**Features and Benefits**

- Cost savings by reducing number of components and leak points.
- Compact design features two valves in one to utilize less space.

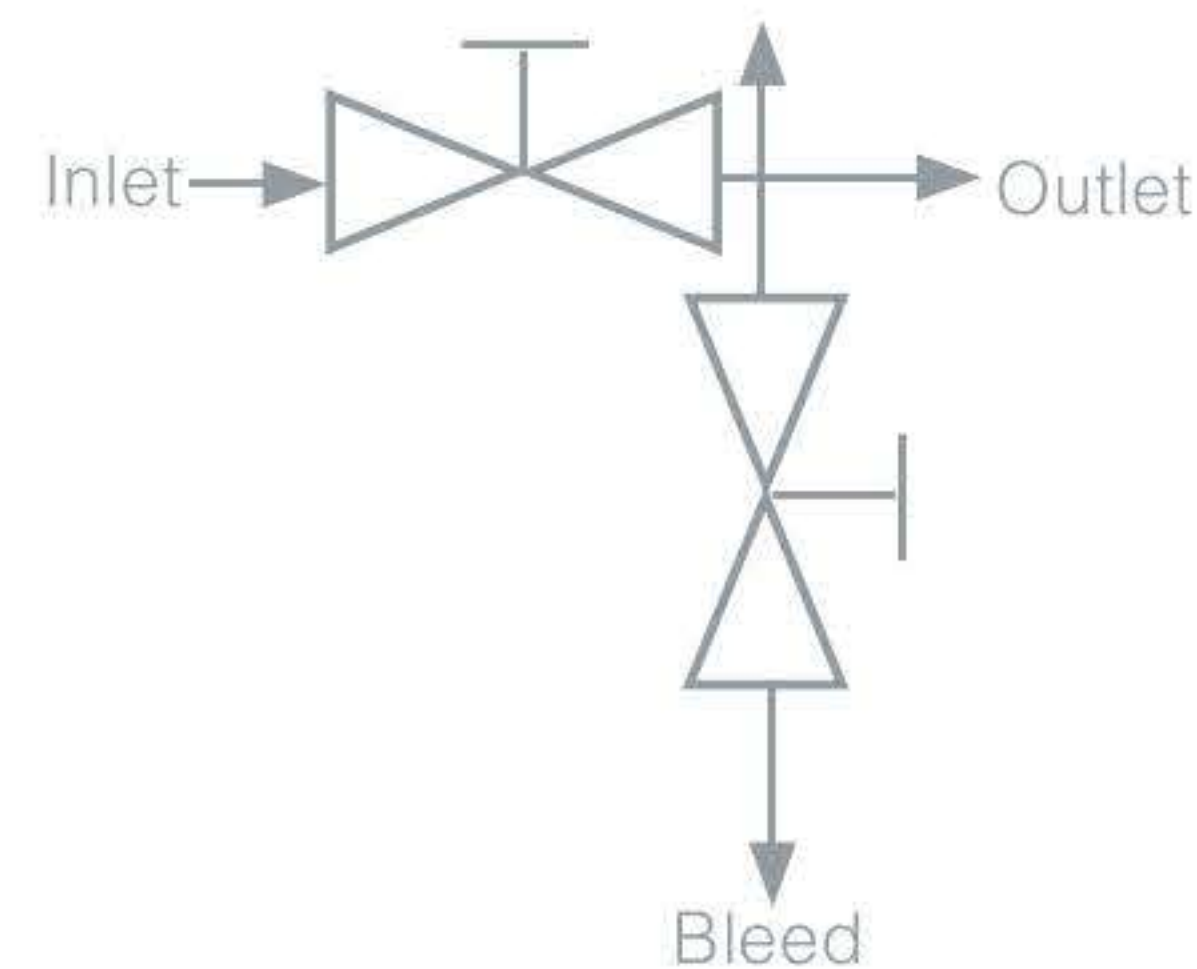


### Dimensions

Orifice Size: 0.315" with 0.127" bleed  
Weight: 1.5 pounds (0,68 kgs)



### Flow Schematic for HB52



How to Order							
Model Number	Seat Configuration	Body Material	Inlet Size	Inlet Type	Outlet Size	Bleed Stem	Bleed Seat
HB52	1 = Hard	S = Carbon Steel	3 = 1/2"	1 = MNPT	3 = 1/2"	2 = 316 SS Needle	1 = Integral
		U = Stainless Steel	4 = 3/4"	2 = MSW	1 = FNPT		
					R = Plug (1)		

### Sample Ordering Schematic

HB52	1	S	3	1	3	2	1
------	---	---	---	---	---	---	---