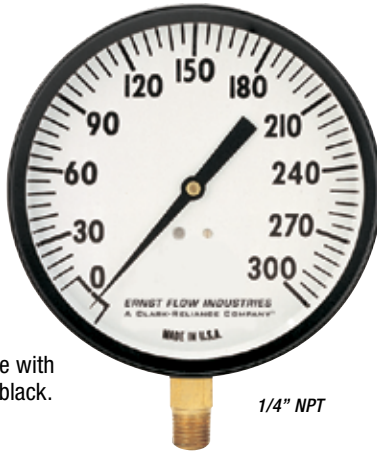


PRESSURE GAUGES (PRESSURE — VACUUM — COMPOUND)

UTILITY GAUGES: SERIES TL

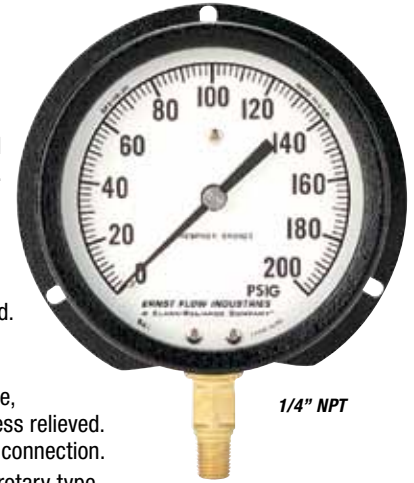
- **APPLICATION:** This gauge is intended for general service conditions. For pressure or vacuum service on air, oil, water, gas or other mediums that do not attack brass. For steam service, gauges should be protected from excessive temperature by installation of a syphon.
- **CASE AND RING:** Drawn steel case with friction fitted steel ring finished in black.
- **BOURDON TUBE ASSEMBLY:** Bronze, soldered to socket and tip.
- **DIAL:** White coated metal. Lithographed with black graduation lines and numerals, dial mounted on socket, independent of case.
- **SOCKET:** Brass bar stock 9/16" square wrench surface. 1/4" NPT Male lower or back connection.
- **ACCURACY:** 2% of the middle third of the entire range. ASME B40.1 Grade B.
- **MOVEMENT:** All brass construction, precision gear and pinion. Mounted on socket independent of case.
- **POINTER:** Balanced design, aluminum in black finish.



1/4" NPT

DELUXE GAUGES: SERIES PG

- **APPLICATION:** For Pressure measurement of all fluids and gases non-corrosive to brass. Steam service gauges should be protected from excessive temperature by installation of a syphon.
- **ACCURACY:** ±1% middle third. ASME B40.1 - Grade A
- **BOURDON TUBE & SOCKET:** Phosphor bronze bourdon tube, brass socket. Brazed and stress relieved. 1/4" NPT Male lower or back connection.
- **MOVEMENT:** Bronze bushed rotary type.
- **POINTER:** Slotted micro-adjustable.
- **DIAL:** Aluminum with white back ground and black graduation lines and numerals.
- **CASE:** Aluminum* with black textured enamel finish, black finished aluminum bayonet lock ring.



1/4" NPT

*3-1/2" dial size furnished with Stainless Steel case.

PRESSURE - PSI		
Range	Graduations	Figure Interval
0-15	0.5	1
0-30	0.5	5
0-60	1	5
0-100	2	10
0-160	5	20
0-200	5	20
0-300	5	30
0-400	10	50
0-600	10	50

COMPOUND - In. Hg. Vac./ PSI		
Range	Graduations	Figure Interval
30"-0-15	1"Hg-0.5 PSI	5"Hg-3 PSI
30"-0-30	1"Hg-1 PSI	10"Hg-5 PSI
30"-0-60	2"Hg-1 PSI	10"Hg-10 PSI
30"-0-100	5"Hg-2 PSI	15"Hg-10 PSI
30"-0-150	5"Hg-2 PSI	30"Hg-20 PSI

VACUUM - In. Hg. Vac.		
Range	Graduations	Figure Interval
30"-0	0.5" Hg	5" Hg

PRESSURE - PSI		
Range	Graduations	Figure Interval
0-15	0.25	1
0-30	0.50	5
0-60	1	10
0-100	1	10
0-160	2	20
0-200	2	20
0-300	5	50
0-400	5	50
0-600	10	100
0-1,000	10	100

COMPOUND - In. Hg. Vac./ PSI		
Range	Graduations	Figure Interval
30"-0-15	1"Hg-0.5 PSI	5"Hg-3 PSI
30"-0-30	1"Hg-1 PSI	10"Hg-5 PSI
30"-0-60	1"Hg-1 PSI	10"Hg-10 PSI
30"-0-100	5"Hg-1 PSI	15"Hg-10 PSI
30"-0-150	5"Hg-5 PSI	30"Hg-25 PSI
30"-0-200	5"Hg-5 PSI	30"Hg-20 PSI
30"-0-300	5"Hg-5 PSI	30"Hg-50 PSI
30"-0-400	5"Hg-5 PSI	30"Hg-50 PSI
30"-0-600	5"Hg-10 PSI	30"Hg-100 PSI

VACUUM - In. Hg. Vac.		
Range	Graduations	Figure Interval
30"- 0	0.5" Hg	5" Hg

WHEN ORDERING: SPECIFY MODEL AND DIAL SIZE			
Dial Sizes	Pressure Model EFI	Vacuum Model EFI	Compound Model EFI
2"	TL20P	TL20V	TL20VP
2-1/2"	TL25P	TL25V	TL25VP
3-1/2"	TL35P	TL35V	TL35VP
4-1/2"	TL45P	TL45V	TL45VP

Note: 4-1/2" Dial Size available in lower connection only

WHEN ORDERING: SPECIFY MODEL AND DIAL SIZE			
Dial Sizes	Pressure Model EFI	Vacuum Model EFI	Compound Model EFI
3-1/2"	PR 3-1/2	VR 3-1/2	CR 3-1/2
4-1/2"	PR 4-1/2	VR 4-1/2	CR 4-1/2
6"	PR 6	VR 6	CR 6
8-1/2"	PR 8-1/2	VR 8-1/2	CR 8-1/2

STEAM GAUGE SYPHONS

CAN BE USED WITH ALL PRESSURE GAUGES

- Brass - 1/4", 1/2" NPT
- Steel - 1/4", 1/2" NPT
- Stainless Steel - 1/4", 1/2" NPT
- Schedule 40 standard (Schedule 80 available)



STRAIGHT TYPE



ANGLE TYPE