

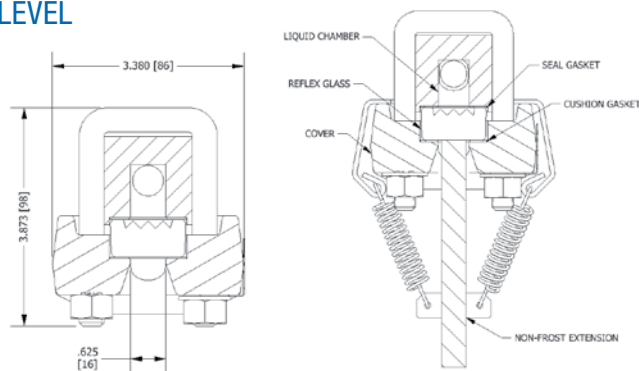
REFLEX FLAT GLASS GAUGES

1/2" NPT Both Ends (3/4" optional)

FOR STEAM** OR LIQUID LEVEL

MODEL EFI S

- *For Liquid Level Pressures up to: 2250 to 3270 PSI @ 100°F
1550 to 2285 PSI @ 600°F
- Saturated steam rating 300 WSP
- Chamber: Steel
- Cover: Forged Steel
- Fasteners: Alloy Steel



Frost-Proof Kits can be furnished for all Liquid Level Gauges...consult Ernst Flow Industries

*NOTES FOR PAGES 18 & 19: General Operating Pressures are stated. They represent pressures from the longest through the shortest single section gauge. Consult with Ernst Flow Industries for the specific operating pressure for an individual gauge size.

All materials conform to ASME or ASTM specifications.

Gauge support brackets are furnished for all four section gauges and longer to support the weight of the gauge assembly.

OPTIONAL STAINLESS STEEL CHAMBERS ARE AVAILABLE

NOTE: "Valve Center Chart" for Reflex or Clear Insert Gauges is located on page 49.

Section X Size	A Length of Gauge	B Length of Visual Glass	GAUGE MODEL	Approx Weight (lbs.)
SINGLE SECTION GAUGE INSERT				
11	5-1/4"	3-3/4"	EFI S-1100J	9
12	6-1/4"	4-3/4"	EFI S-1101J	10
13	7-1/4"	5-3/4"	EFI S-1102J	12
14	8-1/4"	6-3/4"	EFI S-1103J	13
14	9-3/8"	7-7/8"	EFI S-1104J	15
16	10-5/8"	9-1/8"	EFI S-1105J	17
17	11-3/4"	10-1/4"	EFI S-1106J	19
18	13-3/8"	11-7/8"	EFI S-1107J	21
19	14-1/8"	12-5/8"	EFI S-1108J	22
TWO SECTION GAUGE INSERT				
24	16-1/2"	15"	EFI S-1123J	27
25	18-3/4"	17-1/4"	EFI S-1124J	29
26	21-1/4"	19-3/4"	EFI S-1125J	34
27	23-1/2"	22"	EFI S-1126J	37
28	26-3/4"	25-1/4"	EFI S-1127J	42
29	28-1/4"	26-3/4"	EFI S-1128J	44
THREE SECTION GAUGE INSERT				
36	31-7/8"	30-3/8"	EFI S-1145J	50
37	35-1/4"	33-3/4"	EFI S-1146J	56
38	40-1/8"	38-5/8"	EFI S-1147J	63
39	42-3/8"	40-7/8"	EFI S-1148J	66
FOUR SECTION GAUGE INSERT				
47	47"	45-1/2"	EFI S-1166J	74
48	53-1/2"	52"	EFI S-1167J	84
49	56-1/2"	55"	EFI S-1168J	88
FIVE SECTION GAUGE INSERT				
57	58-3/4"	57-1/4"	EFI S-56J	93
58	66-7/8"	65-3/8"	EFI S-57J	105
59	70-5/8"	69-1/8"	EFI S-58J	111

VISIBLE LENGTHS UP TO 125-5/8" ARE AVAILABLE...consult with Ernst Flow Industries
Steel valves for use with Reflex Flat Gauges are illustrated on page 17.
Replacement Glass and Gaskets are illustrated on page 13.

**WARNING: Specify if insert gauge is to be used for steam service.

For use with PROCESS SATURATED STEAM APPLICATIONS ONLY.

EFI Reflex Flat Insert Glass Gauges ARE NOT TO BE USED WITH SUPERHEATED STEAM.



Empty Space or Steam shows WHITE

Liquid or Water shows BLACK